

# ROXBORO RAMBLER

Miss Emma Bailey Jones, Editor.

Miss Marie Deering, Asst. Editor

PUBLISHED BY ROXBORO HIGH SCHOOL

## Class Officers Are Elected At High School

Roxboro high school class officers for Freshmen, Sophomores and Seniors were chosen at class meetings held last week.

The senior class met on September 24, for the purpose of electing officers for the coming year. The elimination of the many candidates for president took quite a little time, and many votes had to be cast before a majority was received by one man, Hassell Whitfield. The other offices are to be filled by Billy Newell, vice president; Annie Wray Perkins, secretary; Arline Newell, treasurer, and Ethel N. Winstead and Robert Hunt, cheerleaders.

Sophomore officers are Martin Michie, Jr., president; Jack Hughes, Jr., vice president; Marion Long, secretary; Nancy Masten, treasurer and Kathryn Tapp and Billy Spencer, cheerleaders.

Monday morning, September 23, the eighth grade met in the gymnasium to vote for cheerleaders. The girls chose Alice Humphries, while Basil Averette received the majority of the boys' votes.

At a meeting held Tuesday afternoon in the library the remaining class officers were selected as follows: president, Bruce Newell; vice president, Pete Pridgon; secretary, Jackie Gordon, and treasurer, Glenn Overton.

## 4-H CLUB ORGANIZES

Roxboro High school 4-H club met for reorganization on Thursday. New officers were elected as follows: president, Thomas Pleasant; vice president, Garland Blanks; secretary and treasurer, Harriet Yarborough. The girls met separately. Boys also met separately to consider entries in the County Fair.

Four-H girls were informed that their major projects for this year will be "Home Beautification" with special emphasis on the care of the grounds.

SELL YOUR TOBACCO IN ROXBORO.

## Gossip Column

By Anita Kirby

It looks as if the girls always like new boys, or is it just his tech—Fess up, Buddy.

What is it that Anna Katherine has that Annie Laurie hasn't?

We wonder why Betty always seems to look toward town when she gets that dreamy look in her eyes?

Buddy Thomas seems to be the topic of conversation for the girls in the tenth grade. Especially one.

What is all the attraction in the eighth grade, Walter?

Why is Anne Marie Umstead taking so many unnecessary subjects?

Love seems to be the theme here at Roxboro High this year.

It seems as if our star football player from Durham is giving "woo" Dogpatch Style lessons to quite a few tenth grade girls.

Mary Louise's old flame seems to be still burning.

Why does Henry Newell go to the post office so often? Does mail still come from Alabama?

Why does Margie Monk want to join the football squad so bad? Is it Gus or Lindsay? Your guess is as good as mine.

Who does Lawrence "Munch" Featherston walk down the lane with every day at lunch? It certainly isn't George Long.

We wonder why Eleanor Winstead and Arline Newell like to ride in the Kirby Bros. sawdust truck.

Do you know Miss Melton's slogan? "Watch the Fords go by"—Green Fords, to be specific—green Fords with white tires, to be still more specific.

SELL YOUR TOBACCO IN ROXBORO.

## GIRLS HI-Y MEETING HELD LAST WEEK

First meeting of the Roxboro Senior girls' Hi-Y was held at the home of Miss Arline Newell, the president of the club, last week. This meeting was devoted chiefly to business, but a short devotional was given by Miss Mary Lou Dixon and Miss Anita Kirby. A project for the coming year was discussed, but before deciding definitely, a committee was appointed to talk with Mrs. T. C. Wagstaff. It was also decided that the Hi-Y girls would attend church in a body once a month. They will attend the Episcopal church on September 29. After all the business had been dispensed with the Hi-Y song was sung and the meeting was closed with the Hi-Y benediction. Delicious refreshments were served by the hostess.

## SOPHOMORE DANCE ENJOYABLE AFFAIR

The Sophomore Class of Roxboro High school sponsored a dance which was held in the high school gymnasium Friday night, September 20. Present were about fifty Sophomore students and their guests, who enjoyed the affair very much.

The chaperones for this occasion were Mr. and Mrs. Tilley and Mr. and Mrs. Rynd.

## FIRE DRILL AT SCHOOL

At 10:16 on Thursday morning, September 26, all classes at Roxboro high school were interrupted by a fire drill. It took exactly two minutes to clear the whole building and everybody had resumed studies in four minutes. This drill was in keeping with National Fire Prevention Week which will be observed next month.

## 'Private Affairs' Draws Laughter

Universal's modern romantic comedy, "Private Affairs," starring Nancy Kelly, Robert Cummings, Hugh Herbert and Roland Young, is to play at the Dolly Madison theater, Monday and Tuesday.

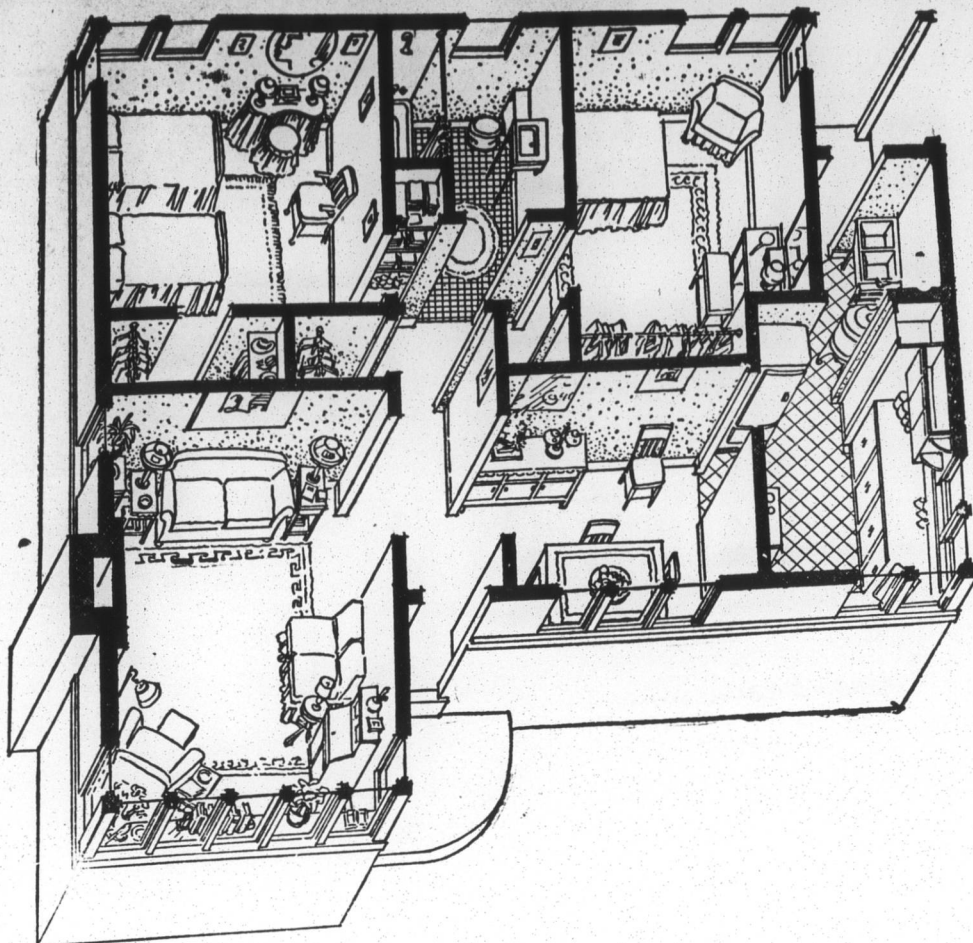
Young, famed as the star of the "Topper" pictures, plays the role of a Bostonian who chose to become a "black sheep" rather than be crushed by the tradition of a Back Bay family. Nancy Kelly is his daughter, a pretty girl faced by the same romantic quandary her father had been in twenty years before. Robert Cummings appears as the young man of her life. Hugh Herbert fills a typical Herbert role, and plays a variety of characters ranging from a valet to a pest exterminator. Albert S. Rogell directed "Private Affairs" from a screenplay by Charles Grayson, Leonard Spigelgass and Peter Milne. The original story was by Walter Green.

checks  
**666** MALARIA  
in 7 days and relieves  
COLDS  
LIQUID - TABLETS - SALVE-NOSE DROPS  
symptoms first day  
Try "Rub-Me-Tum"—a Wonderful Liment



Change To SHELL  
STOP AT YOUR SHELL  
STATION FOR  
ECONOMICAL SERVICE  
Humphries Oil Co

## Small Homes Need Flexible Design



No dwelling can make a satisfactory home which provides merely for the mechanics of living, according to Federal Housing Administration officials. In any house, no matter how small, there must exist a sense of comfort in its appointments and a feeling of charm in its appearance and setting. Standards of design must make for an attractive interior as well as exterior. While it may be necessary to reduce the small home to a minimum in size, it can nevertheless be a well-proportioned home with its openings and arrangements treated with imagination and skill.

The drawing here shows the interior of a small home which falls within the \$3,000-\$3,500 price range. While not offered as a perfect model, it does illustrate what careful planning and good design can do to make a home more livable. In each room the furniture fits snugly into an attractive arrangement, but because of the flexibility of the plan still more arrangements may be made without disturbing the orderliness of the house.

Both bedrooms have large closets, which home owner surveys indicate is not a universal distinction. Corner windows in the bedrooms give more wall space for furniture arrangement, yet do not curtail the light and ventilation. The home is compact and small, but few if any of the essentials for gracious living have been omitted.

## Person Farm Agency Notes

By H. K. Sanders, County Agent

### ONE CASH CROP

Person county needs several farmers to grow certified seed wheat, seed oats and barless barley. Anyone interested in growing certified seed for sale should investigate immediately the possibility of securing seed from the proper sources in order that the 1941 crop may be certified.

Any farmer interested in an additional source of farm income would do well to investigate this subject. Good seed always brings good prices.

### HAY MIXTURES

Now is the time to seed fall mixtures for hay and grazing. Every farm needs several acres of these crops. Some good mixtures are:

For Hay—Mixture No. 1: Oats, 2bu.; Beardless Barley, 1 bu.; wheat, 1 pk.; and vetch, 15 lbs.

Mixture, No. 2: Barley, 1bu.; Oats, 2 bu.; Vetch, 20 lbs.

Mixture, No. 3: Wheat, 1 bu. Barley, 1 bu.; Vetch 20 lbs.

For Grazing — 1. Seed per acre mixture of Abruzzi rye, 1 bu. and barley, 1 bu.

2. Annual Ryegrass, 15 to 25 lbs. per acre. Try this on one acre of your pasture land, just as an experiment, if you have never tried it before. Sow it immediately, without any special preparation of the soil. Harrow it with a section harrow, if convenient to

do so; but this is not absolutely necessary.  
3. Sow a mixture of annual ryegrass and crimson clover for soil improvement.

1. Vetch, 25 lbs.;
2. Crimson Clover, 20 lbs.
3. Austrian Winter Peas, 30 lbs.
4. Abruzzi Rye, 6 pks.
5. Annual Ryegrass .15 lbs.

### FARMERS WHO PLAN TO SEED AUSTRIAN WINTER PEAS

In order that Person county farmers may have concrete evidence of the value of Austrian Winter Peas as a soil-building

crop, the following men have stated that they are seeding this crop this fall: C. T. Hall, E. N. Tillet, J. H. Shotwell, Jasper J. Clayton, J. H. Long, B. C. Mangum, J. T. Newton and R. L. Hunt. The County Agent's office will be glad to have the names of any other farmers in the county who are seeding Austrian Winter Peas. Those who plan to seed these peas should sow 30 lbs. per acre.

### SHOULD BE INOCULATED

Austrian winter peas will be of special value to any farmer who does not have sufficient cropland to rotate crops, but must put corn on the same land year after year. Austrian winter peas seeded on corn land this fall will not only prevent soil erosion this

winter, but will provide a crop to be turned under in the spring that will increase the yield of corn next year. Try it. Sow immediately—30 lbs. per acre—in-cultured.

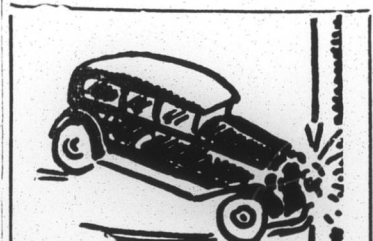
### ORDER GROUND LIMESTONE

Person county farmers have ordered 30 carloads of limestone this year under Grant of Aid without materially affecting their soil-building payments.

There are plenty of farmers who are not earning their soil-building payments enough to justify ordering 100 additional loads. Farmers who have not earned all their units should order limestone before October 10. The only cost will be hauling out the lime and spreading it on the land.

Limestone is especially good on wheat land that is to be seeded to lespedeza or clover next spring. It is also good on lespedeza that was seeded last spring and will re-seed itself in the spring of 1941. Limestone is good on pastures, grasses and all clovers.

Whether you have earned your units or not, you can get limestone under grant of aid. This is your chance to get limestone without much cash. Ask at the Farm Agent's office about limestone under Grant of Aid. Time is out for placing orders for the 1940 crop year about October 10.



**Crumpled Fender Smashed Wheel**  
--one day's damage is more costly than 365 days' insurance with  
**THOMPSON**  
INSURANCE AGENCY  
Roxboro, N. C.

**GOOD BREAD ALWAYS**  
**"SUNRISE"**  
**BECAUSE IT IS MADE GOOD**  
**Roxboro BAKERY Company**  
"Makers of Sunrise Bread"

**Announcing**  
The Opening of  
**Mrs. Gardner's Coffee Shoppe and Dining Room**

**PLENTY TABLES**  
We have plenty of tables to serve many groups all at once. No wait, no inconvenience. Get our rates and menus

**MEALS SERVED**  
Our schedule is as follows:  
Breakfast 6:30 to 9 a. m.  
Lunch 11 to 2 p. m.  
Dinner 5:30 to 8 p. m.  
Parties according to order.

We are happy to announce the opening of our Coffee Shoppe and Dining Room in the former residence of S. B. Davis' on North Main street just below the Western Union. We solicit your patronage and will be most happy to serve you at all times.

**PARTIES, CLUBS SOLICITED**  
As part of our service we specialize in serving parties and clubs. Let us figure with you. We are prepared to offer very attractive menus at rates you will like.

**Life Insurance CAN BUILD YOUR ESTATE**

One of the easiest, quickest and surest ways to build up a nice estate is by means of life insurance. In addition to that you get the best protection in the world. We will be glad to explain.

**WALKER INSURANCE AGENCY**  
J. S. and BILL WALKER  
Roxboro, N. C.