

Person Farm Agency Notes

REGULATIONS AND INSTRUCTIONS ON THE 1940-41 COTTON MATTRESS PROGRAM

By H. K. Sanders, County Agent
Velma Beam, Home Agent

General Plan of Program: The 1940-41 Cotton Mattress Program is a program sponsored jointly by the Extension Service, the Agricultural Adjustment Administration, and the Surplus Marketing Administration (formerly the Federal Surplus Commodities Corporation), under which surplus cotton and mattress ticking are made available to low-income rural families for processing into double-sized mattresses exclusively for home use. The crop of the program is limited to those groups who are financially unable to purchase mattresses from commercial concerns, and it will therefore in no way interfere with the sale of mattresses through commercial channels. This program is a continuation of the Cotton Mattress Project begun in February 1940 in designated counties of the Southern, East Central, Northeast, and North Central Regions.

Under this program the Surplus Marketing Administration (hereinafter referred to as the SMA) donates and ships cotton and mattress ticking to such points in the various counties and in such amounts as requested by the Agricultural Adjustment Ad-

ministration (hereinafter referred to as the AAA). The function of the AAA, acting through its county, State, and Division offices, is to certify eligible families, place orders for the material with the SMA, receive the cotton and ticking at designated points in the various counties, and distribute the material to persons designated by the Extension home demonstration agent for the particular community to receive material on behalf of the community. The Extension Service, acting through its home demonstration agents and county agents, organizes community mattress demonstration clubs, takes applications from rural families for mattress material, designates persons to accept cotton and ticking on behalf of the various committees, and sees that the material is properly made into mattresses by eligible families and then delivered to such families.

Any family, regardless of its place of residence, is eligible for material provided at least one-half of its total income is derived from agricultural occupations and its total income did not exceed \$600.00, plus \$50.00 for each member of the family over 4 persons.

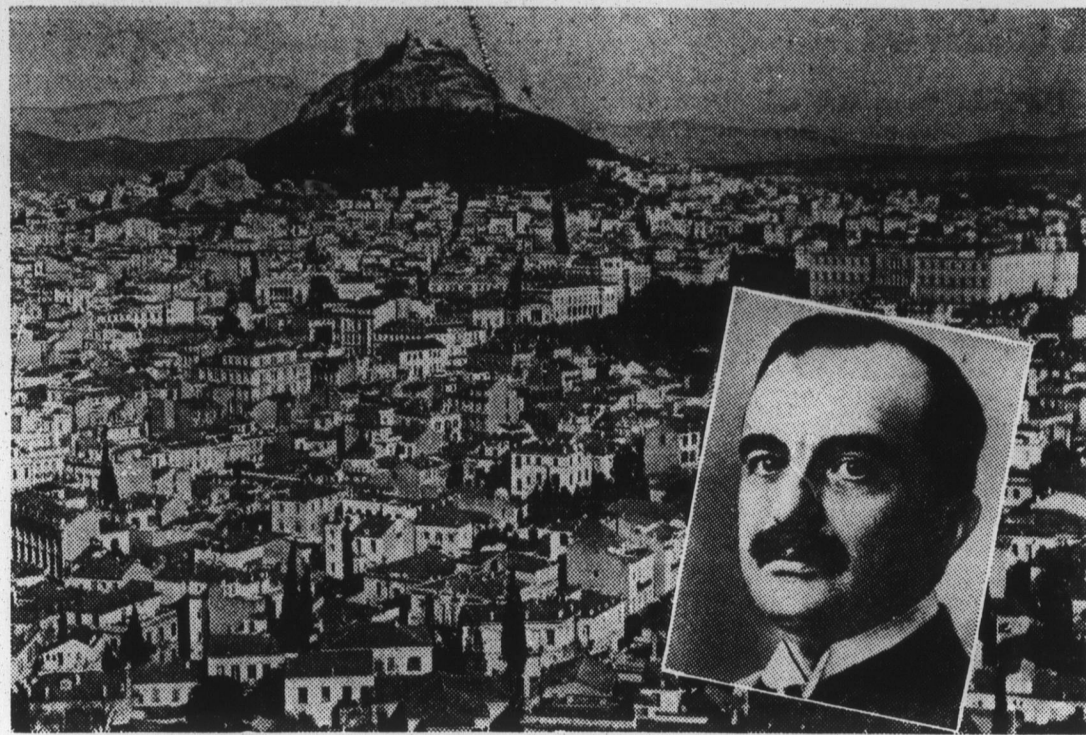
Any family, regardless of its source of income, is eligible for material provided it lives in the country, its total income did not exceed \$500.00 plus \$50.00 for each member of the family over 4 persons.

Total or gross income means all cash income plus local market value of farm products held for sale, minus farm rent paid in cash.

One mattress for every two members of the family, up to three mattresses may be had, except that any mattress previously received shall be deductible.

Each family will be notified when to come to make a mattress.

Greek Capital and Nation's 'Man of Destiny'



A view of the city of Athens, capital city of Greece, which has already felt the wrath of Italian bombers. The first raid took place a few hours after Premier Metaxas and his government defied Italy's ultimatum for unconditional surrender. (Inset) A portrait of Premier John Metaxas, "iron man" of Greece, who urged all Greeks to "fight to the death."

Each family will bring with them at the time they come to make a mattress 5 needles, 1 spool of No. 50 thread, and 1 paper of straight pins.

The SMA furnishes the cotton and mattress ticking and pays the freight charges. Other necessary expenses have to be paid. Each family will make a donation for incidental expenses of making each mattress. The expenses to be paid include making of the mattress tick, supervision, linen thread, tufting and roll-edge needles, tufts, hauling, tables, sewing machines, clerical work, fuel for the winter months in the centers, and other miscellaneous expenses. Since the needles have advanced to twice their original cost it will be necessary for each person who breaks one to pay for it. By careful use breakage may be prevented, but since it has happened several times in the past, we suggest that each family bring enough extra cash to take care of an accidental breakage, 60 cents for the large tufting needle; 30 cents for the small roll-edge needle.

A family consists of two or more persons having a common or pooled income and living together as an interdependent economic unit in one household, or one person maintaining a separate and independent household.

A farm family is any family which derives at least one-half of its income from agricultural occupations, regardless of place of residence.

Maximum Number of Mattresses per Family: Each eligible family may receive one mattress for each two persons in the family, but not to exceed a total of three mattresses. Where one person constitutes a family under the provisions of this program, such person is eligible to receive one mattress. If the family has already received a mattress or has made application for material to make a mattress, under the Cotton Mattress Project, or has received a mattress or the material to make a mattress from the Farm Secur-

ity Administration or the State welfare agency, this is to be included in determining the number of mattresses which the family may receive under the program.

Attractive Package Helps Sell Honey

A good quality of honey, properly packaged, will bring a good price, says Frank B. Meacham, apiarist of N. C. State College. He recommends that the product be packaged attractively.

"In general, the North Carolina beekeepers had high yields of honey this year, and it was of good quality," he said. "Honey seems to move to the consumer better during the cool weather at this season. A display of live bees in an observation hive is a great selling aid with a display of honey in the store or at the open market."

Meacham also reported that the weather in most of the State has been conducive to ideal wintering conditions for bees thus far. "We have had mild weather and there have been some fall honey plants," he stated, "which should help beekeepers to have their colonies strong for the cold weather ahead. It is hardly worthwhile to try to winter weak colonies unless for counting purposes next spring."

"It is safe to assume," he continued, "that our largest honey crops in North Carolina are produced by colonies that are headed by young queens in the fall. They should also have two stories or brood chambers, the first of which should be about full of bees and the other about full of honey. They also need a little drone comb and protection from wintry winds. A well-closed hive is imperative, and a windbreak will help. Weak colonies should be united with strong colonies and a sheet of newspaper placed between them."

Prof. Meacham offers to send

Comedy Called Unconventional

Comedy intermingled with romantic intrigue is the highlight of Universal's "Hired Wife" which co-stars Rosalind Russell, Brian Aherne and Virginia Bruce.

Especially designed for the three stars, this picture, playing today at Dolly Madison Theatre, is crammed with unusual and unconventional situations.

The story deals with a girl who marries her boss, with whom she is in love, merely to get him out of a business jam. And the comedy rises out of the situations she creates by trying to keep him from the girl he loves.

Robert Benchley heads the large supporting cast. The picture was produced and directed by William Seiter. Glenn Tryon was associate producer.

BOUNTIFUL

Wilson county's cotton crop is far above average this year, with most farmers reporting yields of a bale to the acre, says J. A. Marsh, assistant farm agent of the State College Extension service.

CHECKS

Approximately 98 percent of the AAA parity checks have been received and distributed to Northampton county growers, reports H. G. Sinpes, assistant farm agent.



PEEBLES DEPT. STORE

DOLLY MADISON THEATRE

ADVANCE PROGRAM
From Thursday, November 28 through Saturday, Nov. 30th.

Motion Pictures Are Your Best Entertainment

Thursday (THANKSGIVING ONLY) Nov. 28th.

Rosalind Russell - Brian Aherne - Virginia Bruce - Robert Benchley - John Carroll - in "HIRED WIFE" (First Run) In the name of sweet romance - what kind of a proposal was this? A wife in his bedroom - a fiancée on his terrace - a lawyer in his hair - and hopeless confusion in his heart! It's shockingly funny and scandalously grand!

Traveltalks: "CAPITAL CITY OF WASHINGTON, D. C." Matinee 2:30-4:00; adm. 10-30c Evening 7:15-9:00; adm. 10-30c

Friday-Saturday, Nov. 29-30th Gene Autry - Jummy Durante - Ann Miller - Barton MacLane - George "Gabby" Hayes - Mary Lee in "MELODY RANCH" (First Run).

Episode No. 4 of the serial - Zene Grey's "KING OF THE ROYAL MOUNTED" (Devil Doctor) with Allen Lane - Robert Strange - Robert Kelard - Lita Conway.

Popeye the Sailor: "POOP-DECK PAPPY".

Special Morning show Friday 10:30; Afternoon 3:15-3:45; admission 10-30c, Evening 7:15-9:00; adm. 15-30c.

Saturday-Continuous Shows starting at 2:30 p. m., Adm. Adults 30c (Children 10c up to 6:00 o'clock. 15c after 6:00 o'clock).

SPECIAL SHOWS, SATURDAY, NOVEMBER 30TH. Lynce Roberts - Guy Kibbee - John McGuire - Ed Cargan - Jerome Cowan in "STREET OF MEMORIES" (First Run)

A boy who couldn't get a break! A girl who asked no odds! Together they fought for a chance in life! It's the most unusual love story the screen has ever told!

Short: "STRANGER THAN FICTION".
Box office opens Saturday Morning 10:15 - picture 10:30; adm. 10-30c. Box office opens Saturday night 11:15 - picture 11:30; admission all seats 25c.

PALACE THEATRE

ADVANCE PROGRAM
From Thursday, November 28 thru Saturday, November 30th

MOTION PICTURES ARE YOUR BEST ENTERTAINMENT.

Thursday (THANKSGIVING ONLY) Nov. 28th

Frank Morgan, Virginia Grey, Dan Dailey, Jr. - Billie Burke, Ana Morris, Virginia O'Brien in "HULLABALOO".

The merry lowdown on how broadcasts are born - in an uproarious musical radio revel! You'll have tears in your eyes - from laughing! It's a comedy to top all other comedies!

March of Time: "BRITAIN'S R. A. F." Matinee 2:30 - 4:00; adm. 10-30c Evening 7:15-9:00; adm. 15-35c

(FRIDAY ONLY) Nov. 29th Anita Louise - Roger Pryor - June MacCloy in

"GLAMOUR FOR SALE" A Blackmail mob is waiting for you to go out with one of these girls! It's blistering thrills behind the scenes - where lovely "escort" ladies are the "front" for the blackmail boys! Paramount Sound News - The eyes and ears of the world (ON THE STAGE - JACK WARDLAW AND HIS ROLLING RHYTHM REVIEW) No morning show: Afternoon 3:15-3:45; admission 10-30c; Evening 7:15-9:00; adm. 15-35c

Saturday, November 30th / Robert Livingston, Bob Steele, Rufe Davis - "The Three Musketeers" in

"THE TRAIL BLAZER'S" Episode No. 12 of the serial "DIAMOND DICK" (A race against time) with Don Douglas, Lorna Grey, Harry Harver, Maran Sals - Melody Masters: "OZZIE NELSON & ORCHESTRA" Afternoon 2:30-4:00 admission 10-30c; Evening 6:45-8:15-9:30; Adm. 15-35c (Box office opens 6:30).

We Wish You All
A Happy Thanksgiving



and we certainly do thank you for the nice business that you have given us.

Carl Winstead



LEGGETT'S DEPARTMENT STORE

"I've weather-stripped my legs, too"

"I used to feel like a sprinter in winter... half-bare in summer underwear. But now I slip into my HANES Crotch-Guard Wind-Shields for comfortable leg-protection."

Gentlemen, here's a *middleweight* garment that gives you outdoor warmth with indoor comfort. You're really *unaware of underwear!* No buttons or draw strings to bother you... Easy to pull on and take off. The all-round Laster waistband is comfortable - after any meal. And the HANESKIN Crotch-Guard provides gentle athletic support. See your HANES Dealer today!

HANES WINTER SETS 50c to \$1
THE GARMENT

Choose the set you like best. Wear a sleeveless or short-sleeve shirt. Then select a pair of Crotch-Guard Wind-Shields (figure at top) or Crotch-Guard Shorts (shown at left). All cotton (combed) or cotton-wool mixtures.

BOYS' WINTER SETS 39c to 65c
THE GARMENT

HANES HEAVYWEIGHT CHAMPION \$1 OTHERS, 80c to \$2

Ankle-length legs. Long or short sleeves. Accurately cut to match your measure. You can sit or bend - without binding. Buttons, buttonholes, cuffs and seams all securely sewed.

P. H. HANES KNITTING COMPANY, WINSTON-SALEM, N. C.

"Coca-Cola is so refreshing with lunch"

Ice-cold Coca-Cola with lunch is a taste-surprise. Full of life and sparkle and tingling with taste, Coca-Cola and food are a natural combination. For home use, get Coca-Cola in the handy six-bottle carton.

BOTTLED UNDER AUTHORITY OF THE COCA-COLA CO. BY COCA-COLA BOTTLING WORKS OF ROXBORO