

**CABLE SPINET PIANOS**  
**Radios and Musical Instruments**  
 RECONDITIONED PIANOS  
 EXPERT RADIO SERVICE  
**COX MUSIC HOUSE**  
 Phone 7040 14 Biltmore Ave. Asheville, N. C.

**BLACK MOUNTAIN INSURANCE AGENCY**

GENERAL INSURANCE and BONDS  
 Representing Leading Stock Companies

Greene Building

BLACK MOUNTAIN, N. C.



SAY IT WITH FLOWERS

Let Us Help You Plan Your Wedding Flowers  
 We Telegraph Flowers

Funeral Sprays And Wreaths Our Specialty  
**GREGG --- THE FLORIST**

Cor. State and Dougherty Sts.  
 BLACK MOUNTAIN, N. C.

**Your General Electric Dealer**

STROMBERG — CARLSON, R.C.A.  
 AND ZENITH RADIOS

Launderall and G. E. Washing Machines  
 Lamps and Electrical Fixtures Of All Types  
 Automotive Accessories and Parts  
 Refrigeration and Commercial Belts  
 Full Line O'Cedar Products  
 RADIO SUPPLIES AND SERVICE  
 Complete Line of Hearing Aid Batteries  
 Complete Kitchen Units On The Way  
 Watch Our Windows For New Merchandise

**Viverette Radio And Supply Co.**

Black Mountain, N. C. Phone 4952



THE FINEST G-E APPLIANCES EVER!

YOU GET MORE CUPS OF GOOD COFFEE PER POUND



**JFG COFFEE**  
 THE BEST PART OF THE MEAL

SOLD BY ALLRED MERCANTILE COMPANY



**New Columbia Sheep—Made-to-Order Breed**

Developed for Dual-Purpose Requirements

The need for a breed of sheep that would produce both wool and meat efficiently resulted in work being undertaken by the USDA about 1912 to find such a breed.

The result of years of extensive work was the introduction of the Columbia sheep, which combined the most desirable characteristics of the Lincoln and Rambouillet. The breed was more than a quarter of a century being developed.

The breed as developed to such a point that it has its own registry organization, the Columbia Sheep Breeders' association. It is primarily a range sheep but is being used to a moderate extent in farming areas.

Columbia sheep are free from wool-blindness and skinfolds. The body is long, but is symmetrically proportioned with a good balance between width and depth. In 12



An Idaho Columbia ram showing the desirable characteristics of this newer breed.

months a typical Columbia ewe grows a fleece weighing about 12 pounds, which contains approximately 50 per cent clean wool about 3 1/2 inches long.

**New Corn Ear Worm Control Recommended**

A new contact insecticide has recently been developed for the control of corn ear worm on sweet corn and hybrid seed corn, as a substitute for pyrethrum.

The spray is a liquid solution of styrena dibromide in a mineral oil and is applied to the corn silks as soon as their ends appear brown. It is necessary to treat more than once as all ears do not show brown at the same time. The spray is applied with a hand applicator which measures a 20 drop dosage from a half pint container.

**Feather Fabric Will Add to Farm Income**



The washed, stretched and dried fibers are wound on spools.

America's poultry industry can produce 35 million men's suits annually. A new feather fabric that looks like wool but is warmer, softer and lighter, has been developed by USDA specialists.

Feather protein is converted into fiber by treating the feathers with a reducing agent and a special type of wetting agent, or detergent, in water solution, then forcing the resulting spinning solution, or "dope," through the tiny holes of a spinnerette into an acid-and-salt solution that sets the streams of dope into fibers. The fibers are then stretched and dried and treated to remove the detergent so that the regenerated protein is left in true fiber form.

It is not expected that feather fabrics, due to small volume available, will ever prove a serious economic threat to cotton or wool, nevertheless feathers do offer additional revenue for the poultryman, and will compete more with higher priced fabrics.

**Cultivation Increases Bermuda Grass Yields**

Oklahoma experiments have proved that disking the grass sod of bermuda lightly every other year will cause an increase in yield of about 26 per cent. The tests were made on a thin or poor stand of grass.

It was found that bermuda would respond to heavier disking than the common native grass. Tillage seemed to prevent the grasses from dying in the center of the clumps.

Attend Sunday School Sunday!

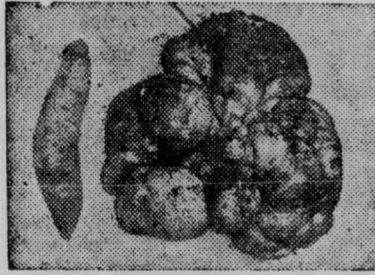
**Sweet Potato Variety Good Starch Source**

Large Yield Makes It A Profitable Farm Crop

By W. J. DRYDEN

The sweet potato is fast taking its place as the main source of starch. This is largely due to the fact that starch can be produced or extracted easily from sweet potatoes and of the large volume that can be produced per acre.

Starch and its derivatives are used in the production of almost



Starch potato, right, and ordinary yam at left. The yam weighs a pound and a half, the starch potato weighs more than 7 pounds, some grow as much as 18 pounds.

every item of commerce — from cream puffs to dynamite. In the wastelands of the Florida Everglades, the United States Sugar corporation is carrying on vast operations in the producing and manufacture of sweet potato starch. They now have requirements for 40 freight cars of sweet potatoes daily.

The starch sweet potato is a special variety developed and tested for years. It grows as large as a man's head and contain a much higher starch content than the table varieties. The yields are from 500 to 700 bushels per acre.

By-products are also important. Pulp stock-feed production as well as the vines for livestock feed have high nutritive value. The waste water is decomposed and gas used in power plant, the solids producing a high quality fertilizer.

Not only for Florida, but other sections where climate and soil production is suitable, this industry will prove of increasing interest and value to farmers. It has proved financially sound and the need for this quality starch is ever increasing.

**Telephone Wires Not Used by New System**

Power Lines to Carry Voices in Rural Zones

A new telephonic communications era has begun for the nation's farm families. Tests made in Arkansas and Alabama by the telephone, private power companies and the REA have proven the feasibility of "talking" over the same rural power lines



Claude Gregory, president of Craighead REA co-operative, Jonesboro, Ark., making one of first calls over the carrier current telephone.

which provide farmers with electric energy.

Outwardly, the new and old telephonic equipment looks very much alike. In the new system, however, speech is transmitted over power wires by means of a carrier wave of radio frequency produced by electronic tubes, located either in a small box adjacent to the telephone or attached directly to the instrument. A device called a "coupler," placed on a pole outside each telephone user's house, allows the carrier current to enter and leave the lines but prevents the power current from interfering with transmitting and receiving instruments.

Equipment, to change the high frequency current back to normal voice frequency, is located at a point on the power line where vocal messages are channeled over wires to the telephone central office. The new system, experiments on which were started by Bell laboratories and REA in 1938, is expected to "telephonically link" thousands of families who now reside along rural power lines but are too far off the beaten path to be reached by existing telephone lines. Approximately three million farms are now electrified and scores of others are being added daily.

Have You Subscribed

YOUR "SHIP WILL COME IN" Sooner By the Aid of Newspaper ADVERTISING



Ties for Dad



EACH ONE A BEAUTY

Dad will be happy as a lark when you gift him with our new, hand painted ties... our smooth famous — brand ones. — Come in today and see our selection.

\$ 1. 00

SEE OUR OTHER GIFTS

BELKS Marion N. C.

**DDT Use for Hairy Vetch Recommended**

Recent experiments at Oregon, Maryland and Wisconsin experiment stations would indicate that the use of DDT, while causing some injury to honeybees, may offer advantages that will overcome these losses and even prove a blessing to the beekeeping industry.



When hairy vetch was dusted for the hairy vetch weevil, at the rate of 3 per cent DDT dust, 25 pounds per acre, effective control was secured. Bees were in most cases absent from the dusted fields for several days following the dusting. As hairy vetch is of considerable importance to the beekeepers in many regions, and as the weevil would soon kill out the crop, the importance of these tests is of considerable interest and value.

Job printing—all kinds.  
 THE BLACK MOUNTAIN NEWS  
 SEND IN YOUR NEWS

We do Job Printing.



Guaranteed Radio Service

Also repairs on Toasters, irons and small appliances.

- GOFF -

RADIO SERVICE  
 Opposite Post Office

**It's Spring Time!**



It's Time To Visit Our Stores For

**FIELD AND GARDEN SEED**

GARDEN SEED—ALL VARIETIES

- |           |              |
|-----------|--------------|
| Beans     | Pepper       |
| Beets     | Cabbage      |
| Cucumber  | Collards     |
| Squash    | Carrots      |
| Lettuce   | Pumpkin      |
| Onion     | Spinach      |
| Okra      | Radish       |
| Egg Plant | Melons       |
| Turnips   | Cantaloupes  |
| Mustard   | English Peas |
| Tomatoes  | Lima Beans   |

FIELD SEED—ALL VARIETIES

- |           |                 |
|-----------|-----------------|
| Corn      | Grasses         |
| Cane      | Lespedeza       |
| Peas      | Clover          |
| Millet    | Crotolaria      |
| Soy Beans | Alfalfa         |
| Oats      | Pasture Mixture |
|           | Popcorn         |

**FARMERS FEDERATION**

Have Another Cup



"The Best Part of the Meal"

SOLD BY BLACK MTN. GROCERY CO.