

RENT IT! — CLASSIFIEDS! ••• RENT IT! — CLASSIFIEDS!

Raleigh Roundup

(Thursday, Dec. 8)

WAKE FOREST—It's a season indeed when one of our schools—Carolina, State, Wake Forest—is not in some kind of sports shape. Wake Forest's time, checking I was able to do my Wake Forest friends and the alumni—many of them avoid Deacon supporters and avoid those of them leaders in the club—were very much surprised and shocked to read in Sunday's newspapers about resignations of Athletic Director Pat Preston and Head Football Coach Tom Rogers.

CLOSER HOME—The state of Preston that he is stepping out in the best interests of family and me" caused some eyebrows, because a lot of thought Preston would be able to get in Winston-Salem at Wake Forest.

There would be much closer home the college moves to the City next year. He grew up in Thomasville, only a whoop-and-roller from Winston-Salem, and wife is Avalon Hall's daughter.

Avalon is a native of Yadkin county, grew up there in Yadkin county, and for many years was this county's only Republican superior court judge. He was beaten out by years ago by Allie Hayes, a Democrat, and Johnson J. Hayes, a Republican, and the only Republican to be elected to the office of superior court judge in North Carolina. Incidentally, both Allie and Johnson J. are leading Wake Forest alumni.

WHAT NEXT?—There is a going on behind the scenes—has been for some time—in the Wake Forest athletic situation. When the board of trustees meets in Winston-Salem on Dec. 15, the resignations will be formally presented to the group.



GULF
SOLAR HEAT
heating oil

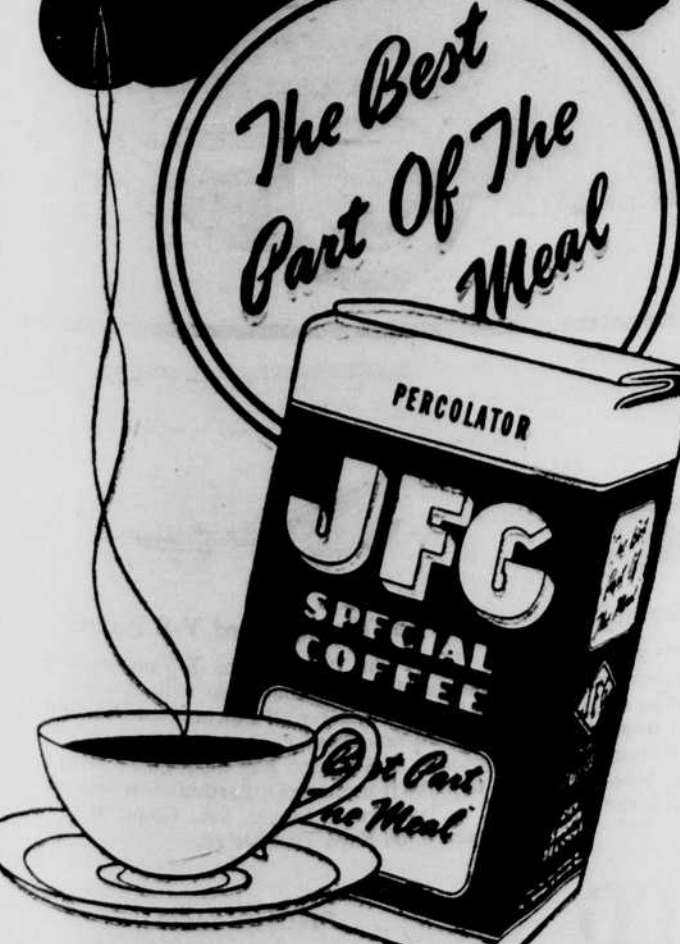
The emblem recognized in more than **A MILLION HOMES** As the hallmark of clean heat-comfort

We believe in supplying the best!

Williams Bros. Distributors

Black Mountain — Dial 7110

Nothing can replace a cup of good coffee



The Best Part Of The Meal
JFG
SPECIAL COFFEE
PERCOLATOR

Here Are Ways To Be Certain Of A Merry Christmas

After they put the blaze out, firemen counted 12 dead—10 of them children. The time? Christmas, 1954—the worst on record when measured in terms of sudden death from traffic accidents, fires, falls, drownings, and other miscellaneous mishaps. In all, 504 persons that Christmas week-end died as a result of accidents. And 60 of them were fire's victims.

A week-end later, New Year's, 1955, 340 more met sudden death, this time 26 by fire. And when fire was the cause, how had it occurred? Why? Was it the gayly-lighted Christmas tree? Defective wiring? A lighted cigarette carelessly discarded?

It could have been any one of these causes or one of many others as well. But when all are reduced to a common denominator, the cause is carelessness. And this can be avoided.

Potential Hazard. Take the Christmas tree, for instance. It's a potential fire hazard.

place in North Carolina sales—behind Ford, Chevrolet, and Buick, it is moving fast. Sales through October came to 3,138. In October, this year sales totaled 928—and only 253 for October of 1954.

2 MARK II—Two Continental Mark II's have been sold—both of them cash deals—in North Carolina. They are selling at about \$8,000. I haven't found out who bought them—but hope to dig out these facts and report them to you.

Here Are Ways To Be Certain Of A Merry Christmas

When you bring the tree inside, cut the butt slantwise to open the pores, then stand it in a tub of water. Be wary of chemicals or other substances sold for "fire-proofing" trees. In some cases this process is ineffective.

In placing the tree, it's best to avoid "hot spots" such as those near the fireplace, stove, television set, radiator, or electric bulbs. Never use untreated paper ornaments or untreated cotton bunting or gauze for decoration. Cotton and gauze can be made flame-resistant by dipping in a gallon of water mixed with nine ounces of borax and four ounces of boric acid.

Look for UL Label. Also, use only electric lights, never candles. Be sure, too, that wires are in good condition and bear the UL mark denoting Underwriters' Laboratories, Inc., which shows they have been tested for safety. Frayed electric cords are a fire hazard.

The switch for turning on the tree lights should be placed some distance from the tree. Never use an outlet or plug under the tree or run electric trains around the base.

Here are some other suggestions: If decorations are used about the house, do not permit them to be around or near to chairs and other places where people may smoke. It is preferable to have them up near the ceiling, well above the head of anyone standing up.

Keep plenty of ash trays about the house during the holiday season, as always. If lights are desired in windows, never use candles. Keep curtains and other flammable material pulled back at least six inches from any electric light. Use non-flammable decorations of glass or metal, and "fire-proof"

NCEA Loan Fund Set Up For State

The North Carolina Education Association Board of Directors has set up a fund to be known as the NCEA Loan Fund to be used to help provide a sufficient supply of adequately prepared teachers for the children of the State," Mrs. Ethel Perkins Edwards, NCEA executive secretary, announced today.

The loan fund will enable the NCEA to assist promising students desiring to enter the teaching profession in financing their college education, Mrs. Edwards said in explaining the purpose of the fund.

Information about details of the student loan fund is being distributed to high schools and colleges throughout the state. Additional information and details about how to apply for loans may be secured from Mrs. Ethel Perkins Edwards, at NCEA Headquarters in Raleigh.

Wrap the rug or blanket around the neck first, to keep the poisonous gases of combustion away from the face.

If no rug, blanket or coat is available, roll the victim over and over on the floor to smother the flames. Running only fans the flames. Since all fire gases rise, a victim in an upright position tends to inhale the toxic gases. It is in knowing what to do in these situations that will save your life.

Some of the 60 who died last Christmas didn't know.

NCEA Loan Fund Set Up For State

The North Carolina Education Association Board of Directors has set up a fund to be known as the NCEA Loan Fund to be used to help provide a sufficient supply of adequately prepared teachers for the children of the State," Mrs. Ethel Perkins Edwards, NCEA executive secretary, announced today.

The loan fund will enable the NCEA to assist promising students desiring to enter the teaching profession in financing their college education, Mrs. Edwards said in explaining the purpose of the fund.

Information about details of the student loan fund is being distributed to high schools and colleges throughout the state. Additional information and details about how to apply for loans may be secured from Mrs. Ethel Perkins Edwards, at NCEA Headquarters in Raleigh.

Wrap the rug or blanket around the neck first, to keep the poisonous gases of combustion away from the face.

If no rug, blanket or coat is available, roll the victim over and over on the floor to smother the flames. Running only fans the flames. Since all fire gases rise, a victim in an upright position tends to inhale the toxic gases. It is in knowing what to do in these situations that will save your life.

Some of the 60 who died last Christmas didn't know.

BLACK MOUNTAIN INSURANCE COMPANY

GENERAL INSURANCE and BONDS
Representing Leading Stock Companies

GREENE BUILDING
BLACK MOUNTAIN, N. C.

Prescription Service

You may depend on us for prompt, efficient Prescription Service.

When you need a prescription filled, just call on us. Our long experience and large stock of Pharmaceuticals mean quickest service for you.

So, when your doctor gives you a prescription, stop in here or PHONE US 4121. WE DELIVER.

For emergency prescription service PHONE 6111.

BLACK MOUNTAIN DRUG CO.

UZZELL'S REXALL
(Corner State and Broadway)

★ COMPLETE PHOTO — FILM SERVICE ★

- HALL MARK CARDS
- WHITMAN CANDY
- REVLON
- PLAYTEX BABY DEPT.

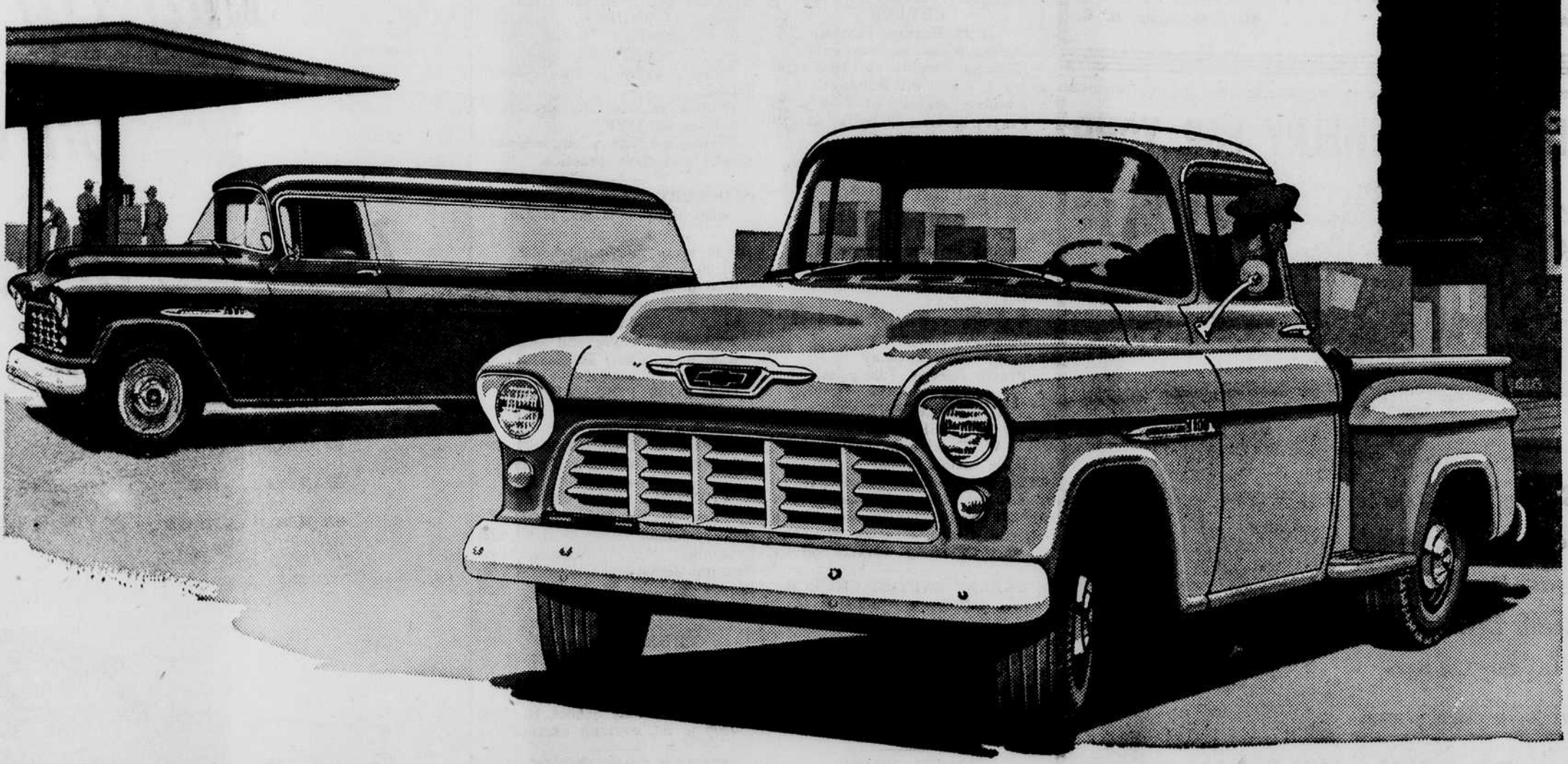
CHRISTMAS TREES

AGAIN THIS YEAR, THOSE BEAUTIFUL, CLEAN SMELLING, LONGER LASTING BALSAM CHRISTMAS TREES

Will be available in the Lot Across the Street from the A&P Store, Next to the Eckles Building.
For Information, or to Order Trees, CALL 3621 Days — 7344 Nights.



Watch your Step! Look for new CONCEALED SAFETY STEPS—a mark of today's most modern trucks that new Chevrolet Task-Force trucks bring you. They stay clear of snow, mud and ice to give you firmer, safer footing.



You get today's most modern features in

New Chevrolet Task-Force Trucks

Ball-Gear steering for easier handling. 12-volt electrical system for quicker starting. And that's only the beginning!

Here's where you find today's most modern truck features! Like functional Work Styling—styling that fits the job! Inside the cab, you'll find greater visibility with the sweeping new panoramic windshield. Greater comfort, too, with new High-Level ventilation. And under the hood, you'll see the latest thing in truck power! The shortest stroke V8* in any leading truck—or the newest edition of Chevrolet's famous truck 6. It all adds up to simply this: Anything less is an old-fashioned truck. Come in and let us prove it to you.

*V8 is standard in L.C.F. models, optional in most other models at extra cost.

Year after Year, America's Best Selling Truck 

McMurray Chevrolet Co.

STATE STREET PHONE 3141 BLACK MOUNTAIN

Watch the Deal!

WHY PAY MORE FOR AN OLD-FASHIONED TRUCK?

You'll still find the same low price tags on new Chevrolet Task-Force trucks. No increases! Get our deal—and be money ahead.