

# BLACK MOUNTAIN P.T.A. WILL MEET TONIGHT, 7:30

# BLACK MOUNTAIN NEWS

DEVOTED 100% TO OUR COMMUNITY — THE GROWING SWANNANOVA VALLEY

## Weather

	High	Low	Prec.
Sept. 6	86	58	.03
Sept. 7	82	64	.02
Sept. 8	79	62	
Sept. 9	84	60	.26
Sept. 10	81	60	T
Sept. 11	78	64	1.07
Sept. 12	75	61	.02

VOL. 16.

THURSDAY, SEPTEMBER 15, 1960, BLACK MOUNTAIN, NORTH CAROLINA

8 PAGES TODAY

NO. 3 — Single Copy, 10c

## REFLECTIONS

Gordon Greenwood

### Kennedy Will Speak Saturday In Asheville

Senator John F. Kennedy, Democratic nominee for President of the United States, will make a public address at McCormick Field, Asheville, Saturday, Sept. 17, 1960, at 1:30 p.m. His address will be open to the public and everyone is invited to attend.

It is expected that a caravan will originate in each of the counties of North Carolina to proceed to McCormick Field, arriving by 12:00 o'clock noon.

In the party with Senator Kennedy will be Gov. Luther H. Hodges, United States Senators Sam J. Ervin and B. Everett Jordan, Terry Sanford, Democratic nominee for governor, H. Cloyd Philpott, Democratic nominee for Lt. Governor, together with other dignitaries. Also accompanying the party will be nearly 200 newsmen, both state and national.

Senator Kennedy's appearance at Asheville will follow a brief press conference in Greenville, N. C., and a brief speech at the airport in Greensboro. After his address at McCormick Field in Asheville, Senator Kennedy plans to fly to Charlotte in the late afternoon, and then to Raleigh where he will appear on a state-wide television and radio broadcast at night.

This is the first time that a candidate for President of the United States has campaigned in Western North Carolina since William Jennings Bryan, President Franklin D. Roosevelt appeared at the same McCormick Field in 1936, where he was here as President of the United States in connection with the dedication of the Great Smoky Mountains National Park.

It is expected that the appearance of Senator Kennedy, together with all the state and national officials in North Carolina, will draw a tremendous crowd to McCormick Field. Officials request that persons attending arrive at McCormick Field as early as possible. The appearance of Senator Kennedy on the stand to make his address will be preceded by an entertainment program and the presentation of candidates and Democratic officials of Western North Carolina.

It is requested that all persons proceed directly to McCormick Field, as Senator Kennedy will not make a public appearance at the airport upon arrival, and it is possible that he may be transported from the airport to the field by helicopter.

Mr. and Mrs. J. Herbert Coman, another well known young couple in the SwannanoVA Valley, have their new home under construction on a portion of the Alexander property which lies on the south side of old US 70 just south of Grovemont. The Comans are now living in one of the original homes in the Grovemont development but look forward to being able to move into their new home in the early fall. Their home is being built for them by Harold Crisp, builder of Asheville, from plans prepared by H. McGuire Wood of Black Mountain. Mr. Coman is personnel manager for Beacon Manufacturing company.

Mr. and Mrs. Leslie Garton  
—Turn to Page 5

**Rotary C. Sees "Man In Space"**

Marion Stubbs, vice president of the Black Mountain SwannanoVA Rotary club, presided over the noon luncheon meeting of the club Monday at Don's Outpost, in the absence of President Wilbur Ward.

Leonard Keever, principal of the Black Mountain Elementary school, who was a guest of Jim Owen, showed a Walt Disney science movie titled "Man In Space."

The movie traces man's history of rocket theory from the ancient Chinese fire crackers down to a hypothetical trip into outer space by man.

It also showed the many obstacles that are necessary to overcome before such a trip can become a reality.

Two out of town guest Rotarians were in attendance at the meeting.

**C of C Will Meet Tuesday, Sept. 20 At Monte Vista**

The Black Mountain Chamber of Commerce will meet Tuesday, Sept. 20, at the Monte Vista hotel. The time is 12 o'clock noon. Max Woodcock, president, will preside.

**PLEASE GIVE US A PHONE CALL**

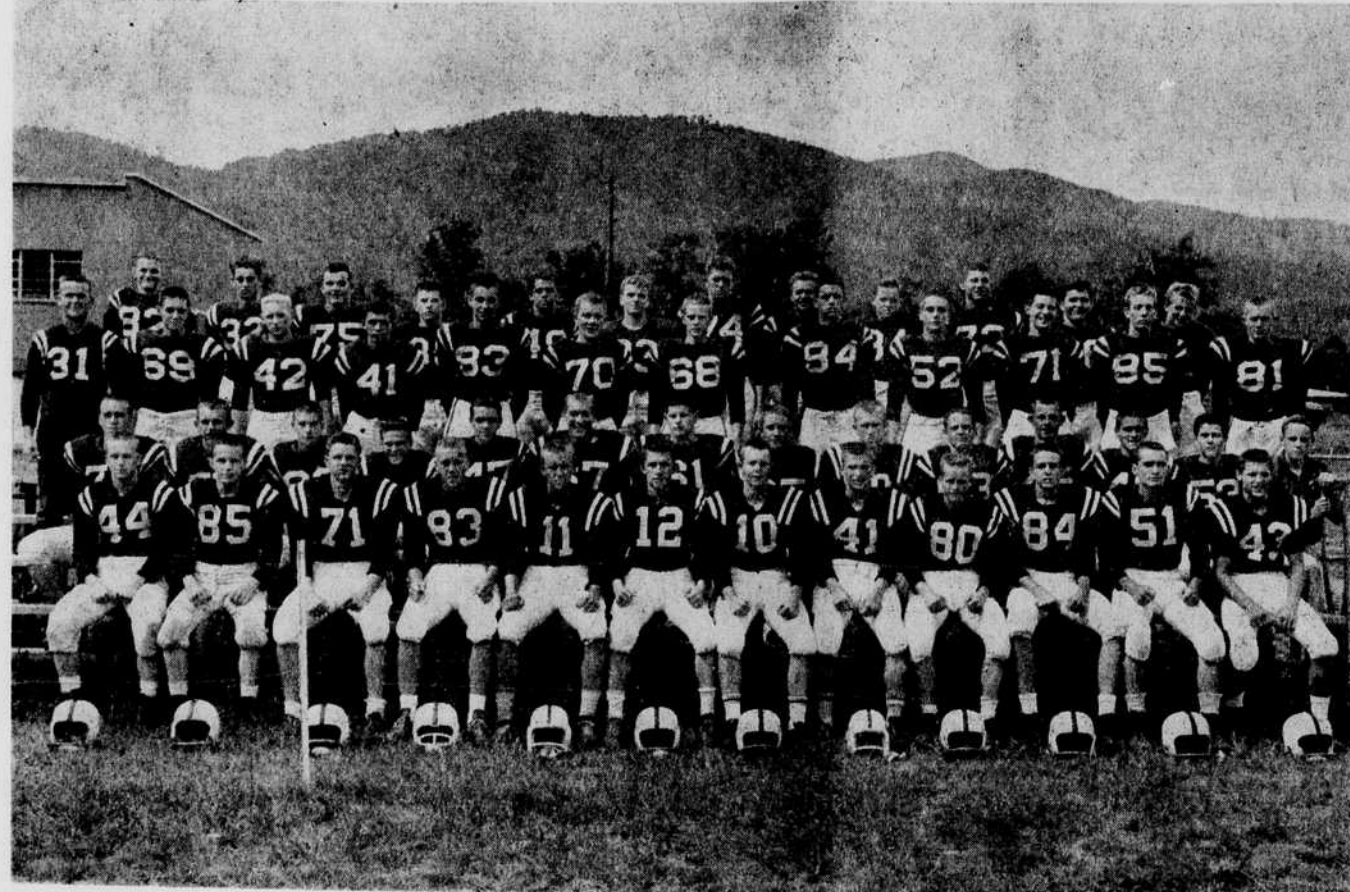
Will those of you who have sons and daughters who are going away to college this year, please give the News a call and tell us of them? We would like to have a complete list for next week's paper, but without your help it will be impossible.

**GARDEN DIVISION WILL MEET SEPT. 19 AT OAK KNOLL**

The Garden division of the Women's club will meet at "Oak Knoll," the home of Mrs. Mary E. Aleshire, with Mrs. Glenn Morgan as assistant hostess Monday morning, Sept. 19, at 10 o'clock.

**CHRISTIAN WOMEN'S FELLOWSHIP BENEFIT SUPPER, SEPT. 17**

A supper for the benefit of the Christian Women's Fellowship of the First Christian church will be given Saturday, Sept. 17, from 5 to 7 p.m. at the home of Mrs. Leroy Mashburn with Mrs. Glenn Morgan and Mrs. J. O. Morgan assisting. The price will be \$1 per plate.



### Black Mountain Builders Busy On New Homes

Mr. and Mrs. Robin Amoss moved into their new home in the Charmeldee Acres tract on the McCoy Cove road last week. They had been living in one of the George Field houses on McCoy Cove road while their new home was being built by C. "Cliff" Meyers, builder. Plans for the Amoss home were prepared by H. McGuire Wood of Black Mountain.

Mrs. Amoss was born and reared in New England but they had lived most of their married lives in Glenelg and in Wheaton, Ill., both communities close to Chicago. Mr. Amoss was associated with the V. Mueller and Company of Chicago, an internationally known manufacturer of surgical instruments. He was secretary of the company when he retired and moved to Black Mountain.

The new home for Mr. and Mrs. William McMurray, Jr. is taking shape on North Fork road adjoining Lakewood in the new Alexander tract being developed by Valley Real Estate of Black Mountain.

The McMurray home is being built by Frank Byrd, builder of Black Mountain, from plans drawn by H. McGuire Wood. The new colonial design home features large, light, basement recreation areas which will be enjoyed by the young family who are moving here from our neighboring community of SwannanoVA. Mr. McMurray and his father have operated the McMurray Chevrolet agency here for many years.

Mr. and Mrs. J. Herbert Coman, another well known young couple in the SwannanoVA Valley, have their new home under construction on a portion of the Alexander property which lies on the south side of old US 70 just south of Grovemont. The Comans are now living in one of the original homes in the Grovemont development but look forward to being able to move into their new home in the early fall. Their home is being built for them by Harold Crisp, builder of Asheville, from plans prepared by H. McGuire Wood of Black Mountain. Mr. Coman is personnel manager for Beacon Manufacturing company.

Mr. and Mrs. Leslie Garton  
—Turn to Page 5

**Rotary C. Sees "Man In Space"**

Marion Stubbs, vice president of the Black Mountain SwannanoVA Rotary club, presided over the noon luncheon meeting of the club Monday at Don's Outpost, in the absence of President Wilbur Ward.

Leonard Keever, principal of the Black Mountain Elementary school, who was a guest of Jim Owen, showed a Walt Disney science movie titled "Man In Space."

The movie traces man's history of rocket theory from the ancient Chinese fire crackers down to a hypothetical trip into outer space by man.

It also showed the many obstacles that are necessary to overcome before such a trip can become a reality.

Two out of town guest Rotarians were in attendance at the meeting.

**C of C Will Meet Tuesday, Sept. 20 At Monte Vista**

The Black Mountain Chamber of Commerce will meet Tuesday, Sept. 20, at the Monte Vista hotel. The time is 12 o'clock noon. Max Woodcock, president, will preside.

**PLEASE GIVE US A PHONE CALL**

Will those of you who have sons and daughters who are going away to college this year, please give the News a call and tell us of them? We would like to have a complete list for next week's paper, but without your help it will be impossible.

**GARDEN DIVISION WILL MEET SEPT. 19 AT OAK KNOLL**

The Garden division of the Women's club will meet at "Oak Knoll," the home of Mrs. Mary E. Aleshire, with Mrs. Glenn Morgan as assistant hostess Monday morning, Sept. 19, at 10 o'clock.

**CHRISTIAN WOMEN'S FELLOWSHIP BENEFIT SUPPER, SEPT. 17**

A supper for the benefit of the Christian Women's Fellowship of the First Christian church will be given Saturday, Sept. 17, from 5 to 7 p.m. at the home of Mrs. Leroy Mashburn with Mrs. Glenn Morgan and Mrs. J. O. Morgan assisting. The price will be \$1 per plate.

Here are members of the 1960 Owen High School Warhorses who will open the home season here at Shuford Field Friday night with a Blue Ridge conference game against Bethel. Game time will be 7:30.

Squad members include Bobby Ball, Marvin Harper, David McFee, quarterbacks.

Howard Lewis and Dean Brown, fullbacks.

Halfbacks, Don Metcalf, Jerry Morrow, Tommy Hughes, Jackie Hughes, Tommy Bell, Louis Severson, Cecil Caldwell, Ray Heath, Jack Jarrett, Eugene Smith, Ted Smith, Larry Tweed, and Eric Jolley.

Centers, Jimmy Dillingham, Randy Champion, Jimmy Beddingfield, and Eddie Smith.

Guards, Russell Hall, Ronnie Lowe, Preston Timmerman, Bruce Clapp, Mac Blizard, Charles Blaine, Malcolm Burnette, and Fred Burgin.

Tackles, Robert Watkins, Pedro Cordell, Robert Turner, Jim Cunningham, Larry Plummer, Lloyd Brown, Bob "Mur" Peterson, and David Synpes.

Ends, Jackie Davis, Avery Allen, Bobby Leonard, Butch Swofford, Bobby Lowe, Tommy Owensby, Ervin Shepard, Ritchard Pitman, and Bill Metcalf.

—Photo by Ed DuPuy

**Old Fort, Black Mountain Will Receive Funds**

Black Mountain will receive a total of \$6,573.85 and Old Fort \$3,506.67 in allocation of Powell Bill funds announced today by the State Highway Department in Raleigh.

They were among 409 participating municipalities in North Carolina.

The funds are distributed annually to qualified cities and towns for use in non-highway street work within their corporate limits. Checks will be mailed to Black Mountain and Old Fort town officials along with the others on Sept. 30.

Powell Bill funds represent one-half cent of the regular State gasoline tax and this year's total allocation represents a 3.6% increase over last year. Over the 10-year period in which the Powell Bill law has been in effect, a total of \$58,797,140.55 has been distributed. The number of participating municipalities is 414.

—Turn to Page 4

**Youth Program Warhorses Will Meet Bethel Friday Night**

Football fans of the SwannanoVA Valley will get their first look at the 1960 Owen High School Warhorses when the charges of Coach Howard Barnwell take on Bethel in a Blue Ridge conference game at Shuford Field Friday evening. Kickoff time has been set for 7:30.

Because of injuries suffered by key players in the Asheville High contest last week, the locals are not expected to be at full strength.

Bethel is always strong and last year played the Warhorses to a tie in the last few seconds of the game when a long run brought victory for the Owen High 11.

Although beaten 30-6 by a heavier, more experienced Lee Edwards team last week, the Warhorses showed flashes of power and fans expect them to develop as the season moves along.

Unable to move against the enemy line, the Warhorses went to the air and scored a touchdown and completed 11 out of 24 tries for an extremely good showing in this department. The score came on a pass from Marvin Harper to Bobby Lowe, the play covering 15 yards.

Fumbles hurt the Warhorses in the early stages of the game and they fell two touchdowns behind early in the first quarter. In the second the Asheville High line broke through and tossed Owen backs for two safeties.

First downs Owen LEH  
Rushing yardage 6 11  
Passing yardage 21 276  
Passes 68 14  
Passes intercepted 0 6-1  
Fumbles 7-40-2 7-39  
Fumbles lost 3-3 2-1  
Yards penalized 67.5 85  
Score by Quarters:  
Lee Edwards 12 4 7 7-30  
Owen 0 4 0 0-6

**DISTRICT DEPUTY GRAND MATRON TO PAY OFFICIAL VISIT**

Mrs. Mildred J. McLean, District Deputy Grand Matron of the 20th District of North Carolina, Order of the Eastern Star, will make her official visit to Black Mountain Chapter, Order of the Eastern Star, Tuesday, Sept. 20, 8:00 p.m. She will be accompanied by Mrs. W. Kelly Roberts, District Deputy Grand Patron.

**Black Mountain PTA Will Meet At 7:30 Tonight**

The Black Mountain PTA will meet Thursday night (tonight) in the Primary school auditorium. All parents are urged to attend.

The meeting will begin at 7:30. Carl Bonness, president, will preside.

**Warhorses Will Meet Bethel Friday Night**

Football fans of the SwannanoVA Valley will get their first look at the 1960 Owen High School Warhorses when the charges of Coach Howard Barnwell take on Bethel in a Blue Ridge conference game at Shuford Field Friday evening. Kickoff time has been set for 7:30.

Because of injuries suffered by key players in the Asheville High contest last week, the locals are not expected to be at full strength.

Bethel is always strong and last year played the Warhorses to a tie in the last few seconds of the game when a long run brought victory for the Owen High 11.

Although beaten 30-6 by a heavier, more experienced Lee Edwards team last week, the Warhorses showed flashes of power and fans expect them to develop as the season moves along.

Unable to move against the enemy line, the Warhorses went to the air and scored a touchdown and completed 11 out of 24 tries for an extremely good showing in this department. The score came on a pass from Marvin Harper to Bobby Lowe, the play covering 15 yards.

Fumbles hurt the Warhorses in the early stages of the game and they fell two touchdowns behind early in the first quarter. In the second the Asheville High line broke through and tossed Owen backs for two safeties.

First downs Owen LEH  
Rushing yardage 6 11  
Passing yardage 21 276  
Passes 68 14  
Passes intercepted 0 6-1  
Fumbles 7-40-2 7-39  
Fumbles lost 3-3 2-1  
Yards penalized 67.5 85  
Score by Quarters:  
Lee Edwards 12 4 7 7-30  
Owen 0 4 0 0-6

**Warhorses Will Meet Bethel Friday Night**

Football fans of the SwannanoVA Valley will get their first look at the 1960 Owen High School Warhorses when the charges of Coach Howard Barnwell take on Bethel in a Blue Ridge conference game at Shuford Field Friday evening. Kickoff time has been set for 7:30.

Because of injuries suffered by key players in the Asheville High contest last week, the locals are not expected to be at full strength.

Bethel is always strong and last year played the Warhorses to a tie in the last few seconds of the game when a long run brought victory for the Owen High 11.

Although beaten 30-6 by a heavier, more experienced Lee Edwards team last week, the Warhorses showed flashes of power and fans expect them to develop as the season moves along.

Unable to move against the enemy line, the Warhorses went to the air and scored a touchdown and completed 11 out of 24 tries for an extremely good showing in this department. The score came on a pass from Marvin Harper to Bobby Lowe, the play covering 15 yards.

Fumbles hurt the Warhorses in the early stages of the game and they fell two touchdowns behind early in the first quarter. In the second the Asheville High line broke through and tossed Owen backs for two safeties.

First downs Owen LEH  
Rushing yardage 6 11  
Passing yardage 21 276  
Passes 68 14  
Passes intercepted 0 6-1  
Fumbles 7-40-2 7-39  
Fumbles lost 3-3 2-1  
Yards penalized 67.5 85  
Score by Quarters:  
Lee Edwards 12 4 7 7-30  
Owen 0 4 0 0-6

**Warhorses Will Meet Bethel Friday Night**

Football fans of the SwannanoVA Valley will get their first look at the 1960 Owen High School Warhorses when the charges of Coach Howard Barnwell take on Bethel in a Blue Ridge conference game at Shuford Field Friday evening. Kickoff time has been set for 7:30.

Because of injuries suffered by key players in the Asheville High contest last week, the locals are not expected to be at full strength.

Bethel is always strong and last year played the Warhorses to a tie in the last few seconds of the game when a long run brought victory for the Owen High 11.

Although beaten 30-6 by a heavier, more experienced Lee Edwards team last week, the Warhorses showed flashes of power and fans expect them to develop as the season moves along.

Unable to move against the enemy line, the Warhorses went to the air and scored a touchdown and completed 11 out of 24 tries for an extremely good showing in this department. The score came on a pass from Marvin Harper to Bobby Lowe, the play covering 15 yards.

Fumbles hurt the Warhorses in the early stages of the game and they fell two touchdowns behind early in the first quarter. In the second the Asheville High line broke through and tossed Owen backs for two safeties.

First downs Owen LEH  
Rushing yardage 6 11  
Passing yardage 21 276  
Passes 68 14  
Passes intercepted 0 6-1  
Fumbles 7-40-2 7-39  
Fumbles lost 3-3 2-1  
Yards penalized 67.5 85  
Score by Quarters:  
Lee Edwards 12 4 7 7-30  
Owen 0 4 0 0-6

**Warhorses Will Meet Bethel Friday Night**

Football fans of the SwannanoVA Valley will get their first look at the 1960 Owen High School Warhorses when the charges of Coach Howard Barnwell take on Bethel in a Blue Ridge conference game at Shuford Field Friday evening. Kickoff time has been set for 7:30.

Because of injuries suffered by key players in the Asheville High contest last week, the locals are not expected to be at full strength.

Bethel is always strong and last year played the Warhorses to a tie in the last few seconds of the game when a long run brought victory for the Owen High 11.

Although beaten 30-6 by a heavier, more experienced Lee Edwards team last week, the Warhorses showed flashes of power and fans expect them to develop as the season moves along.

Unable to move against the enemy line, the Warhorses went to the air and scored a touchdown and completed 11 out of 24 tries for an extremely good showing in this department. The score came on a pass from Marvin Harper to Bobby Lowe, the play covering 15 yards.

Fumbles hurt the Warhorses in the early stages of the game and they fell two touchdowns behind early in the first quarter. In the second the Asheville High line broke through and tossed Owen backs for two safeties.

First downs Owen LEH  
Rushing yardage 6 11  
Passing yardage 21 276  
Passes 68 14  
Passes intercepted 0 6-1  
Fumbles 7-40-2 7-39  
Fumbles lost 3-3 2-1  
Yards penalized 67.5 85  
Score by Quarters:  
Lee Edwards 12 4 7 7-30  
Owen 0 4 0 0-6

**Warhorses Will Meet Bethel Friday Night**

Football fans of the SwannanoVA Valley will get their first look at the 1960 Owen High School Warhorses when the charges of Coach Howard Barnwell take on Bethel in a Blue Ridge conference game at Shuford Field Friday evening. Kickoff time has been set for 7:30.

Because of injuries suffered by key players in the Asheville High contest last week, the locals are not expected to be at full strength.

Bethel is always strong and last year played the Warhorses to a tie in the last few seconds of the game when a long run brought victory for the Owen High 11.

Although beaten 30-6 by a heavier, more experienced Lee Edwards team last week, the Warhorses showed flashes of power and fans expect them to develop as the season moves along.

Unable to move against the enemy line, the Warhorses went to the air and scored a touchdown and completed 11 out of 24 tries for an extremely good showing in this department. The score came on a pass from Marvin Harper to Bobby Lowe, the play covering 15 yards.

Fumbles hurt the Warhorses in the early stages of the game and they fell two touchdowns behind early in the first quarter. In the second the Asheville High line broke through and tossed Owen backs for two safeties.

First downs Owen LEH  
Rushing yardage 6 11  
Passing yardage 21 276  
Passes 68 14  
Passes intercepted 0 6-1  
Fumbles 7-40-2 7-39  
Fumbles lost 3-3 2-1  
Yards penalized 67.5 85  
Score by Quarters:  
Lee Edwards 12 4 7 7-30  
Owen 0 4 0 0-6

**Warhorses Will Meet Bethel Friday Night**

Football fans of the SwannanoVA Valley will get their first look at the 1960 Owen High School Warhorses when the charges of Coach Howard Barnwell take on Bethel in a Blue Ridge conference game at Shuford Field Friday evening. Kickoff time has been set for 7:30.

Because of injuries suffered by key players in the Asheville High contest last week, the locals are not expected to be at full strength.

Bethel is always strong and last year played the Warhorses to a tie in the last few seconds of the game when a long run brought victory for the Owen High 11.

Although beaten 30-6 by a heavier, more experienced Lee Edwards team last week, the Warhorses showed flashes of power and fans expect them to develop as the season moves along.

Unable to move against the enemy line, the Warhorses went to the air and scored a touchdown and completed 11 out of 24 tries for an extremely good showing in this department. The score came on a pass from Marvin Harper to Bobby Lowe, the play covering 15 yards.

Fumbles hurt the Warhorses in the early stages of the game and they fell two touchdowns behind early in the first quarter. In the second the Asheville High line broke through and tossed Owen backs for two safeties.

First downs Owen LEH  
Rushing yardage 6 11  
Passing yardage 21 276  
Passes 68 14  
Passes intercepted 0 6-1  
Fumbles 7-40-2 7-39  
Fumbles lost 3-3 2-1  
Yards penalized 67.5 85  
Score by Quarters:  
Lee Edwards 12 4 7 7-30  
Owen 0 4 0 0-6

### Public Invited To Open House For Radio Station WBMT Sunday

Sunday, Sept. 18 will be an unusually big day for the residents of the SwannanoVA Valley for this is the formal opening of new radio station WBMT which has been on the air for several weeks already. The public is invited to make a conducted tour of the various rooms, witness programs in progress, and meet the members of the staff and officers of the Mountain View Broadcasting Co., who are hosts and hostesses for the occasion. As guests are interviewed the conversation will be taped and played back over the air at a later time when it can be worked in between programs, thus giving all who made a recording an opportunity to hear themselves on the air.

Station WBMT is a member of the American Broadcasting Corporation; they carry all the regularly scheduled programs including the popular Don McNeil's "Breakfast Club" which has been on the air many years. Up to minute news casts are sent forth every hour and local news is featured several times during the day.

The new station is located just off Charlotte street on the former Blade property. It is composed of a tower 155 feet high, and a new building which has a transmitter room, control room, reception room, an office for the manager and studios A and B, which are so arranged that the announcer has a clear view of all programs through specially designed windows. The control room and studios are sound proof. The associated press teletype is situated in a special sound-proof room in the north east corner of the reception room. The building approximately is in the center of a five acre tract and has copper wire radials extending out from the tower 175 feet at regular intervals.

Gene Slatkin, station manager, suggests that all who visit the station on that date please park on the highway side of the creek as there is no bridge across at this time; plans for a bridge are underway for the future but meantime there is a foot bridge for use of pedestrians.

Visiting hours are from 1-5 this Sunday with many interesting events featured for the entertainment of the guests. Prizes will be given and refreshments will be served.

Officers of the Mountain View Broadcasting Company are: president, Gordon Greenwood; vice-president, Mrs. Eugene Slatkin; secretary, Mrs. —Turn to Page 4

**Evans Heads Lions White Cane Drive**

The Black Mountain Lions club will join the other 366 Lions clubs of North Carolina in sponsoring the annual White Cane Drive from Sept. 18-Oct. 2, according to Kenneth Evans.

The funds raised will be sent to the State Association for the Blind and will be used to assist blind or visually handicapped people of North Carolina.

The North Carolina State Association for the Blind is a non-profit organization. The officers and directors are Lions and receive no salary for their services.

Last year the association spent over \$60,000.00 in North Carolina for services which included: eye examinations, treatment, and surgery; research on the prevention of blindness; sponsoring visual aid clinics; furnishing white cane walking sticks for the blind; assisting the Eye Bank Program; and other services to blind people.

The Black Mountain Lions club last year sent \$300.00 to the association to help furnish these services.

The club goal this year is \$500.00 according to Mr. Evans.

The citizens of Black Mountain will be contacted by members of the local Lions club during the drive. "We hope that your contributions to this project will be generous," Mr. Evans said.

**Old Fort, Black Mountain Will Receive Funds**

Black Mountain will receive a total of \$6,573.85 and Old Fort \$3,506.67 in allocation of Powell Bill funds announced today by the State Highway Department in Raleigh.

They were among 409 participating municipalities in North Carolina.

The funds are distributed annually to qualified cities and towns for use in non-highway street work within their corporate limits. Checks will be mailed to Black Mountain and Old Fort town officials along with the others on Sept. 30.

Powell Bill funds represent one-half cent of the regular State gasoline tax and this year's total allocation represents a 3.6% increase over last year. Over the 10-year period in which the Powell Bill law has been in effect, a total of \$58,797,140.55 has been distributed. The number of participating municipalities is 414.

—Turn to Page 4

**Warhorses Will Meet Bethel Friday Night**

Football fans of the SwannanoVA Valley will get their first look at the 1960 Owen High School Warhorses when the charges of Coach Howard Barnwell take on Bethel in a Blue Ridge conference game at Shuford Field Friday evening. Kickoff time has been set for 7:30.

Because of injuries suffered by key players in the Asheville High contest last week, the locals are not expected to be at full strength.

Bethel is always strong and last year played the Warhorses to a tie in the last few seconds of the game when a long run brought victory for the Owen High 11.

Although beaten 30-6 by a heavier, more experienced Lee Edwards team last week, the Warhorses showed flashes of power and fans expect them to develop as the season moves along.

Unable to move against the enemy line, the Warhorses went to the air and scored a touchdown and completed 11 out of 24 tries for an extremely good showing in this department. The score came on a pass from Marvin Harper to Bobby Lowe, the play covering 15 yards.

Fumbles hurt the Warhorses in the early stages of the game and they fell two touchdowns behind early in the first quarter. In the second the Asheville High line broke through and tossed Owen backs for two safeties.

First downs Owen LEH  
Rushing yardage 6 11  
Passing yardage 21 276  
Passes 68 14  
Passes intercepted 0 6-1  
Fumbles 7-40-2 7-39  
Fumbles lost 3-3 2-1  
Yards penalized 67.5 85  
Score by Quarters:  
Lee Edwards 12 4 7 7-30  
Owen 0 4 0 0-6

**Warhorses Will Meet Bethel Friday Night**

Football fans of the SwannanoVA Valley will get their first look at the 1960 Owen High School Warhorses when the charges of Coach Howard Barnwell take on Bethel in a Blue Ridge conference game at Shuford Field Friday evening. Kickoff time has been set for 7:30.

Because of injuries suffered by key players in the Asheville High contest last week, the locals are not expected to be at full strength.

Bethel is always strong and last year played the Warhorses to a tie in the last few seconds of the game when a long run brought victory for the Owen High 11.

Although beaten 30-6 by a heavier, more experienced Lee Edwards team last week, the Warhorses showed flashes of power and fans expect them to develop as the season moves along.

Unable to move against the enemy line, the Warhorses went to the air and scored a touchdown and completed 11 out of 24 tries for an extremely good showing in this department. The score came on a pass from Marvin Harper to Bobby Lowe, the play covering 15 yards.

Fumbles hurt the Warhorses in the early stages of the game and they fell two touchdowns behind early in the first quarter. In the second the Asheville High line broke through and tossed Owen backs for two safeties.

First downs Owen LEH  
Rushing yardage 6 11  
Passing yardage 21 276  
Passes 68 14  
Passes intercepted 0 6-1  
Fumbles 7-40-2 7-39  
Fumbles lost 3-3 2-1  
Yards penalized 67.5 85  
Score by Quarters:  
Lee Edwards 12 4 7 7-30  
Owen 0 4 0 0-6

**Warhorses Will Meet Bethel Friday Night**

Football fans of the SwannanoVA Valley will get their first look at the 1960 Owen High School Warhorses when the charges of Coach Howard Barnwell take on Bethel in a Blue Ridge conference game at Shuford Field Friday evening. Kickoff time has been set for 7:30.

Because of injuries suffered by key players in the Asheville High contest last week, the locals are not expected to be at full strength.

Bethel is always strong and last year played the Warhorses to a tie in the last few seconds of the game when a long run brought victory for the Owen High 11.

Although beaten 30-6 by a heavier, more experienced Lee Edwards team last week, the Warhorses showed flashes of power and fans expect them to develop as the season moves along.

Unable to move against the enemy line, the Warhorses went to the air and scored a touchdown and completed 11 out of 24 tries for an extremely good showing in this department. The score came on a pass from Marvin Harper to Bobby Lowe, the play covering 15 yards.

Fumbles hurt the Warhorses in the early stages of the game and they fell two touchdowns behind early in the first quarter. In the second the Asheville High line broke through and tossed Owen backs for two safeties.

First downs Owen LEH  
Rushing yardage 6 11  
Passing yardage 21 276  
Passes 68 14  
Passes intercepted 0 6-1  
Fumbles 7-40-2 7-39  
Fumbles lost 3-3 2-1  
Yards penalized 67.5 85  
Score by Quarters:  
Lee Edwards 12 4 7 7-30  
Owen 0 4 0 0-6

**Warhorses Will Meet Bethel Friday Night**

Football fans of the SwannanoVA Valley will get their first look at the 1960 Owen High School Warhorses when the charges of Coach Howard Barnwell take on Bethel in a Blue Ridge conference game at Shuford Field Friday evening. Kickoff time has been set for 7:30.

Because of injuries suffered by key players in the Asheville High contest last week, the locals are not expected to be at full strength.

Bethel is always strong and last year played the Warhorses to a tie in the last few seconds of the game when a long run brought victory for the Owen High 11.

Although beaten 30-6 by a heavier, more experienced Lee Edwards team last week, the Warhorses showed flashes of power and fans expect them to develop as the season moves along.

Unable to move against the enemy line, the Warhorses went to the air and scored a touchdown and completed 11 out of 24 tries for an extremely good showing in this department. The score came on a pass from Marvin Harper to Bobby Lowe, the play covering 15 yards.

Fumbles hurt the Warhorses in the early stages of the game and they fell two touchdowns behind early in the first quarter. In the second the Asheville High line broke through and tossed Owen backs for two safeties.

First downs Owen LEH  
Rushing yardage 6 11  
Passing yardage 21 276  
Passes 68 14  
Passes intercepted 0 6-1  
Fumbles 7-40-2 7-39  
Fumbles lost 3-3 2-1  
Yards penalized 67.5 85  
Score by Quarters:  
Lee Edwards 12 4 7 7-30  
Owen 0 4 0 0-6

**Warhorses Will Meet Bethel Friday Night**

Football fans of the SwannanoVA Valley will get their first look at the 1960 Owen High School Warhorses when the charges of Coach Howard Barnwell take on Bethel in a Blue Ridge conference game at Shuford Field Friday evening. Kickoff time has been set for 7:30.

Because of injuries suffered by key players in the Asheville High contest last week, the locals are not expected to be at full strength.

Bethel is always strong and last year played the Warhorses to a tie in the last few seconds of the game when a long run brought victory for the Owen High 11.

Although beaten 30-6 by a heavier, more experienced Lee Edwards team last week, the Warhorses showed flashes of power and fans expect them to develop as the season moves along.

Unable to move against the enemy line, the Warhorses went to the air and scored a touchdown and completed 11 out of 24 tries for an extremely good showing in this department. The score came on a pass from Marvin Harper to Bobby Lowe, the play covering 15 yards.

Fumbles hurt the Warhorses in the early stages of the game and they fell two touchdowns behind early in the first quarter. In the second the Asheville High line broke through and tossed Owen backs for two safeties.

First downs Owen LEH  
Rushing yardage 6 11  
Passing yardage 21 276  
Passes 68 14  
Passes intercepted 0 6-1  
Fumbles 7-40-2 7-39  
Fumbles lost 3-3 2-1  
Yards penalized 67.5 85  
Score by Quarters:  
Lee Edwards 12 4 7 7-30  
Owen 0 4 0 0-6

**Warhorses Will Meet Bethel Friday Night**

Football fans of the SwannanoVA Valley will get their first look at the 1960 Owen High School Warhorses when the charges of Coach Howard Barnwell take on Bethel in a Blue Ridge conference game at Shuford Field Friday evening. Kickoff time has been set for 7:30.

Because of injuries suffered by key players in the Asheville High contest last week, the locals are not expected to be at full strength.

Bethel is always strong and last year played the Warhorses to a tie in the last few seconds of the game when a long run brought victory for the Owen High 11.

Although beaten 30-6 by a heavier, more experienced Lee Edwards team last week, the Warhorses showed flashes of power and fans expect them to develop as the season moves along.

Unable to move against the enemy line, the Warhorses went to the air and scored a touchdown and completed 11 out of 24 tries for an extremely good showing in this department. The score came on a pass from Marvin Harper to Bobby Lowe, the play covering 15 yards.

Fumbles hurt the Warhorses in the early stages of the game and they fell two touchdowns behind early in the first quarter. In the second the Asheville High line broke through and tossed Owen backs for two safeties.

First downs Owen LEH  
Rushing yardage 6 11  
Passing yardage 21 276  
Passes 68 14  
Passes intercepted 0 6-1  
Fumbles 7-40-2 7-39  
Fumbles lost 3-3 2-1  
Yards penalized 67.5 85  
Score by Quarters:  
Lee Edwards 12 4 7 7-30  
Owen 0 4 0 0-6

### Public Invited To Open House For Radio Station WBMT Sunday

### Evans Heads Lions White Cane Drive

The Black Mountain Lions club will join the other 366 Lions clubs of North Carolina in sponsoring the annual White Cane Drive from Sept. 18-Oct. 2, according to Kenneth Evans.

The funds raised will be sent to the State Association for the Blind and will be used to assist blind or visually handicapped people of North Carolina.

The North Carolina State Association for the Blind is a non-profit organization. The officers and directors are Lions and receive no salary for their services.

Last year the association spent over