

RIDGECREST RAMBLINGS

—MRS. TOM E. WALTERS—
Phone: NO 9-4641

This could be a dreary Monday morning, with the sky overcast, the leaves continually falling, the wind "wooshing" around the corners of the house; but I have never allowed myself the luxury of a blue Monday. The cloudy day just highlights the bright reds and yellows and browns of the trees; and there is a striking contrast with the green of the hemlocks, the ivy and the laurel. Tom always said that most people miss the color of the leaves. He called the small leaf of the ivy, the broader leaf the laurel and the rhododendron is the red and pink that grows on the higher mountains. Rhododendron is the stem of the word, rhodon in the Greek, meaning red—giving the color, red and varying shades of purple. It is an interesting thing to study these Anglo-Saxons in these hills. They have preserved the pure root meanings of so many of our words. Any of you who are linguists can verify this.

I returned late yesterday from a visit to Thomas, Patsy, little Ben and my namesake, Ginny Walters in Charlotte. I am such a fortunate person. On Wednesday of last week as I took my daily walk up the hill I saw the Watson's station wagon in his yard. He was there from Stedman with his mother, Mrs. E. C. Watson, Sr., from Garland, N. C., and his niece. They had come up to turn off the water and to enjoy the fall colors. They were going back home on Thursday thru Charlotte so I had a ride down with them and a wonderful time of fellowship hearing about the work of the churches in the New South River which is dear to my heart. Mr. Watson is the missionary and lives in the house that was built for us. It is good to know that all the trees, shrubs and bulbs we worked so hard over are being loved and taken care of. We planted from the sea coast to the mountains and never in our ministry did we move to a place that had been planted. We were grateful that we could leave behind us beauty in the hills and vales of our fields of service. The most difficult thing we had was getting trees set out and growing. By the time they would get some size we would be leaving for another field. We thought it was too wonderful when God set us down here on this mountainside in the midst of trees they have been a constant delight. We had to cut out many of them, but we

The church was beautifully decorated in greenery with tall white candles in stands on either side of the platform. High up on the wall just back of the platform was the theme in red and gold letters: Saved to Serve.



Miss Alice Turner was at the organ. The G. A. hymn, "We've a Story to Tell," was sung by the congregation. The Reviewing Council was recognized. The candles were lighted by Martha Allison and Sandra Wright. The men's chorus sang "The Church's One Foundation". Mrs. Neils Larsen examined the candidates. It was an impressive thing to see how much our girls do learn about the Bible and our denominational work as they make progress in their Forward Steps. There was one who had attained the rank of Maiden—Joy Burgin. Three were Ladies in Waiting, Judy Bradley, Linda Synpes and Janice Watson. The one Princess was Linda Allison. These were given their award of attainment and their charge by Mrs. Leslie Haynes, a former G.A. After these the queens came down the aisle with their attendants. The first was Linda Bradley, attended by her little sister, Patty Bradley as flower girl and Ronnie Turner as crown bearer. Glenda Lakey was the next queen attended by Karen Turner as flower girl and Henry Synpes as crown bearer. Next came Kathleen Phillips with her little sister, Martha, as her flower girl and her small brother, Robert Phillips as crown bearer. These queens were crowned and given their charges by Mrs. E. F. Hardin, their counselor for these many years. After these came lovely Barbara Bradley, Queen Regent to

Misses Ruby and Caroline Hall attended the Southeastern Convention of Librarians in Atlanta last week. Miss Ruby is the local librarian. The regular meeting of the Garden division of the Black Mountain Arts club was held Monday evening at Rangoon lodge, the home of Mr. and Mrs. W. M. Styles. In the absence of the chairman and vice-chairman the meeting was presided over by the secretary, Mrs. Styles. Plans were discussed as to how the division could help in the beautification of Black Mountain. Mr. and Mrs. Jack Gardner, Rt. 1, are parents of a son born Oct. 12 at the Biltmore hospital.

November 3, 1960
A. F. Tyson, Jr., has bought Leroy Sossamon's interest in Sossamon-Tyson Furniture Co., Inc. In the future the firm will be known as Tyson Furniture Company, Inc. Mr. Sossamon has a number of business interests in and around Bryson City which required all of his time and this fact prompted him to sell his interest to Mr. Tyson, the active manager of the firm.

United Nations day will be observed in Black Mountain on Tuesday, Oct. 24, with a morning service at Montreat college and an evening service at the First Baptist church in Black Mountain. United Nations day is a day on which Christian people the world over set aside as a special day for prayer for peace and good will among the people of the earth.

EXAMINATION OPEN FOR POSITIONS IN PANAMA CANAL ZONE

An examination is now open for positions in the Mechanical Trades and Skilled Occupations in the Panama Canal Zone, the Central Employment Office, Balboa Heights, Canal Zone announced today. Positions are under the Canal Zone Merit System, and employment is with the Panama Canal Company and the Armed Services on both the Atlantic and Pacific sides of the Zone.

No written test is required, but application must clearly show that the applicant has completed an apprenticeship or has sufficient work experience to qualify him as a journeyman in the particular trade for which application is made. Applicants must be able to read, write, speak, and understand the English language.

Full details concerning the requirements to be met and instructions for filing applications are given in Announcement No. CEO-99. For further information, write to the Central Employment Office, Drawer 2008, Balboa Heights, Canal Zone.



Social Security

The essential needs of most families require more income than can be had from Social Security. For instance, Social Security does not provide:

- AN EDUCATIONAL FUND FOR YOUR CHILDREN
- CANCELLATION OF THE MORTGAGE ON YOUR HOME
- A LARGE ENOUGH LUMP SUM FOR FINAL EXPENSES
- AN EMERGENCY FUND FOR YOUR FAMILY

Let me show you how your Social Security benefits can be combined with a JEFFERSON STANDARD INCOME PLAN to provide sufficient income for your family and an adequate retirement income for yourself.

T. W. NESBITT
Black Mountain NO 9-9555

Jefferson Standard
LIFE INSURANCE COMPANY

TO ALL WOMEN OF WESTERN NORTH CAROLINA
YOU ARE INVITED
to attend
A Coffee Hour Reception
in honor of
Eunice Kennedy Shriver
FRIDAY, NOVEMBER 4, 1960
Asheville City Auditorium
11 a.m. to 1:00 p.m.

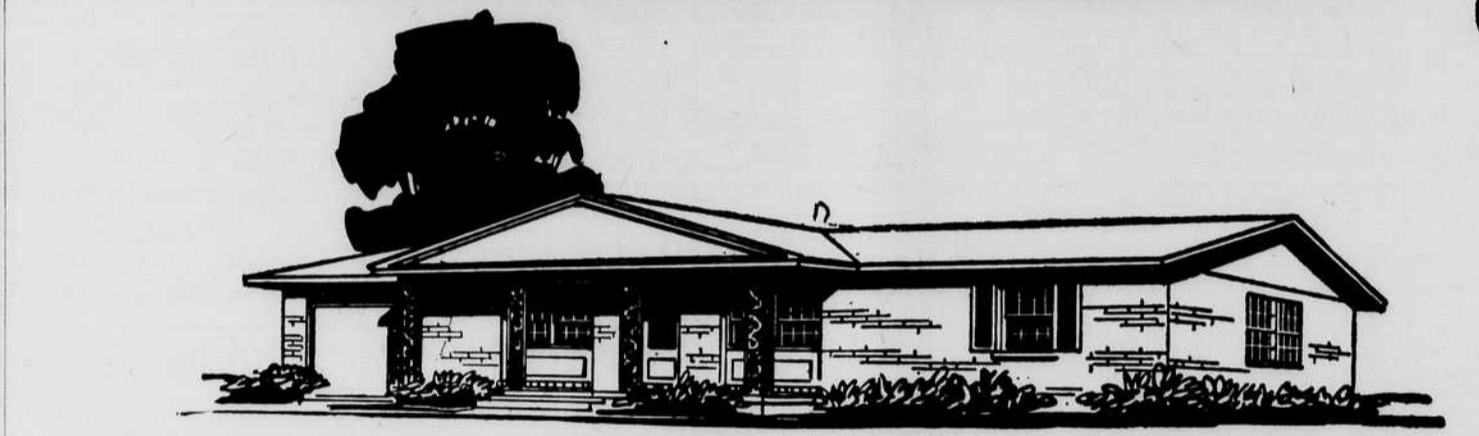
OPEN HOUSE

COMING SUNDAY, NOV. 6, 1960 - 2 to 5 p.m. - North Fork Road

Come and SEE for YOURSELF!
We'll Build Your Kingsberry Dream Home on your lot

NO MONEY DOWN!

FOR QUALIFIED LOTS and BUYERS! *



THE ECHOLS Gracious colonial facade with enclosed garage. Three excellent bedrooms, 1½ baths. Kitchen has huge walk-in storage pantry. Dining and family room adjoining kitchen has 8' sliding glass doors opening out onto outdoor living area. The Echols has an abundance of closet and storage space, too. Excellent traffic pattern serves living room traffic-free. Fine construction detailing.

WE OFFER a complete "Lock & Key" home building service including all financial arrangements.

YOUR KINGSBERRY HOME CAN BE BUILT OF BRICK — REDWOOD — CEDAR SHAKES — HARDWOOD & BATTENS — ALUMINUM — OR A COMBINATION OF BRICK AND OTHER SIDINGS.

Our Quality Kingsberry Construction includes:

- GLEAMING BATHS — Lifetime Copper plumbing, white or colored quality American Standard fixtures
- FINEST CRAFTSMANSHIP and quality material — Framed of thoroughly seasoned Southern Yellow Pine — Brand name materials like Flintkote, Masonite, DuPont, Weisler, used throughout
- DREAM KITCHEN — Quality factory built wood cabinets in wide range of finishes
- COMFORTABLE HEATING — Fine quality Rheem system gives evenly distributed comfort and economical operation. Mineral insulation improves heating, air conditioning (optional), cuts operating costs
- WIFE-SAVING BUILT-IN APPLIANCES — by Frigidaire — available for only a few dollars a month extra. (Optional)
- DURABLE CLEAR HARDWOOD FLOORS — By Bruce are prefinished, beautiful, wear resistant
- COLOR SELECTION — Plan your interior and exterior color scheme to suit you
- FUTURE PLANNED ELECTRICAL WIRING — All the electrical service you'll ever need, where you need it.
- WINDOW STYLE SELECTION — Choose from wood double hung or aluminum slider or awning types

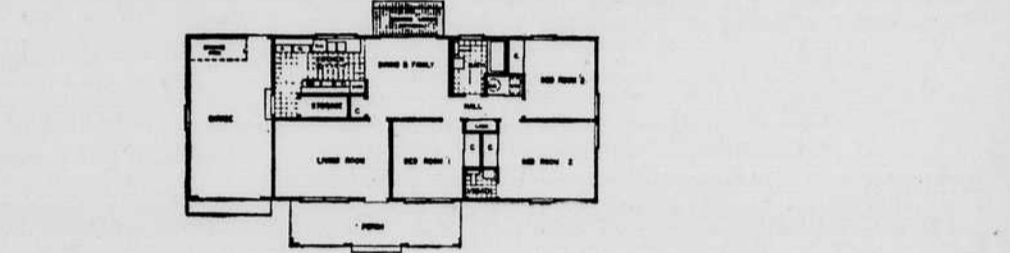
* Or we'll help you find the lot of your choice anywhere in (town).

Select Your Plan . . . We'll Do All The Rest — Fast!

KINGSBERRY HOMES
Designed for the Southland and Your Way of Life.



OVER 35 KINGSBERRY HOMES FOR YOUR SELECTION



ONLY \$10,800 \$76.00 Monthly

with 1½ lots

THE DESOTO is a compact 3 bedroom home with fine detailing usual in homes costing far more. Notice distinctive lattice work, attractive shutters, flower box, levered door. Separate dining area adjoins kitchen. Bedrooms all have big closets, spacious exterior storage room, double carport.
only \$11,500 \$79.00 Monthly

THE ROSALIND has an unusual open air garden court that graces the entrance to the 3 bedroom, 2 bath home. Extra large living room and one bedroom have modern slanting ceilings. Spacious dining area looks out onto garden court. "L" shaped kitchen has room for family meals. Separate laundry room, plenty of storage room and closets.
only \$10,800 \$76.00 Mo.

CALL OR WRITE US TODAY!
Valley Realty Co.
120 W. State St. NO 9-7111

Economical Extra Heat
By Tilley

1 GAL. KEROSENE LASTS 48 HOURS IN LARGE HEATER.
1 QT. LASTS 12 HOURS IN SMALLER MODEL.

These Portable Heaters are absolutely odorless and are ideal for extra heat in a chilly room or that "not too well heated spot" in cold weather.

MAY ALSO BE CONVERTED INTO LIGHTS!

Call: NO 9-8409 or NO 9-8400

Let us recommend your Contractor, Builder or Repair Man

BLACK MOUNTAIN Lumber Company
INCORPORATED 1908
LUMBER and BUILDERS' SUPPLIES
BLACK MOUNTAIN, N.C.