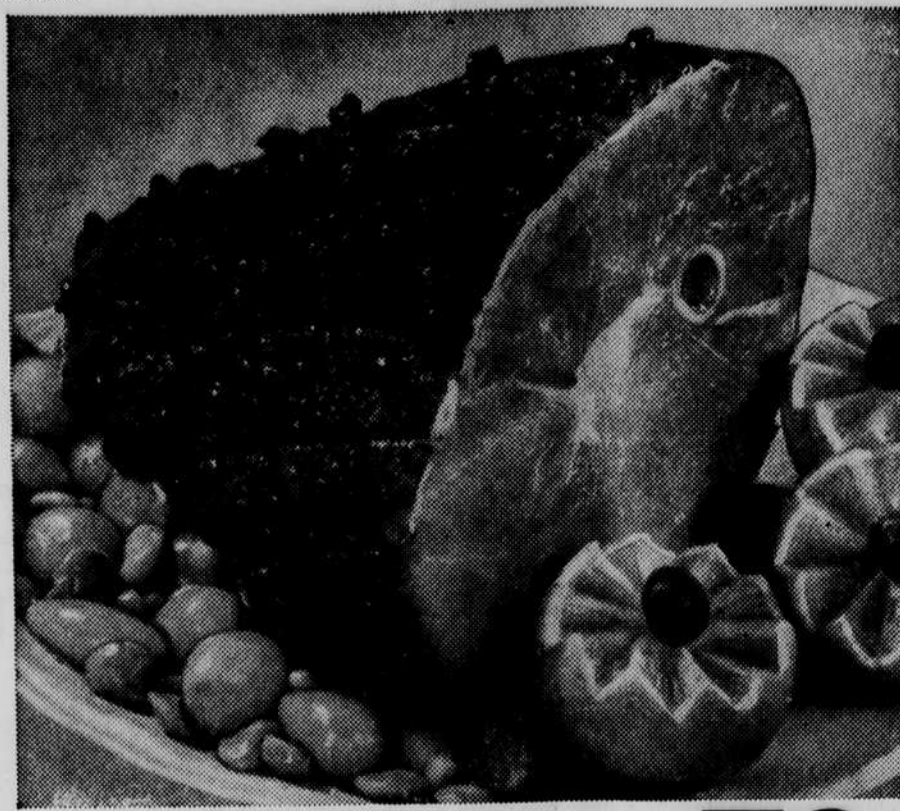


GET LOTS OF **eat** IN THE **meat**

We at A&P are very proud of our "Super-Right" Hams. Read on and see if you don't agree it's justifiable pride. First of all, these flavorful, pink-meated beauties are cut from tender, young, corn-fed porkers. The heavy wasteful porkers are just not "Super-Right" quality. Just as important is the way we process and sell our hams. For instance:

1. All shank and butt portions contain center meat—they're never trimmed down to the catch bone.
2. No half-hams (butt or shank) have any center slices removed.
3. "Super-Right" hams are sugar-cured and hickory-smoked.
4. Excess fat is removed from all of these hams.

So whether you pick a ham or beef roast, a steak or ground beef — you can buy with confidence. Either you agree it's completely satisfactory, including the eat in the meat — or you get your money back. Why not try us this week with a "Super-Right" sugar-cured, smoked ham? They're on sale you know — that means even greater savings!



HAM CENTER SLICES LB. 73^c

...WITH "SUPER-RIGHT"

12 TO 16 POUND AVERAGE SMOKED

HAMS

WHOLE



LB.

41^c

5 TO 8 LB. AVERAGE Ham Shank Half LB. 41^c 5 TO 8 LB. AVERAGE Ham Butt Half LB. 45^c
Ham Shank Portion LB. 31^c Butt Portion LB. 41^c

MEDIUM SIZE MEAT DINNERS
SHRIMP
LB. 69^c
BEEF, CHICKEN, TURKEY, MEAT LOAF, SALISBURY STEAK OR SPAGHETTI AND MEAT BALLS
Morton Frozen MEAT DINNERS
11-OZ. PKG. 39^c



"SUPER-RIGHT" QUALITY 10 TO 16-LB. AVERAGE
FRESH PORK LOINS

3 TO 8-Lb. LOIN RIB HALF LB. 39^c WHOLE LB. 39^c
3 TO 8-Lb. Avg. LOIN HALF LB. 43^c

ONE-FOURTH SLICED LOIN LB. 43^c
LOIN END PORK ROAST 2 1/2 TO 3 1/2-Lb. Avg. LB. 29^c

2 1/2 TO 3 1/2-LB. AVERAGE
PORK BACK BONES LB. 29^c

ALLGOOD BRAND
NO. ONE SMOKED FLAVORED

SLICED

1-LB. PKG.

39^c



PRICES IN THIS AD EFF. THRU SAT. MAY 30

A&P MEAT SANDWICH SPREAD 8-Oz. Cup 25^c

BACON

Colgate Baggies
SANDWICH 50 COUNT PACKAGE 29^c FOOD WRAP 25 COUNT PACKAGE 43^c
JUMBO SIZE 20 COUNT PACKAGE 59^c

COMET RICE

SHORT GRAIN 12-Oz. Pkg. 18^c 2-Lb. Pkg. 43^c LONG GRAIN 12-Oz. Pkg. 19^c 2-Lb. Pkg. 47^c

PUREX

SOAP PRODUCTS

Dutch All Purpose Cleanser 2 14-Oz. Pkgs. 31^c
Trend Dry Laundry Detergent 2 12 1/2-Oz. Pkgs. 39^c
Trend Liquid Detergent 2 12-Oz. Bott. 59^c
Wisley Assorted Soap 6 Bars in a Bag 35^c
Protex Soap 3 Bars in a Package 31^c
Sweetheart Soap 1 Reg. Bar 11^c 1 Bath Bar 15^c

15-CENTS OFF LABEL PLUS SPECIAL PRICE — YOU PAY ONLY
NESCAFE INSTANT COFFEE 10-Oz. Jar \$1.60

COLGATE

SOAP PRODUCTS

A-Jax Cleanser 2 14-Oz. Pkgs. 31^c 2 1-Lb. 5 47^c
Super Suds Detergent 40-Oz. Pkg. 57^c
A-Jax Liquid Cleaner 15-Oz. Bott. 39^c 1-Pt. 12-Oz. Bott. 69^c
Vel Liquid Detergent 1-Pt. & 6-Oz. Bott. 63^c
A-Jax Detergent 1-Lb. Pkg. 34^c Giant Package 81^c
Floriant Air Deodorant 7-Oz. Can 59^c
Fab Laundry Detergent 3-Lb. 1-Oz. Pkg. 81^c
Cold Water all Detergent Pint Bottle 43^c

FROZEN FOODS

MINUTE MAID CONCENTRATED LEMONADE 12-Oz. Can 25^c 6-Oz. Cans in a Ctn. 79^c A&P CONCENTRATED GRAPE JUICE 12-Oz. Can 35^c
FREEZER QUEEN CHEESE PIZZA 16-Oz. Pkg. 69^c Pepperoni 16-Oz. Pkg. 89^c

● CHOPPED OR WHOLE LEAF
A&P SPINACH 4 10-Oz. Pkgs. 45^c

● STOCK YOUR PANTRY
IONA SLICED PEACHES 2 1-Lb. 12-Oz. Cans 49^c

● WHITE HOUSE — GUARANTEED TO PLEASE
EVAPORATED MILK 6 13-FI.-Oz. Cans in A Ctn. 77^c

NORTHERN TOILET TISSUE 4 Rolls 35^c

MODESS NAPKINS 2 12-Ct. 89^c 48 Count \$1.73

ASSORTED, HEAVY DUTY COMB SETS 10-Ct. Pkg. 19^c

MAXWELL HOUSE GROUND COFFEE

GET 1-LB. COFFEE PACKED IN A GLASS PARTY PERCULATOR BOTH ONLY \$1.77

CUSTOM-GROUND—MILD & MELLOW
EIGHT O'CLOCK

Coffee Sale!

Save 4^c Save 14^c
1-LB. BAG 69^c 3-LB. BAG \$1.99



● RED RIPE, GUARANTEED TO PLEASE YOU

WATERMELONS

FOR SLAW OR SALAD GREEN CABBAGE 2 Lb. 13^c ● ZESTY AND JUICY — IDEAL FOR SUMMER BEVERAGES
FOR SALADS AND SLICING RIPE TOMATOES .. LB. 25^c **Lemons** 12 COUNT BAG 35^c

● OUTSTANDING LOW PRICE ON LARGE, FRESH

LETTUCE

2 HEADS 33^c



ANN PAGE TOMATO KETCHUP 3 14-Oz. Bott. 49^c
ANN PAGE FRESH MAYONNAISE 1-Qt. 45^c
ASSORTED DRINK MIX CHERRI-AID 6 Pkgs. 19^c
JANE PARKER APPLE PIES 1 1/2-Lb. Size 39^c
JANE PARKER SPANISH BAR 1-Lb. 29^c
JANE PARKER CRACKED WHEAT BREAD 2 1-Lb. Loaves 33^c
PACKER'S LABEL EVAPORATED APPLES 1-Lb. Package 43^c

● STOCK UP FOR THE COOK-OUT SEASON — CHARKETS

CHARCOAL BRIQUETS 10-Lb. Bag 49^c 20-Lb. Bag 89^c
● SPECIAL LOW PRICE ON ALUMINUM
WONDERFOIL WRAP 75 Ft. x 12 In Roll 65^c
● "SUPER-RIGHT" BRAND SPECIALLY PRICED
LUNCHEON MEAT 3 12-Oz. Cans \$1.00
● FANNING'S BRAND SPECIAL OFFER
BREAD & BUTTER PICKLES 2 15-Oz. Jars 45^c

LIPTON INSTANT TEA 1 1/2-Oz. Jar 49 ^c 3-Oz. Jar 89 ^c LIPTON TEA BAGS 48 Count 3 1/2-Oz. Package 69 ^c LIPTON PACKAGED TEA 1/2-Lb. Pkg 43 ^c JUNSHINE HI-HO CRACKERS 1-Lb. Pkg 43 ^c JEL-MONTE GREEN PEAS 1-Lb. 1-Oz. Can 33 ^c HEINZ HOT DUG RELISH 1 1/2-Oz. Jar 27 ^c	HEINZ HAMBURGER RELISH 1 1/2-Oz. Jar 27 ^c PILLSBURY BISCUITS 4 8-Oz. Pkgs. 37 ^c BALLARD BISCUITS 4 8-Oz. Pkgs. 37 ^c LIBBY GREEN PEAS 1-Lb. 1-Oz. Can 33 ^c GOLD SEAL AERO GLASS WAX 14-Oz. Can 35 ^c ROSY RED HAWAIIAN PUNCH 1-Qt. 14-Oz. Can 37 ^c	FLAVOR PACK CHASE AND SANBORN COFFEE 1-Lb. Can 89 ^c	ALL PURPOSE ACCENT 1-Oz. Size 29 4 1/2-Oz. Size \$1.05	MAZOLA MARGARINE 1-Lb. Pkg. in Qtz. 39 ^c
--	---	--	--	---