

Stafford
and
Fender
Motor Co. Inc.



MUD & SNOW TIRES

ALL CAR SIZES
Plus N.C. Sales Tax
\$2.00 Mounting and
Balancing
Recappable Tire

\$14⁹⁵

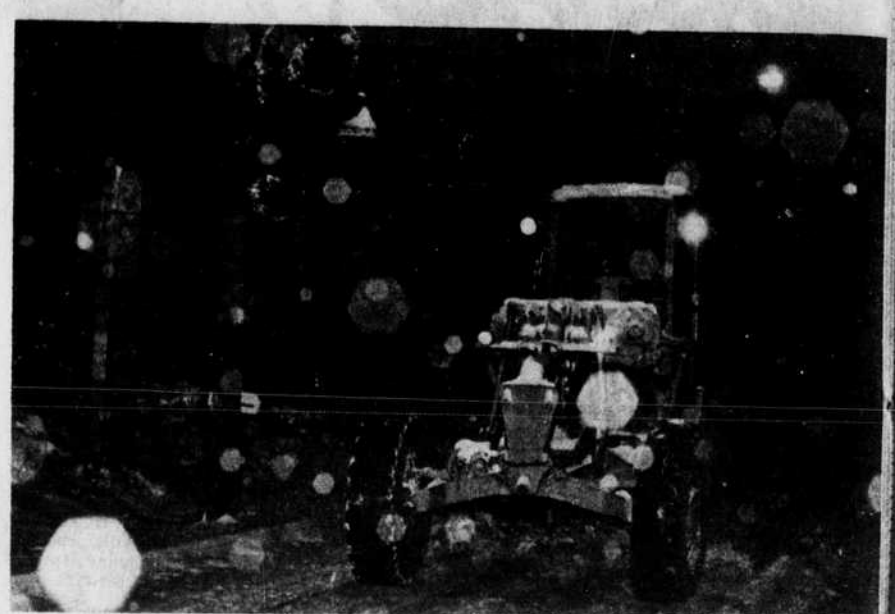
We Also Stock New Tires
For Cars And Trucks
Radials, Regular., Mud & Snow
Highway 70, Black Mountain
669-6464

Remember Christmas Winter Wonderland Of 1969??



Ridgecrest covered with white was the striking scene greeting travelers from the east as they entered the Valley.

It was a white Christmas in the Swannanoa Valley as the Weather made news here and around the country. Nine inches of snow fell in our area of the state transforming bleak winter into a beautiful winter wonderland. Snow began falling at mid-morning on Christmas Day. Slight accumulations remained from snow several days earlier but the new snow quickly covered everything. Temperatures in the twenties assured us all that melting would take several days.



Snow fell faster than the scraper could remove it - again note the light reflections on the falling snow.

On December 2 we ran what we thought was a picture of Coach Odie Blankenship and his M.V. Player John Hamilton. The gentleman in the picture was not Coach Blankenship but J.T. Carpenter. Coach Blankenship left, and John are shown in the picture above. Our apologies to Mr. Blankenship and Mr. Carpenter for our error.



OUR SPECIALTY
STEAKS PRIME WESTERN BEEF

- MOUNTAINEER
- FILLET MIGNON
- DEL MONACO
- T-BONE
- BEEF-KA-BOO
- N.Y. STRIP
- PRIME RIBS OF BEEF

OPEN 5 P.M. TO 1 A.M.
REASONABLE PRICES FROM \$2.25 UP.

MOUNTAINEER STEAK HOUSE
ACROSS FROM MOUNTAINEER INN
148 Tunnel Road Asheville, N.C. Dial 254-3322

Honorable Mention
All - Western Prep Football Team

Kerner Long quarterback-defensive back for the Owen High School Warhorses has added another leaf to his crown of laurels. he was named to the All Western Football Team. Receiving Honorable Mention were Randy Scott, back, David Ford, line backer and Brad LeVine, kicking specialist.

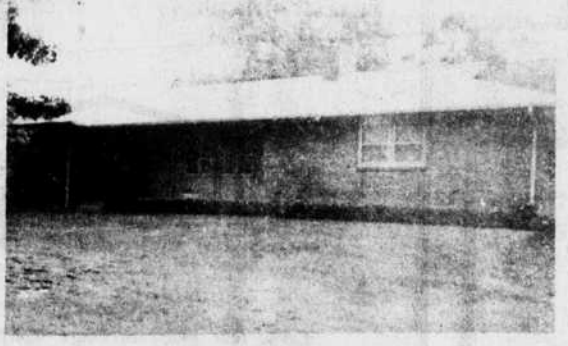


KERNER LONG DAVID FORD BRAD LEVINE

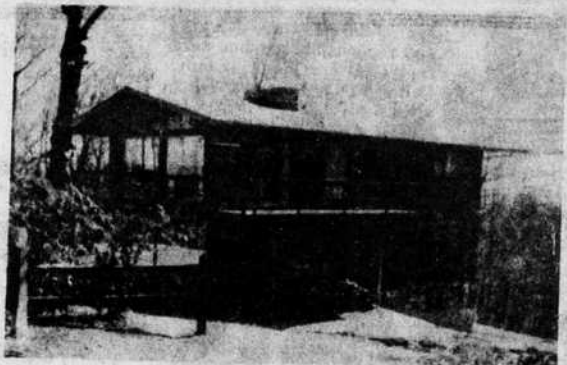
A light year is not a measurement of time but of distance. It is the distance a ray of light would travel in one year, about six trillion miles!



MONTREAT ROAD — Excellent older home with fenced rear yard. Walking distance to town. 2 or 3 bedroom, spacious living area. \$36,500



OUTSIDE CITY — Like new four bedroom, 2 1/2 bath home located on spacious lot. Extremely well planned and built. You must see to appreciate the many fine features of this exquisite home. Nearly 2 acres, all fenced. \$66,000



HIGH ROCK ACRES — Tremendous front and back views of the mountains...house has 3 BR's, 2 baths, large eat in kitchen, den, full basement, fireplace, secluded... \$44,100

- Rustic 3 bedroom, 2 bath home available on North Cotton Ave. Garage and family room space in basement, lovely decks for relaxation. Plenty of storage area. \$33,000.00
- Available now, 3 bedroom tri-level in Sourwood Ridge. Fireplace, 2 baths, eat in kitchen. Finished family room. \$37,900
- CHARMALDEE ACRES — Recently remodeled home has 3 bedrooms, 2 full baths, kitchen, dining room with beautiful fireplace in living room, and sun room for sitting. Partial basement for storage. Carport. Large lot is exquisitely landscaped. \$43,500.
- SUMMERHAVEN — This furnished home is an excellent summer retreat with a large lot and much privacy. \$17,000
- Two story building with upstairs apartment furnished, have your business on ground floor or lease to present occupant. \$250.00 month lease income both units. \$24,400.00
- North Park Lane — Two bedroom home in quiet neighborhood. Excellent for young couple or retirees. \$15,500.00
- Ridgecrest — Two homes. One four bedroom, four baths, fireplace in master bedroom easy access to I-40. One three bedroom summer cottage.
- Vacation home on two large lots. Very Private. 2 bedrooms, 2 baths, living room with stone fireplace. Completely furnished. Excellent condition. \$32,000.
- MONTREAT ROAD — Ideal business location for small business or office. Also, can be used for nice residence. 2 bedroom, living room, dining, one bath. Large lot with garden space. \$20,300
- Scenic view drive, 3 bedroom home in quiet neighborhood. Excellent buy, loan assumption available. \$16,500.

N. C. Contractors License 8092
Multiple Listing Service

- LAUREL LANE — This is one of our larger homes with four bedrooms, two baths, living room and sunken den, both have fireplaces, formal dining room and basement. Secluded lot. \$49,500.
- INVESTMENT PROPERTY — A store building for retail services or duplex apartments. Two bedroom home in rear of building for rental income. \$31,000
- ON DEAD END STREET — This beautiful all brick home features 3 bedrooms, formal dining room, living room, large kitchen and family room with fireplace. The full basement provides excellent work shop and recreation area. The large lot has excellent garden area. \$36,500
- BROAD RIVER — This two bedroom cabin is completely furnished. It is an excellent summer home with a beautiful view for only \$21,000

- MOUNTAIN CABIN — 2 bedrooms, furnished kitchen. Bordered by State road. Situated on 35 acres with trout stream and meadows. Secluded Owner Financing \$45,000
- OLD FORT — Nice remodeled cabin with 13 acres and stream ... 2 bedrooms \$26,000

RENTAL PROPERTY AVAILABLE — INQUIRE AT OFFICE
UNFURNISHED APARTMENT
Spacious view and grounds. 2 bedrooms, large living room, fully carpeted, kitchen appliances furnished, ample parking. Only minutes from I-40 to Black Mountain. Convenient shopping. Meadow View Apartments. Call 669-7111 or 669-6630.

- ACREAGE & LOTS
- McDOWELL COUNTY — Two tracts of land with suitable farm acreage. One has 67 acres, one has 41 acres. Contact office for details.
 - 3 Lots, Over 1/2 Acre each with beautiful view of the golf course, Craggies. Elevation 2,600 ft. \$6,000 each
 - CHARMALDEE ACRES — Lot near top gives excellent view of Swannanoa Valley. 3,000 ft. elevation. \$5,500
 - LOTS — Beautiful view of Mt. Mitchell from almost 1 acre - 5 minutes from town. \$7,500
 - One Acre Lot in Hickory Ridge Estates. \$5,500
 - Commercial Property at Swannanoa Interchange - contact office for details.
 - INVESTMENT PROPERTIES — 27 tracts of land from 1 acre to 1,200 acres - suitable for development or long-term investments. See us now for your choice of over 3,700 acres of mountain property.

East Buncombe's Largest Builder of National Homes



MORE FAMILIES LIVE IN NATIONAL HOMES THAN ANY OTHER HOMES IN THE NATION



JOE WILLIAMS
(Evenings: 669-6935)

TOM SOBOL
(Evenings: 669-6163)

BUD HANEY
(Evenings: 669-6991)

Proudly Serving W.N.C. For 27 Years
VALLEY REALTY & INSURANCE COMPANY, INC.

100 State Street
Black Mountain, N.C.
Office Phone 669-7111



Member of NAHB

