

Easy Terms

No need to pay cash for your Gulbransen. Just a few dollars down will put one in your home.

The prices in this ad are cash prices. But any Gulbransen can be purchased on our convenient payment plan. We will gladly give you the full details.

Don't deprive yourself of the pleasure of Gulbransen ownership when so few dollars down will bring the music of the entire world to you at once, to be personally played by you with your own expression.

Pedal Touch



You register your touch, through the pedals, when you play the Gulbransen, just as you would if you touched the keys with your fingers.

The Gulbransen will do, musically, things that you never believed possible with any musical instrument of its type.

Remember the Gulbransen is a Registering Piano, registering your exact touch and expression—it is not an ordinary player-piano.

Expect big things, musically, of the Gulbransen; it will not disappoint you. Gulbransen "pedal touch" gives you artistic piano music without a trace of the mechanical—it gives you the thrill of personally playing music with your own expression.

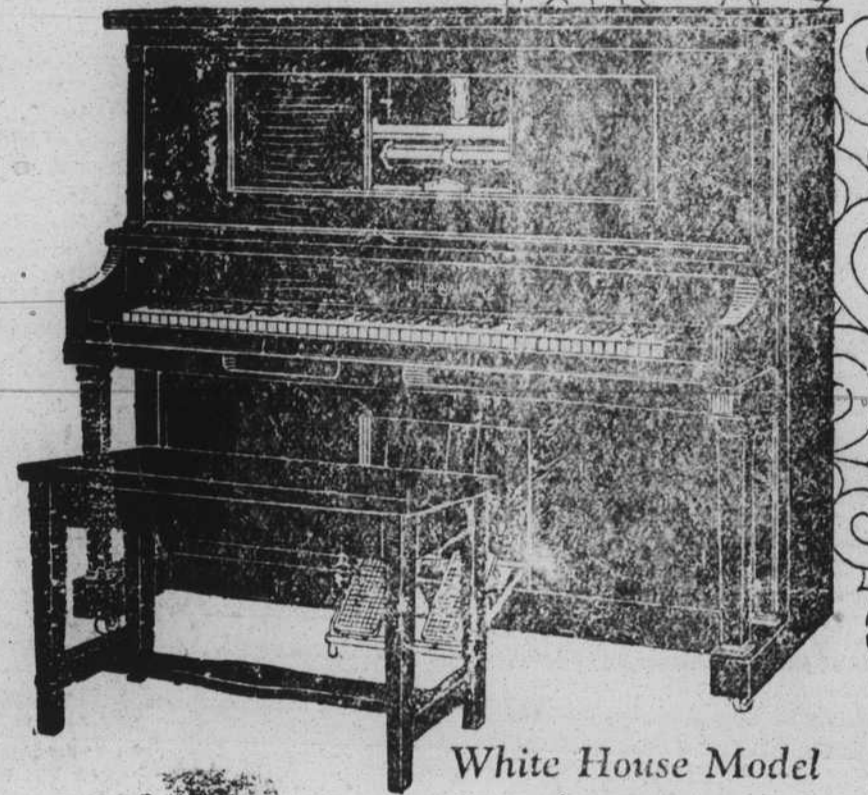


Without obligation you may send me your new 64-page de luxe book, "Good Times with Your Gulbransen."

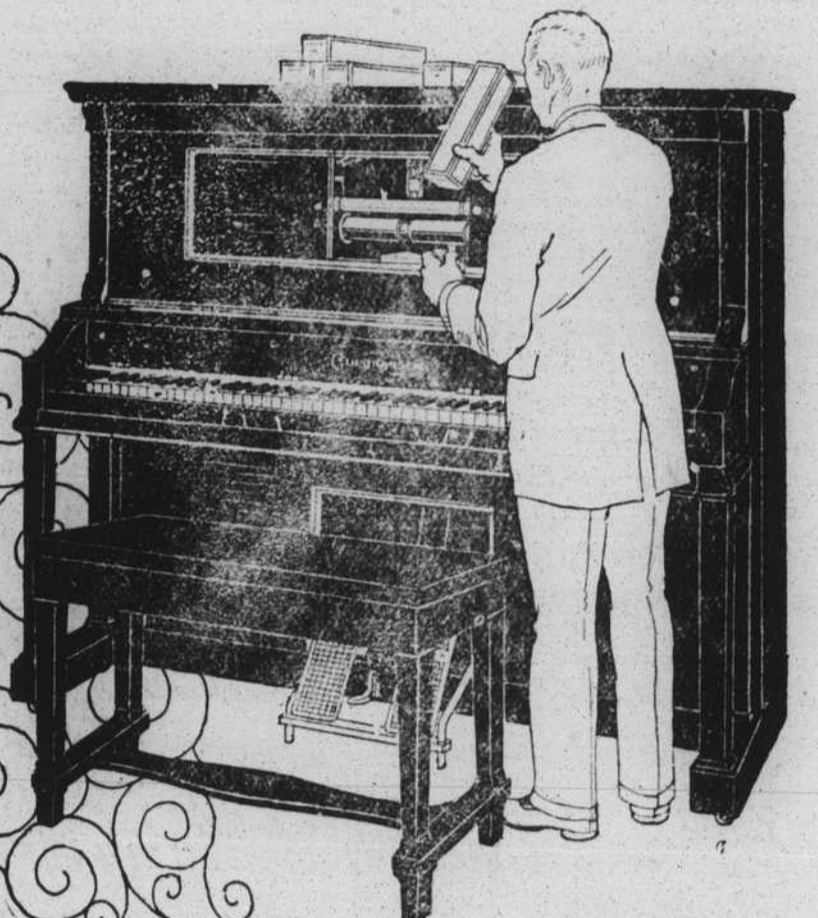
Your Name _____
 Street Address _____
 Town and State _____



Suburban Model
\$530



White House Model
\$700



Country Seat Model
\$615



Community Model
\$450

Electric Reproducing Models
\$770—\$855—\$940

This Week— Choose Between These 4 Beautiful Gulbransen Models

There's the splendid White House model—with a tone that captivates the musicians—an instrument worthy of its fine name—Gulbransen "White House" model.

Also the "Country Seat" model—sturdy and substantial; the "Community" model, economical and satisfactory.

And then the "Suburban" model—the popular favorite! It has been adjudged the *most for the money* obtainable in musical instruments.

You'll think so, too, when you see the Suburban. It's a winner—it will prove to be an investment in happiness for you and your family not for one, two, or three years—but for many years.

If it were not for the tremendous capacity of the Gulbransen factories—45,000 instruments a year—and the economical manufacturing that is the result—it would be necessary for us to get \$200 or \$300 more for the Suburban model.

The prices in this ad are the cash prices branded in the back. Ask for details of easy-payment plan

W. A. PENDLETON

EXCLUSIVE DISTRIBUTOR FOR CLEVELAND, GASTON, RUTHERFORD & LINCOLN COUNTIES, SHELBY, N. C.