

COUGHS

Every few hours swallow slowly a quarter of a teaspoonful of Vicks. Also melt a little in a spoon or a tin cup and inhale the vapors arising.

VICKS VAPORUB

Cover 17 Million Jars Used Yearly

UNDERWOOD TYPEWRITER
We are exclusive Agents for Cleveland and Rutherford County.
WILLIAMS & HAMRICK

Telephone Office:
585 New Fanning
Shelby Building.
DR. DAVID M. MORRISON
OPTOMETRIST
Eyes Examined, Glasses Fitted, Lenses Duplicated.
OFFICES:
Kings Mountain, N. C.
Forest City, N. C.
Rutherfordton, N. C.

NOTICE TO STOCKHOLDERS.
State of North Carolina,
County of Cleveland.
The stockholders of Beam Bros. Merc. company, a corporation created, organized and existing under and by virtue of the laws of the state of North Carolina, being located at Waco, N. C., will take notice that the Board of Directors of said corporation in a call meeting on September 23rd, 1924, unanimously passed a resolution for the dissolution of the aforesaid corporation; and all stockholders in the aforesaid corporation are hereby notified that a meeting of the stockholders will be held at Waco, N. C., in Beam Bros. Merc. Company's store, on Monday, Oct. 20th, 1924, at 4 o'clock, p. m., for the purpose of taking action on the resolution passed by said Board of Directors for the dissolution of said corporation, as provided by law.

This the 24th day of September, 1924.
BEAM BROTHERS MERC. CO.
J. R. Rhyme, Secy.
By J. B. Rhyme, President.

COMMISSIONER'S SALE.
By virtue of an order of Superior court, made entitled: "Bertha L. Beam Adm., et al vs. Delmas Beam, et al., in a Special Proceeding, I will sell to the highest bidder at the Court House door in Shelby, N. C., on

Saturday, October 25th, 1924 at 12 o'clock, M., or within legal hours the following described real estate, to-wit:

First Tract: Situated in No. 5 Township, Cleveland county, and described as follows: Being lot in town of Waco, and bounded as follows: Beginning at stone in East edge of street, northwest corner Baptist church lot, and runs thence with edge of street N. 20 W. 100 feet to stone, Cr. C. Benn's corner; thence with his line N. 67 E. 200 feet to stake, his corner in Huss street; thence with said street S. 20 E. 100 feet to stone, northeast corner of the church lot; thence with said lot 67 W. 200 feet to the beginning, containing 20,000 feet more or less.

Second Tract: Beginning at iron stake in old Goode and Mauney lines, at the cross roads, and running with said old line, N. 13 3/4 W. 47 1/2 poles to stake, Plato Warlick's corner; thence with Plato Warlick's line N. 46 1/2 W. 28 poles to stake, his corner; thence with old line N. 86 W. 40 poles to stone; thence a new line S. 17 3/4 W. 92 1/4 poles to stone in north edge of Shelby road; thence N. 61 E. 15.60 poles to a stone S. edge of road; thence N. 64 3/4 E. 29.20 poles to the beginning, containing 23 acres, more or less.

Third tract: Lots Nos. 5 and 6, a subdivision of M. C. Beam estate, as shown by plat recorded in Book No. 1 of plats, at page No. 4 and described as follows:

Lot No. 5: Beginning at stake in N. side of Railroad street, Southwest corner lot No. 4, and runs thence with line of lot No. 16; thence with said line S. 70 W. 30 feet to stake in said line, corner lot No. 6; thence with said line S. 20 E. 78 feet to stake, North side Railroad street; thence with Railroad street N. 70 E. 30 feet to the beginning.

Lot No. 6: Beginning at stake, North side of Railroad street, Southwest corner of lot No. 5 and runs thence with line of lot No. 5, N. 20 1/2 W. 78 feet to stake in line of lot No. 16; thence with said line and line of lot No. 10 S. 70 W. 30 feet to stake in line of lot No. 10; thence S. 20 1/2 E. with line of lot No. 7 78 feet to stake, North side of Railroad street; thence with said street North 70 East 30 feet to the beginning.

Fourth Tract: Lot No. 7: That lot of land situated in town of Waco, and known as lot "A" and bounded as follows: Beginning at stake in Mauney old line, near the widow F. M. Hoyle's old line; thence with Mauney old line S. 17 W. 24 1/2 poles to stake on W. edge of Main street, thence with W. edge of Main street 22 E. 24 1/2 poles to stake; thence S. 71 W. 3 1/2 poles to the beginning, containing one-fourth acre, more or less.

Terms of Sale: One-third cash on day of sale; one-third within 6 months and one-third within twelve months after date, title to be reserved until all the purchase money is paid. Deferred payments to bear 6 per cent interest from date.

This the 22nd day of September, 1924.

B. T. FALLS, Commissioner.

POULTRY

PREVENT SPREAD OF DISEASE OF CHICKS

The method of spread or transmission of white diarrhea is well known. That method is this: Chicks that survive the white diarrhea, contain the organisms in their bodies and a certain percentage of the eggs laid by that hen when grown are infected before hatching. The chicks come out of the shell with the disease and immediately show symptoms of white diarrhea and this spreads through their first four days of life to all the other chicks in the flock. During the first four days of life, if one chick comes out of the batch infected, others of that particular batch will become infected.

Prevention consists in hatching chicks from eggs free from infection. If your chicks get the disease, treatment is practically useless. Attention would be better given to prevention than to treatment. Kill all noticeably diseased. Remove all free from disease away from infected premises.

The only satisfactory method of determining whether a hen is infected is by means of blood test. Draw a small vial of blood from each hen that is to be bred from. The college is testing blood free of charge at the present time and will soon have a bulletin available explaining this method.

The proper time to test for white diarrhea is in the fall after culling. Test all hens you propose to keep over for breeding purposes. One test may not eliminate all disease. Test at least every year, or every six months, until you know they are free. Do not add to your flock any bird you do not know to be free from this disease.

All may soon be forced to test as people are going to stop buying indiscriminately from hatcheries or breeders whose eggs come from unknown, untested stock. They will buy from the hatchery that tests the hens that lay the eggs. The blood test is the only means at all satisfactory for the elimination of white diarrhea, as it eliminates the hen that lays the eggs that are infected.—Dr. H. E. Newsom, Pathologist, Colorado Experiment Station.

Convenient Nests Easy to Keep in Good Order

Good nests are easy to clean and easy to get at when collecting eggs. They are most convenient to reach when located under the dropping boards or on the side walls. Unless the dropping boards are at least four feet from the floor, the nests should not be under them.

There should be one nest for every four birds in the pen. A box 12 by 12 inches is the most suitable size for the average bird. A 1 by 4-inch piece placed about four inches in front of the nests will give the hen a place to step from into the nest. By lining this strip it can be used to close the nests against pullets in the fall and the broody hens in the spring.

The New Jersey experiment station ranks nesting materials in the following order: hay, shavings, sawdust and straw. To make cleaning easy, they suggest building nests in sections 12 by 12 by 16 inches, with a strip in front of 1 by 4-inch material to hold in the nest filler and a similar strip for the back of the nests. This sets on a platform the width of the nests and as long as the row of nests is to be. The nests are covered with a top of matched lumber which answers for the platform for the second tier of nests. When it is desired to clean the nests, they are simply pulled off the platform and all the nest material falls to the floor. These nests can be used either under the dropping boards or on the side walls.

Chicken Lice Destroyed by Dipping in Solution

Chicken lice can be easily destroyed by dipping the birds in a solution of sodium fluorid and water. Five ounces of sodium fluorid dissolved in a tub containing five gallons of water will be sufficient to treat 100 adult birds or twice that number of chickens ten to twelve weeks old. Every bird on the place should be drenched in this solution to entirely eliminate poultry lice for the next few months. Select a warm day and dip the birds early in the forenoon.

Meat in Growing Mash

Do not feed over 10 per cent meat in the growing mash, as a high protein ration will mature the pullet instead of developing growth. Thirty-five pounds of cornmeal, 25 pounds bran, 25 pounds middlings, 10 pounds meat scrap and 5 pounds bone meal is suggested. Milk may replace the meat, but do not leave out the bone meal, particularly in this case.

Remedy for Scaly Leg

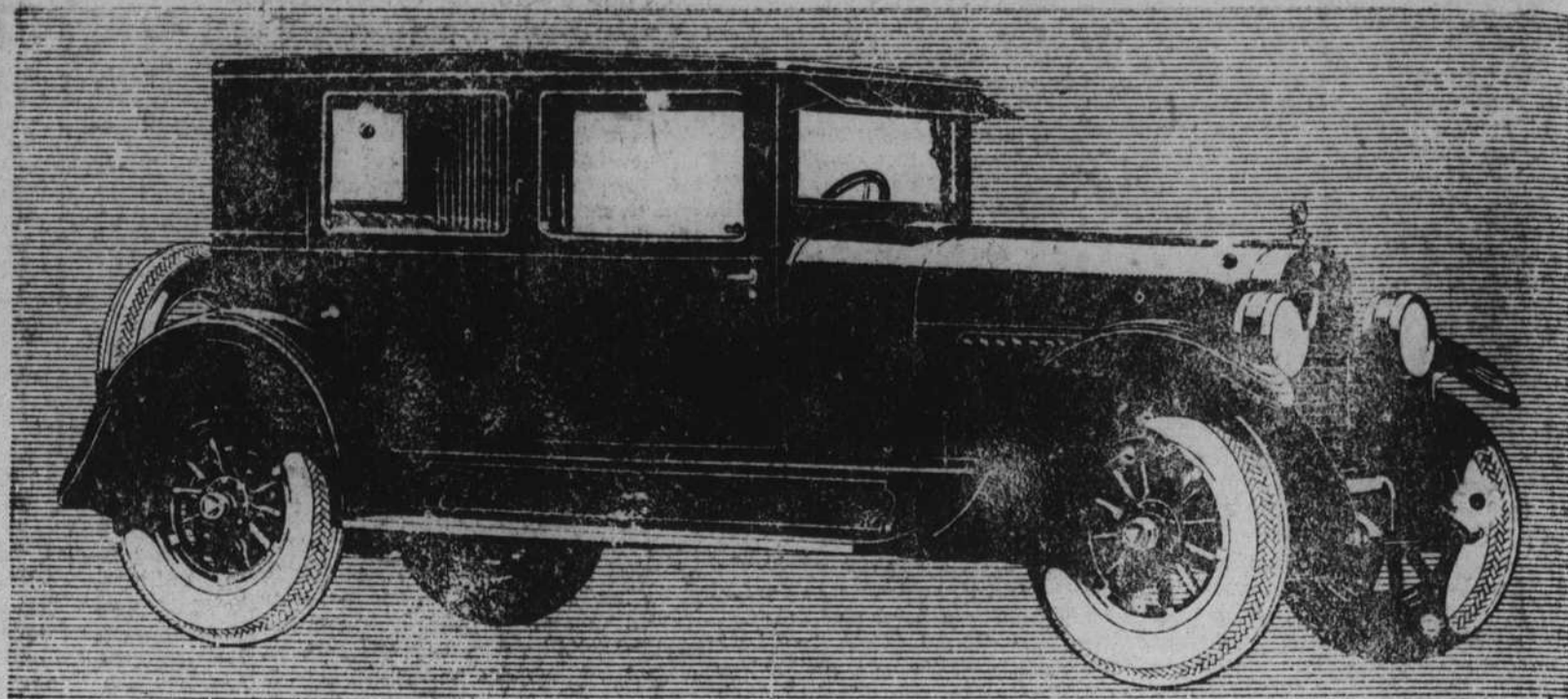
Scaly leg is a common summer disease among poultry. It is caused by a small parasite that burrows into the scales of the bird's leg causing them to protrude. One good way to cure it is to fill an empty fruit can with coal oil and keep the legs of the bird immersed in this for a few minutes. If this is done twice a week for a month it will usually kill the parasites, but it is well to supplement this treatment by using lard as an ointment for the legs.

Missionary Writes of War in China

Miss Attie Bostic Gives First Hand Information of the Revolution in Chinese Republic.

I hope our friends are no more excited about us in connection with this war than we are over the situation. It is a sad situation indeed! The two heads of the military forces in these two provinces have been near the point of fighting several times in the past two years, but both wear by all the powers that they are peaceful and do not want war! This is so like the devil's agents who bring on war in other parts of the world, Shanghai, the New York of China and one of the greatest of all the trading cities in all the east is in the province of Kiangsu geographically, but through some curious political movements in Yuan Shi Kai's time, has since then been under the control of the neighboring province of Chekiang, and as the war lords live and reign mostly for what they can get out of it for self, Chi, the military governor of Kiangsu has of course seriously coveted this very wealthy port. More than a year ago there were serious reports that war was about to break out in connection with the matter, but a patched up agreement was arrived at by which Lu Yung Shang the chief military man in Chekiang still held sway over Shanghai and the forts and the arsenal there, and it is now to get a final possession of this port and these forts and the great arsenal that Chi Shie Yuen of Nanking, began about two weeks ago to show signs of warlike preparations and report says his men made the first attack, though both men have persistently told the public that they would not attack each other, but would only defend in case they were attacked. That is the way, however, that war always begins is it not? Chekiang province has persistently and consistently refused to acknowledge Tsao Kun as president since he spent millions in buying the votes of parliament to put himself into that office, while it was publicly stated that Chi Hsie Yuen gave a round million to help him perpetrate that nefarious fraud. Chekiang calls itself an independent province, but sympathizes with both Sun Yat Sen in Canton and his opposition in Peking, and its so-called central government. Then in the far northern part of China, outside the great wall and bordering on Siberia, are three very rich, but not thickly settled provinces, known as Manchuria, and over which Chang Tso Lin rules and is entirely independent of Peking. It was he who had the conflict with Wu Pei Fu in the early summer of 1921, but who was soon repulsed in his effort to get to Peking with his forces. He is undoubtedly one of the most influential and feared military men in China with immense resources. His sympathies and efforts are now with the Chekiang Duchue, Lu Yung Shang and I heard on the streets today that he has some ship loads of troops already on their way by sea to help Lu, and I also read in the paper today that he has 30,000 men at each of six different points ready to attack the metropolitan province and again strive for the mastery over Peking. He declared last week that his purpose was to kill Tsao Kun and Wu Pei Fu and bring peace to the country. Tsao Kun is the mock president, who is in the position only because he spent millions to bribe the legislature, and Wu Pei Fu, who is in many ways the equal and in some ways perhaps the superior of Chang Tso Lin, the Manchurian warlord, is located in Honan province some 400 miles south of Peking and some 600 miles from Shanghai, and he was one of the military men who stood by and protected Tsao Kun in buying his present seat, as was also Fung Yu Hsiang, the famous Christian general, who lost much of the respect he had so justly won, because of his mix-up in this bribery business. Wu Pei Fu has easy railway connection with Nan King, Chi Hsie Yuen's seat of government and he has been sending down large forces to help Chi. Report also says that Sun Yat Sen is doing all in his power to help Lung and to overthrow the Peking false government. Peking has no money and finds it difficult to borrow. It is altogether impossible to tell how the matter will terminate, but many of us who have lived in the midst of war and rumors of wars and bandits, soldiers in uniform and under some government one month and the next racing over the country as bandits, will be glad to see a fight to a finish. So far the reports that have come out of the fighting seem mostly to favor Lu's side.

A recent most interesting item about Chung Tso Lin is that he has secured the services of an expert Japanese girl flyer and that he has some fine air service preparations. We are well and at peace with all men!



At Exactly Open Car Cost

You pay exactly open car cost for the all-year comforts of the Coach. Hudson alone can build it. As the largest builder of 6-cylinder closed cars in the world, Hudson exclusively holds the advantages to produce this car and this price.

It creates the one important buying issue today. For no one who knows closed car comforts will be satisfied with an open car, with one-season utility, and diminishing resale value.

That is why the Coach outsells all rivals. Its leadership is not even challenged. Everyone knows it provides highest closed car value. Hudson invented the Coach and its development and experience make its value exclusive.

And even more important in your permanent enjoyment of the Coach, is the famous Super-Six chassis with performance distinction and long lasting reliability not excelled by any car regardless of cost.

Balloon Tires Standard • Equipment •

HUDSON

Super-Six

COACH

\$1500

Freight and Tax Extra

HOEY MOTOR COMPANY

SOUTHERN RAILWAY SYSTEM

Spending Southern Railway Money for the Greatest Public Service

A manufacturer's first question, when planning the location of a factory, is "What are the railway facilities?" Business men who are investing capital in new industries in North Carolina know that a location on the lines of the Southern Railway is an assurance of prompt deliveries of fuel and materials to the factory, and of finished goods to inland markets and ocean shipping ports.

North Carolina's prosperity depends on adequate transportation. Good railway service is a magnet that draws industry to a state, just as poor service throttles business and discourages new enterprises. The character of Southern Railway service in North Carolina is notably contributing to the prosperity of the State.

The high standards of service on the Southern could not be maintained without continued heavy expenditures for new facilities to handle promptly and efficiently the traffic offered our lines. In the past twenty years our outlays for additions and betterments in the State of North Carolina have amounted to more than \$40,000,000. These capital expenditures have been in addition to our day-to-day

operating expenses and taxes in North Carolina, which annually amount to millions of dollars. In 1923 they totalled \$26,000,000.

Most of the new capital expended on our North Carolina lines in these two decades has been devoted to improvements which enable us to move traffic promptly and thus attract new industries to the State and so contribute to North Carolina's increasing prosperity.

Nevertheless we respond as generously as practicable to the wishes of our fellow citizens of North Carolina for improvements which, while desirable, do not increase the capacity of the railroad as a transportation facility. In the last ten years we have eliminated fifty-four grade crossings and have provided forty-four new or improved station buildings in the State.

With the cooperation of the people of North Carolina we hope to be able to continue our policy of making our major outlays for additions and betterments that will increase our capacity to do our day's work.



CRYSTAL BATH
The Most Delightful Invigorating ALCOHOL MASSAGE
At All Good Druggists.

The Real Attraction.
Washington Star.
Jud Tunkins says the plain tiller of the soil has got to face the sad fact that the pigs an' punkins at a county fair never get as much serious attention as the harness races.

The SOUTHERN SERVES THE SOUTH