

FANNING'S

FANNING'S

Striving to make November the Banner Month in the History of Our Business. We have bought in large Quantities, thereby secured many excellent values which are being offered at very attractive prices, representing the markets most dependable merchandise in all lines.

READ OUR ADS. VISIT US OFTEN. WE ARE GLAD TO SHOW YOU.



MEN'S DEPARTMENT

Clothing, Shoes, Hats, Furnishings

In complete assortments. Particular men will take pleasure in selecting needs from these fresh stocks of dependable goods. Prices are exceptional for such qualities as these.

MEN'S SUITS AND OVERCOATS \$19.50

A large variety of both. All wool serge suits — tan and grey mixed. In models for all. Overcoats are plain and belted. You'll have to see them to appreciate their value.

A Guarantee of Satisfaction In **MEN'S SUITS**

It doesn't matter how little or how much you pay for your suit here. We positively guarantee every suit to fit perfectly and to wear well. You will find at all times a large assortment at popular prices:
\$25, \$30, \$35, \$40

MEN'S GENUINE VELOUR HATS PRICED \$5.00

In Colors of Tan, Brown and Grey

FLORSHEIM SHOES \$10

COATS, DRESSES AND MILLINERY

Styles are varied and in immediate vogue. The Fabrics and shades cover all that is new and smart.

COATS \$24.50

At this popular price we are showing a broad range of materials and colors. Representing excellent values. Sizes 16 to 44.

FLANNEL DRESSES \$9.75

Well tailored. In green, copen, tan, brown, Navy, 16 to 44.

WOOL DRESSES \$24.50

Charmeen, Poiret Twill, Striped and Plaid Flannels. Navy, Tan and Brown, 16 to 44.

CHILDREN'S COATS \$8.95

8 to 14. Self and Fur Trimmed. Brown, Tan, Green and Navy.



HATS OF SMARTNESS AND ORIGINALITY



These are the hats which established the mode in millinery. High crowns, narrow brims, bird and feather trimming will quickly impress you as the dominant note. The entire group evidences an understanding of "topping" the Fall mode, which is of especial interest now that women are selecting their Fall wardrobe.

\$4.00, \$5.00, \$6.00, \$7.00, \$8 AND UP

PIECE GOODS DEPARTMENT

WOOL FLANNELS

Copen, Tan, Rust, Navy, Henna **\$1.95**

36 Inch

ALL WOOL CREPE \$1.25

Red, Navy, Black, Brown, and Tan.

SILK AND WOOL CREPE \$1.95

Tan, Copen, Navy, Black, Green.

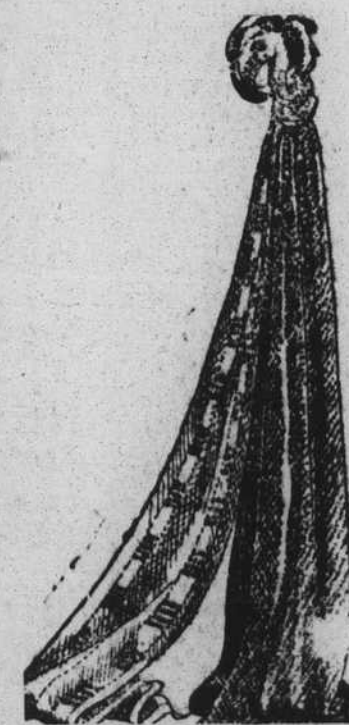
NOVELTY CHECKS - 89c Green and Tan, Brown and White, Black and White.

EXCELLENT QUALITY SATIN \$1.95

Heavy and Durable. Black, Navy, Brown, Turquoise, Rose, Pink, White, Green, Tan.

36 Inch Wool Crepe

Excellent Quality, medium weight **\$1.95** Tan, Rose, Rust, Grey, Black, Brown, Pekin, Navy



DEPENDABLE MERCHANDISE FROM THE BASEMENT FLOOR

Men's All Wool Army Shirts **\$1.95**
Assorted Colors

Men's 25c Socks **19c**
A splendid quality list in Brown, Navy, Black.

Children's Solid Leather Shoes **98c**
5 to 8. Button and Lace.

Men's Shoes **\$2.95**
Heavy brown Calf, Rubber heels., all solid leather 6 to 11.

19c Table Short Lengths Chambray, Red Seal Ze-phyrs. Soisettes, Pajama checks.

36 Inch Heavy Outings **25c**
36 inch Novelty checks 39c. Heavy Shirting 20c.

Boy's Two Trouser Suits, wool mixed **\$4.95**
Tan and Grey, 6 to 17.

Children's Rain Capes **\$1.48**
Guaranteed rain proof. sizes 6 to 14.

Women's Solid Leather Shoes **\$1.95**
Old Ladies Bal and Cap-ped toe.

Men's Army Shoes **\$3.95**
All leather. Plain toe rubber heels.

Black Sateen, 29c Yard Special quality for bloom-ers. Short lengths, 50c grade.

Pink and Blue Crib Blankets **59c**
English Army Blankets \$4.95.

Boy's Hats and Caps A large stock. Varied shapes, sizes, etc. **50c, 95c, \$1.48, \$1.95**

Children's E-Z Union Suits **95c**
Knee and Ankle Lengths

Children's Union Suits **48c and 75c**
Eeru only. Well Made, Full Cut, all Sizes.

Men's Shoes **\$3.50**
Buff, Elk Blutch. Army last. Paracord soles. 6 to 11

CHILDREN'S SWEATERS
98c \$1.48 \$1.95 \$2.95
Pull Over and Coat Styles. Plain and Combination colors.

W. L. Fanning & Company