

A Page For Those Interested In Automobiles

Skiddin' About Shelby

If you have an automobile or a flivver you will eventually be interested in the auto page, which will be run in each Tuesday's issue of The Star hereafter. It is the purpose to carry nothing on the page but what will be of interest to automobile owners or motorists—even the advertisements are that. Read the entire page. When you have anything to sell use the advertising space on the Auto Page.

Something new in cleaning a car will soon be installed at the Ideal Service station according to Reid Mischheimer manager. The new apparatus is known as the Steam Cleaning system and is for the purpose of cleaning the engine and chassis of the car. The body of the car will be washed the same way as heretofore only the job will be more complete the new way.

You may lose time by waiting at the corner till the traffic cop says go, but you will not have to serve "time."

The latest believer in the new Essex is Miss Ethel Bookout, who has purchased an Essex coach from the Hoey Motor company.

Arey Brothers have a hunch that Texaco oil and Chevrolets lead the way, but there's one hunch they don't play. In the salesroom of the Chevrolet they dangles the following sign: "The Party who Lonna Tools is OUT."

Perhaps you think you're an expert on cross-word puzzles. Let's see what you can do with the Chevrolet brain teaser?

New Sport Model Buick.
L. Lackey, Buick dealer, says the Buick factory is now showing a new sport model which has just been added to the Buick line. It is finished in gray duco and retails for \$1630. Mr. Lackey says the factory is far behind with closed car models but he sold one last week for delivery within ten days. He is now showing standard six and lighter six open cars on his show room floor on N. Morgan street. Eighty per cent of the cars are now built with four wheel brakes, an innovation started some time ago by the Buick factory.

Unloads Car of Dodges.
C. P. Peeler of the Cleveland Motor company, will unload today a carload of Dodge cars, consisting of coupes, sedans, coaches and touring. The Dodge has just added a four passenger coach to its line and the car arrives this week to be the first of its kind shown in Shelby. In the new Dodge quarters in the Gardner building Mr. Peeler is enjoying a splendid trade. Last week he delivered a Dodge roadster to J. W. Smith, contractor in charge of building the new jail.

Has Oldsmobile Line.
Hawkins Brothers who recently accepted the Oldsmobile agency here are

gratified with results of the four months they have handled the Olds. They delivered last week a sport model to Irvin Spake and are showing a number of their leading models with prospects for a good season. Hawkins Brothers carry a full line of Miller tires and Globe batteries which they are pushing at this season.

Hall Tillman at the Carolina Motor Inn doesn't believe much in charging things, but he sure is strong for charging batteries. He operates the Willard service station.

Once a Studebaker owner always a Studebaker owner, says Doggett Brothers, Shelby agents of the Studebaker. Mr. J. D. S. Carpenter of Lawn dele. has just purchased his second Studebaker—a standard six duplex model. Mr. E. E. Campbell, head of the Campbell department stores, is another new Studebaker owner, having a Standard six coupe.

Uncle Sam is to erect a barbed wire fence at El Paso to keep out the rum-runners. If they ever spill any of the stuff on the fence, good-bye fence.—Los Angeles Express.

BARGAIN BUYS Slightly Used Late Model Cars.

- 1924 Light Six Studebaker.
- 1924 Chevrolet Sedan.
- 1924 Dodge Touring.
- 1924 Hupp Touring—Sport Model.
- 1924 Ford Touring.
- One-Ton Ford Truck.

We always keep the best bargains on the Used Car Market. Come around and look them over. Get our prices. You'll buy.

DOGGETT BROS. STUDEBAKER AGENTS

HOOD CORDS The Tire For You

When you want a new battery or battery service—Willard is the Best always.

Carolina Motor Inn HALL TILLMAN, Prop.

GOOD SECOND HAND BARGAINS

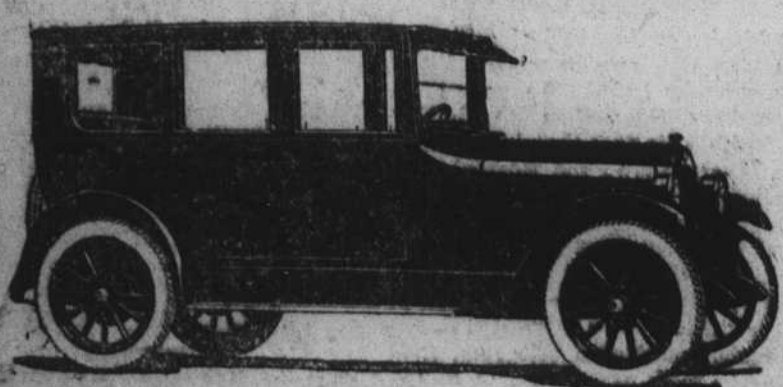
- One 1923 model Ford touring, newly painted.
- One 1924 models Dodge touring.
- One 1922 model Dodge touring.

Complete line of Fisk Tires and Tubes. We wash, grease and paint cars as well as do all kind of repair work.

Try our service on Standard Gasoline and Oil.

CLEVELAND MOTOR COMPANY C. P. PEELER, Manager.

OLDSMOBILE SEDAN PRICE \$1,250 f. o. b. FACTORY



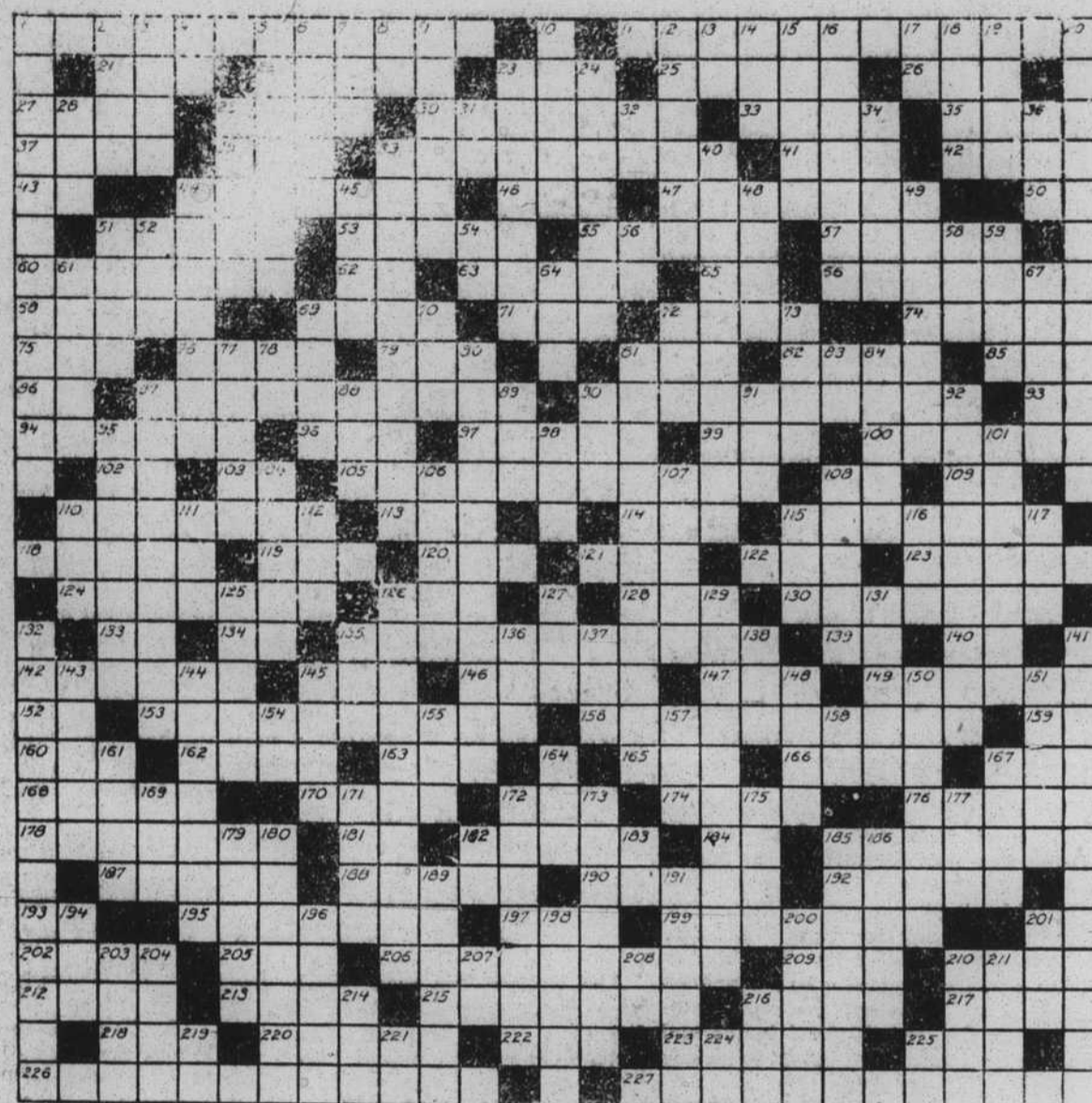
Fisher body and an ideal five passenger family car. Four large doors. Six cylinder motor. Inside is trimmed in tastily striped velour,—individually tailored to each body; hardware of rich design, all heavily nickled, every detail is provided even to automatic windshield cleaner, rear vision mirror and specially designed visor.

You should see the Oldsmobile to appreciate it.

HAWKINS BROTHERS GLOBE BATTERIES. MILLER TIRES.

Cash Prize Puzzle

- MOTOR**
1. Powerful valve-in-head motor
 2. Oil pump for efficient lubrication
 3. Oil level indicator
 4. Fully enclosed valves and rocker arms
 5. Step-cut piston rings
 6. Compensating carburetor
 7. Hot air stove in connection with carburetor intake
 8. Valve adjustment at top of push rods
 9. Fully enclosed dry, plate disc clutch and flywheel
- COOLING**
10. Ventilation louvers in hood
 11. Centrifugal water pump
 12. Harrison honeycomb radiator
 13. Non-rusting airplane metal radiator shell
 14. "V" fan belt
- IGNITION**
15. Distributor ignition
 16. Remy electric starter
 17. Remy generator
 18. Panel type ammeter and oil gauge on instrument board
 19. Storage battery
 20. Drum type legal headlamps
 21. Headlamp dimmers
 22. Dash lamp
 23. Tall light on battery circuit
 24. Klaxon electric horn
- TRANSMISSION**
25. 3-speed selective sliding gear transmission
 26. Hand gear-shift lever
 27. Standard clutch and brake pedals
 28. Foot accelerator and accelerator foot rest
- UNIVERSAL JOINT**
29. All-metal universal joint—yokes doubly heat-treated—Almatic lubrication
- REAR AXLE**
30. Improved large-surface spiral-bevel ring gear and piston
 31. New Departure ball bearing on piston hub
 32. New Departure thrust bearing
 33. One-piece pressed steel banjo-type housing
 34. Live rear axle shafts mounted on New Departure ball bearings
- BRAKES**
35. 11-inch brake drums
 36. Extra-heavy brake bands easily adjustable
 37. Positive brake linkage
 38. Individual brake adjustment
 39. Automatic brake equalizer
 40. Efficient hand brake



- CHASSIS**
41. Deep 4 1/2-inch frame
 42. Five frame cross members
 43. Extra-heavy drop-forged front axle
 44. Ample clearance below front axle
 45. Positive and improved semi-reversible steering mechanism
 46. Large steering spindle bolt
 47. Fore and aft steering control
 48. Spring cushioned steering connecting rod
 49. New Departure ball bearings in front wheels
 50. Artillery type wheels—disc wheels on Sedan and Coupe
 51. Semi-elliptic springs
 52. Rear springs underlung
 53. Vacuum fuel feed
 54. Gasoline tank located at rear
 55. Almatic lubricating system
- BODIES**
56. Refined full streamlines
 57. Low comfortable seats
 58. Crowned panel fenders
 59. Covered running boards
 60. Positive door catches
 61. Anti-rattle hood catches
- EQUIPMENT**
62. Demountable rims
 63. Extra rim
 64. Tire carrier
 65. Speedometer
 66. New cowl lamps
 67. New design instrument board designed for maximum leg room
- OPEN MODELS**
68. Double adjustable windshield with rubber weatherstrip
 69. Side curtains open with doors
 70. Duco finish in rich dark blue
 71. Large glass window in rear curtain
 72. Burco curtain fasteners
- CLOSED MODELS**
73. New and exceptionally beautiful bodies by Fisher
 74. Duco finish—Coach a rich dark blue—Sedan in aqua-marine blue with black upper panels—Coupe in sage green with black upper panels
 75. Plate glass windows
 76. Tarnstaid window regulators
 77. Door locks
 78. Sun visor
 79. Automatic windshield wiper
 80. "VV" one-piece windshield
 81. Dome light (Coach and Sedan)
 82. Beautiful durable upholstery over deep springs
 83. Balloon tires

This puzzle is made up of some of the Chevrolet 83 quality features listed on each side of the puzzle and contains many regular cross word puzzle words. It is a real test of your ability at working cross word puzzles.

We will divide fifty dollars (\$50.00) in cash equally to individuals submitting to us at our showroom the correct solution of this puzzle if received before midnight Saturday, Feb. 28th 1925, or will double the amount awarded any individual if applied as credit on a Chevrolet Purchase Certificate.

- VERTICAL**
1. Parts of the new Chevrolet compensating carburetor.
 - Outer (Obs.).
 - Tag prefix combined with reversible describes the type of steering gear on the Chevrolet.
 - Printer's measure.
 - Made incorrectly.
 - Ele.
 - Period of time.
 - Measure of length.
 - Chevrolets have little on the coil.
 - Musical drum.
 - To form a recess.
 - Fault of compass.
 - Strik.
 - Pit out.
 - Suggests.
 - Once over (abb.).
 - Famous durable finish on all Chevrolet model.
 - Metal.
 - Because of pipe (Chevrolet's 4 cylinder 100 h.p. operates economy).
 - Attached.
 - Etched.
 - Roman bronze.
 - About his last name.
 - Note of distinction.
 - Elevation (abb.).
 - Flight (obs.).
 - Kept.
 - Having a common center.
 - Build.
 - Having a crest.
 - Electrical particles.
 - Alta (obs.).
 - Container for tire valve.
 - Agile.
 - Anger.
 - East Jordan (abb.).
 - Independent Labor (all.).
 - Diameter (abb.).
 - North American Indian.
 - Cousin.
 - Yam (obs.).
 - Are not (cont.).
 - Kind of tree.
 - Immense.
 - Chilly.
 - Sign.
 - Underwriting account (abb.).
 - If you are up to date you will soon be doing this in a Chevrolet.
 - Followers of the fashions.
 - In regard to (abb.).
 - Threw out.
 - The big reason for Chevrolet strength.

- DEFINITION**
- Female deer.
 - Place.
 - Sisal.
 - Insect.
 - Describes the new Duco finish on Chevrolet bodies.
 - More economical (is true of Chevrolet upper).
 - Famous humorist.
 - Explosives.
 - Descriptive of Chevrolet brakes.
 - More courageous.
 - Chrysanthemic acid.
 - For sale.
 - Doctors (abb.).
 - River in Western Africa.
 - French article.
 - American Protective Ass'n (abb.).
 - Uncle (S. Afr.).
 - Owing.
 - River in Spain.
 - Modified sextant.
 - Madame (abb.).
 - Kind of window regulator on Chevrolet closed cars.
 - Ermine (ref. spelling).
 - Standard equipment on closed model Chevrolets.
 - Form of snowshoe.
 - Always delivers gas (Init.).
 - Applies to Vacuum tanks on Chevrolet.
 - Lord Advocate of Scotland (abb.).
 - Tart.
 - Type of springs used on Chevrolet cars.
 - Descriptive of Chevrolet coupe for business purposes.
 - Western.
 - Expense.
 - Discover.
 - Old boy.
 - Notes American handmaster.
 - Year (abb.).
 - Party in power.
 - Three-toed sloth.

- DEFINITION**
- Toward.
 - Related to.
 - Buddy.
 - Burdens.
 - Evening.
 - Hurry.
 - Chevrolet gives Quality in addition to this.
 - Bands.
 - River in Asiatic Turkey.
 - City in Sumatra.
 - To play a trump card.
 - Expense for this is negligible to Chevrolet owners.
 - Civil Engineer (abb.).
 - Royal Engineer (abb.).
 - Elegant in appearance.
 - Poise.
 - Revel (obs.).
 - Assure (obs.).
 - Beverage.
 - West Indies (abb.).
 - Fathered.
 - Attack.
 - 55 degree joint.
 - Sedate.
 - Chevrolet's position in the low-priced field.
 - Southern state (abbr.).
 - What the latest Chevrolet is.
 - Mistake (abb.).
 - On the way.
 - Performance.
 - Type of vehicle and station on Chevrolet.
 - Metallic round.
 - Possessive pronoun.
 - When you go on this go in a Chevrolet for comfort.
 - New style spring (abb.).
 - Iron propeller.
 - Biblical character.
 - Girl's name.
 - Violent whirlwind.

- DEFINITION**
- Two words of advice to prospective automobile buyers.
 - Describes what a Chevrolet owner thinks of his car.
 - Molten (colloq.).
 - Rocky pinnacle (obs.).
 - Race.
 - To spread for drying.
 - City in New Hampshire
 - That man.
 - National League (abb.).
 - The number of quality features which make the Chevrolet pre-eminent in its field.
 - Make of spark plug used on all Chevrolets.
 - Latin diplothon.
 - Forced abdication.
 - Household pet.
 - Inscription found on altar cloths.
 - Antioch.
 - Illegal profit.
 - Color.
 - Manuscripts (abb.).
 - Pedal appendage.
 - Mineral spring.
 - Lecture (Lat.).
 - These are semi-elliptic in the Chevrolet.
 - Mistake (abb.).
 - Loose egg.
 - Kind of lubricating system used in Chevrolet chassis.
 - Each (abb.).
 - English diagraph.
 - Refined feature of Chevrolet body design.
 - Exclamation.
 - Iron (chem. symb.).
 - Plyer.
 - Indo-Chinese hill tribe.
 - Picture imaginings.
 - Frozen whipped cream.
 - Limited (abb.).
 - Describes the comfort of Chevrolet cars.

- DEFINITION**
- From this to high gear with an easy shift of the hand lever or a slight pressure on the clutch pedal.
 - Mystical Hindu ejaculation.
 - Scarcely.
 - Suffix indicating action.
 - Female relative (abb.).
 - Small body of water.
 - Yes in French.
 - Of oak.
 - Limbs.
 - 100,000 rupees.
 - Remains.
 - Perception.
 - Limitation pearls.
 - Upper end (abb.).
 - Tint.
 - East Kent (abb.).
 - Proceeding by degrees.
 - Nearer (obs.).
 - Parts of bodies.
 - Genus of mollusks.
 - Tantalum (chem. symb.).
 - Indian gullet.
 - Payment by way of blot.
 - Device used for clamping cylinder head to cylinder block on some motors.
 - East Indies (abb.).
 - Chevrolet improved carburetor does not load when the motor is running this way.
 - 1945.
 - These are unlimited with Chevrolet Motor Co. Div. of General Motors Corp.
 - Possessive pronoun.
 - One of these circulates the water and one the oil on the Chevrolet.
 - This axle has a banjo-type housing in the New Chevrolet. This removes the exhaust gases from the Chevrolet motor.
 - When you have one show him the town in a Chevrolet.
 - Worry.
 - Assistant (abb.).
 - Chevrolet tools come in this.
 - Easy starting device connected with Chevrolet carburetor.
 - They never skid (abb.)—refers to balloon tires.
 - Edge.
 - Native metal.
 - One of the features that make the Chevrolet attractive to women drivers.
 - Kind of starter generator, and ignition in all Chevrolets.

Arey Brothers

DISTRIBUTORS — — — SHELBY, N. C.

