



SOCIETY

Items intended for this department must be telephoned or sent to the Society Editor before 11 a. m., the day before publication. All news items of interest to women are welcomed.

Chicora Club Meeting. The Chicora club is meeting this afternoon at 3:30 o'clock at the home of Mrs. F. O. Gees.

Card Party. Mrs. Ogburn-Stephenson and Mrs. Gerald Morgan are entertaining with a beautiful card party this afternoon at 3:30 o'clock at the club rooms.

Fashion Show. The Fashion show will be an outstanding and brilliant social event tonight at the Princess theatre. Afternoon division No. 1 is sponsoring it and the models will be Shelby women who will wear apparel from Fannings shop. Delightful music will be rendered by outside talent.

Daughters of the Confederacy. The Daughters of the Confederacy will hold their regular meeting Friday afternoon at 3:30 o'clock in the Woman's club room.

Wedding. The wedding of Miss Helen Laughlin and Mr. A. J. Pleasant, of Spartanburg, S. C., which took place Saturday night at nine o'clock. Mr. Green, of Mooresboro, and Miss Juanita Hoyle accompanied the couple to Spartanburg and witnessed the happy event.

Registration. The afternoon division No. 1 had for its hostesses on Thursday afternoon at 3:30 o'clock. Mrs. E. A. Houser, Mrs. Rush Hamrick and Mrs. O. Max Gardner. These club women had made the club rooms most attractive with beautiful fall flowers and autumn leaves arranged artistically on the tables, piano and in floor baskets.

Halloween Party. Miss May Lattimore the bright and charming young daughter of Mr. and Mrs. Nelson Lattimore celebrated her birthday on Monday evening with a most beautiful and enjoyable Halloween party. Thirty guests were invited and they all came in Halloween costumes and much fun and merriment was enjoyed by guessing who the "books" were. The rooms were gorgeously decorated with the Halloween suggestions and also lovely fall flowers.

LeGrand and Miss Lever Reception. On Wednesday afternoon at the charming home of Mrs. R. T. LeGrand, Mrs. LeGrand and Miss Carole Lever were the gracious joint hostesses entertaining with a large reception honoring Mrs. Charles Hocy a recent bride. The golden color of yellow was the beautiful color scheme used, combined with green, for the lovely decorations on this occasion. Chrysanthemums large and small in all their yellow glory were placed in bowls and vases and intertwined with greenery, made a most charming effect throughout the spacious rooms. Greeting the guests at the door were Mrs. J. Frank Roberts and Mrs. R. L. Ryburn. Introducing the guests to the receiving line were Mrs. W. F. Mitchell and Miss Elizabeth Roberts. The receiving line was formed in the living room and was as follows. Mrs. LeGrand who wore a beautiful gown of pink georgette beaded in pearls and brilliant. She wore a corsage of roses on her shoulder. Mrs. Charles Hocy wore a stunning gown of electric blue trimmed in gold lace. Mrs. R. M. Gidney wore a lovely gown of orchid georgette beaded in pearls. Miss Lever wore a period gown of sky blue taffeta with shoulder corsage of pink roses. Mrs. L. F. Caldwell of Charlotte, sister of Mrs. LeGrand was most handsome in a black net gown beaded in jet and she wore a corsage of pink roses. Mrs. Sam Lattimore wore a lovely gown of flame chiffon beaded in pearls and trimmed in gold lace. Mrs. McDiarmid wore a handsome gown of mauve cut velvet. Inviting the guests into the dining room were Mrs. D. Z. Newton and Mrs. Shovine Beam. The table was most beautiful in here. Covering the table was a huge silver basket holding the loveliest of yellow roses and soft trailing greenery.

November. Trees of yellow and with a background of green, the Indian summer sun shimmering through the branches making a silver sheen, and casting shadows beside the trees. The color of perfect blue, flecked with drifting clouds at times, and a happy invigorating air and smell of the tang of fall—this is November. The Latin got its name from the November "novem" nine. The flower of this month is the stately chrysanthemum and the birthstone is the topaz of true friendship. November has three outstanding days. Thanksgiving day the Thursday in the month, President election day, the first election after the first Monday in November in every fourth year, and the day, November 11th, Armistice day. Some of the famous birthdays that come in November are Louisa Alcott, Thomas Aldrich, William Cullen Bryant, Andrew Carnegie, Samuel Johnson, James A. Garfield, George Washington, William Pitt, John Philip Sousa, and John Stevonson and Henry Clay. The five great events happened in November were:

War of Nations ended with Armistice day. Last Spike driven in Canadian Pacific railway. First Congressional session ever held in Washington. Treaty between United States and Panama for the canal. During this month many meteoric displays may be seen. This is the month to transplant trees and shrubs else to graft and prune trees and flowers. Football is the game of all games this month. Furnaces have been started, winter clothes gotten out, and preparedness made to settle down for a long winter.

Mrs. D. W. Royster Entertains Cecelia Club. The members of the Cecelia Music club were entertained most delightfully by Mrs. D. W. Royster on Wednesday afternoon at 3:30 o'clock. The rooms of this lovely home were made beautiful by autumn's richest flowers, chrysanthemums in all their beautiful colors, the late snap dragons, the dainty cosmos, and the superb fell roses in an exquisite shade of pink decorated tables mantels and consoles. This being a social meeting, four tables of rock was played and most enjoyed by the number of members present. The most attractive score cards of handpainted chrysanthemums were used, and each table had a rustic vase filled with the fall flowers centering it. After the games, a business session was held and an invitation from the Music club of Lincolnton was accepted, the club to go to Lincolnton on November 26 and give a program. After the business session Mrs. Royster assisted by Mrs. S. S. Royster, Miss Amos Williams and Mrs. Tom Moore served a most delicious salad and sweet course with coffee.

Afternoon Division No. 1 Entertained. The afternoon division No. 1 had for its hostesses on Thursday afternoon at 3:30 o'clock. Mrs. E. A. Houser, Mrs. Rush Hamrick and Mrs. O. Max Gardner. These club women had made the club rooms most attractive with beautiful fall flowers and autumn leaves arranged artistically on the tables, piano and in floor baskets. A large number was present, and Mrs. Coleman Doggett was the efficient leader for this meeting. The subject was "Two European Capitals." In the absence of Mrs. Holcombe, Mrs. M. Graham gave a charming reading. This was followed by a splendid paper on "An American's London," by Mrs. Colin Hull. A most delightful paper was prepared by Mrs. Rhoe Hamrick and read by Miss Laura Cornwell, the subject being, "A Loiterer in Paris." Miss Pat Dudley played a beautiful instrumental solo and Miss Elizabeth Austell gave a most thoroughly enjoyed reading which closed the program. The hostesses then served a most delicious salad and coffee course with nuts and bon bons.

Registering Piano—\$450, \$530, \$595, \$700. Uprights—\$295, \$350, \$440. Grand—\$785. Nationally Priced—Same Prices Everywhere in U. S.

W. A. Pendleton "EASY TO PLAY." Gentlemen: Gulbransen Upright Pianos and Information Gulbransen Registering Pianos or Gulbransen Grand Pianos Name Address FREE—Sing Christmas Carols this year. Book of four fife Carols free to inquirers.

SCHEDULES Inter-Carolina Motor Bus Company Shelby to Charlotte—7, 9, 11, 1, 3, 5, 7:30—Charlotte to Shelby—8, 10, 12, 2, 4, 6. Kings Mountain to Charlotte—7:30, 9:30, 11:30, 1:30, 3:30, 5:30, 8:30. Direct connection made in Kings Mountain for Spartanburg and Greenville in the morning—One hour layover in the afternoons. Bessemer City to Charlotte—7:45, 11:45, 1:45, 3:45, 5:45, 8:45. Gastonia to Charlotte, leaves every hour on the hour, from 7 a. m. to 8 p. m. Connection made there for Rock Hill, S. C.; Spartanburg, Greenville, Greer, Lincolnton and Cherryville, York and Clover S. C. Gastonia to Shelby. On the odd hours, making connections for Rutherfordton, Hendersonville, Asheville and Statesville. Gastonia to Cherryville—8:30, 12:10, 4:10, 8:10. Charlotte to Gastonia—7:15, 10, 2, 6 p. m. Charlotte to Rock Hill—8, 10:30, 4:15. Bus leaves Spartanburg 9:15 p. m. Connection at Kings Mountain, Charlotte. Telephones: Charlotte 2671; Gastonia 1051; Shelby 450; Shelby to Rutherfordton—8 a. m. and 1 p. m. Rutherfordton to Shelby—8:30 a. m. and 2:15 p. m. Shelby to Asheville—10:30 a. m., 12, 2, 4, 6, p. m. Asheville to Shelby—8, 9 and 11 a. m. and 2, 4 p. m. Shelby—7:20 a. m.; 10:00 a. m.; 1 p. m.; 4:30 p. m. Lincolnton—8:30 a. m.; 11 a. m.; 3:00 p. m.; 6:30 p. m. Schedules Subject to Change.



Life and Laughter, Music and Song IN YOUR HOME THE YEAR ROUND

Let it linger on . . . Some of the joy of Christmas time—some of the sparkle, the merriment, the fun. It will be the whole year through—if there is music in your home. Music that invites the family to gather round . . . to sing the good old songs and the infectious new ones . . . to roll up the rugs and dance. And that, of course, means nothing else than music that you play YOURSELF.

YOU need not know a note to have such music in your home today. The Gulbransen Registering Piano has now made that unnecessary. It gives you all the pleasure of hand playing. It enables you to play with the naturalness and beauty of hand playing.

That is why there is no other piano like the Gulbransen. That is why it is today the largest selling piano in the world. Registering Pianos—\$450, \$530, \$595, \$700.

GULBRANSEN Minuet Model \$295 FOR HAND PLAYING

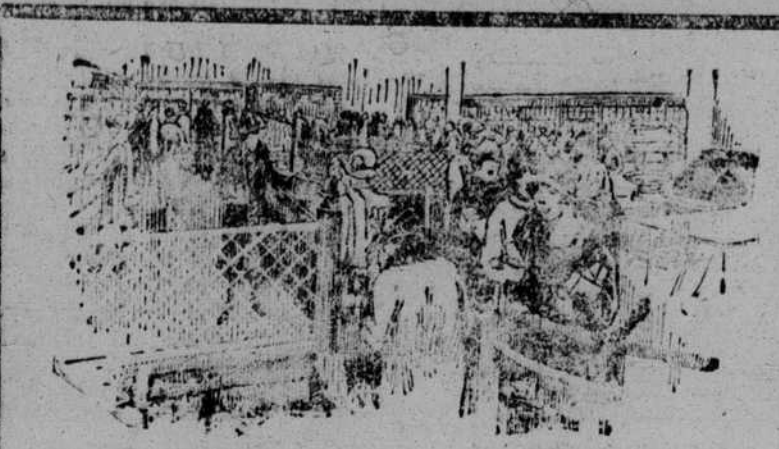
Children like to practice and play on the Minuet Model because it fits in with their imaginative ideas of how big a piano ought to be! A "storybook" piano, suggestive of fairy fingers and childish fancies. Yet it has a full, big, pleasing tone. Preferred by many housewives because it fits in so many places, is an ornament to any room, and its Du Pont Duco finish is so easily kept clean.

Uprights—\$295, \$350, \$440. Grand—\$785. Nationally Priced—Same Prices Everywhere in U. S.

W. A. Pendleton "EASY TO PLAY." Gentlemen: Gulbransen Upright Pianos and Information Gulbransen Registering Pianos or Gulbransen Grand Pianos Name Address FREE—Sing Christmas Carols this year. Book of four fife Carols free to inquirers.

SCHEDULES Inter-Carolina Motor Bus Company Shelby to Charlotte—7, 9, 11, 1, 3, 5, 7:30—Charlotte to Shelby—8, 10, 12, 2, 4, 6. Kings Mountain to Charlotte—7:30, 9:30, 11:30, 1:30, 3:30, 5:30, 8:30. Direct connection made in Kings Mountain for Spartanburg and Greenville in the morning—One hour layover in the afternoons. Bessemer City to Charlotte—7:45, 11:45, 1:45, 3:45, 5:45, 8:45. Gastonia to Charlotte, leaves every hour on the hour, from 7 a. m. to 8 p. m. Connection made there for Rock Hill, S. C.; Spartanburg, Greenville, Greer, Lincolnton and Cherryville, York and Clover S. C. Gastonia to Shelby. On the odd hours, making connections for Rutherfordton, Hendersonville, Asheville and Statesville. Gastonia to Cherryville—8:30, 12:10, 4:10, 8:10. Charlotte to Gastonia—7:15, 10, 2, 6 p. m. Charlotte to Rock Hill—8, 10:30, 4:15. Bus leaves Spartanburg 9:15 p. m. Connection at Kings Mountain, Charlotte. Telephones: Charlotte 2671; Gastonia 1051; Shelby 450; Shelby to Rutherfordton—8 a. m. and 1 p. m. Rutherfordton to Shelby—8:30 a. m. and 2:15 p. m. Shelby to Asheville—10:30 a. m., 12, 2, 4, 6, p. m. Asheville to Shelby—8, 9 and 11 a. m. and 2, 4 p. m. Shelby—7:20 a. m.; 10:00 a. m.; 1 p. m.; 4:30 p. m. Lincolnton—8:30 a. m.; 11 a. m.; 3:00 p. m.; 6:30 p. m. Schedules Subject to Change.

CLEVELAND STAR EVERY-OTHER-DAY



THE SYSTEM MUST BE RIGHT TO GROW AS IT DOES. 750 new Piggy Wiggly Stores opened in the past 30 months tells the story. The American Housewife prefers to make her own selections from Nationally Known Food Products, Fresh Fruits and Vegetables—prices as low as quality is high.

- NICE RIPE BANANAS, Dozen 20c
CRISP FIG BARS, 2 pounds 25c
Wa'auga Sauer KRAUT Can 12 1/2c
Full Cream CHEESE, Pound 32c
Fancy Blue Rose RICE, Whole Grain, Pound 11c

- LARD
SWIFT'S JEWEL OR CRESCENT 2 lb. Bkt. 35c, 4 lb. Bkt. 67c, 8 lb. Bkt. \$1.28
SUGAR 10 lb. Bag 70c, 25 lb. Bag \$1.70

- Tall Can Pink SALMON 17c
Crown Cake FLOUR, 39c
CAKE BAKING TIME IS HERE—We have everything that you need for cake.

- Laver Figs, Raisins, Dates, Currants, Crystallized Pineapple, Crystallized Ginger, Crystallized Cherries, Chrysanthemum Citron, Shelled Walnuts, Shelled Pecans, Shelled Almonds, Lemon Peel, Orange Peel.
Campbell's Pork and Beans, 3 for 25c

- Dromedary Dates, 10 Ounce Package 23c
Maxwell House COFFEE 1 lb. can 52c
Maxwell House Coffee, 3 lb. can \$1.52

IN OUR MARKET Fresh Fish and Select Oysters. Western Baby Beef, Any Cut. Guaranteed All Pork Sausage . 30c lb. Southern Style Sliced Bacon . 45c lb. Swift's Premium Ham, sliced . 50c lb. Ground Beef, Fresh . 20c lb. Sugar Cured Picnic Shoulders . 27c lb. DON'T FAIL TO BE ON TIME SATURDAY EVE, NOV. 6th, AT 2 O'CLOCK And see the Jar of Pickles weighed and see if you won. It will be necessary for you to be there to claim the prize.

PIGGY WIGGLY The Road to Prosperity Leads Through the Turnstiles at Piggy Wiggly

THESE WANT AD'S BRING RESULTS WANT AD'S

Rates For Want Advertisements In This Column. Minimum Charge For Any Want Ad 25c. This size type 1c per word each insertion. This size type 2c per word each insertion. This size type 3c per word each insertion. Ads that run less than 25c. will be charged 25c for first insertion and above rate on subsequent insertions.

\$13.95 BUYS A Full size West-O-Lite Battery. C Scoggins. 3t-1c

LOST FRIDAY OCTOBER 29, black pig, weighs about 35 or 40 pounds. Dock Hill, Rt. 7, Shelby. 2-3p

THE MOST UNUSUAL SALE in the history of our business is now on at both our stores. We urge you to pay us a visit. Campbell's, Shelby and Lawndale. 1-5p

BUY CHRISTMAS GREETING cards now and have them delivered later. A representative will call at your home and show you samples if you will phone No. 11, The Star office. The cards are made to order with a beautiful assortment of designs. 5-22p

IF YOUR Speedometer Don't Work C Scoggins. 1f

WOOD IN ANY QUANTITY and quality. Prepared for stoves or fireplace. Morrison Transfer, Phone 406. 1f-7c

FOR SALE AT A BARGAIN two Burroughs adding machines and one billing machine. Campbell Department Store, Shelby, N. C.

AN EXIDE BATTERY IS THE cheapest in the long run. Hawkins Bros., Shelby. 12-11c

BY MAIL UNTIL CHRISTMAS We will hand-paint any kodak or post card picture for one dime and a two cent stamp. Cash with order. Dixie Kodak Shop, 107 Parrish Place, Durham, N. C. 1-5p

BEFORE YOU BUY RED CEDAR shingles, galvanized roofing, lime, cement and plaster see Campbell's, Shelby and Lawndale. They will sell you for less. 1-5c

FOR SALE 15 HOLLEMAN'S barred rock cockerels. T. F. Sellers, Kings Mountain, N. C. 9-11p

STRAY MULE AT MY HOUSE. Owaer call. Geo. E. Spurlin. 2-3p

EVERY DOLLAR THAT YOU spend at our big sacrifice sales will mean a wonderful saving for you. Don't miss it. Campbell's, Shelby and Lawndale. 1-5c

COME TO US FOR HEMSTITCHING, pleating, and buttons covered from your own material. Shelby Hemstitching Co., Shelby, N. C. Over Union Trust Co., Phone 157. 9-1c

FOR SALE—ONE LLEWELLYN and Blue Belcher setter pup, six months old. W. B. Beason, phone 400-J. 1-5p

ORDERS TAKEN NOW FOR Christmas greeting cards. Place your order early and make sure of delivery. Our cards are individual and cheaper than stock cards.

AN EXIDE BATTERY IS A good investment. Hawkins Bros., Shelby. 12-11c

WE HAVE AN EXIDE BATTERY for every make of car. Hawkins Bros. 12-11c

AN EXIDE BATTERY IS dependable for winter service. Hawkins Bros. Shelby sell them.

HAVE YOUR HOUSE WEATHER stripped and save fuel this winter. C. A. Morrison and Son. 12-22c

WANTED: CAST IRON scraps. Pay 40 and 50 cents hundred according to grade. Shelby Foundry and Machine Shop. 3t-cop-5

WANTED PLAIN TYPEWRITER desk with drawers on one side. Must be in good condition. Janet Hosiery Mill. 3t-27c

BEAUTIFUL LINE OF INDIVIDUAL Christmas greeting cards. Handsome designs made to order. Envelopes included. Phone The Star and a representative will call and show you samples. 5-22p

REPAIR WORK ON ALL KINDS of automobiles, trucks and tractors. Prices reasonable. R. G. Stockton, Best's old battery stand West Marion street. 1f-16c

WANTED: CAST IRON scraps. Pay 40 and 50 cents hundred according to grade. Shelby Foundry and Machine Shop. 3t-cop-5

FOUND N. C. AUTO LICENSE No. 105-153 by John Webb. Owner can get same at Star office. 2t-5c

CHICKS FOR SALE. RED, Rocks, Glants. Nov. 9th, 23rd. \$14.00 per hundred prepaid. D. P. Washburn, Route 4. 2t-3p

FOR RENT—TWO UNFURNISHED light house keeping rooms, 308 N. Morgan Ct. Phone 353. 1f-3

ROOMS AND MEALS. MRS. Frank Rippey, 417 S. LaFayette street. 3-3p

Butter Talk Of Interest to Farms (By Wm. Linberger.) The production of creamy butter made in September in the United States was 108,325,000 pounds. The state of Minnesota made 18,238,900 pounds. Iowa made 12,760,700 pounds. Wisconsin made 12,607,400. Ohio made 7,115,200 pounds and so on down to North Carolina. This state made 1393,300 pounds, and Cleveland county made around 25,000 pounds. Our county has a good start in producing butter and we should double the amount or even make 100,000 pounds a month which would give us an income of around \$40,000 a month and nearly a half million dollars a year that is cash for butter, on top of that we would have milk-milk, manure, etc. Most of our farmers have one and two cows, if they would add one or two more cows we could easily make 50,000 pounds of butter a month, then 100,000 pounds, then 200,000 per month and so on—Cleveland County Needs More and Better Cows and Bulls! We are far behind it is estimated that the income from dairy products in the state of Minnesota, this year will be \$192,000,000 and the income from the egg production will be \$40,650,000. The dairy business is becoming more and more independent in the northwest (the land of hard winters) and we folks in Cleveland county should turn to the farm dairy business more and more, also the poultry business and hog business—and the only way to do it is to grow more feed stuff—buy more good cows and raise them. "Our cotton crop is really not an over-production, but merely a result of lack of proper diversification," say many experts. If the cows owned in Cleveland county were the real good dairy type the income would be doubled and if every farmer would add one, two or three more good cows to what he has now, there is no telling what the income would amount to—but thousands and thousands of dollars—and within a few years we would be independent. SALE OF LAND FOR PARTITION Under and by virtue of an order of the Superior court of Cleveland county, N. C., in the case of Mull Patterson and others vs. M. Pink Patterson and others, Special Proceeding No. 1511, I, the undersigned Mull Patterson, as commissioner, will on Monday, December 6, 1926, at 12 o'clock noon or within legal hours, at the court house door in the town of Shelby, sell for partition all of that piece, parcel or tract of land situate in No. 4 township, Cleveland county, N. C., and described by metes and bounds as follows: Beginning at a rock pile on old line and running with said line and a new line north 45 west 33.50 chains to a rock, Patterson's line corner; thence with Patterson's line north 20 1-2 east 12.25 chains to a stake; thence north 60 1-3 east 2 chains to a rock, a new corner; thence a new line south 45 1-4 east 36.25 chains to a rock in the old line; thence with the old line south 38 1-2 west 13.25 chains to the beginning; containing fifty (50) acres. Terms of sale: One-third cash, payable on day of sale; balance 12 months thereafter. Deferred payments to be evidenced by notes bearing 6 per cent interest and title reserved until the payment of same in full. This November 4, 1926. MULL PATTERSON, Comms. O. M. Mull, Atty.