



Mrs. George Thompkins Gives Surprise Birthday Mrs. George Thompkins gave a delightful surprise birthday party for her husband on his birthday on Monday evening at eight o'clock.

Fair Week On The fair is on this week and from all accounts it will be a great success. The club and church women have booths and are selling all kinds of good things to eat on the fair grounds.

Madre Non Club Held Delightful Meeting The attractive home of Mrs. Clyde Short in Belvedere Heights on Friday afternoon, the members of the Madre Non held a most delightful meeting.

Newman-Grice Wedding Beautiful in its simplicity was the wedding of Miss Eva Lois Grice youngest daughter of Mrs. James Grice, to Mr. Carl Franklin Newman of Wilson, on Tuesday morning at seven o'clock at the home of the bride's mother.

Miss Mundy Contests For Charlotte Prize Miss Ouida Mundy of Shelby has been elected as a contestant in a popularity contest for the purpose of augmenting the Elks Christmas charity fund.

Miss Ouida Mundy of Shelby has been elected as a contestant in a popularity contest for the purpose of augmenting the Elks Christmas charity fund.

Miss Ouida Mundy of Shelby has been elected as a contestant in a popularity contest for the purpose of augmenting the Elks Christmas charity fund.

Miss Ouida Mundy of Shelby has been elected as a contestant in a popularity contest for the purpose of augmenting the Elks Christmas charity fund.

Advertise in The Star

All items intended for this department must be telephoned or sent in to the Society Editor before 11 a. m., the day before publication. All news items of interest to women are welcomed.

WILL ASK MCLEAN FOR QUICK TRIAL OF WOMAN SLAYER

Reidsville.—(INS.)—Odds today were that pretty Mrs. Eugene Gatlin, 20-year-old bride of Reidsville, fire chief and alleged patricide, will learn her ultimate fate before the next session of Rockingham county criminal court.

In fact decision to request Governor McLean to order a special term for the sensational case already has been made by the solicitor although the finishing touches have not yet been applied to his case.

It was expected that these items would be determined in the near future, and a request was sent to the governor to order a special term of court for some time between now and the next regular session of Rockingham Superior court, which convenes early in 1927.

The docket for the January session is unusually large, according to the solicitor, and unless a special term of court is obtained, many of the cases now docketed will have to go over to the next term. It was estimated that the Gatlin trial itself might consume as much as two weeks' time.

Numerous witnesses will be presented by each side. The defense, however, has shrouded its case in secrecy, and so as not to divulge their course to the state, they waived preliminary hearing. The state has been examining witnesses in its long investigation of the case and all of these, it was expected, would be placed on the stand when the time arrived.

The star witness for the prosecution will be Rev. Thomas F. "Thunderbolt" Jardue, erstwhile Reidsville minister who instigated the sensational probe when he divulged to authorities that the youthful alleged murderer confessed the crime to him.

Direct wireless communication between Germany and the Philippines (Nauen-Manila) has now been opened for commercial use by the Transradio company.

Ordinary, urgent, half-rate and press radiograms can be handled at any German postoffice or telegraph office for transmission. The rate for ordinary messages is about 77 cents a word.

LAUNCH ATTACK ON DEATH CHAIR

Copenhagen, Denmark—Three famous Danish physicians have launched an attack on the electric chair, which they term "an American barbarity."

All three concur in the belief that the electric chair does not kill. It merely paralyses the victim, the physicians declare, and the prison doctor completes the execution by failing to revive the person shocked.

Dr. Marius Claudius, chief of the laboratory of one of Copenhagen's largest hospitals, denounces the electric chair in an article in the journal Politiken.

Dr. Viggi Christensen, famous nerve specialist, president of the Danish Medical society, Danish government medical counselor and a member of the American League of Mental Hygiene, supports Dr. Claudius in another article, in which he says:

"The stopping of breathing and the heart beat is not sign whatever of death. Death rigidity or spots gives the only safe right to declare a man dead. Thus in our hospitals nobody must be removed from bed before six hours after the supposed death."

Whether the victim suffers after the electrocution is a hard question to answer, but, of course, there is no suffering if the consciousness which must be supposed—is paralysed.

Solicitor Gwyn was the one who called death in the electric chair "incalculable" rudeness, and the executioner work on the part of the doctors, who befoul the scientific name.

To speak of death in the electric chair as "humane," he writes, "is as absurd as nobody dies in the electric chair. The greatest authority in the world, Professor of Physiology of Vienna, says that electric shocks kills, but only paralyzes the centers of breathing and the heart's motions. Even persons hit by lightning can be saved if help comes in time. Dissection never shows any changes in the body after the current, and the electric chair therefore only acts like the stopping of the pendulum of a clock, not spoiling the main work."

Professor Knud Sand, heads of the Law-Medical institute, adds his voice of protest.

"The point is," he declares, "that death by electricity in most cases must be considered uncertain. It is absolutely wrong to declare a man dead after the electric chair has stopped his breathing and heart beat."

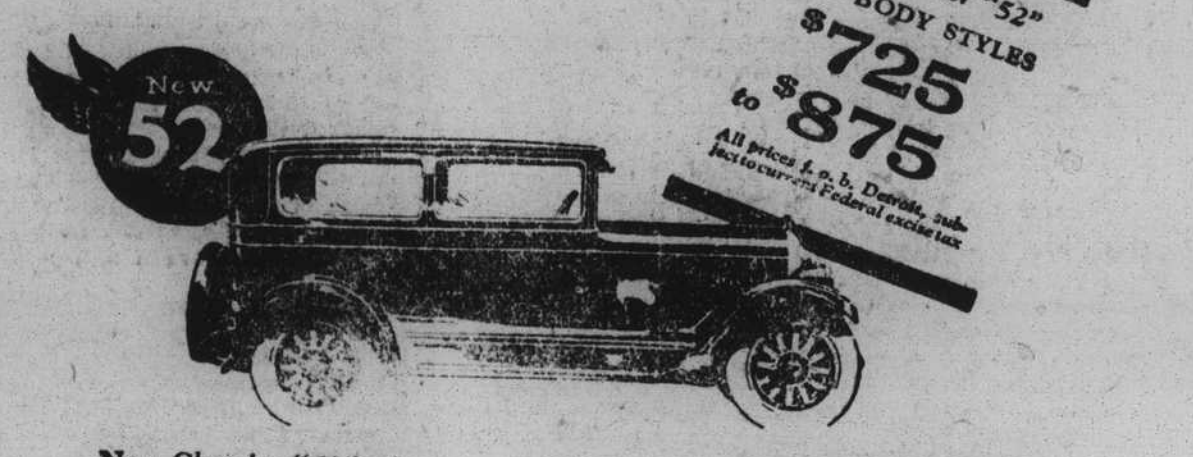
CHRYSLER

'52 \$725 to \$875 '62 \$1095 to \$1295 '72 \$1495 to \$1745 '80 \$2495 to \$3395

The New Dominant Values In Four Great Markets

CHRYSLER'S latest creations—"52," "62," "72," with the Imperial "80"—are winning popular preference in their four great markets in a way unprecedented in the entire history of the industry.

To thousands upon thousands of motorists their outstanding superiorities in appearance, performance, riding comfort and safety have made it increasingly obvious that Chrysler Standardized Quality assures very definite advantages in the things that count highest in determining motor car value.



New Chrysler "52"—52 and more miles an hour. Acceleration and smoothness no other low-priced car can approach. Full-sized bodies of wood and steel, with ample capacity for adult passengers. Saddle-spring seat-cushions. Fine mohair upholstery. Utmost handling ease with adjustable steering wheel. Indirectly lighted instrument board.

CHRYSLER MODEL NUMBER MEANS MILES PER HOUR

GEO. THOMPSON ATTEND THE CLEVELAND COUNTY FAIR BIGGER AND BETTER THAN EVER BEFORE.

An Open Letter to the Editor From the President of General Motors

LAST SPRING I wrote you that my belief in the country newspaper had led us in General Motors to decide to advertise our products together in the small-city press of the country. The returns from the series of the messages recently published have justified that faith; and we shall continue to advertise in your community through your newspaper this fall.

Fire Drills Are Required In All 2-Story Schools

A bulletin recently issued by Stacy W. Wade, state insurance commissioner reveals some startling facts with reference to loss from fire in North Carolina during the year 1926. This loss was incurred in spite of an intensive campaign for the prevention of fires.

During the year 286 people were burned to death while more than twice that number were injured. There was a total loss from fires amounting to \$6,649,039. In all 3,436 buildings were destroyed by fires. This number includes 1,330 residences, 140 stores, 20 school houses, 17 churches and 61 factories.

Attention is called to the fact that in a 2-story building teachers are required by law during each month to have a fire drill. This is to be done only after the pupils have been notified that there will be a special drill and after a commonly understood signal for the drill has been given.

MY MILK COW GOT AWAY last night. She is a red cow with horns. Reward if returned to Philip Wilson, Shelby, N. C.

SPECIAL EXCURSION Account FAIR OF THE IRON HORSE & PAGEANT To WASHINGTON, D. C. And HALETHORPE, MD. Via SOUTHERN RAILWAY SYSTEM And Baltimore & Ohio R. R. WEDNESDAY, OCT. 5TH, 1927.

YOU CAN'T BEAT B. & L. SHARES—Come in now and start a few shares and see how fast your savings will grow—One Share, 25 cents a week, four shares \$1.00 a week and so on. How much can you save? It's easy after you start.

SAVE—To Build A Home. SAVE—For Future Needs. OUR OCTOBER SERIES OPENS SATURDAY, OCTOBER FIRST. Start a Few Shares Today. J. L. SUTTLE, Secretary. CLEVELAND BUILDING & LOAN ASSOCIATION Office With CLEVELAND BANK & TRUST CO. SHELBY, N. C.

PENNY COLUMN

TIRE TUBES CHEAP AT A. B. C. Tire Shop. 4-22c FOR SALE OR WILL TRADE for small farm, house and lot in Shelby on paved street and rented for \$15 per month. Lee B. Weather.

FOR RENT NEW SIX ROOM house furnished. Cleveland Springs road \$30 per month. Call 673. 2-28c A. B. C. TIRE SHOP IS IN Arrey Building. 4-25c

STENOGRAPHER WITH THREE years experience wants to locate in Shelby. Familiar with general office work. Phone 345-R. 3-25c FOR RENT—8 ROOM BUNGALOW, practically new; on hard surface street, with all modern conveniences. Available October first. M. P. Coley, phone 203. 1f-5c

FOR RENT NEW SIX ROOM house furnished. Cleveland Springs road \$30 per month. Call 673. 2-28c FOR RENT SIX ROOM HOUSE water and lights. South DeKalb St., Howell Transfer, Phone 718. 1f-5c

FOR 10 YEAR LOANS ON city property see Bert Price. The Royster Co. 1f-20c ROOMS FURNISHED FOR LIGHT house-keeping. Modern conveniences. Close in Phone 345-R. 3-25c CONTRACTING AND GENERAL repair work. No job too large or small. Bids cheerfully furnished. Costner and Glasco, Phone 67-J. 1f2

FOR RENT NEW SIX ROOM house furnished. Cleveland Springs road \$30 per month. Call 673. 2-28c STRAYED OR STOLEN—ONE black back, blue breasted hound dog, September 22. Return to M. P. Elliott and get reward. Shelby, N. C. 3-26c

FARMERS—IF YOU HAVE any oats or barley for sale we will pay you highest cash prices. Cleveland Feed Company. 1f-3c THE ONLY TEXACO STATION close in town is at A. B. C. Tire Shop at Arrey Building. 3-26c PINE WOOD CUT READY FOR stove. \$5 per load delivered. S. A. Ellis. 1f-14c I AM OFFERING SOME GOOD bargains in house paints and varnishes. C. C. Green. 4-20c CHURCH LETTERS FOR SALE at Star office. These letters are put up in books of 25 and 50 with stubs. 1f-29c IF YOUR TIRE GOES DOWN A. B. C. Tire Shop, Phone No. 280. 3-26c WANTED TWO UNFURNISHED rooms for light house keeping, located northeast of court house. Write Kendrick care of The Star. 2t-26p WHEN IN NEED OF OAK OR pine wood, ready for the stove, phone 338. M. D. Hopper and Son. 2-26p I PAY CASH FOR ROOSTERS, hens, fryers, turkeys, geese, ducks and guineas. C. C. Green, Shelby, N. C. 4-20c LOST DOG. LARGE, DARK brown, long ears, white on fore head, encircling neck also chest forefeet and tip of tail. Answers to "Ring" \$5.00 reward. V. A. Powell, Lawndale, or John McBrayer, Mooreboro. 2-26p FOR SALE—300 ACRE FARM in Cleveland county including equipment and five miles. Will sell for cash or terms, or will trade for stocks, bonds, good real estate paper or improved property in Shelby. For further information address R. R. c/o Cleveland Star 6-24c TWO FARMS FOR SALE at a bargain—One 3-acre farm five miles east of Lincolnton on sand-clay road. Seven-room house, new. Good outbuildings, good orchard. Can give terms. Near school and church. One 77-acre farm on state highway No. 27, Lincolnton-Charlotte, in the town of Iron Station, with seven-room house and good outbuildings. 150 yards of school. Three churches in village. A No. 1 farm. Can give terms. Write or see W. M. McConnell, Lincolnton, R. 3. 3t-28p SEVEN O'CLOCK Breakfast Coffee, fresh ground 25c a pound. Guaranteed Flour \$3.75, 24 lbs. 95c. Sugar, 10 pounds 75c, \$6.65 per hundred. C. H. Reinhardt, South Shelby. 2t-28c