

Not a chance conception ... but a deliberate plan ...



Chrysler's matching of slender-profile radiator with cowl bar moulding has its origin in the repetition of motif in the historic frieze of the ancient Parthenon.

Chrysler's New Style is Based on Authentic Canons of Classic Beauty

Chrysler engineering has achieved something never done before in motor car design.

It has searched out authentic forms of beauty which have come down the centuries unsurpassed and unchallenged and has translated them in terms of motor car beauty and motor car utility.

The lengths to which Chrysler designers have gone in this patient pursuit of beauty will doubtless prove a revelation to those who have probably accepted Chrysler symmetry and charm as fortunate but more or less accidental conceptions.

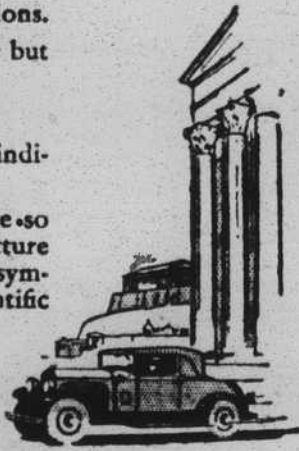
The Chrysler process goes far deeper than any charming but fortuitous design.

For, Chrysler has left nothing to chance.

Chrysler has not relied alone upon the inspiration of individual designers.

Chrysler in its newest products—has found that there are so many glorious precedents and inspirations in art, architecture and design, that the search for authentic and harmonious symmetry can actually be reduced to something like a scientific system in which results are certain.

New Chrysler "65"—Six body styles priced from \$1040 to \$1145
New Chrysler "75"—Nine body styles priced from \$1535 to \$2345
New Chrysler Imperial—Five custom styles priced from \$2675 to \$3475. All prices f.o.b. Detroit. (119)



New Model Cars For 1929 At N. Y. Automobile Show

(The new model cars for 1929 are now being shown at the New York show and a complete description of the various makes sold in Shelby will appear under this heading, one or two makes each issue until the full line is covered.)

Ford

Three entirely new Ford body types, town sedan, cabriolet and station wagon, are on display this week in the Ford showrooms at 1-710 Broadway. Also on display are a chauffeur driven town car, recently introduced and a new Ford taxicab.

The new town sedan's body is longer than any of the passenger cars in the Ford line, with three windows and four doors. The interior is roomy. The lines long, low and straight, emphasized by French roof quarters and belt molding, starting at the radiator and encircling the body. Doors are wide, driver's seat adjustable. The car is offered in various color combinations.

The cabriolet, with rumble seat, is a de luxe sport coupe. Windows are large, trimmed with nickel, and interior compartment is roomy. Top folds back and may be lowered so as not to interfere with the vision of passengers in the rumble seat.

The station wagon, longer, lower and roomier than previous Fords of this type, has removable seats for six besides the driver.

The new town car is the first

chauffeur-driver Ford ever offered and has the first custom-made body in the Ford line. The passenger compartment, insuring privacy behind a glass partition back of the chauffeur's seat, provides room for three passengers. The car is trimmed in English bedford cord and equipped with arm rests and compartments for mirror, note book and other personal articles. Triplex, shatter-proof glass is used.

Chevrolet

For the new year Chevrolet offers the new six-cylinder line introduced last November, including two open and five closed cars.

The closed styles are a coach, sedan, sport cabriolet, coupe and convertible landau. Open models are a roadster and phaeton.

The engine has a bore of 3 5/16 inches and stroke of 3 3/4 inches, and develops forty-six horsepower. Carburetor is larger than last year, cam shaft is newly designed with a fabric gear. There is a new acceleration pump for quicker get away, a new hot-spot manifold and new design combustion chamber.

Bodies are roomier, in various color combinations, on rigidly braced chassis of 107-inch wheelbase. The new radiator shell is chromium plated. Headlamps are fitted with chromium-plated rims and mounted on similarly plated standards. Upholstery is in mohair and corduroy. Standard equipment on the various models includes steel disc wheels, rear-view mirror, theft-proof lock, gasoline gauge and automatic windshield wiper.

Prices are: Coach \$596; coupe, \$595; sedan, \$675; sport cabriolet, \$695; convertible landau, \$725; roadster, \$528, and phaeton, \$525.

Oakland

Oakland's All-American Six line,

recently introduced, offers seven body types, as follows. Four-door sedan, convertible cabriolet, coupe, sport roadster, sport phaeton and a new convertible cabriolet and landaulet sedan. The two last named are introduced in the Oakland line for the first time in the 1929 models. Price range from \$1,145 to \$1,375. Bodies are by Fisher.

Rear seat of all five-passenger styles has been made two inches wider without increasing the tread, and all closed models have adjustable driver's seat, movable backward or forward.

Built on a 117-inch wheelbase, the new power plant develops sixty-eight horsepower at 3,000 revolutions per minute. Cylinder displacement is 228 cubic inches, increased from 212 cubic inches, by enlarging the bore to 3 3/8 inches from 3 1/4 inches. Stroke remains at 4 1/4 inches. The engine is L-head type, with a compression ratio of 4.9 to 1.

Radiator has a grill front with a higher shell. On the hood is a new louvre grouping in four sets of five each. Side cowl ventilators operate by foot control, and instrument dials are finished in black with white figures.

Bodies are of composite steel and wood construction, with arched windows. Standard equipment includes four Lovejoy hydraulic shock absorbers and fitted spring covers.

WOULD MAKE ALL CHURCH MEMBERS DRY INFORMERS

Providence, R. I.—A plan to make every Protestant church member in Rhode Island an active informer in the governmental prohibition enforcement system was adopted at the first annual Rhode Island State Citizenship Convention at the First Universalist church.

TRY STAR WANT ADS.

BOILING SPRINGS NEWS OF INTEREST

(Special to The Star.)

Boiling Springs, Jan. 15.—Mrs. Pink Lovelace of Greenville, S. C. arrived here Friday night. She was called home on account of the sudden death of her father, Mr. Sam McKee.

Miss Winifrey Hamrick of Charlotte spent the past week here with her home folks.

Dr. James H. McBrayer of Raleigh is spending several days at the home of his mother, Mrs. Ida McBrayer.

Miss Mabel Goode has been quite ill with influenza but is improving now.

Mrs. C. C. Goode returned from the Shelby hospital Saturday. She is getting along nicely.

Miss Jessie Henderson spent the past week-end with Mr. and Mrs. Earl Koon, of Shelby.

Mrs. W. T. Luckadoo of Cliffside is spending this week with Mrs. Addie Mae Greene.

The Tongues and Needles club will meet with Mrs. M. H. Walker Friday afternoon at 3:30 o'clock.

Mr. and Mrs. Arthur McClure and family of Gastonia spent Sunday here with Mr. and Mrs. J. R. Greene.

Mr. and Mrs. Ben Goforth of Kings Mountain visited Mr. and Mrs. V. H. Hamrick Sunday.

Mr. Frank Huff of Greenville, S. C. visited here Sunday.

Friends of Mr. and Mrs. Lucien Blanton sympathize with them in the loss of their baby which died Saturday. It was interred in the cemetery here Sunday afternoon at

2 o'clock.
Mr. and Mrs. V. H. Hamrick visited Mr. and Mrs. Trout near Forest City this past week.
Mr. Mack Cantrell of Boiling Springs, S. C. spent the week-end with friends at the college.
Mrs. T. G. Lee has recovered from a severe case of influenza and is able to be out again.
Miss Elizabeth Hamrick left Monday for Raleigh. She will resume her studies at Meredith college.
Dr. and Mrs. C. H. Harrill and Mr. Grady Lovelace of Shelby were visitors here Sunday.
Mr. and Mrs. R. Z. Hicks and family moved this week to Chesnee, S. C. We regret their leaving but wish for them much happiness in their new home.

\$1,500,000 HOSEYRY PLANT IS ACQUIRED BY CHARLOTTE

Charlotte, Jan. 14.—Selection of Charlotte as the site for a hoseyry manufacturing plant by an unnamed Pennsylvania concern was announced today by Harold D. Leslie, manager of the Charlotte industrial bureau. The name of the Pennsylvania concern was withheld at the request of officials, Leslie said.

The plant will represent an ultimate investment of \$1,500,000. A site in the city has already been purchased and construction of the plant is expected to begin March 1, Leslie explained.

The governor of Alaska's annual report urges that a survey be made to determine the location and extent of unexplored oil and gas fields along the Bering Sea, along the Alaskan peninsula and in the vicinity of the Aleutian Islands.

Try Star Want Ads.

CHRYSLER GEO. THOMPSON

The New BUICK

All that is Newest in Style & Performance .. plus the reliability that makes BUICK Supreme

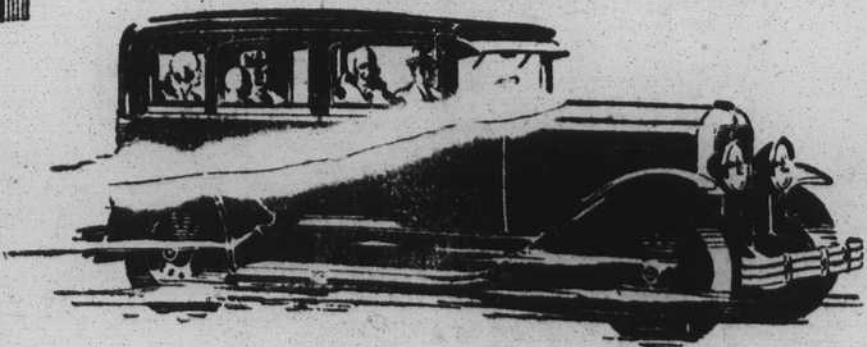
Coupe ... \$1195 to \$1875
Sedans ... \$1220 to \$2145
Sport Cars \$1225 to \$1550

These prices f.o.b. Buick Factory. Convenient terms can be arranged on the liberal G. M. A. C. Time Payment Plan.

Here are bodies of matchless distinction and charm . . . Here is the highest development of the famous Buick Valve-in-Head engine—the most powerful engine of its size in the world.

And here are new heights of that sterling reliability for which Buick has always been famous—a remarkable new chassis—assuring thousands upon thousands of miles of complete motoring satisfaction.

For the newest in style and performance—for utmost value—for the highest degree of stamina and reliability—the choice of the overwhelming majority of fine car buyers is this magnificent new Buick.

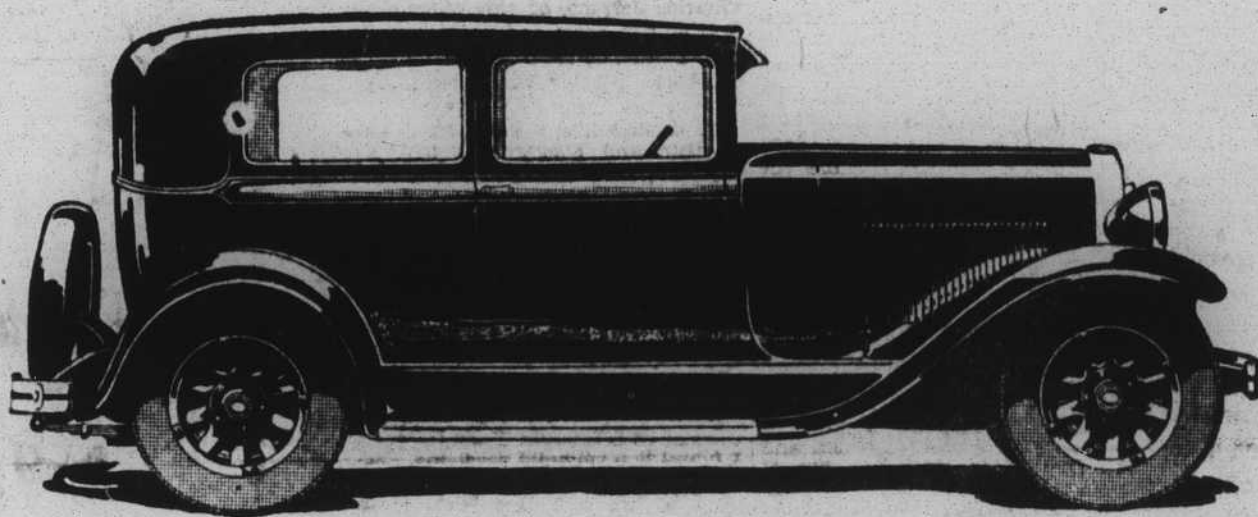


BUICK
WITH MASTERPIECE BODIES BY FISHER

J. LAWRENCE LACKEY
BUICK DEALER

WHEN BETTER AUTOMOBILES ARE BUILT... BUICK WILL BUILD THEM

READ THE STAR. IT NOW GOES INTO 4,700 HOMES EVERY OTHER DAY. \$2.50 A YEAR BY MAIL. FOUR WEEKS FOR A QUARTER BY CARRIER BOY.



Announcing OLDSMOBILE FOR 1929

Now—finer than ever, but at a new Lower Price

Oldsmobile now offers new engineering advancements that increase performance and dependability—new style refinements that result in even more vivid beauty and even more complete luxury . . . all at a substantial reduction in price!

Oldsmobile's big high-compression engine now delivers 62 horsepower. The piston pins are now pressure lubricated—an engineering feature heretofore characteristic of high-priced cars.

Interiors have been made more luxurious. Upholsteries are richer and more costly. Seat cushions are now deeper and softer.

Further, Oldsmobile has the wonderful new Fisher adjustable front seat, which may be moved instantly for-

ward or backward to the exact position desired, simply by turning the seat-regulator. This feature, together with Oldsmobile's adjustable steering wheel, provides a new order of comfort for the driver.

Style touches include headlamps of new design mounted on chromium-plated standards, a new cadet-type visor, and a unusual selection of voguish new exterior color combinations.

Come in and see this finer Oldsmobile. It is the product of one of the industry's pioneer manufacturers, backed by the vast resources of General Motors. And it offers a combination of beauty, luxury, comfort, performance and value which simply cannot be matched at Oldsmobile's new lower price.

NEW LOWER PRICE
TWO DOOR SEDAN

\$875

f.o.b. factory, Lansing, Michigan

SPARE TIRE AND BUMPERS EXTRA

OLDSMOBILE
PRODUCT OF GENERAL MOTORS

HAWKINS BROTHERS