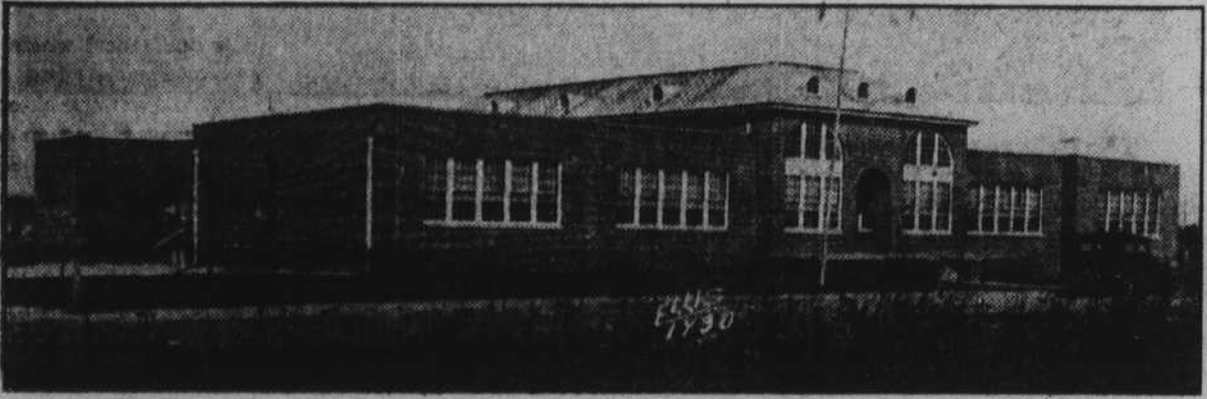


Graham School



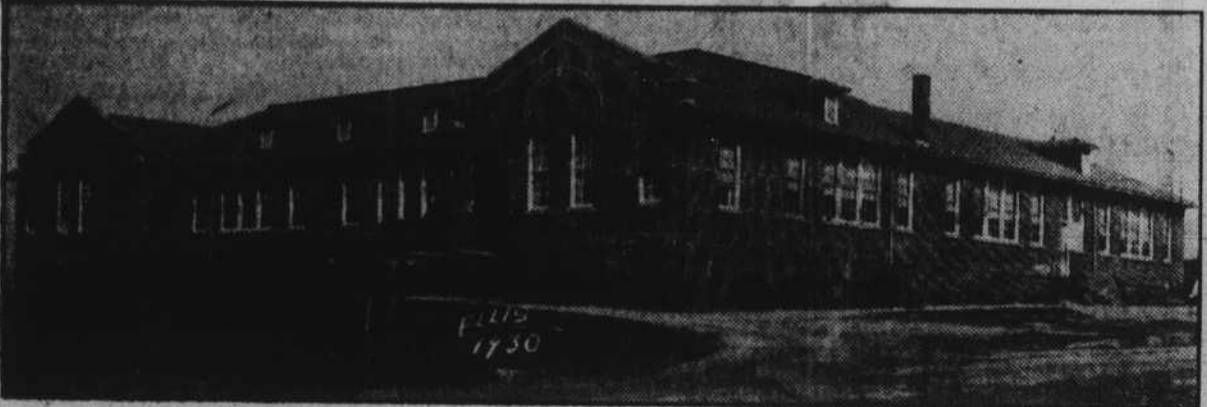
The Graham school was erected in 1926 at a cost of \$22,025. It has eight standard classrooms and an auditorium seating 320 persons.

South Shelby School



The South Shelby school was built in 1926 at a cost of \$60,137. It is the largest and best building in the Shelby system. In addition to housing the South Shelby Elementary pupils it takes care of the eighth grade, a Home Economics Department and the Teacher Training Department.

The Washington School



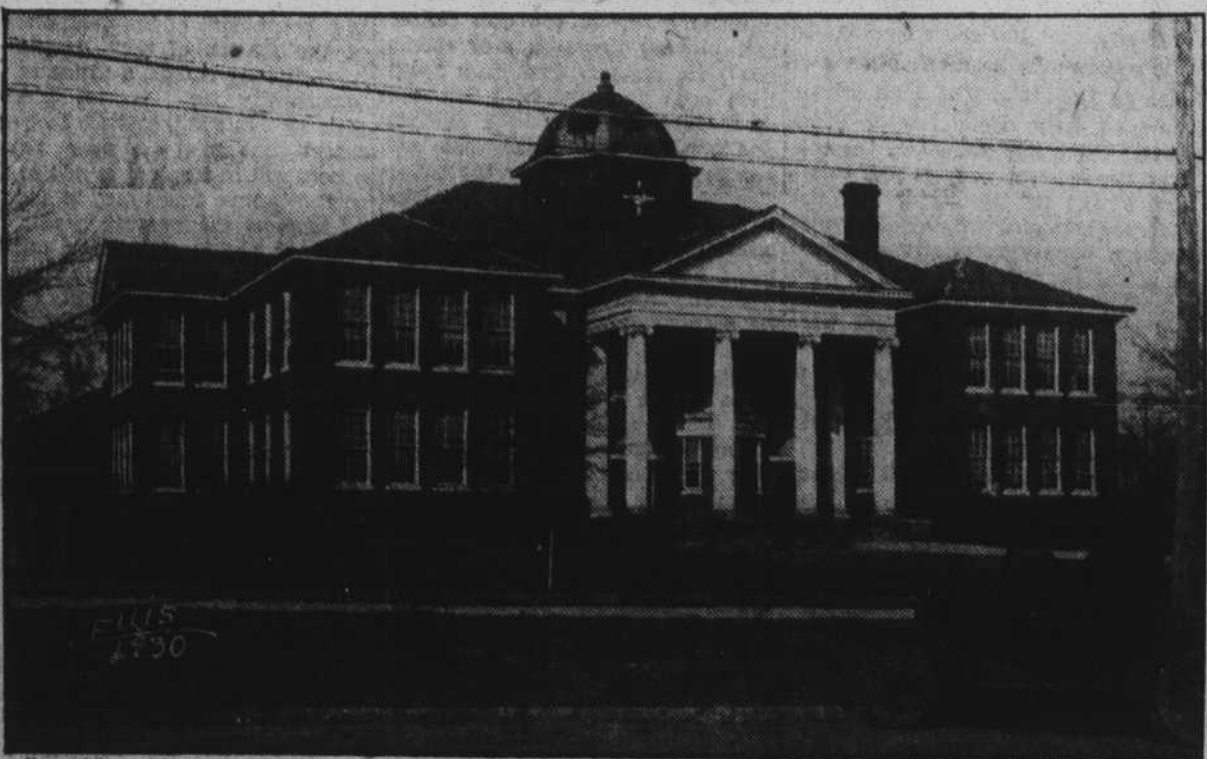
Erected in 1926. The cost was \$24,590. It has eight standard classrooms, offices, beautiful auditorium, etc.

The Jefferson School



Erected in 1926 at a cost of \$30,428. The same plan was used by which Marion and LaFayette schools were built in 1923 except that an auditorium has been added.

The Shelby High School Building



Erected in 1906 at a cost of \$30,000. At that time it was one of the finest buildings in the state. It is now inadequate and a proposal has been made to convert it into a junior high school and erected in its stead a modern high school plant.

TEACHERS OF COUNTY HAVE HIGH CLASS CERTIFICATES

The average class of teachers' certificates in rural Cleveland county is low as compared with most counties in North Carolina. Statistics compiled in the office of the county superintendent reveal that the average of all white teachers in the rural schools is a high school, gram-

mar grade, or primary "C" certificate. In many counties the average is between the "B" and "A" classes. In a few counties practically all teachers have "A" certificates.

AVERAGE TEACHER'S PAY IN RURAL SCHOOL IS \$106.40

The average white teacher's salary in the rural schools of

Cleveland county is \$106.40. This means the annual salary in a six months' school is \$638.40 or \$50.75 per calendar month. In an eight months' school the teacher's annual salary is \$51.30 or \$67.70 per month. Most teachers spend from \$100.00 to \$200.00 each year in summer schools to renew or raise their certificates.

Standardization Has Been Elementary School Aim In Five Of Shelby's Schools

The main object of five of the elementary schools, this year, has been standardization.

In order to meet the requirements set up by our state board of education a standard elementary school must have a seven year course of study including required subjects, a teaching staff with the proper kind of certificates, a school term of so many days, an attendance that is good and an average daily attendance not exceeding 40 pupils per teacher.

The equipment should include three sets of supplementary readers for each grade, a required number of maps, globes, reference books, dictionaries, special primary material, a working library of around five hundred volumes, permanent records, and an adequate sanitary building.

Besides the specified equipment each pupil should own all his required text books including music, writing and drawing.

Since the big purpose of meeting the demands for standardization is to render a larger service to our boys and girls by enabling the schools to do more effective teaching, patrons, teachers and pupils have put forth every effort to stand-

ardize. Donations from patrons, picture shows, musical teas, rummage sales, bazaars, subscriptions to magazines and the selling of candy and tarts are some of the means by which our various parent-teacher associations have realized nearly fourteen hundred dollars to buy approximately fifteen hundred library books and other needed equipment.

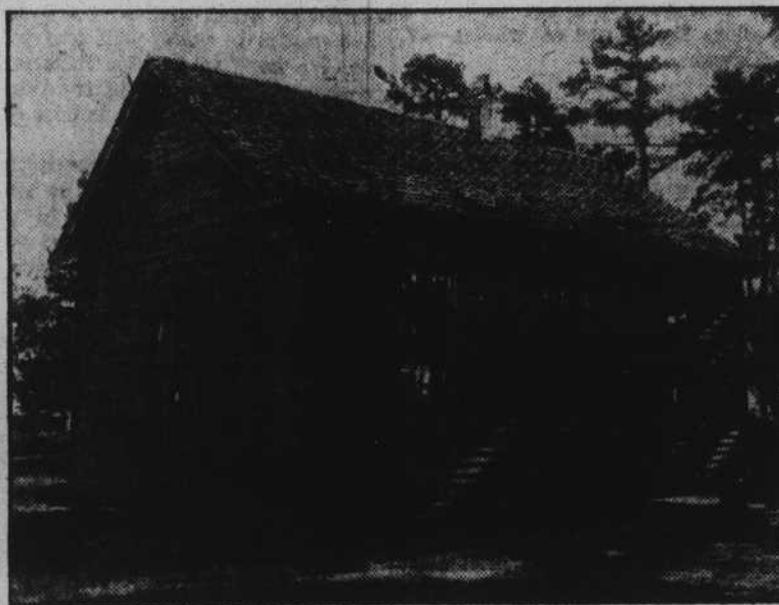
A personal gift of several hundred dollars worth of library books by Capt. B. L. Smith shows only in a small measure the active part that our superintendent has had in an effort to raise the standard of our schools.

Children unable to buy their text books have been helped by the county welfare officer and by generous hearted citizens and friends.

Two years ago the South Shelby school of which Miss Selma Webb is principal was placed on the standard elementary list of schools. This school at present is the only standard elementary school in the county.

However, in a few weeks when Misses Susan Fulghum, state inspector of schools visits us we hope to have the other schools on the accredited list.

Old Type Of School In Cleveland



The above photograph represents the type of school building, once quite frequently seen in Cleveland county, but now rapidly disappearing. However, in a few sections of the county a few of this type may still be found.

P-T Associations Are Strong Among Shelby Public Schools

Each Association Has For Its Aim The Standardization Of Schools In City.

At the beginning of this year's work the schools of Shelby met and organized a parent-teacher association. A mass meeting was held at the high school building with each school sending a representative to make a report. Also contributing one selection for the evening's program.

The meeting was a most beneficial one. The reports from the schools were good, and as each one gave their plans for the year every one became most enthusiastic.

It was decided that there would be two more such meetings during the year.

As an outgrowth of this meeting each elementary school organized a live parent-teacher association in their own district.

Each association has had as its one great aim the standardization of all the elementary schools.

For this they have raised money by various methods.

The libraries are becoming well stocked with books bought by the associations. Supplementary readers and general equipment of all kinds are being placed in the different grades.

Not only have the associations been alive in equipping the school rooms for standardization but they have given and planted shrubbery and blooming plants to beautify the grounds. Many pictures of noted artists have been given to the schools.

The officers of the Shelby public schools parent-teacher associations are as follows:

General officers, vice-pres. Miss Selma Webb; Sec. Mrs. J. A. Liles; historian, Miss Alpha Gettys; treas. Jack Palmer.

Jefferson school: pres. Mrs. Finney; vice-pres. Mrs. Cline; sec. Mrs. Cashing.

Washington school: pres. Mrs. R. L. Weathers; vice-pres. Miss Agnes McBrayer; sec. Mrs. Hugh Mauney; treas. Mrs. T. W. Hamrick.

LaFayette school: pres. Mrs. Everett Putnam; vice-pres. Mrs. Breward Hennessy; sec.-treas. Miss Jessie Meckie.

South Shelby: pres. Mr. L. B. Abernathy; 1st vice-pres. J. L. Jones; 2nd vice-pres. Miss Mary Hardy; sec. Miss Nora Cornwell, treas., Olive Moore.

Graham school: vice-pres. Mrs. Hudson Blanton; sec. Mrs. Oren Hamrick; treas. Miss Etelle Moses. Marion school: pres. Mrs. John

Schenck, Jr., vice-pres. Mrs. Frank Hoey; sec. Miss Lucy Hamrick; treas. Mrs. Harry Speck.



C. S. YOUNG

Wholesale groceryman. Appointed March, 1928, to fill the vacancy created by the death of Mr. W. D. Lackey. Residence Shelby.

County-Wide Exams Are On This Week

Approximately 600 Pupils Are Taking Examination. Promotion At Stake.

County-wide examinations for all seventh grade students of the rural schools are being held this week. Approximately six hundred pupils will take the examinations.

The examinations are mostly true-false, completion, and multiple choice types and cover rather completely the subjects of arithmetic, language, history, reading, civics, spelling, geography and health.

Promotion to the high school is dependent upon the achievement of satisfactory grades on these examinations.

The examinations were compiled by members of the state department of education and are given throughout the state.

The public debt will never be paid out of the income taxes of ignorant people.

The Fallston High School



This building was erected in 1926 at cost of \$29,000.00. There are nine class rooms and an auditorium provided with water, lights and steam heat. W. R. Gary is principal. With him are three other high school teachers and five elementary teachers.

The Kelly Clothing Co. BANKRUPT SALE GOES ON DAILY

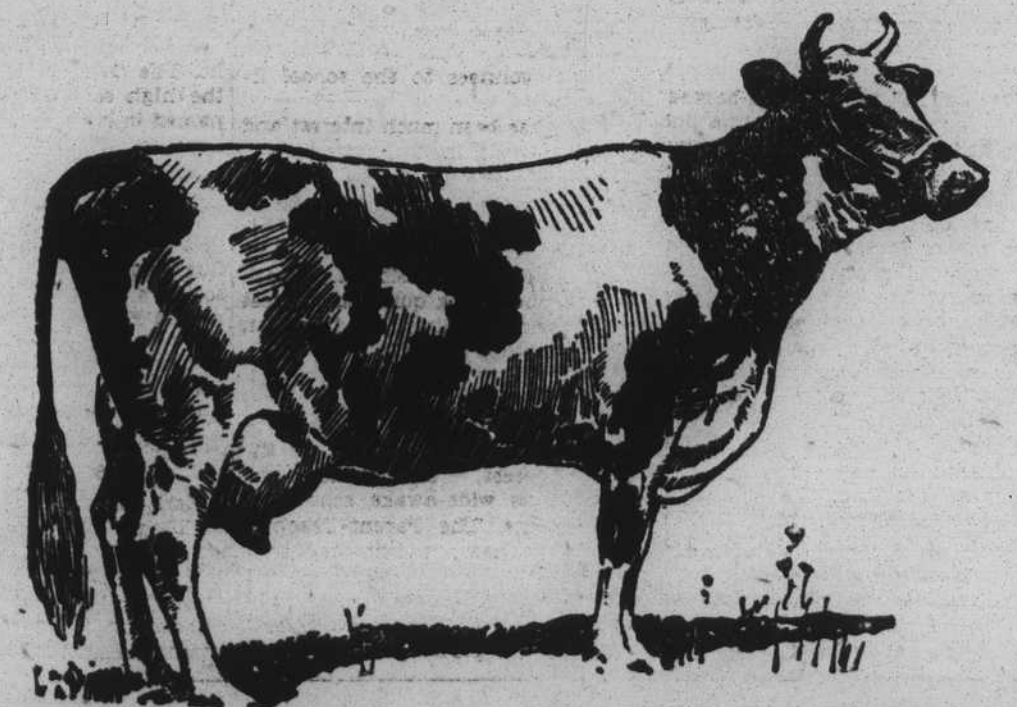
Griffon, Society Brand, Michael - Stern, as well as other standard lines of clothing, Schoble Hats and Caps, Manhattan Shirts, Pajamas and Underwear, SACRIFICED AT UNPRECEDENTED PRICES.

Don't Wait. Come Now GOOD SELECTIONS TO PICK FROM YET—

STOCK OF KELLY CLOTHING CO., On The SQUARE.

YOUR HEALTH DESERVES THE BEST THERE IS!

DAIRYING PAYS - IN HEALTH AND MONEY.



TO LIVE AT HOME

Encourage your father to have more and better cows. We always furnish a cash market for butter-fat and while you are looking for a career to follow, consider dairying.

Good cows enable one to live at home and be independent.

Shelby Creamery Co.

Makers Of The Celebrated Shelby Gilt Edge Butter Wm. LINEBERGER, Pres. & Treas.