

# HOME LOANS RUN TO FOUR MILLIONS

(Continued from page one)

paid out by the corporation to take over the mortgages on 50 homes. Of this amount, \$128,349.63 was issued in bond loans on 37 homes, while the remainder was in cash on 13 homes.

O'Neal said that approximately 1,000 cases were now in the hands of the corporation's lawyers in the various counties of the state for final legal work before the bonds and cash could be issued, and provided the attorneys in the various counties co-operated fully, most of these loans would be closed before the first of January and the mortgages taken over.

During the week, 286 applications for loans totaling \$749,400.28 were received. Thirty-two applications for a value of \$82,464.60 were rejected before the preliminary appraisal because they did not come within the law or for other reasons, while 129 applications with a value of \$384,000.09 were rejected after preliminary appraisal because of insufficient value for the type of loan desired. Nine applications with a value of \$2,373.39 were rejected after the second appraisal, while eight applications with a value of \$13,324.80 were withdrawn when other means of financing were arranged.

# 3,000 Farmers Hear Cotton Plans

(Continued from page one)

to the 13,000,000-bale crop we made and to that add the 11,500,000 bale carry-over, and we would have had a 28,000,000 or 29,000,000-bale crop. "Is there a man here who imagines a 29,000,000-bale crop would have moved in a market at even six cents a pound?"

Johnston urged the farmers to remain "unaffected" by prosperity and to continue their spirit of co-operation. He said that what has been accomplished was by voluntary methods and that there was a cry now to make it compulsory.

Oppose Compulsion He warned against compulsory methods, adding that hundreds of bills are introduced before congress next month, some of which would seek to compel performances by act of law.

"Such an act would mean the destruction of the independence of the American farmer," Johnston predicted. "It is up to you to indicate in the next 30 days your willingness to comply voluntarily."

Johnston said that the carry-over crop from last year was 11,500,000 bales. He estimated the consumption at 14,000,000 to 15,000,000 bales, which would give the world a carry-over crop of 10,000,000 bales.

"If we raise from 8,000,000 to 10,000,000 bales next year, the supply including the carry-over will be about 20,000,000 bales," he added. "If consumption reaches 15,000,000 bales next year, we shall have out the surplus to 5,000,000 bales."

He said the government's plan was to take about 15,000,000 acres of cotton producing land out of the market by renting the land from the owners.

# Bettis And Ellis Win Contest Honors

Special To The Star No. 3, Dec. 12.—Howard Bettis Vernia Ellis represented No. 3 High school at Mars Hill college Dec. 8-9 in the reader's and declaimer's contest. Both of these representatives did unusually well. Vernia Ellis the reader, won honorable mention, which honor placed her among the nine best readers out of the forty-two who represented the high schools of North Carolina. This is another honor which has come to No. 3 of which all the boys and girls are very proud.

How to make us spend more? Print the names of those who do. There's nothing Americans won't do for publicity.

# Penny Column

LOST IN BUSINESS SECTION His morning brown leather key holder containing several keys. Finder notify Miss Mary Hanna, Shelby Hospital. 11-13c

TRUSTEE'S SALE OF REAL ESTATE Under and by virtue of the authority contained in that certain deed of trust executed by P. O. Moore and wife, Corrie E. Moore, to the undersigned trustee, said deed of trust being dated April 7th, 1931 and recorded in the office of the register of deeds for Cleveland county, N. C., in Book No. 171 at page 42, securing an indebtedness therein described and default having been made in the payment of said indebtedness I will on

Saturday, January 13th, 1934 at 10 o'clock noon or within legal hours at the court house door in Shelby, N. C., sell to the highest bidder for cash at public auction that certain lot of land described as follows: Beginning at an iron stake near forks of road in a line between the John J. L. Smith's line thence with said line east 315 feet to a stone; thence a line N. 104° W. 105 feet to a stone; thence a new line S 80° degrees west 215 feet to a stone in the line of land sold by J. L. Smith to M. Wellmon; thence with said line S 80° degrees west 105 feet to an iron stake, the corner of the same being that same lot was conveyed to P. O. Moore by E. T. L. and wife and A. T. Bridges and

# PWA's Tennessee Valley Project Under Way



With work on the Tennessee Valley project, keystone of the Public Works program, being pushed forward, workers believe in strengthening their bridges before they cross them. Above, a bridge of ancient vintage, near Knoxville, Tenn., is undergoing rigid reconstruction to enable it to safely bear the heavy trucks going to and from Wheeler Dam site. At left, dredging barges are shown at work on the site of the dam that will be more than a mile long and will form a lake of more than 100 square miles.

# Second Hand Auto Code Is Now In Effect When You Go For Trade-In

Shopping Around Will Be Stopped. Dealers Deduct From 5 To 15 Percent For Reconditioning.

Shelby auto dealers have received their "Official Guides" on second-hand car allowance, paying \$35 for a little book which will slip in a man's coat pocket. When you approach a dealer to get an allowance on your trade-in, give the dealer a few minutes to take a look at his book alone. It is not for the car owner to see. Speaking of the second-hand code, Time News-magazine says:

"Up to last week when John Citizen decided to buy a new car, he would ask his dealer what allowance he would get on his old one. Armed with an offer, he would shop around among other dealers in the same price range until he got a higher bid. Back he would march to the first dealer, who, hating to lose a new-car sale, would be likely to boost his first offer. If John Citizen were shrewd, he could play one dealer off against another until he got an allowance far higher than his old car would ever bring

in the second-hand market. "To each and every automobile dealer in the U. S. last week went a fat little pocket manual to put a stop to this competitive method of price cutting. As an appendage of the automobile dealers' code under NRA, the manual listed the maximum trade-in allowance on every make and model of car. No dealer could offer a customer more without violating the code, risking punishment. The prices listed were compiled from nationwide second-hand sales by the National Automobile Dealers Association, which issues its Official Used Car Guide in prices each month.

"The U. S. is divided into 20 trade areas, and each has its own Official Guide. Used-car prices vary widely because of local preferences for makes and types. Transportation costs, added to the f.o.b. price, also influence the second-hand market. Thus the listed prices are actual market values in each area. In compiling the Official Guide each month the lowest 20 percent of reported sales are eliminated to keep the averages from being

weighed down by forced or junk sales.

"But no dealer may allow a customer the full price listed in the guide. He must deduct a charge for handling and reconditioning, ranging from 5 per cent to 15 percent depending upon the age of the car. The official guide price of a Ford cabriolet, 1930 model, in the New York area is \$210. The mandatory deduction (15%) fixes the maximum allowance to a customer at \$178.50. Other Guide prices in district No. 2 (five passenger sedans, 1930 models): Buick 30-57, \$425; Chevrolet, \$195; Chrysler 70, \$300; Franklin, \$700; Hudson Greater 8, \$265; La Salle \$375; Nash 480, \$375; Packard 7-26, \$600; Studebaker 8-FC, \$365.

"When a dealer subscribes to the Official Guide he promises not to divulge its listed prices for publication. The N. A. D. A. wants to give its members a chance to work off their trade-ins at a price higher than the average listed. But last week almost any dealer would tell a customer the listed price on a certain model on request. In the long run used car prices were expected to stabilize close to what consumers are sure to learn is the average in their trade areas.

"The consumer may not get so large an allowance under the code but he will at least get the benefit

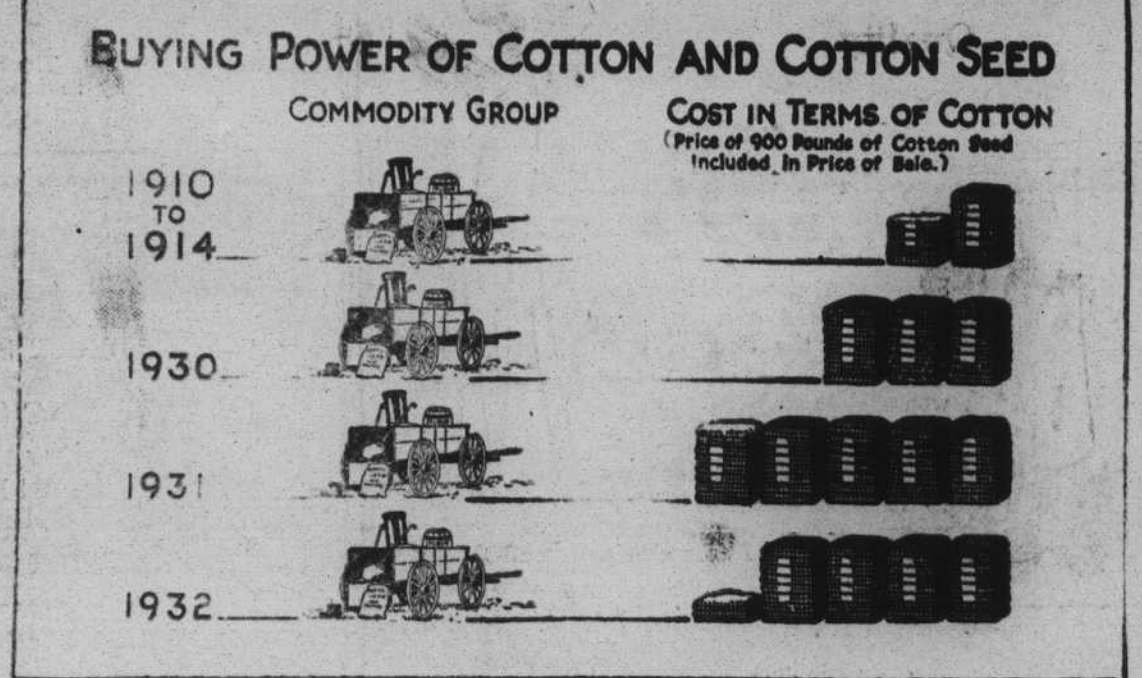
of strict provisions against misrepresentations. The unhappy buyer of a "doped" car can go straight to the district code administrator with his tale of a tampered speedometer, sawdust in the gears, ground cork in the differential."

NOTICE OF SALE Under and by virtue of the power of sale contained in a deed of trust given by Spence Curry and wife, Mollie Curry, to the undersigned, as trustee for the Bank of Grover, on the 31st day of March, 1929, registered in the register of deeds office for Cleveland county in book 123 at page 227, to secure the indebtedness therein mentioned and default having been made in the payment of the same and at the request of the holder of the note secured thereby, I will sell for cash at the court house door in Shelby, Cleveland county, North Carolina, on Monday, January 15, 1934, at 10 o'clock a. m. or within legal hours the following described real estate: Lying on the west side of the old York road, adjoining the lands of J. C. White and others; beginning on a stake on the edge of the York road, 30. L. Wood's old corner; thence south 83 1/2° poles to a stake in the road; thence north 83° poles to a stake; thence west 1/2° poles to a stake; Wood's line; thence south 38° east 6 poles to the beginning, and containing 90 poles, more or less. Also, lots Numbers 12 and 13 in block four, the same being just outside the corporate limits of the town of Grover, North Carolina, as shown in plats made by J. R. Edmond, C. E., for auction sale of the J. F. Jenkins property, and sold at public auction, August 18, 1929, said plat being on record in the register of deeds office for Cleveland county, in plat book 88 page 64, and for a fuller and better description of said property reference is made to said plat. This the 12th day of December, 1933. J. B. ELLIS, Trustee. J. R. Davis, Atty. 41 De 13c

# Seeing's Believing—There Is a Santa Claus!

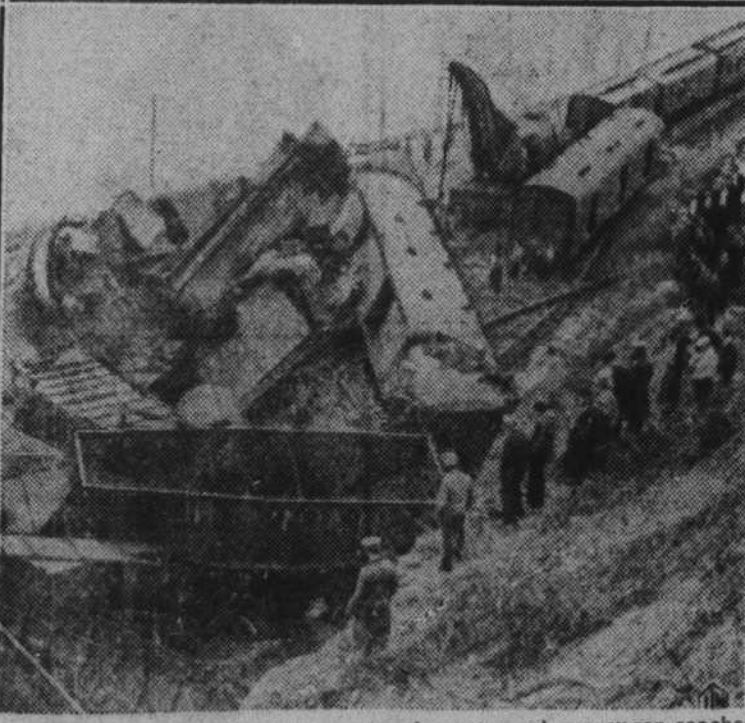


Life's biggest and brightest moment is enjoyed by this little girl at right as she gives Santa Claus explicit directions as to the gifts she would like for Christmas. At left happy kiddies are having a pre-taste of joys to come in the "Toyland" section of the store. This scene in a New York department store is being



THE articles that cost a farmer slightly over one and one-half bales of cotton in the period from 1910 to 1914, cost him three bales in 1932. The large crop of 1931 caused cotton prices to fall still lower, and in that year the farmer had to pay five bales of cotton for the same list of articles. Large surpluses increase the "disparity" between cotton prices and the prices of things the farmer buys. The way to restore the buying power of cotton is to eliminate the surplus. The Agricultural Adjustment Administration's program of production control provides a means to do this. Growers who cooperate with the Government will be helping to bring about the adjustments necessary to bring back the buying power of their crop.

# Train Wrecked by Landslide



This tangle of smashed freight cars and overturned passenger coaches resulted when a Richmond, Fredricksburg, Potomac passenger train plowed into a derailed freight engine near Quantico, Va. A landslide caused the wreck at in which two trainmen lost their lives. Miraculously no passengers were injured.

# Sponsor Sale For B. S. College Paper

The staff of The Kalaratheia, student newspaper, will sponsor on Friday afternoon, Dec. 15, the second of a series of sales which they are conducting in the interest of the paper. The sale will take place in the girls' dormitory and the hours will be 1 to 6 o'clock. A line of articles suitable for Christmas gifts and other novelties will be offered for sale. Of special interest will be several pieces of mountain home-spun art.

# Dr. Black Dies In Greenville, S. C.

Dr. Cliff Black, a native of this county, died at his home in Greenville, S. C., last night after an illness of more than a year. Dr. Black was 73 years of age. He is survived by his wife and three sons of Greenville, by two sisters, Mrs. J. A. Harrill of near Shelby, and Mrs. W. C. Laymon of Chattanooga, Tenn., and one brother, Tom Black, of near Kings Mountain. Dr. Hugh Black, another brother of the deceased, died less than two months ago at his home in Spartanburg, S. C.

## You Can Always Depend On COHEN'S

FOR THE RIGHT GOODS — AT THE RIGHT PRICES — AT RIGHT TIME. EVERY DAY FOR NOW UNTIL CHRISTMAS WILL BE

# WEDNESDAY

SPECIAL OFFERINGS IN EVERY DEPARTMENT

**EXTRA SPECIAL!**  
Just In Time For Christmas  
ONE SPECIAL GROUP  
**LADIES' TRAVEL TWEED DRESSES AND SUITS**  
Sold Last Week For \$3.95  
**SPECIAL THIS WEEK FOR \$1.99**

<b>New Fall Tweeds and Novelty Dress Goods</b> 5 Yards ..... <b>\$1</b>	<b>Boys and Girls UNION SUITS</b> 3 for ..... <b>\$1</b>	<b>Special Clean Up Boys' and Girl's SWEATERS</b> 2 For ..... <b>\$1</b>
<b>Extra Heavy Grade Yd. Wide OUTING</b> 10 Yards ..... <b>\$1</b>	<b>36-Inch LL SHEETING—Extra quality.</b> 12 Yards ..... <b>\$1</b>	<b>A real buy for Christmas CURTAIN MARQUISSETTE</b> 40-in. 8 yds. .... <b>\$1</b>
<b>Women's OXFORDS and TIES—Special</b> ..... <b>\$1</b>	<b>Men's and Boys' 2-Pocket WORK SHIRTS</b> 3 For ..... <b>\$1</b>	<b>Ladies' and Children's GALOSHES</b> All styles, heels .. <b>\$1</b>
<b>Fast Color DRESS PRINTS</b> 10 Yards ... <b>\$1</b>	<b>Extra Heavy Turkish Bath TOWELS</b> 4 For ..... <b>\$1</b>	<b>Special! Boy's Oil Skin SLICKERS</b> Less than today's wholesale cost. <b>\$1</b>