

Sand Dollar REALTY  
 OCEAN ISLE BEACH CAUSEWAY—579-7038

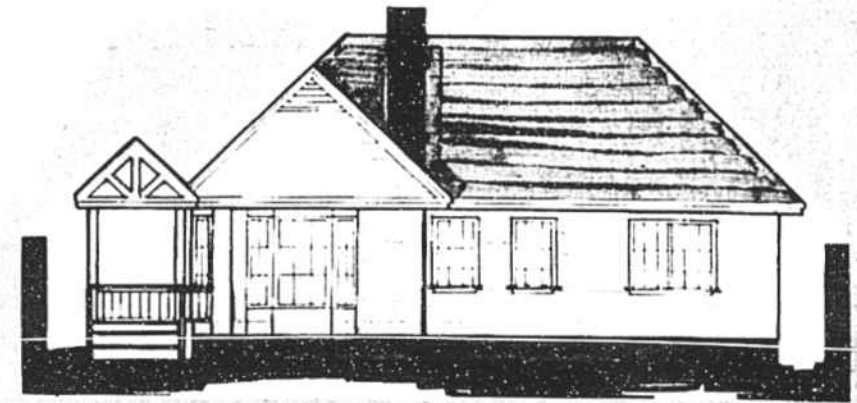
presents

# Greenwich Harbor

A restricted home development only two minutes from Shallotte on Copas Road, just beyond Copas Shores. Located conveniently to beaches, shopping, and schools.

Planned amenities include paved streets, street lights, concrete sidewalks, freshwater lake with covered bridge and water wheel, two-year paid golf membership, and jogging trails.

**Half-Acre Lots**  
**\$11,500 to**  
**\$20,000**



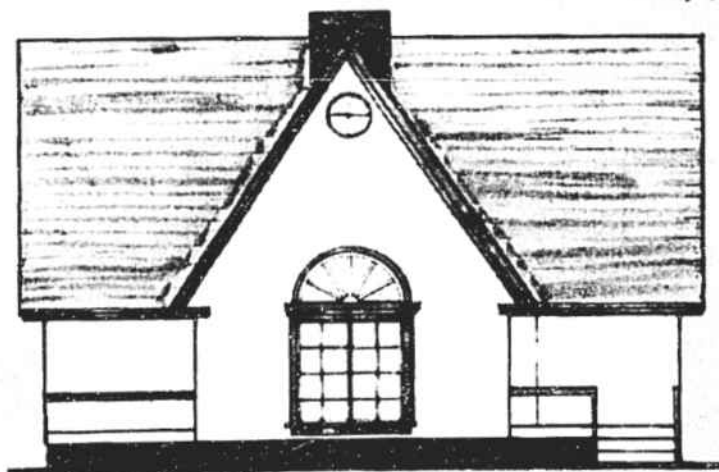
The Forester



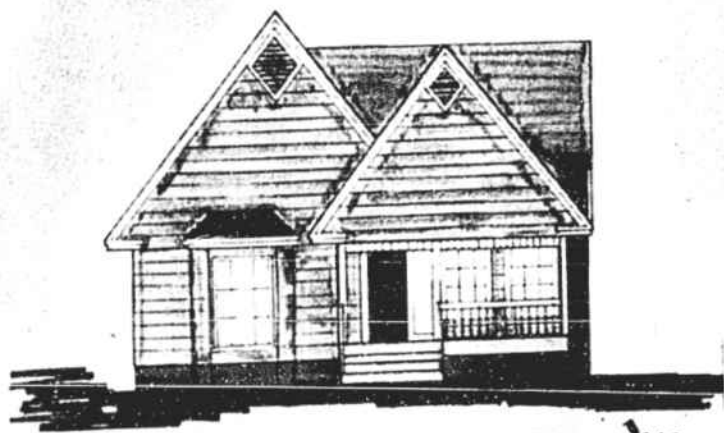
The Baron



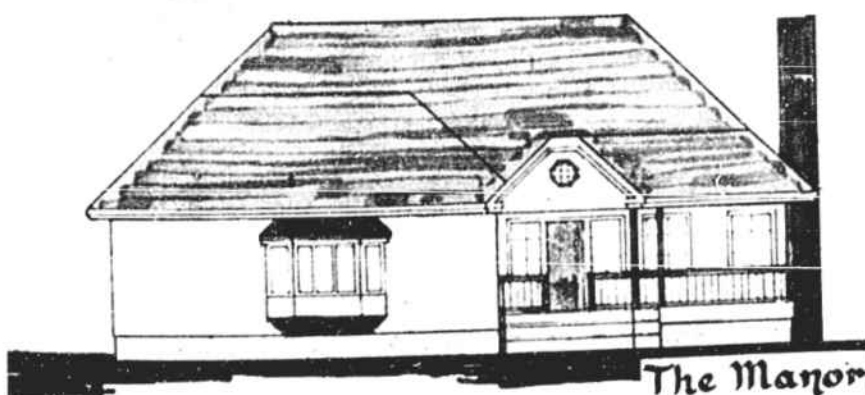
The Retreat



The Estate



The Villa



The Manor

©1987 THE BRUNSWICK BEACON

BROKER PARTICIPATION INVITED

## Standard Features of Homes:

- carpet, vinyl
- concrete driveways
- 6-panel colonial doors
- wood insulated windows
- attractive entrance doors
- crawl space construction
- pre-wired for TV and telephone
- brick and/or stone foundation walls
- appliances include washer and dryer
- choice of dark or light colored cabinets
- insulation meets or exceeds Duke Power or CP&L energy-efficient ratings
- much more

**With Home On Lot**  
**\$45,160**  
**to \$66,700**

