

JONES Ford, Chrysler, Plymouth, Dodge

754-4341 • HWY. 17 N., SHALLOTTE • OPEN MON-FRI 8-7:30, SAT. 9-4

It's Never Been Easier to Lease a Ford Taurus.

Ford cars and trucks are America's best-selling cars and trucks.¹ And right now, your Ford Dealer has special lease terms that make it easier than ever to get into one—including the award-winning Taurus. So if you're looking for a new car, you should know about the benefits of leasing through Ford Credit's Red Carpet Plan.

FORD CREDIT'S RED CARPET LEASE PLAN

To begin with, all it takes for qualified lessees to start leasing is a refundable security deposit (roughly equivalent to one month's payment) and the first month's payment. But that's just one of the

Lease A Taurus GL
For Only

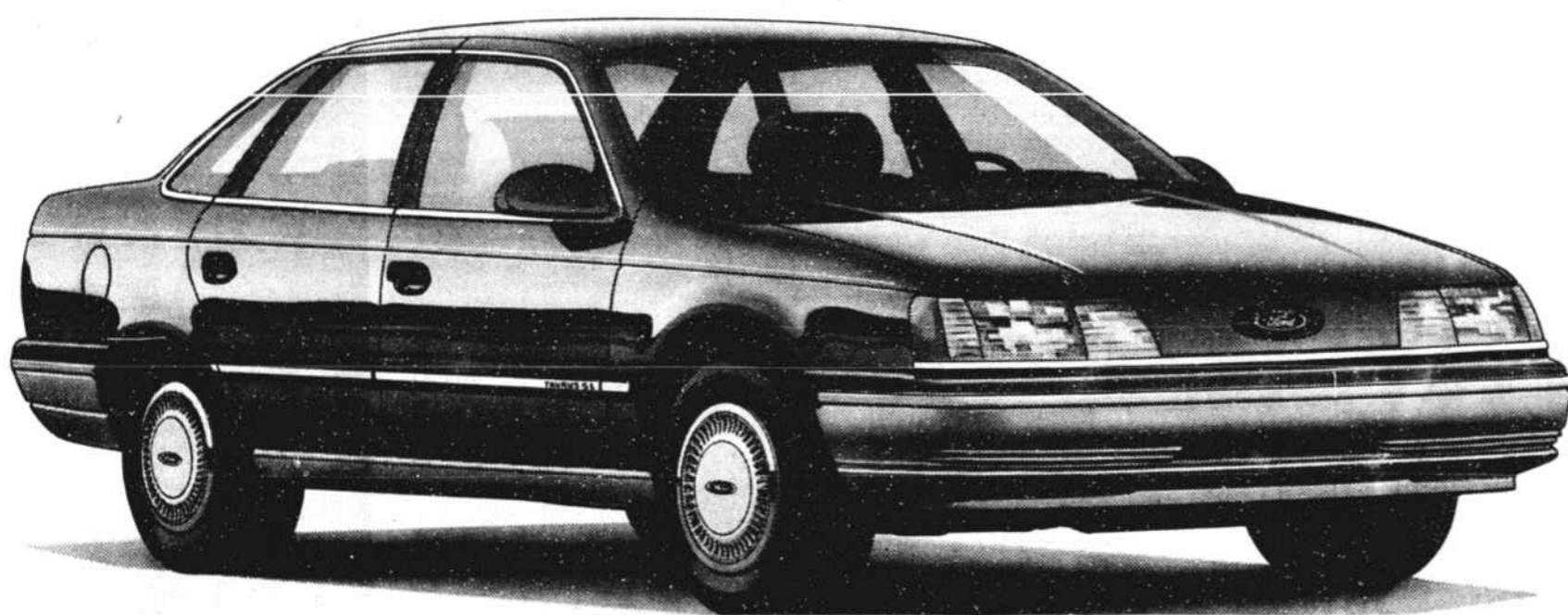
\$287⁹⁹

A Month³

advantages you'll enjoy. In addition, you may be able to afford more car than you could when buying. Here's why: you're paying only for what you use during the lease period—not for the full price of the car. As a result, your monthly lease payment may be the same as, or even lower than, a monthly purchase payment.

What happens when your lease ends? The choice is yours. You can simply walk away with no further obligation,² or you can purchase your car for a price you and your dealer arrange at lease inception.

Considering these benefits, a Red Carpet Lease could be just the opportunity you've been looking for. So see your dealer soon for complete details.



'89 Ford Taurus GL

Major Standard Equipment:

- Automatic Transaxle
- Interval Wipers
- Electronic Digital Clock
- Halogen Headlamps
- Dual Electric Remote-Control Mirrors
- Tinted Glass

Package 204A Equipment:

- Air Conditioning
- Speed Control
- Tilt Steering Wheel
- Power Locks and Windows
- 6-Way Power Driver's Seat
- Rear Window Defroster
- Electronic AM/FM Stereo Radio with Cassette
- And more

With Special Lease Terms Plus \$750 Cash Bonus⁴ on Taurus, the Choice is Yours:

- Apply the Cash to Your Refundable Security Deposit and First Month's Payment
- Use it to Reduce Your Ongoing Monthly Payments
- Use it for Other Purposes

Compare the Value of a 48-Month Red Carpet Lease.

	Escort LX	Tempo GL	Taurus GL	Thunderbird
Monthly Lease Payment ³	\$ 184.20	\$ 205.59	\$ 287.99	\$ 321.94
Cash Down Payment	0.00	0.00	0.00	0.00
Refundable Security Deposit	200.00	225.00	300.00	325.00
Total Cash Due at Lease Inception ⁵	\$ 384.20	\$ 430.59	\$ 587.99	\$ 646.94

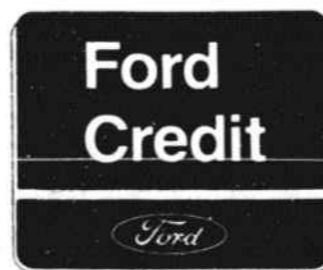
Total Amount of Payments	\$8,841.60	\$9,868.32	\$13,823.52	\$15,453.12
Total Mileage Allowed	60,000	60,000	60,000	60,000
Mileage Charge Over 60,000	.06 per mile	.06 per mile	.06 per mile	.06 per mile

AMOUNT OF CASH BONUS ⁴	\$750	\$750	\$750	\$1000
-----------------------------------	-------	-------	-------	--------

¹Based on 1989 model year manufacturers' reported retail deliveries by division through August 10.

²Provided wear and tear isn't excessive and mileage doesn't exceed contract allowance.

³Lease payment is based on Manufacturer's Suggested Retail Price including option package per model as shown below. Price includes destination charges but excludes title and taxes and is based on a 48-month closed end Red Carpet Lease from Ford Credit. Escort LX includes special value package 321A. Tempo GL includes special value package 226A. Taurus GL includes special value package 204A.



Thunderbird includes special value package 151B.

⁴Cash back directly from Ford on 1989 models with a 48-month Red Carpet Lease: \$750 on Taurus; \$750 on Escort; \$750 on Tempo; \$1000 on Thunderbird (excludes SC models). You may keep the cash or apply it to your lease. For cash back, you must take new-vehicle retail delivery from dealer stock. Dealer participation may affect customer savings. See your dealer for complete details.

⁵Cash due at lease inception includes a refundable security deposit and first month's lease payment.

**Your Local Ford Dealer Has Great Lease Deals
on Other Ford Cars and Trucks.**