

Holden Beach Won't Get Inlet's Sand This Time

Holden Beach's strand won't be bolstered with sand dredged from Lockwood Folly Inlet this year because the coveted material is being pumped to Long Beach instead.

However, the eastern end of Ocean Isle Beach will be reinforced with approximately 20,000 cubic yards of sand for the second year in a row.

Holden Beach was left out of this year's federal dredging and beach renourishment project because it is Long Beach's turn to receive the sand, said Barry Holliday, navigation branch chief with the U.S. Army Corps of Engineers in Wilmington.

"We usually alternate the disposal site, and this year it goes to Long Beach," he said last week. Holden Beach and Long Beach are on opposite sides of the Lockwood Folly Inlet.

A dredge boat pumped an estimated 200,000 cubic yards of sand onto the east end of Holden Beach last March. Most of that was washed away by Hurricane Hugo or earlier storms. Holliday said the Holden Beach strand will be renourished again next year.

As a result of erosion damage caused by the hurricane, Holliday noted that "both beaches really needed it (the sand) this year." But he pointed out that the 45,000 cubic yards of sand expected to be dredged from the inlet crossing is not enough to divide between the two

communities.

"If it was split between the two beaches, you wouldn't really notice a difference at either one," he said.

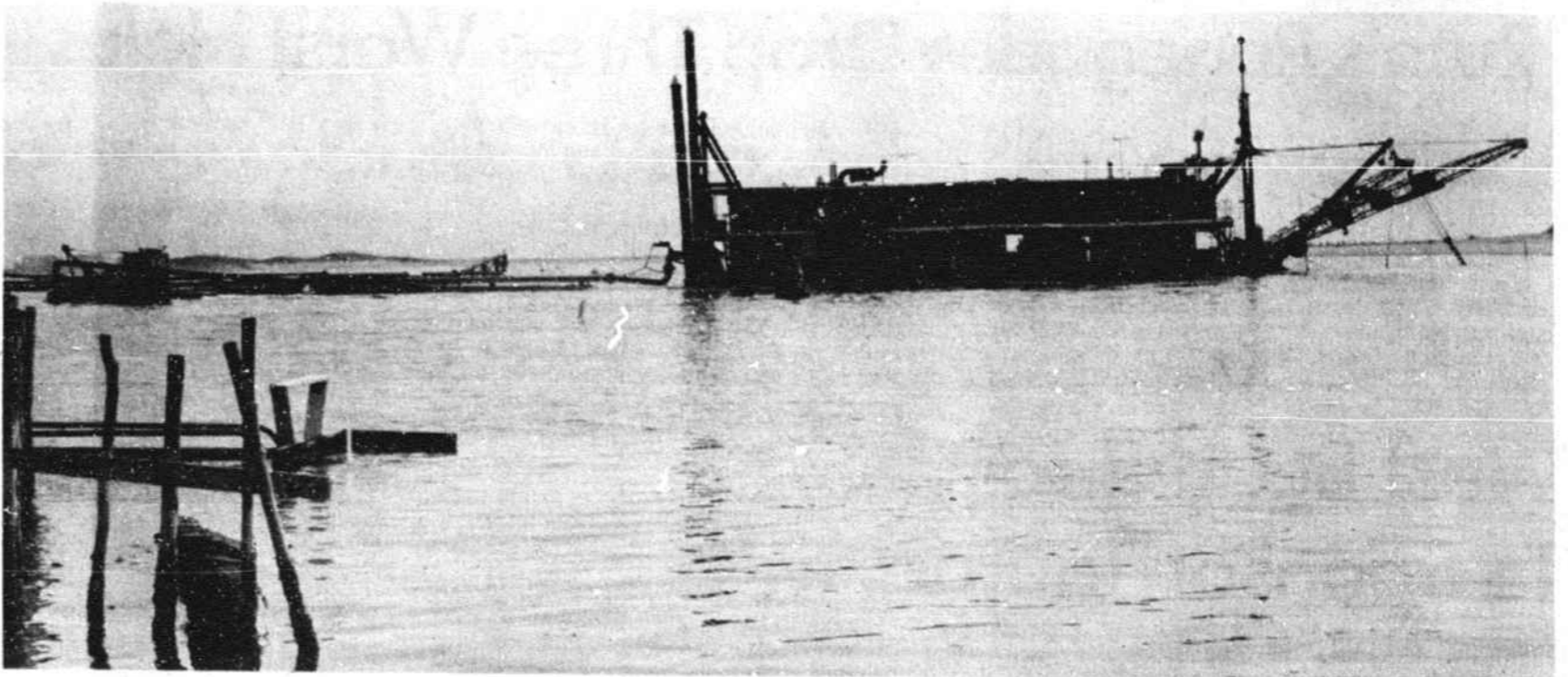
A dredge boat started pumping sand onto Long Beach about two weeks ago, said Holliday. The sand is being stockpiled at the west end of the beach, and the town will place it where it is needed most along the oceanfront.

Long Beach Town Manager Gary Britt said the sand will probably be hauled to the strand near the center of town. That area has experienced the worst erosion problems since last September's hurricane, he said.

Holliday said the dredge should move to the Shallotte Inlet crossing in another week or two and start pumping sand onto the strand at Ocean Isle. The sand will probably be dumped on the beach near Shallotte Boulevard, the same location as last year.

Both inlet crossings will be dredged within the designated limits of the channels. The dredge boat will remove any shoals that aren't at least 14 feet below mean low water.

Cottrell Engineering Company of Chesapeake, Va., is doing the dredging work in Brunswick County. The local work is part of a \$1.3 million federal waterway maintenance dredging project covering six sites from Shallotte Inlet to Bogue Inlet. Work at all but one of the locations includes beach renourishment.



A DREDGE BOAT pumps sand Saturday from the Lockwood Folly Inlet crossing to the western tip of Long Beach where it will be used to reinforce oceanfront dunes. Holden Beach will not be part of the federal dredging and beach renourishment project this year, but sand will be placed on the strand at Ocean Isle Beach later this month.

STAFF PHOTO BY DOUG RUTTER

The Law Firm
of
**MURCHISON, TAYLOR, KENDRICK,
GIBSON & DAVENPORT**
is pleased to announce that
NANCY M. GUYTON
and
REID G. HINSON
have become partners in the firm
and
JOHN L. COBLE
has joined the firm as an associate.
January 1, 1990
16 North Fifth Avenue
Wilmington, North Carolina 28401

Compare Hunter Douglas custom mini blinds...

NOBODY DOES IT BETTER!

Compare. And discover. Nothing comes close in quality, fashion, or durability to these custom mini-blinds!

Lovely to look at...in a wide color choice...only Hunter Douglas: slats are heat-treated and spring-tempered so they look great and are resilient and durable beyond all others. Compare. Be convinced. This is the best mini-blind around...by far!

HunterDouglas
Flexalume
Decor Blinds

FREE MEASUREMENTS
Patio Verticals as low as \$69.00
Mini Blinds • Micro Blinds
Vertical Blinds • Shutters
Pleated Shades • Wood Blinds
Small Accessories • Silk Flowers

Blinds 'n THINGS INC.
Park Plaza
1451C Hwy. 17S
N. Myrtle Beach
(803)272-1719

Sales • Service
Installation
RESIDENTIAL
COMMERCIAL
CONTRACT

\$10 Off Storewide Sale

Firm II Innerspring Sets

Twin \$99 ⁹⁵	Full \$109 ⁹⁵	Queen \$139 ⁹⁵
\$89 ⁹⁵	\$99 ⁹⁵	\$139 ⁹⁵

CHECKS & C.O.D.'S WELCOME

5% SENIOR CITIZEN AND STUDENT DISCOUNT

FREE BEDFRAME • FREE PILLOWS
FREE LOCAL DELIVERY
YOUR CHOICE WITH \$150 BED PURCHASE
4 DRAWER CHESTS \$49.95

NO SAG INNERSPRING
15 YEAR WARRANTY
EXTRA FIRM 312 COILS

ORTHOPEDIC BACK COMFORT SUPREME
20 YEAR WARRANTY

Twins...\$140.00 \$119.95 set
Full...\$140.00 \$139.95 set
Queen...\$170.00 \$169.95 set
King...\$260.00 \$259.95 set

Twins...\$140.00 \$139.95 set
Full...\$170.00 \$169.95 set
Queen...\$200.00 \$219.95 set
King...\$300.00 \$319.95 set

NOW AVAILABLE (\$10 Rebate on Purchase)
"Tiffany's Dream" Goose Down Mattresses

Factory MATTRESS Outlet

formerly R&R MATTRESS OUTLET
HWY. 17, SHALLOTTE
ACROSS FROM HARDEES
754-5727
Mon-Fri 9-5, Sat 9-4
CLOSED WEDNESDAYS

"SHALLOTTE'S #1 VOLUME DEALER" • "SHALLOTTE'S #1 VOLUME DEALER" • "SHALLOTTE'S #1 VOLUME DEALER" • "SHALLOTTE'S #1 VOLUME DEALER"

NOBODY SAVES YOU MORE!

Jones Ford • Chrysler • Plymouth • Dodge

754-4341 • HOURS: Mon-Fri 8-7:30, Sat 9-4 • HWY. 17 N., SHALLOTTE

BIGGEST REBATES EVER!

STRIKES BACK!!

WE CHALLENGE THE COMPETITION, CHEVY, NISSAN & MAZDA TO BEAT OUR HIGH REBATES & LOW PRICES
YOU ASKED FOR IT... YOU GOT IT! — VERY SPECIAL FINANCING

'89 FORD PROBE LX
4 cyl., OHC, automatic with overdrive, cruise, A/C, premium sound stereo with cassette.

Retail	\$14,018
JFD	1,718
Rebate	1,000
Plus tax & tags	\$12,300*

8.9%

APR

ON ALL NEW '89 AND '90 MODEL VEHICLES—SPECIAL APR PLUS JONES FORD DISCOUNT

'89 DODGE OMNI
Automatic, tinted glass, A/C, AM/FM cassette, conventional space tire, cloth interior.

Retail	\$9,249
JFD	750
Rebate	1,000
Plus tax & tags	\$7,499*

THURSDAY-FRIDAY, SATURDAY & MONDAY ONLY

15 '89'S STILL AVAILABLE AND MANY MORE '90'S TO CHOOSE FROM

NO DEALER PARTICIPATION!

SPECIAL INTEREST RATE WILL NOT AFFECT THE FINAL PRICE

*plus tax & tags
Special interest rate 8.9%

'89 FORD TEMPO GL
4 door, A/C, power locks, elec. mirrors, tilt wheel, rear window defogger, automatic, cruise, AM/FM cassette player.

Retail	\$11,043
JFD	1,243
Rebate	1,000
Plus tax & tags	\$8,800*

'89 DODGE DAKOTA S
Vinyl seats, 5 speed, 4 cyl., A/C, rear step bumper, AM/FM stereo, P/S, tailgate protector and stripe

Retail	\$9,322
JFD	822
Rebate	1,000
Plus tax & tags	\$7,500*

'89 FORD BRONCO II 4x4
XLT trim, A/C, tacometer, AM/FM cassette, luggage rack, spare tire, V6 engine, 5 speed manual

Retail	\$14,845
JFD	1,846
Rebate	1,000
Plus tax & tags	\$11,999*

'89 CHRYSLER NEW YORKER
Loaded! Tilt, cruise, power windows, locks & seats, AM/FM cassette player.

Retail	\$20,099
JFD	3,104
Rebate	1,000
Plus tax & tags	\$15,995*

"SHALLOTTE'S #1 VOLUME DEALER" • "SHALLOTTE'S #1 VOLUME DEALER" • "SHALLOTTE'S #1 VOLUME DEALER" • "SHALLOTTE'S #1 VOLUME DEALER"