

Brunswick Challenge Group Seeks Assistance With Poll

The Brunswick Challenge Committee, a countywide substance abuse concern group, has requested volunteer help in distributing an upcoming drug and alcohol survey to a cross-section of Brunswick County residents.

Committee Chairperson Jean P. Parker said the purpose of the survey is to provide accurate, factual and detailed local statistics on the nature and extent of substance abuse problems in the county. The voluntary poll also will measure public perception of what the "drug scene" really is in the local community.

The survey was developed by the committee, with input from representatives of Southeastern Mental Health, Youth and Family Counseling, and local law enforcement agencies, Ms. Parker said. Dr. Mark

Galizio, psychology professor at the University of North Carolina at Wilmington, serves as survey consultant.

"Hopefully, this survey data will allow us to develop a calm, objective understanding of what our citizens may be facing," Ms. Parker said. "Survey results will serve as the foundation for uniting community efforts to meet the challenge of providing drug-free communities."

She said assistance is needed to distribute copies of the survey to a cross-section of residents over 10 years of age in each local community. Civic organizations, church groups and individuals who are interested in helping with the project should contact Ms. Parker at (919) 287-9797 or write to The Brunswick Challenge Committee, P.O. Box 330, Supply, N.C. 28462.



PHOTO CONTRIBUTED

Two Comedies On Tap

In *Lone Star*, brothers Roy and Ray (Phil Losh and Joe Maggard) discuss life, love and their wives with wimpy newlywed Don Bland (center). The one-act play by James McClure and its companion piece from the wives' point of view, *Laundry and Bourbon*, will be presented in the round by Opera House Theatre Company March 21-25 at 8 p.m. at Thalian Hall, Chestnut Street, Wilmington. Due to the subject matter and language, the show is not recommended for children. Ticket information is available from Thalian Hall, 763-3398 or 343-3664.

Four To Attend Summer Program

Four Brunswick County students have been selected to attend Governor's School this summer for concentrated studies in the area of their choice.

Two students, Nancy McGee of West Brunswick High School and Samuel Kirby of South Brunswick High School, were selected to attend Governor's School West at Salem College, Winston-Salem, where they will study science.

Michal Burton of North Brunswick High School, a former Brunswick County Spelling Bee champion, will study English at Governor's School East at St. Andrew's College, Laurinburg. South Brunswick student Amelia Hawes of Bolivia will study instrumental music, also at East.

The residential program, which begins June 24, is offered by the

state at no charge to selected academically gifted students representing all 100 counties. Students must be rising sophomores or juniors to be considered for the honors program. In addition to their own academic concentration, participants are involved in a well-rounded curriculum aimed at developing creativity, higher-order thinking skills and leadership abilities.

The four local students were chosen by the state Department of Public Instruction from among outstanding students nominated by each high school, said Mary Wolfe, director of pupil personnel services. "We wish they all could have gone," she added.

©1990 THE BRUNSWICK BEACON



original figurines by Martha Holcombe



We also have for Easter...

Limited edition Easter Bunnies by Raikes featuring Vincent, Aunt Mary Lou, Vincent, Jr. and Betsy Ann

CARSON
CARDS & GIFTS
754-9968

Twin Creek (Food Lion) Plaza, Shallotte
BRIDAL & GIFT REGISTRY • FREE GIFT WRAPPING
LAYAWAY • WE PACK & SHIP UPS DAILY
HOURS: 10-6 MONDAY THRU SATURDAY



Place Your Orders Now
for our
Easter Bunny Custom-Made Basket Deliveries

Choose from cute plush toys, collectibles, gourmet goodies & more.

"Beary" Elegant

Sonrise Square, Sunset Beach, 579-5990



Colony Park

Strong grain patterns accent the medium-tone, hand-rubbed finish of Colony Park. Oak doors are matched with solid oak drawer fronts and cabinet face frames. Colony Park features matching toe kicks and end panels, adjustable wall cabinet shelves and self-closing hinges.

Aristokraft



Add storage versatility with optional roll-out trays. French door pantry has swing out and adjustable shelves

SEA COAST TRADING

754-6330
120 Blake St., Shallotte

Wayside INTERIORS

MARCH MADNESS SALE

Hurry while stock lasts!

Specials on Complete Living, Dining and Bedroom Packages

Complete line of quality wicker Rattan • Contemporary Furniture Lamps • Pictures • Accessories Window Treatments • Carpet

Complete custom decorating for your home or condominium.



•Financing Available
•Free Local Delivery

WAYSIDE INTERIORS
1-800-845-0819 • 1-803-449-3346
Open 9-5:30 Mon thru Sat

AUTHORIZED

KINGSDOWN MATTRESS GALLERY

HWY. 17 N. IN THE HEART OF RESTAURANT ROW NEXT TO SLUGS RIB • MYRTLE BEACH



WINDSOR CHAIR 5 PC. DINETTE SUITES
w/choice of FABRIC

6 groups to sell at
499⁵⁰

90 DAY GUARANTEE—MONEY BACK PLUS 20% IF YOU BUY SAME WICKER RATTAN FOR LESS ELSEWHERE



SLEEPER SOFAS

WINNERSPRING MATTRESS WITH MATCHING LOVESEAT

10 groups to sell at
799⁵⁰

RAMOS & LEWIS

ATTORNEYS AND COUNSELORS AT LAW

MEADOW SQUARE, HIGHWAY 179
SHALLOTTE, N.C. 28459

*Real Estate Transactions (Document Preparation, Title Examinations and Closings)
*Estate Planning and Administration (Preparation of Wills and Trusts)
*Domestic Matters (Divorce, Alimony, Child Custody and Support)
*Court Representation (Criminal, Civil and Traffic)

PREPARATION OF SIMPLE WARRANTY DEEDS \$25.00
PREPARATION OF SIMPLE WILLS \$60.00
UNCONTESTED DIVORCE \$150.00 plus court costs
PREPARATION OF SIMPLE SEPARATION AGREEMENTS \$195.00
Telephone: 754-7557

©1990 THE BRUNSWICK BEACON

Announcing Our Newest Addition!

Kaitlin Mary Bellamy
Born
March 17, 1990

8 pounds, 9½ ounces
21 inches long



To Celebrate,
Kimball's Pottery & Linen
now carries
Dundee
"we're soft on babies"
Baby Linens

Kimball's Pottery & Linen Outlet

Hwy. 17 N., Shallotte, 754-7940

"Brand Names At Discount Prices"

Spring Maid • Pfaltzgraff • Oneida • Crossill • Regal Cookware

©1990 THE BRUNSWICK BEACON

Spring Enrollment Up Over Year Ago

Spring quarter enrollment at Brunswick Community College is up slightly over enrollment a year ago.

David Ware, public information intern, said Tuesday that 540 students had enrolled for classes for the quarter that began last week. Another 10 or more late enrollees are expected in an electronics program offered at DuPont's Cape Fear plant in Leland, and in the BCC nursing education program.

"I think they're more than pleased with that," said Ware of the student turn-out.

Estimates on the average course-load for which students enrolled was not available.

Registration during spring quarter of 1989 ran approximately 527, said Ware.

The number of students enrolled each quarter and their course-load are used to compute FTE's, or full-time equivalent curriculum students, a figure used in determining funding for the school during the next academic year.

Affordable



Also selling new & used Pontiacs, Buicks, Chryslers, Plymouths & Dodge Trucks at **Rick Edwards** Downtown Whiteville Award-Winning Service Dept.



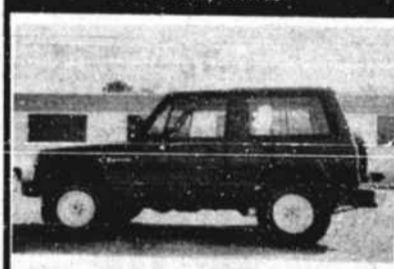
'89 PONTIAC GRAND AM LE
2 door, burgundy



'89 PONTIAC SUNBIRD
2 door, blue



'87 PONTIAC LEMANS
2-door, white



'87 MAZDA RAIDER
blue



'87 MAZDA SE-5
grey



'88 FORD RANGER XLT
blue and silver



'87 CHEVROLET CAMARO
V-6, 2 door, silver



Let our staff help you find the car you want!

Hwy. 17 N., Shallotte 754-9909