

## Lightning Blamed For Fire Damage To Hawes Residence

Lightning was blamed for a fire Monday that caused an estimated \$25,000 damage to the N.C. 130 home of Liston and Ruby Hawes of Ash.

The couple watched from their yard with friends and family members as firefighters worked in the rain to extinguish the smoldering fire that began under the eaves of the two-story frame house.

Mrs. Hawes, who staffs the N.C. Forest Service Fire Tower at Shallotte approximately a mile east of the house, was at home when the fire started.

In the midst of a thunderstorm moving through the area Mrs. Hawes said she had heard a sharp crack of lightning. Fearing the worst, she had gone upstairs to check for damage, she said, adding, "I didn't see anything."

It wasn't long after, however, when passers by called the fire to her attention. Among those to stop were Brunswick Electric Membership Corp. employees Wendall Ray Evans and Pat Long of Ash.

Hawes, a lieutenant in charge of the civil section of the Brunswick County Sheriff's Department, said he had called and talked with his wife "not 10 minutes before" he was notified of the fire.

Brunswick County Fire Marshal Cecil Logan said a bolt of lightning apparently struck the television antenna mounted on the house, ran

down the chimney and "jumped through the side of the house" at the roof line.

He estimated damage to the structure at \$25,000. Logan said the roof of the house must be replaced. The fire gutted one of the two upstairs bedrooms while the other received extensive damage from heat and smoke. The downstairs areas also sustained extensive damage from smoke and water.

Waccamaw and Shallotte volunteer fire departments responded to the 10 a.m. call and remained on the scene until mid-day. Firefighters from several other departments, including Shallotte Point and Supply, also assisted.

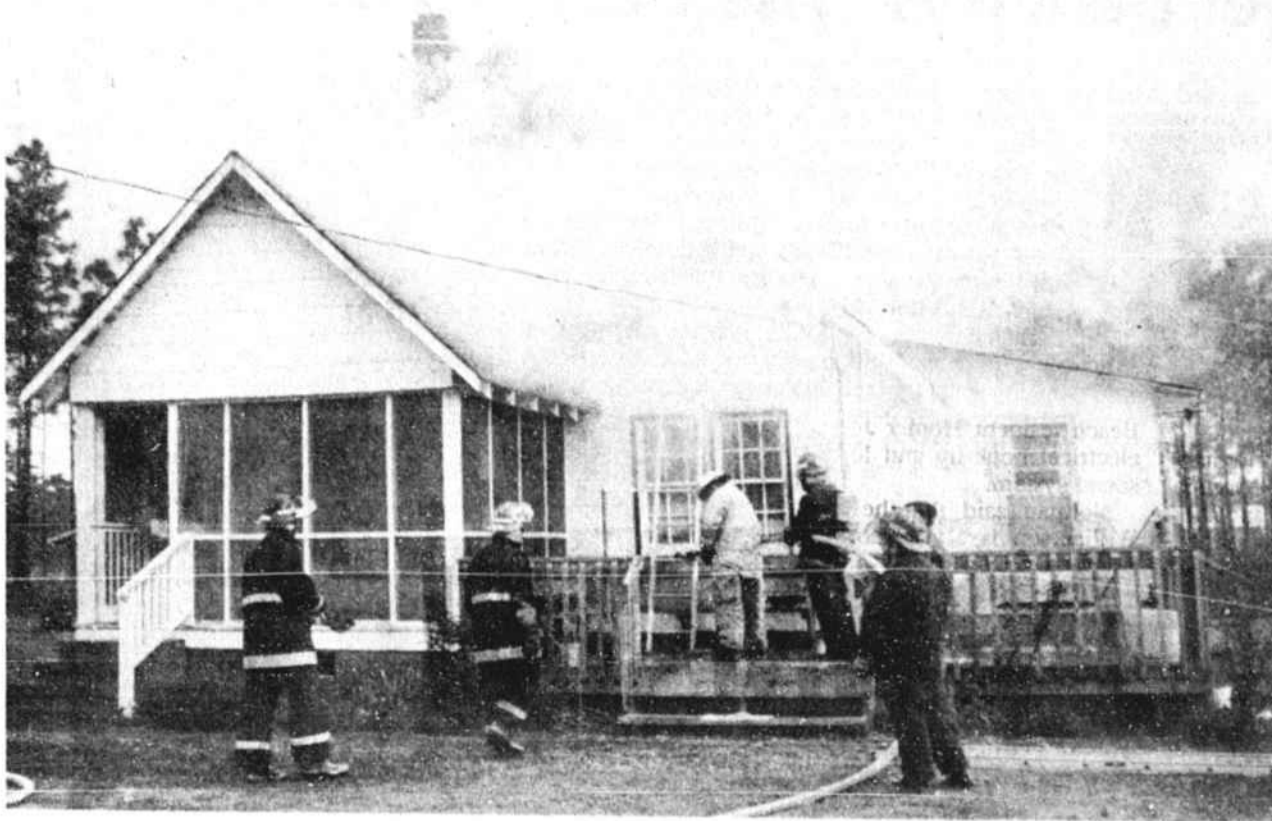
### Mobile Home Burns

Elsewhere, a Winnabow area mobile home was destroyed in an accidental fire last Thursday afternoon.

According to Logan, Winnabow and Bolivia volunteer firefighters were called to the Jeretta Lewis residence on Benson Road last Thursday at 3:30 p.m. Ms. Lewis was home alone at the time of the blaze.

The fire marshal said Ms. Lewis reported the fire after she discovered a section of wall burning near an electrical outlet behind her washing machine. Logan added that the blaze apparently was caused by an electrical short in the trailer's wiring.

No one was hurt in either fire.



FIREFIGHTERS from Shallotte and Waccamaw teamed up Monday to tackle a fire at the Liston Hawes residence at Ash that was apparently started by a lightning strike.

## Pilkey Rates Barrier Islands

(Continued From Page 1-A)

tour—entitled "Recovering from Hugo: Preparing for Hilda"—was conducted by Pilkey and other staff members with the Duke geology department's Program for the Study of Developed Shorelines. Other scheduled stops on the northward trip were Pawleys Island, S.C., Myrtle Beach, S.C., and Topsail Island.

Pilkey said he and Miller rated the 25 barrier islands as if the two men were advising their own parents about the safety of various communities. "If our parents asked us where to retire on the North Carolina coast, we would first recommend not living on an island," Pilkey stated in a news release that accompanied the rating list, "but if they insisted on living on an island, we would give them the information we used to rank these islands."

"Our purpose in doing this ranking is to educate people as to the dangers on barrier islands and thereby save property and lives," Pilkey added. He and Miller stressed that the rankings are subjective and also will change over time.

Miller also noted that the rankings were drawn from an investment standpoint rather than a completely environmental approach. "From an environmental standpoint, preservation of the beautiful barrier island environments for the future generations is best served by no development at all," Miller said.

Rankings were based on the four following qualities: natural characteristics of the island, quality of management, anticipated development and physical changes, and po-

tential danger to people. In each of the four categories, the highest possible score is four and the lowest is zero.

Sunset Beach's total score was 12, receiving high scores across the board but particularly in the areas of natural characteristics and quality of management. According to Pilkey and Miller, Sunset Beach is the only island in the state that continues to accumulate sand, rather than erode. Also, development on the island is located well beyond a wide expanse of dunes.

The two men noted that Sunset suffered very little damage from last September's Hurricane Hugo, while islands to the south and north suffered what they described as extensive damage. "(Sunset Beach) lost a lot of dune during Hurricane Hugo, but that's exactly what dunes are supposed to do," Pilkey said. "They are supposed to disappear in storms and then hopefully they will come back in later years."

Total scores for Brunswick County's other barrier islands were: Long Beach and Bald Head Island, eight points; Holden Beach, seven points; and Ocean Isle Beach, five points. Pender County's North Topsail Shores was ranked 25th with a total score of one point.

In the news release, Pilkey said Holden Beach, Ocean Isle Beach and other beaches low on the list rated poorly because "all of these communities are built on low elevations and have small dunes. The town government on these islands also is largely controlled by developers because so few of the home-

owners are local residents," Pilkey said.

He added that none of the 25 islands received a high rating for safety to people, because any barrier island can be completely devastated during a major storm. However, Pilkey noted, "Development on North Carolina's barrier islands is light compared to, say, Florida. And we don't have anything like Myrtle Beach."

Last December the National Academy of Sciences completed a 17-month review of the National Flood Insurance Program, which underwrites and subsidizes with tax dollars property insurance for properties located within flood plains. Its major conclusion was that the program's managers have inadequately informed the public about coastal erosion, its causes and potentially devastating impact on development. "A more informed or educated public—including buyers, sellers, developers, planners, engineers and public officials—would be able to make better long-term coastal development decisions," the 143-page report indicated.

## Wet Weather To Continue

Cooler than normal temperatures and above average rainfall are on tap in the Shallotte area over the next several days, according to Shallotte Point meteorologist Jackson Canady.

Temperatures through the weekend are expected to average from the mid-40s at night to the mid-60s during the day. Precipitation should measure more than three-quarters of an inch.

For the period of March 27 through April 2, the daily average temperature in the Shallotte area was 61 degrees, which Canady said was three degrees above average.

The daily average high temperature was 68 degrees, and the nightly average low temperature was 54 degrees.

The maximum high temperature during the period was 73 degrees on April 1. The minimum low temperature was 48 degrees on March 27, 28 and 30.

Canady measured 3.53 inches of rain during the seven-day period. He noted that a seasonable rainfall amount would have been approximately three-quarters of an inch.

## Sunset Accepts Lot Owner's Offer Of New Parking Space

Additional public parking soon will be available to beach goers and surf fishermen at Sunset Beach.

Town Council voted unanimously Monday to accept an offer to lease an oceanfront lot just west of Sunset Beach Pier from property owner Leroy Lindsey, said Mayor Mason Barber.

Prior to the board's March meeting, Lindsey advised the town that he has no plans to develop the lot during his lifetime. He said he was willing to lease the property to Sunset Beach if the town would pay town and county taxes on the lot.

Barber said property taxes on the lot amount to approximately \$1,100. He added that the lot should accommodate approximately 50 vehicles.

In another matter, the council decided to seek state legislation which would enable the town to assess property owners for installation of underground wiring.

The mayor said board members

unanimously approved a resolution to ask State Rep. E. David Redwine to introduce the local bill to allow assessments for underground installation of telephone, electrical and cable television lines.

Redwine is expected to introduce the legislation in the N.C. General Assembly's June short session. If approved, Town Council would hold public hearings to gather public input on the project, Barber indicated.

Also, the mayor said the town board concurred with the N.C. Department of Transportation's plan to leave the town's water line buried beneath the Intracoastal Waterway, rather than have utility crossings added to the design of the island's proposed new high-rise bridge.

Barber said DOT has agreed to lower the water line along the portion of the island causeway that will be reverted to wetlands after the new bridge is constructed.

## Officials Express Concerns

(Continued From Page 1-A)

While the visit yielded no official results, the DOT representatives assured Clegg, Pinkerton and Harvey that Brunswick County will have a "substantive voice" on a transportation steering committee that will be formed to study alternative routes for the proposed Wilmington bypass.

At a March 9 work session in Bolivia, county commissioners authorized the local delegation to set up the Ra

leigh meeting, after Harvey brought the board up to date on the TAC's recent actions. Harvey served as Brunswick County's member on the advisory committee until he was replaced by Ms. Beasley earlier this year.

The committee voted March 1 to propose extending its planning boundaries farther south in Brunswick County. The last extension occurred in 1982, when the boundaries were redrawn to include the Leland area. The proposed new

boundary line crosses U.S. 17 near N.C. 87, then extends southeast to Town Creek and follows the tributary to the Cape Fear River.

Clegg said Monday that formal extension of the planning area boundaries will be considered at today's TAC meeting.

Despite local opposition, the committee also continues to plan for the Northern Outer Loop's route to be built through the hearts of Navassa and Leland. The Wilmington bypass, which is part of a 14-year highway improvements package, will connect Interstate 40 in New Hanover County to U.S. 17 in Brunswick County.

Until the committee changed the route several months ago, the bypass was expected to loop northwest of Navassa and Leland through largely undeveloped areas before turning south toward U.S. 17. Harvey said DOT has begun an environmental impact study of the proposed new route.

## Vet Drops Appeal

(Continued From Page 1-A)

board's legal counsel had not yet scheduled an expected hearing in Neal's case.

The executive secretary indicated that the status of Neal's veterinary license remains unchanged and that he may continue practicing veterinary medicine in North Carolina until board action, if any, is taken. "It can't be revoked without a hearing," Zweigart said of Neal's license.

Neal could not be reached for comment on his decision to end the appeal or on the clinic's move to the Little River area. An announcement on a telephone answering machine at his Calabash office stated

Friday that the animal hospital was still in operation and that a new veterinarian had joined the staff.

A different message Monday announced that Neal's office had moved to Graystone Plaza, which is located on U.S. 17 just south of the state line near Little River. Both announcements were in Neal's voice. No Little River telephone listing for Neal was available Tuesday.

Neal was arrested Jan. 31 on the animal cruelty charges following a month-long investigation by Brunswick County Animal Control. He was accused and convicted of beating two cats and two dogs at Calabash Animal Hospital on separate occasions between Nov. 7, 1988, and Jan. 4.

## Roadwork Funds On Board Agenda

Several routine items relating to Brunswick County roads will be considered when the State Board of Transportation meets Friday at Duck, at the Sanderling Inn Convention Center.

Board members will be asked to approve these items, according to the published agenda:

—Allocation of an additional \$100,000 to supplement the \$500,000 already approved for preliminary engineering, right of way and utilities on U.S. 17 from N.C. 211 north of Supply to N.C. 87 at Bell Swamp Creek. The length of the four-laning project is 13.66 miles.

—Allocation of \$31,000 to construct an access road to serve the new Victaulic Company of America plant now locating in the Leland Industrial Park. The company will begin operations with 30 employees, expanding to 100 people in three years. The road will later be extended to serve Exide Electronics, which is now under construction.

—To reflect participation by Brunswick County, reduction of \$2,010 from the \$2.76 million approved earlier for construction on U.S. 17 from N.C. 211 northwest to southwest of S.R. 1401, a distance of 1.72 miles

—An increase of \$648 to complete construction of S.R. 1825, involving grading, draining and stabilization.

Items on the board's agenda usually meet with routine approval.

Tommy Pollard of Jacksonville represents Brunswick County and other counties in Division 3 on the board.

### THE BRUNSWICK BEACON

Established Nov. 1, 1962  
Telephone 754-6890  
Published Every Thursday  
At 4709 Main Street  
Shallotte, N.C. 28459  
**SUBSCRIPTION RATES**  
IN BRUNSWICK COUNTY  
One Year .....\$10.30  
Six Months.....\$5.50  
ELSEWHERE IN NORTH CAROLINA  
One Year .....\$14.80  
Six Months.....\$7.85  
ELSEWHERE IN U.S.A.  
One Year .....\$15.95  
Six Months.....\$8.35

Second class postage paid at the Post Office in Shallotte, N.C. 28459. USPS 777-780.

### Brunswick Business Service

Xerographic Copier  
Paper 8 1/2 x 11  
Only \$3.45 per ream  
2 Locations  
Main St., Shallotte 754-8300  
Hwy. 211, Southport, 457-4565

### APRIL IS KEEP AMERICA BEAUTIFUL MONTH

KEEP AMERICA BEAUTIFUL  
Brunswick County Keep America Beautiful  
Affiliated with K.A.B., Inc.

"WE DID NOT INHERIT THE EARTH FROM OUR PARENTS. WE ARE MERELY BORROWING IT FROM OUR CHILDREN"

### HOW TO SUBSCRIBE TO THE BRUNSWICK BEACON

POST OFFICE BOX 2558  
SHALLOTTE, NORTH CAROLINA 28459

#### FOR AWARD-WINNING NEWS COVERAGE

ANNUAL SUBSCRIPTION RATES BY MAIL:		Sr. Citizen
<b>In Brunswick County</b>	□6.30	□5.30
N.C. Sales Tax	.32	.27
Postage Charge	3.68	3.68
<b>TOTAL</b>	<b>10.30</b>	<b>9.25</b>
<b>Elsewhere in North Carolina</b>	□6.30	□5.30
N.C. Sales Tax	.32	.27
Postage Charge	8.18	8.18
<b>TOTAL</b>	<b>14.80</b>	<b>13.75</b>
<b>Outside North Carolina</b>	□6.30	□5.30
Postage Charge	9.65	9.65
<b>TOTAL</b>	<b>15.95</b>	<b>14.95</b>

Complete And Return To Above Address

Name .....  
Address .....  
City, State .....  
Zip .....

1 Mile from Shallotte—off Hwy. 130 E.  
**754-6691**

Just in time for Easter...

- All types of garden and bedding plants
- Hanging flowering plants
- House plants

Open 9-9 • Monday - Saturday