

Cosby, Righteous Brothers Headline Azalea Festival

Bill Cosby, The Judds and the Righteous Brothers headline this year's N.C. Azalea Festival in Wilmington, April 11-14.

Touted as "one of the major springtime festivals in the nation," the event features the traditional and the novel this year. Activities peak Saturday, April 13, with the 9:15 a.m. two-hour parade downtown and 8 p.m. queen's coronation and pageant headlined by The Righteous Brothers.

But the week gets off to an early start with The Judds in concert at UNC-W's Trask Coliseum Tuesday, April 9, at 7:30 p.m. Reserve seat tickets are \$25.

The festival officially opens April 11 with the arrival of Queen Azalea XLIV (44) at Riverfront Park, followed by entertainer Bill Cosby in concert at Trask Coliseum (tickets \$25) and the first night of the Clyde Beauty-Cole Brothers Circus's three-day stop in Wilmington.

Continuous entertainment on five separate stages is planned during



COSBY

the Festival Street Fair Saturday and Sunday, along with arts and crafts

and food vendors, games and street performers.

Visiting ships in the harbor will be open for touring Friday, Saturday and Sunday, some at no charge and others with a fee. These ships include the U.S. Navy Continental Sloop-of-War replica *Providence*, the U.S. Coast Guard Cutter *Alert*, the *USS Nicholson* and possibly other vessels.

Country-western entertainer Gene Watson will headline the free Variety Show at Legion Stadium Friday, April 12, which will close with the traditional fireworks display.

Also Friday, the festival's three-day horse show opens in Hugh MacRae Park, free to spectators.

Activities concurrent with the festival include the Wilmington Model Flying Club's "Sun and Fun Fly-In" at Olsen Field off Murrayville Road, the Lower Cape Fear Coin Show at the Elks Lodge; home and garden tours; the Wilmington

Art Association Annual Spring Show at St. Thomas Preservation Hall and amateur boxing matches sponsored by Wilmington Parks and Recreation Department.

A volleyball tournament and tug-of-war are planned Saturday at Wrightsville Beach, while the Wilmington Railroad Museum will open its new regional history exhibit depicting the Atlantic Coastline's route.

More information on the festival, including locations, ticket availability and prices, is available from the festival office at P.O. Box 51, Wilmington, N.C. 28402 or (919) 763-0905. Office hours are 10 a.m. to 5 p.m. Monday through Friday and 10 a.m. to 4 p.m. Saturday. Concert tickets are \$25 each, with a purchase limit of six tickets per person. Phone orders are accepted as of March 6, while only mail orders postmarked March 5 or later will be honored. Major credit cards are accepted. The festival office is located in the former Harvey Cannon store in Independence Mall.

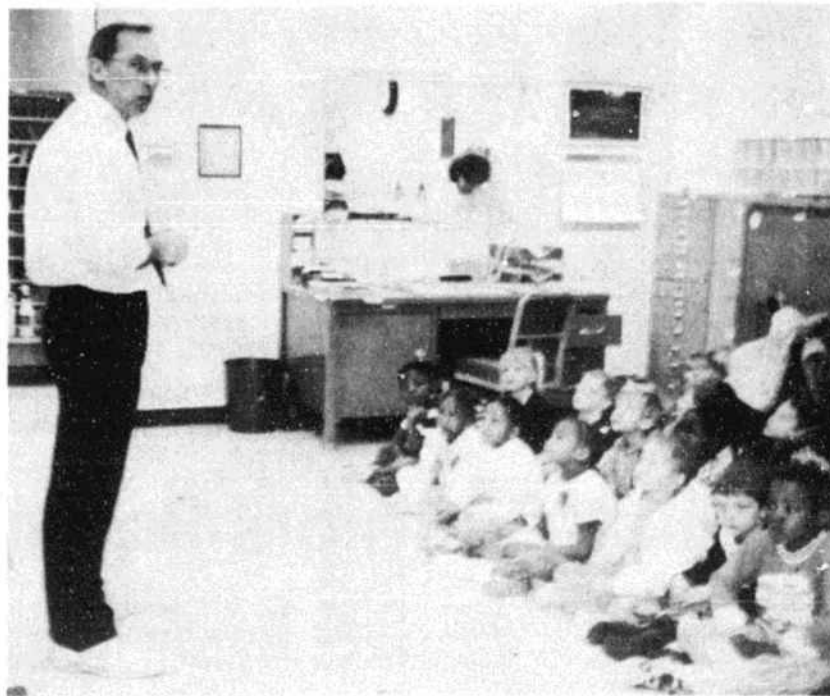


PHOTO CONTRIBUTED

Students Visit Post Office

Bolivia Postmaster Ron Law (left) explains the mail delivery process to kindergarten students from Bolivia Elementary School. The children wrote letters, addressed envelopes, purchased stamps and mailed the letters to their homes so as to better understand the process of corresponding through mail. Mary Walls, Annette Kye and Carolyn Bowling, mail carriers and the clerk at the Bolivia Post Office, assisted Law with the program. Students also received American flags.

PEOPLE IN THE NEWS

South Brunswick Teachers To Speak

South Brunswick Middle School teachers Patti Gail Price and Sandra Mullins will be among 127 presenters at the N.C. League of Middle Level Schools' annual conference March 11-13 at the Research Triangle Park.

Their presentation, "Cooperative Learning/Teaching-Math/Science," is part of a comprehensive program designed to provide participants a range of teaching strategies, curriculum designs, innovative approaches and organizational patterns unique to the middle school.

Mrs. Price is a seventh grade science teacher, and Mrs. Mullins teaches seventh grade math at South Brunswick.

Conference participants will have the opportunity to select sessions with middle school specialists from the N.C. Department of Public Instruction, 13 colleges and universities and 29 school systems.

Beach is teaching a first grade class at Eastern Elementary School in Pitt County. Allison M. Canady of Shallotte is teaching physical education at Wellcome Middle School, also in Pitt County.

Coleman Cited

Media coordinator Kay Coleman of Shallotte is Shallotte Middle School's new teacher of the month.

An educator for 25 years she has been on the staff of either Shallotte High School or Shallotte Middle School for 24 years. At Shallotte Middle she also serves as sixth grade co-ordinator for the advisor-advisee (AA) program.

COLEMAN

(AA) program.

She has undergraduate and graduate degrees from East Carolina University and holds membership in Iota Chapter of Delta Kappa Gamma education honorary, the N.C. Association for Educators and the National Education Association. Mrs. Coleman is active in the community and at Calvary Baptist Church, where she sings in the choir and teaches preschoolers.

Selected As Intern

Debbie Miller of Shallotte, a se-

nior in the Department of Interior Design at the University of North Carolina at Greensboro, has been selected for an internship this summer with Brayton International Collection of High Point.

She was one of 13 design students selected to participate in the department's 1990 spring honors studio. Students designed tables under the guidance of New York designer Michael Kalin.

Band Names Phelps

Chris Phelps, a senior, is the bandperson of the week at West

Brunswick High School.

The son of Joyce Phelps of Supply, he is a percussionist with the school band. He was nominated for his good work during the band's performance at the Shallotte Junior Woman's Club Art Festival.



MILLER



Two Student Teaching

Two Brunswick County residents are among the 305 undergraduates at East Carolina University who are student teaching during spring semester in area high schools.

Ten weeks of teaching experience are required for a degree in education at ECU and for certification as a teacher in the North Carolina public schools.

Sharma K. Harness of Yaupon

BCC Sets Class In Portraiture

Brunswick Community College is offering a class in portraiture using all types of media, including water colors, oils and acrylics.

The class meets Monday and Tuesday from 1:30 p.m. until 4 p.m. at Doe Creek Art Gallery, located on U.S. 17 near The Brunswick Hospital in Supply.

Instructor Terry Sellers said the

class started March 4 and continues through May 28. Beginning and advanced students are welcome.

Students can register during the first three weeks of class. The registration fee is \$20. The class is free for North Carolina residents age 65 and older.

For more information, call the gallery at 754-7919 or Brunswick Community College at 754-6900.

"Life Insurance that's right for you... that's what State Farm is all about."



CALL ME.
DWIGHT FLANAGAN
Phone 754-9923
Jct. Hwy. 17 & 211
PO Box 78
Supply, NC 28462

State Farm
Life Insurance Company
Home Office: Bloomington, Illinois



Like a good neighbor,
State Farm is there.

Blinds 'n Things
Park Plaza
1451-C Highway 17 South
North Myrtle Beach, SC 29582
Tel. (803) 272-1719

- Mini Blinds • Micro Blinds
- Vertical Blinds • Shutters
- Pleated Shades • Wood Blinds
- Custom Roller Shades
- Silk Arrangements • Bedspreads
- Draperies • Wallpaper

RESIDENTIAL COMMERCIAL CONTRACT

See us for special savings
•Free Measuring
•Stock Verticals
\$69⁰⁰

HAZEL & BILL LASSITER
OWNERS

It's **Bedding Replacement Time!**
Save during our inventory
\$ \$ Reduction Sale \$ \$

FIRM II INNER SPRINGS TWIN SET \$89 ⁹⁵	NON-SAG EXTRA FIRM 10 YEAR WARRANTY 312 COIL TWIN SET \$119 ⁹⁵	ORTHOPEDIC BACK COMFORT SUPREME 20 YR. WARRANTY TWIN SET \$134 ⁹⁵
FULL SET \$105 ⁹⁵	FULL SET \$134 ⁹⁵	FULL SET \$174 ⁹⁵
QUEEN SET \$132 ⁹⁵ SAVE	QUEEN SET \$174 ⁹⁵	QUEEN SET \$196 ⁹⁵
	KING SET \$254 ⁹⁵ SAVE	KING SET \$294 ⁹⁵

FREE—Your choice with \$150 bed purchase: Bed Frame, Local Delivery or Pillows
5% Senior Citizens Discount

Factory MATTRESS Outlet
formerly R&R MATTRESS OUTLET
HWY. 17, SHALLOTTE
SHALLOTTE PLAZA
754-5727
17th & Market St., Wilmington
762-7331
Mon.-Fri. 9-5, Sat. 9-4
CLOSED WEDNESDAYS

Free Delivery 457-6613

DISCOUNT FURNITURE WAREHOUSE
OF BRUNSWICK COUNTY, INC.
ON LONG BEACH ROAD IN SOUTHPORT

Your Recliner & Rocker Headquarters

From Futons To Bedding!
Something for every room in your home.
Where value & quality meet...10,000 sq. ft. of quality furniture at discount prices.

Take The Short Drive To Great Savings!
100% Financing ★ FREE DELIVERY ★ Open Mon.-Sat. 10-6

A Free And Easy Way To Find The Doctor Who's Right For You!

Need A Doctor? Call Physician Finder... 754-5055 **Rx**

PHYSICIAN FINDER 754-5055
The Brunswick Hospital has established the Physician Finder Service to help you find the doctor who's best suited to your needs.

All you have to do is call. There's no cost to you for using The Brunswick Hospital "Physician Finder," and the benefits can last a lifetime.

THE BRUNSWICK HOSPITAL
An Affiliate of HEALTHTRUST INC. The Hospital Company
Hwy. 17 S., Supply

You'll Be Glad You Did! **Rx**