

Rainfall Closes Shellfish Waters

All shellfishing waters between Southport and the South Carolina state line were temporarily closed to harvesting Saturday.

The N.C. Division of Marine Fisheries closed the waters due to heavy rainfall and the resulting runoff, according to a proclamation.

Environmental officials say the runoff caused by heavy rainfall carries bacterial pollution into streams and rivers and contaminates shellfish.

This Week's Tide Table

		HIGH		LOW	
Day	Date	A.M.	P.M.	A.M.	P.M.
Thursday	12	1:21	1:49	7:52	8:08
Friday	13	2:30	3:03	8:59	9:18
Saturday	14	3:39	4:13	10:06	10:24
Sunday	15	4:42	5:15	11:04	11:25
Monday	16	5:41	6:13	11:57	—
Tuesday	17	6:34	7:04	12:21	12:47
Wednesday	18	7:26	7:55	1:14	1:34

ADJUSTMENTS
 SHALLOTTE INLET—add 17 min. high tide, add 32 min. low tide.
 LOCKWOOD FOLLY—subtract 22 min. high tide, subtract 8 min. low tide.
 BALD HEAD ISLAND—subtract 10 min. high tide, subtract 7 min. low tide.
 SOUTHPORT—add 7 min. high tide, add 15 min. low tide.
 LITTLE RIVER—add 7 min. high tide, add 7 min. low tide.

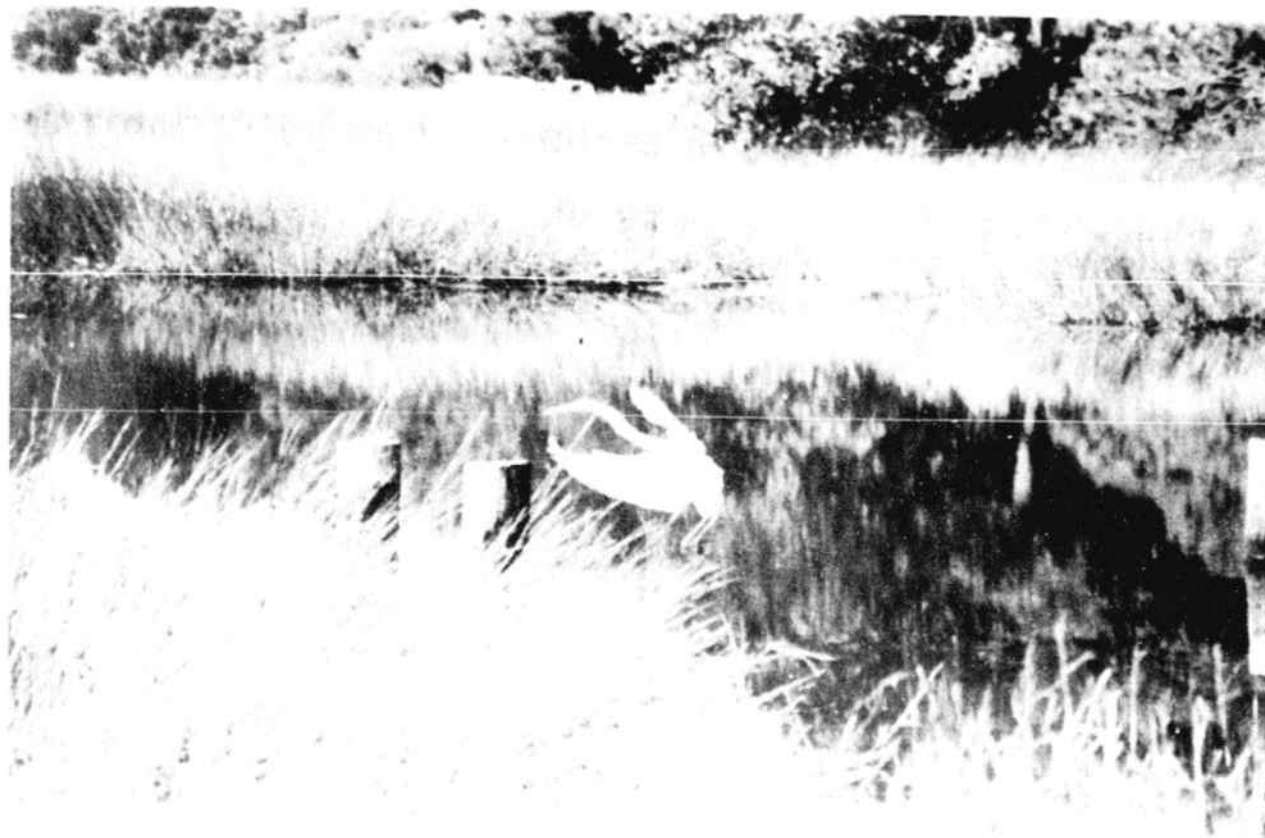
King Association Sanctions Tourney

The Southern Kingfish Association will sanction this spring's North Myrtle Beach Rotary King Mackerel Tournament.

The third annual fishing event will be held May 8-10 out of Harbourgate Marina. The entry fee will be \$200 per boat, and entries received prior to May 1 will be eligible for fish bowl drawings at the awards ceremony.

Proceeds from the tournament are donated to charity. Spokesman John Schwab said last year's event raised more than \$2,500 for Polio Plus, a Rotary International charity.

For more information, write to Schwab, c/o Pelen Inc., P.O. Box 729, North Myrtle Beach, S.C. 29597, or call him at 754-6274.



An Afternoon Spin

A snowy white egret, one of the many species that inhabit Twin Lakes between Sunset Beach and Calabash, was seen soaring above water and marsh grass on a recent sunny afternoon. This majestic bird was one of three spotted clustered together at the western lake, enjoying the springlike temperatures.

STAFF PHOTO BY DORI C. GURGANIUS

Limits Coming On Blues, Weakfish

The N.C. Division of Marine Fisheries will enforce limits on the harvest of bluefish and weakfish this spring.

Starting April 1, fishermen using hook-and-line will be prohibited from catching or possessing bluefish less than 10 inches long.

The same minimum size restriction will apply to weakfish, also called gray sea trout, starting next month.

Anglers also will be prohibited from catching more than five blues in one day that are more than 24 inches long.

The regulations were announced in proclamations issued last week by the state fisheries director.

EVEN SMALL ADS GET
BIG
 RESULTS IN THE BEACON

Auxiliary's Holding Safe Boating Course

Shallotte Flotilla 10-08 of the U.S. Coast Guard Auxiliary is holding a safe boating class Monday and Thursday nights at the Shallotte Senior Citizens Center.

The course, which covers topics such as boat construction, trailering, boat handling, navigation, engine maintenance and radio communications, runs from 7 p.m. to 9 p.m.

The free class started March 9. Participants pay a nominal fee for instruction booklets.

For more information, call Bernard Hanke at 842-3212.

TJ's AUTO ELECTRIC

ALTERNATORS STARTERS
 VOLTAGE REGULATORS GENERATORS
 REPAIR—REBUILT—EXCHANGED
AUTOMOTIVE WIRING
754-7656
 Royal Oak Road & Hwy. 17 N., Shallotte

©1992 THE BRUNSWICK BEACON

Rumors Circulate Over Long Beach Sewer Vote

Rumors on Oak Island last week confused residents there preparing for an upcoming sewer bond referendum.

Long Beach voters will go to the polls March 31 to accept or to reject the sale of up to \$15.5 million in general obligation bonds to help finance a proposed town sewer project.

Rumors indicated the amount of the bonds in question had been changed following a meeting of the Long Beach Town Council last week.

But Brunswick County Board of Elections Supervisor Lynda Britt said the amount on the special bond ballot cannot be changed.

Those ballots have already been printed and sample copies are available from the elections office for review.

Mrs. Britt received phone calls last Thursday from concerned residents who had heard the ballot contained an error. Sample ballots are prepared from a copy of the official ballots, which are locked away.

The ballot asks voters to vote "yes" or "no", by filling in an arrow,

on the following question:

"Shall the order authorizing \$15,500,000 of bonds secured by a pledge of the faith and credit of the Town of Long Beach to pay capital costs of providing a sanitary sewer system, including the construction of collection lines and a treatment plant, and including the acquisition and installation of necessary machinery and equipment and the acquisition of land or rights-in-land, and a tax to be levied for the payment thereof, be approved?"

Councilmen approved a financial plan and preliminary design proposal last week for the gravity and pressure wastewater system estimated to cost around \$19.1 million, a figure that may have confused residents when compared to the \$15.5 million on the ballot.

A treatment facility would be constructed on the mainland near Sunset Harbor. Taps and assessments would pay for about \$7.5 million of the project, and the town also hopes to obtain a \$9 million loan from the state Clean Water Fund program.

Express CARE

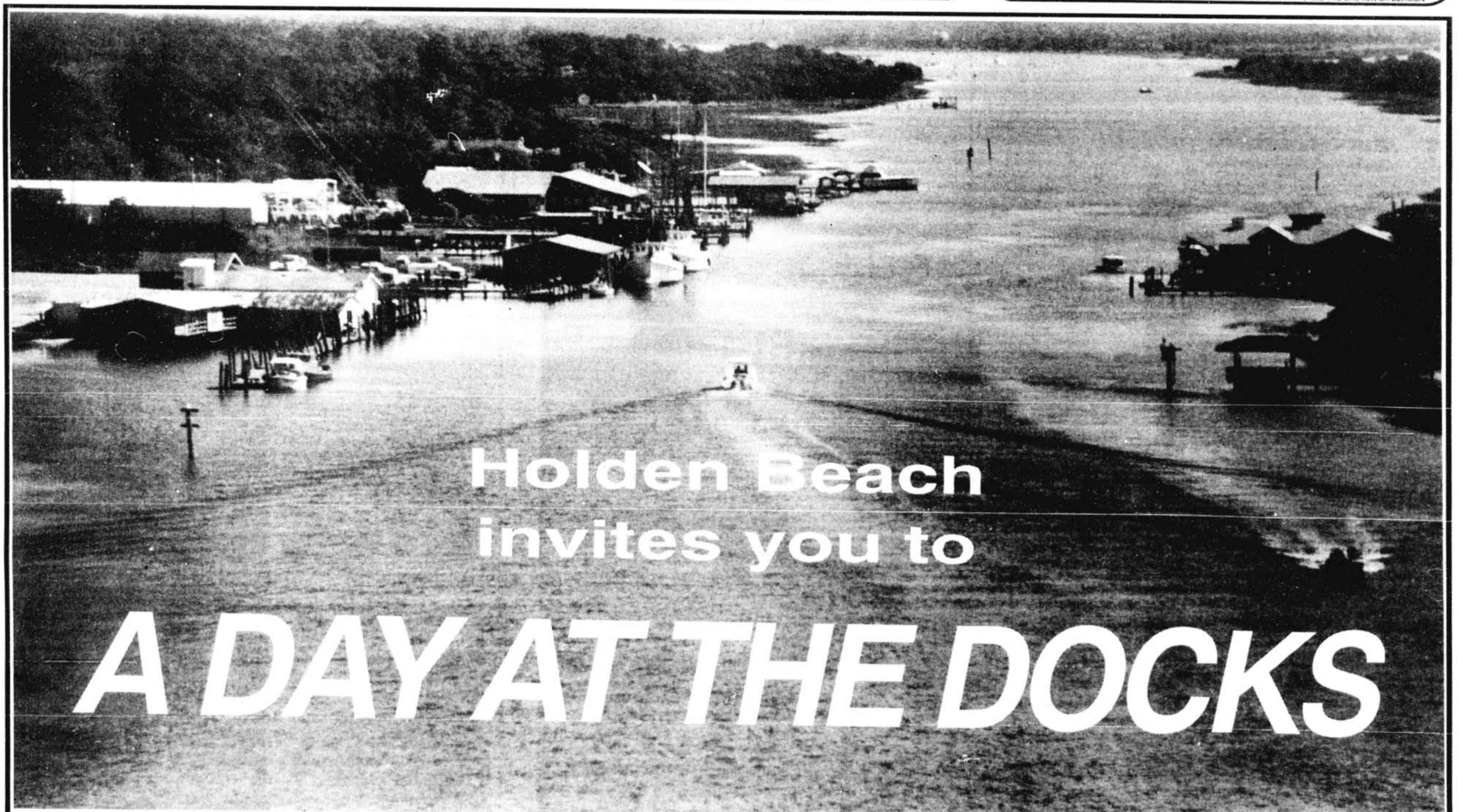
PROMPT MEDICAL CARE

—SPRING HOURS—
 Monday -Saturday 9 am-7 pm

579-0800

South Brunswick Islands Medical Park
 Hwy. 17, 4 miles south of Shallotte

©1992 THE BRUNSWICK BEACON



Holden Beach invites you to

A DAY AT THE DOCKS

SATURDAY, MARCH 21, 10 AM-4 PM at HOLDEN BEACH MARINA

Spend the day...join us for a fish dinner at \$4 a plate to be served from 11 am until..., take a free boat ride along the Intracoastal Waterway. Tour a Coast Guard vessel. Listen to music by the Brunswick Concert Band and The Sugar Loaf Ramblers. Admire exhibits by local professional artists.

Sponsored by...**THE HOLDEN BEACH FISHING FLEET** (ALICE E-SUPER SALTY I-SEA WOLFE)
HOLDEN BEACH MARINA, WCCA-106.3 FM, COCA COLA
and THE GREATER HOLDEN BEACH MERCHANTS ASSOCIATION

For further information contact **THE GREATER HOLDEN BEACH MERCHANTS ASSOCIATION, 842-3828.**