



STAFF PHOTO BY ERIC CARLSON

Dropping In

Rick Edwards of Raleigh carves a long bottom turn during a rare spring day of overhead waves near the Holden Beach Fishing Pier. Surfers on the South Brunswick Islands find smaller swells during the summer, but at least they can take off their wetsuits.

LIMITED EDITION PRINTS

By Timberley Adams

These limited edition prints, reproduced from watercolor paintings by Ocean Isle Beach artist Timberley Adams, capture the warmth, beauty and serenity of North Carolina's two southernmost barrier islands. Available in select area shops, The Museum of Coastal Carolina at Ocean Isle or directly from the artist.

To order add \$4 postage & handling and mail to:

Timberley Adams, PO Box 2652
Shallotte, NC 28459
Allow 4-6 weeks for delivery.



s/n 14"x20" Image **Kindred Spirits** \$32⁰⁰
©1990 T. Adams



s/n 11"x14" Image **Gazebo At Sunset** \$26⁰⁰
©1992 T. Adams

10% to be donated to Bird Island Preservation Society & The Nature Conservancy

TAKE A BITE OUT OF A GREAT WHITE!

CURLY'S GRILL

GREAT TASTING WHITE HOT DOG!

[Signature]
AUTHORIZED SIGNATURE

BUY ONE GREAT WHITE, GET ONE FREE
With This Ad
Harbor Square, Little River, SC 29566 • (803)249-9553

Arts & Crafts Show
Now At 2 Locations

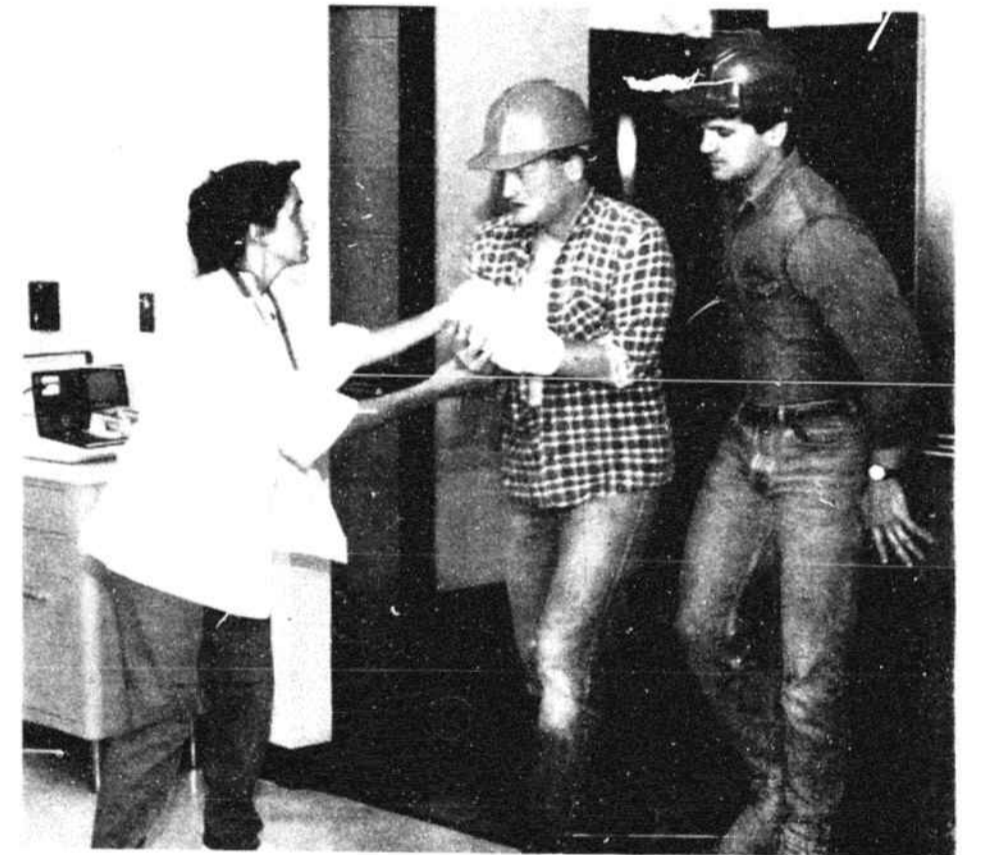
* Over 60 Crafters * Gourmet Fudge
* Miniatures * Sugarfree Chocolate

The Gingerbread House
A Delightfully Different Place to Shop

We Ship Everywhere

Shallotte Hours 9:30 - 8:00 Holden Beach Road 1/2 mile from Wal-Mart 754-8979	Calabash Hours 3:30 pm - 9:30 Beach Drive SW 500 ft east of stoplight 579-8485
--------------------------------------------------------------------------------------------------	---------------------------------------------------------------------------------------------------

No Time To Waste!



There are some situations in which fast action is required. An on-the-job injury is one of those situations. Postponing treatment of any injury can result in serious damage if not treated quickly.

The **EMERGENCY CENTER** at The Brunswick Hospital is equipped with sophisticated monitoring and diagnostic technology and is staffed with experienced physicians 24 hours a day. We are conveniently located on Highway 17 in the center of Brunswick County and are ready to handle your emergencies.

When someone close to you is ill or injured, seek care from a qualified physician quickly. In an emergency, there's no time to waste!

EMERGENCY CENTER



THE BRUNSWICK HOSPITAL

Highway 17 / Supply, NC / 919-754-8121