

HERTFORD BLESSED WITH BEAUTIFUL AND UP-TO-DATE CHURCHES AND SCHOOLS

Citizenship Deeply Impressed With Things Both Institutions Promulgate

Beautiful churches and top-flight schools play a large part in the daily lives of Hertford people. On Church Street there is Holy Trinity Episcopal Church. The rector, the Reverend Edmund T. Jillson, holds two services each Sunday, except during the warmest summer months when only one service is conducted. Church school services are held in the forenoon.

On Market Street are located the Methodist and Baptist Churches, both of which have in the past few years been enlarged to provide roomier quarters for Sunday School and Church social activities. The Reverend D. M. Sharpe is pastor of the Methodist Church, and the Reverend J. F. Stegall is pastor of the Baptist

Church, both of whom hold two daily Sunday services throughout the year together with Sunday School classes each Sunday morning. Prayer meetings are held on each Wednesday night in the Baptist and Methodist Churches.

The impressive county high school building located just outside the city limits on United States Highway 17, south, is the same in exterior and interior appearance as it was on the day in 1924 when the new building was first turned over to the children. No extensive repairs have been made but the spotless keeping of the building signifies the tremendous amount of pride the county and town students take in their educational surroundings.

It is difficult to believe, when walking through spotless corridors, that the walls are not newly painted every month or two.

Fourteen school passenger busses transport the students daily from all sections of the county. Many of the farm boys are members of the voca-

tional agriculture classes, conducted by G. C. Buck. Under his leadership, the young student farmers, many of them members of the F. F. A. and the Y. T. H. F., have claimed high places of distinction in State-wide judging contests and in other phases of rural life.

The recent completion of the Perquimans County Consolidated Grammar School at Winfall, represents a big step forward in getting away from one-room country schools. Serving for six former one-room schools, the new Winfall plant (beginning its second year) tenders to the county pupils all the modern facilities and conveniences that town children enjoy.

The Hertford Graded School, located almost in the heart of Hertford, and like all other schools in the county is under the direction of F. T. Johnson, county superintendent of schools, is now undergoing a major modernization process to place the auditorium on the ground floor and to equip the building with second floor fire escapes.

Instilled in the people of the town and county is a deep appreciation for the things that churches and schools stand for, and the fine buildings dedicated to these causes reflect that appreciation.

Progress Comes To Winslow - White Co.

Ford Agency Does Remarkable Business In Short Time

One of Hertford's youngest business institutions is the Winslow-White Motor Company, "your Ford Dealers" which were incorporated less than two years ago. The Winslow in the firm is L. C. (Lindsey) Winslow, and the White is E. Q. (Elwood) both young Perquimans County men born and raised in this county.

Progress there since the original opening has been amazing in the number of cars and trucks sold. Winslow-White is also an authorized Ford parts and service center. Genuine Ford parts, and almost anything in the accessory line for motor cars or trucks, can be found here.

Mr. White is secretary, treasurer and manager, with Cecil Winslow and Tom Byrum as salesmen for the agency. Alvin White is bookkeeper. Bill Boyce and William Elliott are the

verified Ford mechanics. Mr. White and Mr. Boyce were both associated at one time with the old Divers' Motor Company; Mr. White as bookkeeper and Mr. Boyce in the service department.

The Winslow-White Motor Com-

pany is located in a large modern brick building on the corner of Grubb and Front Streets.

United States net balance of exports over imports in half year was \$631,74,000, the best since 1921.

"WE KNOW FINER TOBACCOS — WE SMOKE CAMELS"

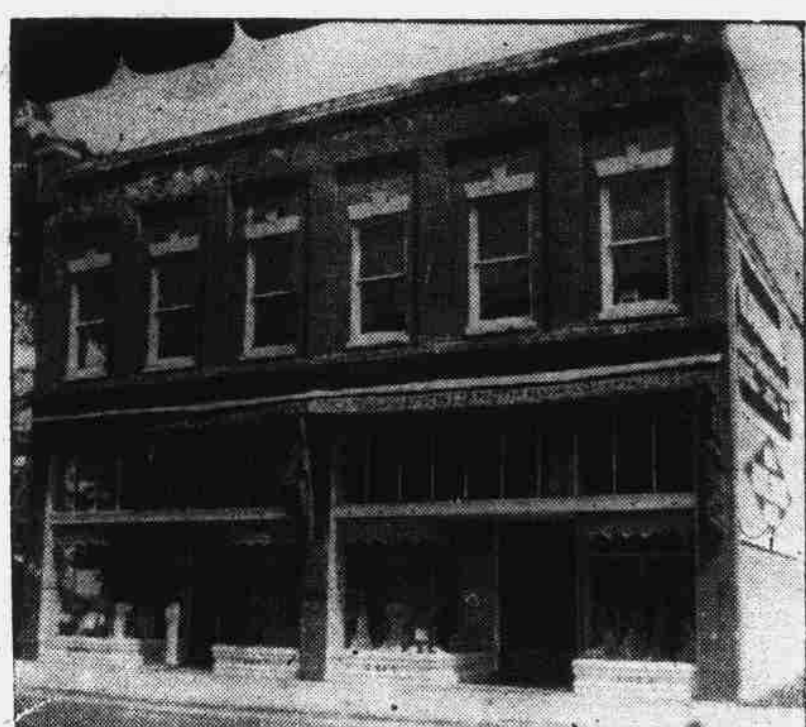


JOHN T. BONE (left) knows tobacco because he grows it. He says: "From experience, I know Camel buys finer tobacco. Camel bought my best lots last season. I smoke Camels because I know I'm getting finer tobacco. Most planters I know smoke Camels for the same reason."

THE "THOUSAND CIGARETTE TEST." Before it comes to you, every Camel cigarette goes through rigid tests to make sure that it is a perfect cigarette — plump, firm, full weight — and that each Camel gives you the same matchless blend of finer, costlier tobaccos — Turkish and Domestic. Try Camels. You'll find them better for steady smoking.



FOR 106 YEARS



We Hope You Will Make This Large Modern Store Your Headquarters for Appointments, Phone Calls, etc., During Your Shopping Visits.

This Section's Oldest Department Store Has Served Efficiently and Satisfactorily the Needs of a Vast Number Of Farm And Industrial People - - -

And Now to the Thousands Of Good People Across the Albemarle Sound We Offer - - -

GREETINGS

The opening of the new Sound bridge unites a new Albemarle—with, we hope, a much closer relationship between the North and South areas.



The farmer will find here the largest and most diversified stock of farm equipment, we believe, than anywhere in this section.

TRACTORS - PLOWS - WAGONS - FERTILIZERS
LAND PLASTER

Terms Arranged to Suit Your Convenience



Clothing For The Entire Family From Head To Foot

Three experienced "buyers" see that our wearing apparel is always "in the trend" and that quality and style are not sacrificed for price. Qualified, courteous attendants are eager to please you and make you feel "at home."

We Think You Will Like Us - -

- - We Know We Can Serve You

J. C. BLANCHARD & CO., INC.

Quality Merchandise

"BLANCHARD'S" SINCE 1832

Right Prices