

More Than Any Disease

Accidents kill more persons aged 1 to 25 than any disease. In fact, among children 1 to 14 years of age accidents kill more than the first six most important non-accidental causes combined.

The figures for the 1-14 age group in 1948, the latest year for which a comparison can be made, are listed as follows in the 1951 edition of "Accident Facts," the National Safety Council's statistical yearbook:

Accidents	10,741
Pneumonia	3,254
Congenital Malformations	2,989
Cancer	1,381
Tuberculosis	1,311
Leukemia and Aleukemia	1,137
Heart Disease	1,129
Poliomyelitis, Polioencephalitis	999
Diarrhea and Enteritis	957
Nephritis	714

Road Work Hums All Over State

Contractors are currently working on 345 grading, bridge and paving projects in North Carolina, Highway Chairman Henry W. Jordan has reported.

That averages out to over three road jobs under way in each of North Carolina's 100 counties. The figure does not include the bridge and road construction work being conducted by Commission forces.

Another 93 contracts have been let to contract, he said, but work has not yet started. Several of these are bridge projects on which delivery of steel is being delayed because of the shortage arising from the national defense program.

Road construction work generally is progressing fairly well on schedule, Chairman Jordan commented. He pointed out that nearly 70 per cent of the projected 12,000-mile rural paving program, financed by the \$200,000,000 bond issue, has been completed. Sixteen more bond projects were included in a letting held Tuesday, August 28.

The Tuesday letting also included

the largest earth-moving project which the North Carolina State Highway Commission has ever called for bid. The project involves grading 6.36 miles of roadway over the Blue Ridge Mountains between Old Fort and Ridgecrest for a dual-lane highway. Commission engineers estimate \$822,000 cubic yards of earth-moving must be done on the job which will cross the Buncombe-McDowell county line. Another project involving heavy earthwork grading will require moving of 1,170,000 cubic yards on 4.56 miles of roadway between Waynesville and Canton in Haywood County.

Garden Time

By ROBERT SCHMIDT

early crops could be plowed after the clover is large. Crimson clover should be planted in early September and will require about 20 pounds of seed per acre. If you have not many vegetables are still growing in the gardens of the State and for that reason we don't begin to think of cover crops until too late for some of the better ones. There is no good reason at all why cover crops should not be planted among garden crops at the last cultivation which is right at hand in some parts of the State.

Three of the more commonly used cover crops are rye, Italian rye grass and crimson clover. My personal objections to rye and rye grass are that in small gardens they are very difficult to turn under so that they will not come up again and require killing with a hoe. However, they do have the advantage of making good early growth in the spring.

My choice is crimson clover because of its ease of handling and because it is a legume. One objection to it is that it doesn't make heavy growth in spring as early as rye. However, the part of the garden to be used for grown clover before, you may have to inoculate at planting time. The large seed stores sell clover inoculants. If your soil is very acid an application of lime would help, too.

As I have intimated earlier in this column, I grow dahlias as a hobby. Even with such a large growing crop I make a practice of sowing crimson clover among the dahlia plants about the first or second week in September each year. I have been pleased with the results and I'm sure you will be

Broilers And Fryers Listed As Poultry

Broilers, fryers and processing chickens are top items on the U. S. Department of Agriculture's poultry foods list for September, Mrs. Nina B. Wallis, county home demonstration agent for the State College Extension Service, said this week.

Broiler production may average as much as 30 per cent above last September, the agent said.

The 1950-51 canned citrus pack in

FOR SALE

SMALL DOWN-TOWN BUSINESS

ELIZABETH CITY, N. C.

Complete with fixtures. Good location, small overhead. Priced reasonable.

EXCELLENT OPPORTUNITY!

Write

Box 128

Care Perquimans Weekly HERTFORD, N. C.



"Please call again later, Bob"

This little thrush isn't giving her boy the brush. She's a teen who's keen about being a good telephone party-line neighbor. She knows it's important to use the phone sparingly, and to keep calls reasonably brief. If everyone on the party line will follow her lead—every party line will have better telephone service.

TELEPHONE & TELEGRAPH THE NORFOLK & CAROLINA COMPANY

Elizabeth City - Edenton - Manteo Hertford - Sunbury

HERE'S THE REASON

THE C. M. ATHEY PAINT CO. BALTIMORE 30, MD.

Athey's

OIL BASE FLAT WALL PAINT

with that *Luxury Look!*

- 50 Shades from Pastels to Deep Tones
- Insist on ATHEY'S

Manufactured by THE C. M. ATHEY PAINT CO., BALTIMORE 30, MD.

You can't hurt an Athey surface!

FLAT WALL PAINT

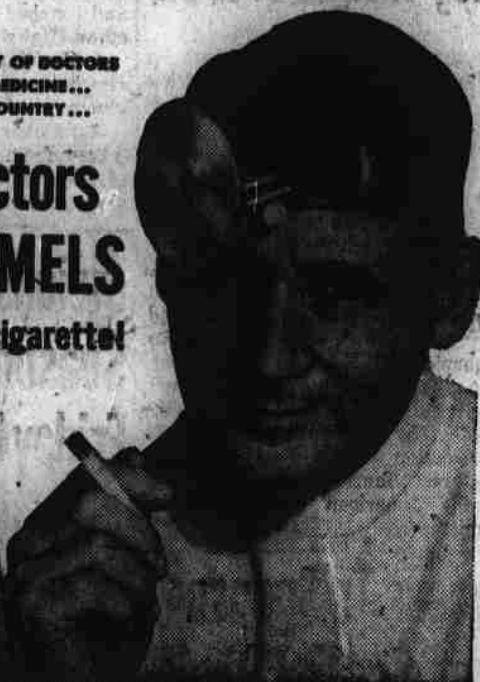
Hertford Hardware & Supply Co.

HERTFORD, N. C. PHONE 3461

ACCORDING TO A SURVEY OF DOCTORS IN EVERY BRANCH OF MEDICINE... IN ALL PARTS OF THE COUNTRY...

More Doctors Smoke CAMELS

than any other cigarette!



Don't Argue!

Protect your car, Protect yourself with FARM BUREAU AUTO INSURANCE

When you're covered with Farm Bureau Insurance you don't have to worry. Prompt, friendly and efficient action-wide service is always close at hand to help. Standard "across-the-board" protection at money-saving rates. More than a million city and farm drivers insured... \$19 million in claims paid last year. Compare this protection at these costs with any. Call —

Herbert N. Nixon

Phone 8446 or 3196 HERTFORD, N. C.

FARM BUREAU MUTUAL AUTOMOBILE INSURANCE COMPANY

FORD

trucking costs less...



You save money every mile with the Ford Truck Power Pilot... as demonstrated by 5000 drivers in the nationwide Ford Truck Economy Run! They kept daily on-the-road expense records, showed in black and white that a dollar goes a long, long way with a Ford! A standout reason why: the Power Pilot, which gives you the most power from the least gas. See your Ford Dealer about it!

because...

