

Spending Level Key To Balance Budget

The test of the country's determination to put the Federal establishment back on a pay-as-you-go basis, and to end the anomaly of budget "red ink" and deficit financing in periods of record prosperity, is now at hand.

The big question mark, and the primary deciding factor, will be the level established by the lawmakers for Federal expenditures for the 1956 fiscal year, which begins next month, and whether the Administration and Congressional economy advocates can ward off the spenders and hold the outlays to the ceiling previously projected for the period.

Estimates and Trends
The President in his message to Congress in January estimated Federal budget expenditures for the 1956 fiscal year at \$62.4 billions and receipts at \$60 billions. This indicates a budget deficit of \$2.4 billions for the year. However, the current buoyancy of the economy, with its accompanying growth in production, personal income and corporate profits, suggests that Federal receipts will substantially outstrip expectations unless an unexpected setback occurs.

For example, economists identified with the budget-making process are now anticipating a level of corporate profits of \$40 billions or more for the current year as compared with \$35 billions in 1954 and a basis of \$38.4 billions on which the Treasury estimated corporate income tax receipts for the 1956 fiscal year. These experts also see a strong possibility of a \$300 billion level in personal income before taxes for the year as compared with \$286.5 for 1954 and a figure of \$298.5 billions foreseen by the Treasury.

Thus the added revenues inherent in the rising tide of income and economic activity may well be enough to close the budget gap projected for the 1956 fiscal year if "spending" is held down. This likelihood would be strengthened if further economies are put into effect.

Pressures for Tax Reduction
Two other developments are shaping up that emphasize the necessity of keeping down the cost of Government to the lowest possible level, consistent with defense and other essential needs.

The first of these is strong likelihood that there will be some tax reduction next year. This has already been indicated by the President, and pressures for it are mounting. A total of about \$3 billions in corporation and excise taxes, originally imposed to help finance the cost of the Korean War, are due to expire next April. Furthermore, some easing of the heavy individual income tax burden is reasonably certain to be part of a tax reduction program.

The second is the fact that costs of production and of business operation in general have been rising steadily. Should we get another boost from the labor negotiations now going on, it will have a noticeable impact on the price level. If inflationary pressures, especially if Federal outgo continues to exceed income as it has in all but three out of the last 25 years.

Make The Most Of Hot Summer Days

What are you doing about the hot summer days? Complaining? Or are you taking advantage of your children's being at home to plan some sort of family recreation?

According to Corinne Justice Grimsley, State College extension specialist in family relations, wholesome recreation strengthens families by providing opportunities for each person to achieve importance—to feel worthwhile.

If a father and his son play ball together, for example, they reach a comradeship through which a man can guide and help his boy. A mother who shares good times with her daughter builds up understanding and congeniality that enables her to more easily guide her child in difficult situations.

Mrs. Grimsley explains that parents can't stay on their parental when junior is able to beat them in a game of croquet. It's good for the parents and it's good for junior to become good friends and playmates. And Mrs. Grimsley adds that there's no finer place to teach sportsmanship and fair play than in games.

Why not plan an out-door meal for the family soon? You need a good father to give your ownback yard to live up with the family. Mrs. Grimsley points out too, that your yard is made for teaching young children about their world. Take time and study with them the meaning of the yard and the trees.

shots that makes them thrilling, interesting and exciting. Parents are losing one of their greatest chances for happiness if they don't find time for fun and recreation as a family.

PERSONAL ITEMS

Sunday Guests
Mr. and Mrs. W. L. Hofer and children of Richmond, Va., Mrs. Charles Crowder of Edenton, Mr. and Mrs. Casper Meekins and children of Elizabeth City and Mr. and Mrs. Rufus Jackson and daughter of Colesville visited relatives.

From Raleigh
Miss Elizabeth Tucker of Raleigh is visiting her mother, Mrs. Isa Tucker.

In Hospital
W. J. Kanoy, Jr. was admitted to the Albemarle Hospital Sunday for observation.

Wednesday At Nags Head
Mr. and Mrs. Martin Towe and children spent Wednesday at Nags Head with Mrs. Tom Skipsey.

Returned From Hospital
George Powell returned to his home Thursday from Watts Hospital in Durham.

Episcopal Meeting In Honolulu Is Set For Sept. 4 To 15

The largest convention in the history of Honolulu, capital city of what will probably become the 49th state, will meet September 4-15. The General Convention of the Protestant Episcopal Church will be guests of the Missionary District of Honolulu and its 15,000 Episcopalians, marking the first time this legislative body of the Church has met outside continental United States and in a mission district.

The bicameral legislative body consists of a House of Bishops, which presently numbers 185, and a House of Deputies which has a potential membership of 654. The Triennial Meeting of the Woman's Auxiliary of the Church, which will draw another 500 women delegates, will meet at the same time. Sessions of various bodies will be held on the campus of Inland School, a residential school for boys supported and administered by the Missionary District of Honolulu.

The Convention will consider, as bases for legislation, reports from its Joint Committees, composed of bishops and deputies, and Joint Commissions, which also include outside specialists. The official Committees cover such fields as: problems of alcoholism, revision of constitution and canons, program and budget. Commissions have been established to study: ecumenical relations, unity with other Churches, architecture and Church music, clergy tensions, assistance to Eastern Orthodox Churches, problems of missionary work in industrial areas, matrimony, social reconstruction and theological education.

Heroes Of Fame

It was the day of the big cricket match. The famous batsman stepped with full escort of fans. One sprightly urchin dashed up to the home and presented an autograph album and pencil. "Let's have your name here, will yer?" and he departed with the prize scrawl.

The game went opposite to expectations, the hero was a thorough miff, the favorites lost. As the players finished and the hero filed out of the dressing room, the urchin piped up from the crowd: "Hi, there. Got an eraser?"

For Sale

Registered Duroc & Hampshire Boars \$40 TO \$65
CHAMPION BLOODLINE ALSO BRED GILTS
Phone or See
CLARENCE CORNWELL, JR.
1000 W. 10th St. Herford, N.C.



Raspberries and dewberries have just about completed bearing for this season in eastern and central North Carolina and now is the time to prune them. To understand why we prune them at this time we should know something about the growth and fruiting habits of these crops. Raspberries and dewberries bear most of their crop on new shoots that come out of canes of last season's wood. Each season after bearing a crop the last season canes will die and their place will be taken by new canes which come up from the roots of the plants. The old canes therefore should be removed as soon as the crop is harvested. This practice will give more room for the new canes to develop as well as to get rid of diseased plant materials.

In eastern North Carolina a slightly different procedure is used

for dewberries. As soon as the crop is harvested all canes, both old and young, are removed at the ground. Then the land is cultivated and a top dressing of nitrate of soda is given the plants. In a few days the new shoots will appear and will make sufficient growth during the rest of the season to produce a good crop the next year. This new growth is allowed to run along the ground and is not tied up to stakes until next spring. This practice as outlined above gives a fair control of anthracnose disease of dewberries. The plant growth that is cut off at the ground should be destroyed by burning in order to get rid of all disease. In the mountain areas the season is not always long enough to permit the removal of the new canes. In that case only the old canes are removed.

Is Your Child Headed For Trouble?

On the promise that an effective screening device could be worked out to determine the abnormalities in mental health of the school child, Pasquotank County Health Department, under Dr. B. B. McGuire, Health Officer, started a partial survey of the elementary school child in December, 1954. First, permission and complete cooperation was obtained from superintendents of schools and principals, superintendents of Welfare and Chief of Police.

A variation of the multiple criteria technique that has been effectively proven in New York and Ohio was used. In totality this involved four major criteria:

1. Growth Criteria—I. Q. (achievement rating in reading and arithmetic and age in class).
2. Adjustment Criteria—For aggressive and withdrawn behavior as shown by a rating scale and "guess who" test.
3. Social Isolation.
4. Truancy.

Our criteria include the age in class of group 1 above, and No. 2, 3 and 4. The I. Q. and achievement tests were omitted because it was impossible to obtain these tests on all children. The tests were concluded in three schools and the results are as follows:
Number tested: 1,083; Deviates: 424; Sex Defectives: 51; Speech Defectives: 169.

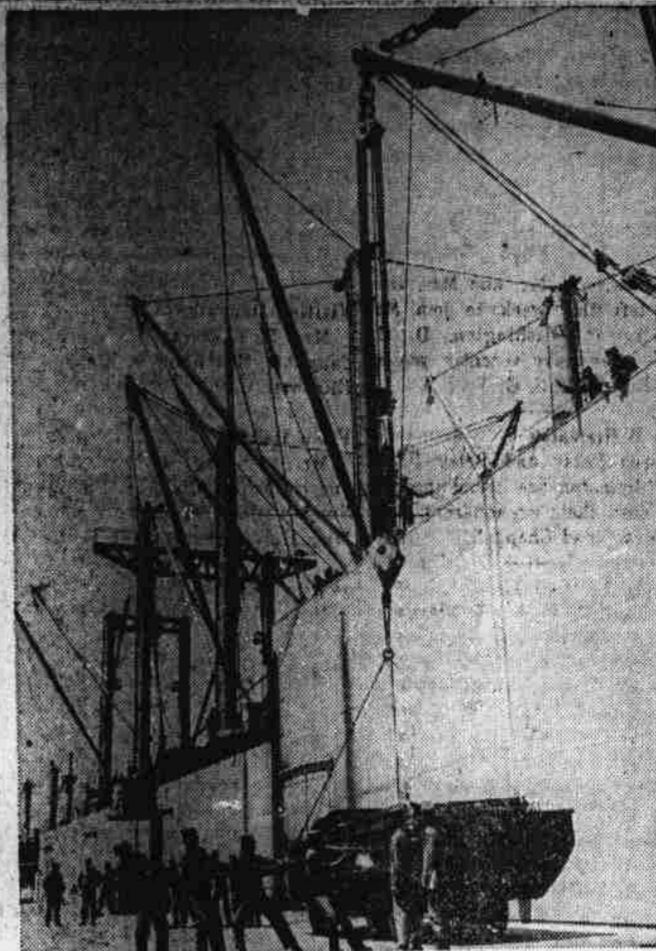
The deviates fell into two main classifications. First, those who are likely candidates to appear in juvenile courts, and second, those

with withdrawn tendencies, which, if help now is not forthcoming may need expert psychiatric help in the future.

Follow up so far has been only on minor and short term scale. Conferences have been held with the teacher and the public health nurse on each deviate. Additional follow up by home visits will be done this summer by the public health nurse, for the more serious cases. Long term help is being

We Sell

Disappearing Stairways
Kitchen and Bath Tileboard
Plywood (cut to any size)
Ready-Made Cement Steps
PHONE 5401
Harris Plumbing & Building Supply Co.
Hertford, N. C.



HEAVE-HO!—With the help of a giant boom, U.S. Army stevedore troops train in proper ship-loading procedures at the Transportation Corps Center, Fort Eustis, Va. Here they load an Army "duck" on the new training ship, "Neversail," which simulates modern freighters.

planned with cooperation of Dr. Fing, psychologist with the State Board of Education. He is planning a variation of the human relations courses to be taught by the teachers as part of their health teaching. Immediate results, of course, will not be noticed.

So far, of the 424 deviates in a three month interval, five have shown up as delinquents. Three

TIRED? SKINNY? UNDERWEIGHT?

—Try—
Wate-On
GUARANTEED to make you gain weight or your money back.
Now Available
Liquid or Tablets
Come In Now
S and M
"ON THE CORNER"



SPITTIN' IMAGE—Don't let the modestly lowered lashes and smirking smile fool you. The grin's built-in on this camel at the London, England, zoo, and the demure, almost bashful look is designed to lure you within spitting distance. Then—PULL.

were teen age girls becoming pregnant. All delinquents picked up by

the police that were from schools tested showed up on the survey with increased tendencies toward juvenile delinquency. This, in itself shows the great value of the survey.

It is to be noted that this was done in the schools because that is the one place to which the child is constantly exposed. Church and home situations might show tendencies more correctly, but because of unstable conditions, reliance could not be placed here, so the schools were chosen. It is stated, also, that this in no way takes the place of the psychological case work up, but only shows to some extent the mental stability or instability of the school child.

The survey also points up, says Dr. McGuire, the vital need for a mental hygiene and child guidance center in this area.

Earning His Tip
Waiter: "Do you want the dollar steak or the dollar and a quarter steak, sir?"
Sir: "What's the difference?"
Waiter: "You get a sharp knife with the dollar and a quarter steak."
Who says he does not err, errs in conceit. —John Norden.



EVERY NEED FOR THE CANNING SEASON

Our stock of supplies for canning purposes is complete . . . come in and select your needs.

- ★ NATIONAL PRESTO CANNERS
- ★ COLD PACK CANNERS
- ★ PRESERVING KETTLES
- ★ FRUIT JARS — JAR RUBBERS
- ★ JAR TOPS — JAR LIDS

SEE AND PRICE THE FAMOUS "DEEP FREEZE" Home Freezer

We carry two models and sizes in stock and can get any size or model in two days.
"THE BEST FOR THE LEAST"

Hertford Hardware & Supply Co.
"Trade Here and Bank the Difference"
PHONE 3461 HERTFORD, N. C.

USED CARS

- 1954 Plymouth CLUB SEDAN
 - 1953 Chevrolet 2-DOOR SEDAN
 - 1953 Chrysler WINDSOR 4-DOOR
 - 1952 Dodge 2-DOOR
 - 1952 Chrysler 4-DOOR
 - 1951 Plymouth 4-DOOR
 - 1949 Plymouth 4-DOOR SEDAN
 - 1950 Ford 2-DOOR SEDAN
 - 1950 DeSoto 4-DOOR SEDAN
 - 1950 Dodge 4-DOOR SEDAN
 - 1950 Olds 88 4-DOOR
 - 1950 Ford 4-DOOR SEDAN
 - 1950 Chevrolet 3-DOOR SEDAN
 - 1949 Lincoln 4-DOOR SEDAN
- SEE US FOR BETTER BUYS IN USED CARS!

NOW Dodge costs less to buy... costs less to operate

NEW LOW PRICES! Yes, you can get famous Dodge dependability at new low prices! Most popular Dodge Truck models are the lowest priced of any leading make.

EASY ON GAS! You save in operating costs, too. Efficient Power-Dome V-8 engines, with 169 to 202 hp., are the most powerful of any leading make. They save you time, trips, fuel. Thrifty 6's available, too! All Dodge trucks are famous for long life, low maintenance.

SEE YOUR DEALER! In addition, you get a bonus in styling, safety, and handling ease with the biggest wrap-around windshield in the industry. See or phone your dependable Dodge truck dealer today!

DODGE "Job-Rated" TRUCKS
with The Forward Look

TOWE WEBB MOTOR COMPANY, INC. Hertford, N. C. PHONE 3461