

THE PERQUIMANS WEEKLY

Volume XXVIII—Number 11

Hertford, Perquimans County, North Carolina, Friday, March 17, 1961.

5 Cents Per Copy.

Decision On Bank Proposal Expected In About Ten Days

A decision on a petition of the Peoples Bank & Trust Company of Hertford, in which the bank seeks authority to operate on a five-day week plan, closing on Saturdays, is expected to be handed down by the State Commissioner of Banks in about ten days.

This was the opinion expressed by Frank Harrellson, Deputy Commissioner of Banks, who conducted a public hearing here last Monday to hear views expressed by those favoring the proposal and individuals who opposed the petition.

Some 60 to 75 persons attended the hearing, which was held in the council room at the Municipal Building with Mr. Harrellson presiding.

Opponents to the petition were called on first to express their views and these were represented by Hertford attorney C. R. Holmes, who in opening remarks stated he had been retained by a local group including merchants. He called on Charles M. Harrell, Keith Haskett, W. F. Ainsley and Dr. T. P. Brinn, all of whom expressed opposition to the bank's petition. Harrell stated the proposal, if authorized, would increase operating costs of merchants and Dr. Brinn said the matter had created a great deal of feeling, detrimental to the community, since the issue had arisen in recent weeks.

Holmes advised the hearing officer his clients had related matters to him which could not be disclosed and that the bank had circulated a petition concerning the closing for some two years but did not take definite action until the board of the local bank had been enlarged. He said his merchant clients had informed him the proposal would work hardships on them and they were not equipped to get into the banking business. He said his clients had information from Wilson and Greenville

where banks close on Saturday and that this information pointed to a loss of business to Rocky Mount where banks remained open on Saturdays.

Holmes pointed out his clients' position would melt somewhat if the bank in Edenton joined all other banks in this area in closing but Hertford merchants believed the community business would turn to Edenton if the Hertford bank closed on Saturday while the Edenton bank remained open.

He also told the presiding officer his clients' position would melt should the Banking Commission grant permission for opening of another bank in this community rather than continue the State granted monopoly.

Holmes also called upon Allan W. Mills, manager of the Chamber of Commerce to report on results of a survey ordered by the merchants committee and Mills stated he had mailed out 118 questionnaires on the question while 21 replied they favored the plan.

In countering these contentions, Attorney W. H. Oakley, Jr., representing the Peoples Bank & Trust Company, opened his remarks by stating he regretted some of the allegations made as it reflected on the bank, its officers and employees. He pointed out this bank has been serving this community for more than a half century, and has more than 3,500 depositors.

Oakley, speaking for the bank, denied anybody will be handicapped by the action requested by the bank; that the last thing the bank wants to do is hurt business in this community, and that the bank was interested in the business growth of Hertford. He said there is evidently some misunderstanding about the plan since under the proposal the bank will be open

(Continued on Page 6)

Hertford PTA Adds Support To State School Program

The Hertford Grammar School PTA met on Thursday night at 8 o'clock in the school cafeteria with Mrs. Robert Hollowell, president, presiding.

The Rev. Norman Harris, pastor of Hertford Baptist Church, presented the devotional and the minutes were read by Mrs. Marion Swindell, secretary.

Mrs. Freeman Long reported a balance of \$473.65 in the treasury.

J. T. Biggers called attention to the pamphlets which were given out at the door, "A Statement of Faith and Purpose in Education," taken from an address by Governor Sanford at the Southern Conference on Education held at the University of North Carolina, Chapel Hill, on November 21. He also gave a brief talk familiarizing the group with benefits to be derived from the educational bill to be presented at the General Assembly and urged the organization to send a resolution to our Representative instructing him to support this bill.

Mrs. J. L. Harris, study course chairman, reported a very good study course, but she was disappointed at the small attendance from the local organization.

Mrs. Charles Murray introduced Dr. Ed North, featured speaker for the evening, who presented some very interesting information on the subject, "Emotional Needs of Children."

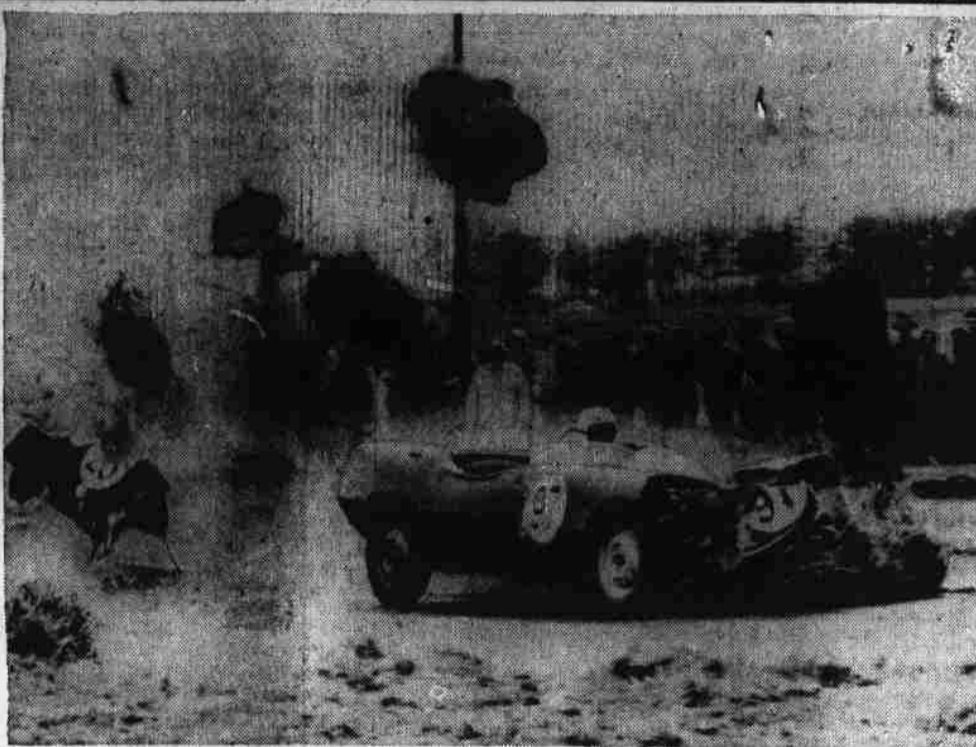
Dr. North said that the things that make up a child's life are heredity and environment. He stated the needs of a child for normal emotional development were sense of belonging, direct contact with parents, need to be needed, need for physical need, group, play, alone time and security. Some of the things that cause a child to develop abnormally emotionally are blind obedience, too much pressure, ideal physical surroundings, doesn't need too much punishment, too much protection and too much cultivation of fears, he continued.

He pointed out that statistics show there are more deaths by suicide than from TB and polio combined in the 10-14 age group.

In closing Dr. North said all nervous disorders among adults began during their childhood, due to some need which was not fulfilled.

Mrs. Hollowell authorized the secretary to send a telegram from the PTA to our Representative.

(Continued from Page 6)



ELVA COURIER—EXPLODED VIEW—A speedy Elva Courier sports car, guided by William Widdowson at a Smithfield, Tex., track race, misses a turn. Flying hay bales and flying Elva parts were captured by the camera of newspaper photographer Bob Jackson.

Perquimans Groups Back Plan For Highway 17 Improvement

Mary Phthisic To Represent County At Azalea Event

Some 40 interested citizens, including officials of the county and Hertford boards, attended a meeting here last Friday night and adopted resolutions pertaining to improvement of U. S. Highway 17 from the Virginia state line to South Carolina. County and Town Commissioners adopted similar resolutions to be forwarded to the State Highway Commission petitioning improvements of the highway, making it four-lane through Perquimans County, as well as the remainder of North Carolina.

The meeting opened with remarks by Charles M. Harrell, president of the Chamber of Commerce, who told the gathering the purpose of the conference and he then turned the meeting over to Max Campbell, chairman of the Chamber of Commerce Transportation Committee.

Campbell stated in addition to a general resolution concerning the highway, it was desired a resolution be adopted pertaining to any possible by-pass at Hertford if and when the Highway Commission carried out the improvement.

A difference of opinion arose in the meeting concerning adoption of a specific route for this by-pass but after a number of persons, including members of the official boards, Dr. T. P. Brinn, John Costen, W. W. White, W. F. Ainsley, A. H. Edwards, Keith Haskett, James T. Newby and others had expressed views on the matter the situation was referred to the members of the Town Board and County Commissioners for official action.

The boards approved a resolution requesting the Highway Commission, in event a by-pass is established, to select a route lying somewhere between Edenton Road Street in Hertford and Cedar Stretch road.

Gala plans are being formulated for the Azalea Festival which will have Miss Lynda Johnson, daughter of Vice President Johnson, as Queen this year.

The boards approved a resolution requesting the Highway Commission, in event a by-pass is established, to select a route lying somewhere between Edenton Road Street in Hertford and Cedar Stretch road.

Gala plans are being formulated for the Azalea Festival which will have Miss Lynda Johnson, daughter of Vice President Johnson, as Queen this year.

The boards approved a resolution requesting the Highway Commission, in event a by-pass is established, to select a route lying somewhere between Edenton Road Street in Hertford and Cedar Stretch road.

Gala plans are being formulated for the Azalea Festival which will have Miss Lynda Johnson, daughter of Vice President Johnson, as Queen this year.

The boards approved a resolution requesting the Highway Commission, in event a by-pass is established, to select a route lying somewhere between Edenton Road Street in Hertford and Cedar Stretch road.

Gala plans are being formulated for the Azalea Festival which will have Miss Lynda Johnson, daughter of Vice President Johnson, as Queen this year.

Town Board Votes Rate Reduction To Power Consumers

This Week's Headlines

Reaction to Governor Sanford's tax proposal set in following a return of legislators to Raleigh on Monday and the representatives had an opportunity to confer over home-town opinion which Raleigh reports point out favor the school program but varies as to ways to secure necessary funds. Biggest objection, raised over the state, is a proposed tax on foods.

Efforts will be made, reports say, to offer substitute tax measures to maintain some exemptions in the sales tax structure. Governor Sanford has been reported as being agreeable to such changes so long as the Legislature finds the money for the school program.

President Kennedy has called for a 600-million dollar program as an aid to Latin America as a step toward rebuilding a "good neighbor" policy in that part of the world. The President outlined his program to representatives of all Latin American countries at a conference in Washington Monday night.

Secretary of Commerce Luther Hodges this week announced there are indications pointing to improved economic conditions throughout the nation in the near future. The secretary was quoted as saying he saw signs that the depression has hit bottom and an upturn may be expected for both employment and industry.

North Carolina farmers realized a record high gross cash income of \$1,089 million from marketings of agricultural commodities and from government payments in 1960, according to the North Carolina Crop Reporting Service.

This total is 11 per cent above gross cash income of \$979 million in 1959 and exceeds by more than 4 percent the previous record of \$1,044 million received in 1958. The 11 percent increase in total cash receipts was due primarily to larger receipts from tobacco, corn, peanuts, broilers, dairy products, hogs, and eggs. Receipts from cattle and cotton were smaller than the preceding year.

In terms of percentage increase in total cash receipts, the 11 percent gain in North Carolina during 1960, as compared with 1959, led all important agricultural states of the nation. Cash receipts from farm marketings for the country as a whole in 1960 were 2 percent greater than in 1959.

The 1960 cash receipts from sale of crops amounted to \$765.6 million, exceeding 1959 receipts by 14 percent. Receipts from sale of livestock and livestock products amounted to \$210.4 million, up 4 percent from the preceding year. Government payments contributed \$12.8 million in 1960, compared with \$10.6 million in 1959.

When allowance is made for items consumed on farms and for rental value of farm dwellings, the realized gross income per farm is calculated at \$4,811. This exceeds by \$285 the previous record of \$4,526 for 1958.

Production expenses have increased rather consistently for several years, taking increasingly large bites of total gross income. Although production expenses in 1960 were not materially different from those in 1959, these expenses were two-thirds greater than those for 1949. When allowance is made for production expenses in 1960, the realized net income is calculated at \$2,274 per farm, exceeding each year since 1951 when the average was \$2,273.

Offsetting to a considerable degree the benefits derived from some increase in net income per farm is the continuing increase

in cost of items required by farmers in family living. The family living index in 1960 was at a level 20 per cent above that for 1949. In terms of purchasing power, therefore, the realized net income of \$2,274 per farm in 1960 was equivalent to only \$1,895 at 1949 price levels. Although above each of the three years immediately preceding, the adjusted realized net income per farm in 1960 was below each year from 1950 to 1956, inclusive, and was just about equal to the average adjusted net farm income for the past ten years.

Perquimans Union PTA Meeting Mon.

The Perquimans County Union School Parent-Teacher Association held its March meeting Monday evening, in the auditorium with James Turner presiding.

Following the reading of the minutes, a report was made of the sale of membership tickets. J. A. Dempsey, principal, announced the events on the school calendar and related some of the policies of the school to the parents.

At the close of the business session, the Queens' Rally began. Parents representing the months of the year formed a procession and marched to tables on which were appropriate motifs symbolic of their month and received contributions from persons born in the month they represented. Participating in the rally were Mesdames Rosa Armstrong, Esther Hunter, Mildred Lightfoot, Katie Johnson, Lucy Johnikins, Mae Parker, Herbert Boyce, Anna Washington, Beulah Moore, Geraldine Wiggins and Earline Sellars. Prizes were awarded to Mesdames Beulah Moore, Herbert Boyce and Rosa Armstrong for having raised the highest amounts of money. A total of \$213.27 was realized from the rally.

A basketball game between parents has been scheduled for March 21 at 7:30 P. M. Refreshments were served before dismissal.

Electric power consumers of the Town of Hertford got good news Monday night when the Town Board voted a reduction in rates, effective April 1, on charges to residential users. Commercial users, it was announced, will receive a similar reduction possibly by May 1.

The rate reduction voted by the board will amount to about 10 percent for current bills, according to Mayor V. N. Darden, who stated the board has conducted a study of electric rates during the past two months and has arrived at what is considered a rate schedule in line with charges made by other power suppliers in this area.

Rate changes are not as yet complete for commercial users but Mayor Darden stated the study of this schedule is being made by members of the Town Board, and it is hoped the reduction for this category can be announced by the next meeting of the board.

Other matters handled during the meeting of the commissioners Monday night included granting permission to Frank Jessup to construct a walkway between his pier and the town's pier at the foot of Grubb Street.

The board also authorized the Mayor to set up loading zones for the National Furniture Company and Robertson's Cleaners since these two business houses have no rear entrances for loading and unloading. The board also voted to rescind the taxi stand zone at the corner of Church and Market Streets.

Acting on a request from the League of Municipalities regarding the Town of Hertford's position concerning the proposed tax plan offered by Governor Sanford, which will under the proposed plan require town and county governments to pay a sales tax on purchases, the Hertford Board went on record opposing the abolition of the exemptions now given to local government units.

Goodwin Funeral Conducted Sunday

Funeral services for Ernest Leroy Goodwin, 75, who died Friday morning at his home on Route 1, following a short illness, were conducted Sunday afternoon at 2:30 o'clock in the chapel of the Swindell Funeral Home by the Rev. Bryan Holloman of Ivor, Va., former pastor of the Bethel Baptist Church, assisted by the Rev. A. H. Hammett, pastor of the Bethel Baptist Church.

"Sweet By and By" and "The Old Rugged Cross" were sung by Carroll Williams, Tommy Byrum, Lester Keel and Pete Riddick, accompanied by Mrs. J. Ellie White, organist.

The casket pall was made of Easter lilies, white mums, red carnations, baby's breath and fern.

Pallbearers were Alvin Phillips, O. C. Long, Blake M. Weston, Tom Weston, E. J. Proctor, Jr., Phillip Phillips, John Broughton, Jr., and Frank Hollowell.

Burial followed in the Bethel Baptist Church cemetery.

Mr. Goodwin, a native and lifelong resident of Perquimans County, was a retired farmer, a member of the Bethel Baptist Church, and the son of the late John A. and Mrs. Olivia Benton Goodwin.

Surviving are his wife, Mrs. Mae Phillips Goodwin; two daughters, Mrs. Stella Rowland of Norfolk and Miss Blanche Goodwin of Route 1, Hertford; one son, Leroy Goodwin of Route 1, Hertford; one grandson, Leroy Goodwin, Jr., of Route 1.

TO ATTEND BANQUET

Tom Byrum, Cecil C. Winslow and Cecil E. Winslow, of Winslow-Blanchard Motor Co., will be presented Ford Motor Company's 300-500 Club award at a banquet in Virginia Beach, Va., Saturday, March 18, honoring high-ranking Ford dealers and truck salesmen in the Richmond, Va. area district.

Baptist WMU Meeting Will Be Held In Shiloh Church March 21

The 56th annual session of the Women's Missionary Union of the Chowan Baptist Association will be held at the Shiloh Baptist Church in Camden County. The meeting will be held Tuesday morning, March 21, beginning at 10 o'clock, with the afternoon session scheduled to begin at 1:30 o'clock.

Nine counties will be represented at the session, including Chowan, Gates, Perquimans, Pasquotank, Camden, Currituck, Hyde, Dare and Tyrrell.

Included in the morning session will be a discussion on the topic "We Will Give." Taking part in this discussion will be Mrs. Walter A. Ward, Mrs. T. O. Asbell, the Rev. D. C. Pryor, Mrs. Brandie Rountree and Mrs. E. A. Benton. A playlet, "Wait A Minute," will also be presented by the WMU of the First Baptist Church of Elizabeth City.

The principal speaker for the morning session will be Miss Merna Jean Hocum, of Baptist Goodwill Center at Recife, Brazil. Her subject will be "His Message Must Be Sent." She will be introduced by Mrs. Joe Webb, Jr.

The principal speaker for the afternoon session will be Miss Sara Ann Hobbs, State YWA director, who will speak on the subject, "We Will Witness Every Day."

Monthly Police Report Is Given

Hertford, Police made a total of 19 arrests during the month of February, according to a report given the Town Board on Monday night by Police Captain B. L. Gibbs. Heading the arrests made, 16 of which guilty verdicts were returned, were six drunk cases and four traffic cases.

The police department answered a total of 81 calls, investigated three accidents and arrested 75 offenders. It also reported 10 boys' delinquency incidents. The police also investigated 117 calls.

White Funeral Conducted Monday

Oscar Askew White, 46, died Sunday morning at 3:35 at his home on Route 2, following an illness of five months. A lifelong resident of Perquimans County, he was a farmer and attended the Pleasant Grove Church in Perquimans County. He was the son of the late John D. and Mrs. Elizabeth Lane White.

Surviving are his wife, Mrs. Ruth Lee Smith White; one sister, Mrs. Cora White Nixon of Route 2; six brothers, Albert White of Elizabeth City, Sidney White of Tarboro, J. W. White, J. D. White, Jessie V. White and James A. White, all of Route 2.

Funeral services were conducted Monday afternoon at 2 o'clock in the chapel of the Swindell Funeral Home by Dr. L. Sigbee Miller, pastor of the International Assembly of God Church in Elizabeth City. "Rock Of Ages" was sung by a trio composed of Mrs. Dorothy Matheson, Mrs. Madeline Boyce and Mrs. Selden Bundy. Dr. Miller sang "I Won't Have To Cross Jordan Alone." They were accompanied by Mrs. J. Ellie White, organist.

Pallbearers were Clarence Chappell, Calvin Meads, Odell Bacous, Shelton Morgan, Lawrence Perry and Ervin Trueblood.

Burial followed in the White family cemetery.

CHOSEN AS FINALIST

Hugh Raiford Copeland, Campbell College freshman from Hertford, has been selected as one of the four finalists in an oratory contest sponsored by the Forensic Society of the college.

The finalists will again approach the topic, "The United States and the World Population Problem," March 22 at the final contest with presentation of essays.

Board To Hold Special Session

Commissioners for Perquimans County will meet next Monday as a Board of Equalization and Review for the purpose of hearing complaints from property owners concerning valuations for 1961 taxes.

The meeting will be conducted in the Court House in Hertford, beginning at 10 A. M., and continuing until all persons have been heard by the Board.

Schedules Given For School Clinics

The District Health Department has announced pre-school clinics in Perquimans County will be conducted at the following schools on the dates shown: Perquimans Union School, April 10, at 8:30 A. M. at the Health Center; King Street School, Tuesday, April 11, at the school; Perquimans white school, Friday, April 14, at 8:30 A. M. at the Health Center.

Dr. J. A. Johnson, District Health Officer, urges parents to take their children to these clinics at the proper place and time.

Cancer Society Selects Officers

The Executive Board of the Perquimans County Unit of the American Cancer Society met recently and selected their officers for the new year. They are as follows: Mrs. Edward Barber, president; Mrs. Gil Underwood, secretary; Mrs. Melvin Owens, treasurer; Miss Thelma Elliot, first vice president; Joe Towne, Jr., second vice president; and Dr. A. B. Bousier, advisor.

Rites Held Sunday For Wallace Wood

Wallace M. Wood, 49, a native of Perquimans County, died Friday in Elizabeth City, where he had made his home for the past three months.

He was the son of Mrs. Zelma Hobbs Wood and the late Wallace Luke Wood. He was a member of the New Hope Methodist Church.

Surviving are his mother; his widow, Mrs. Frances Elizabeth Singleton Wood; two sons, Paul Thomas Wood of Elizabeth City and Mevlyn LeRoy Wood of Hertford; two sisters, Mrs. Sadie Wood Gibson of Elizabeth City and Mrs. Lillie Wood Walker of Windsor; a brother, W. L. Wood, Jr., of Route 3, Hertford, and one grandchild.

Funeral services were conducted at Twiford Funeral Home in Elizabeth City Sunday afternoon by the Rev. Dan Meadows, pastor of the New Hope Methodist Church. Burial followed in an Elizabeth City cemetery.

MASONRY TO MEET

Perquimans Masonic Lodge No. 106, A. F. & A. M., will meet Tuesday night at 8 o'clock.

Superior Court Term Concluded Tuesday Morning

Three divorce actions were heard at the March term of Perquimans Superior Court which adjourned Tuesday morning after the calendar of eleven cases, had been disposed of by Presiding Judge Joe Parker.

Wiley Welch was granted a divorce from Frances E. Welch, Frank Simons was divorced from Alpine Simons and Frank Payne was granted a divorce from Naomi Payne.

The court ordered a land survey be made concerning the case of Lockwood Lassiter vs. B. D. Pierce while all other cases listed on the calendar for this term were continued to later terms of court.

N. C. Farmers' Gross Cash In 1960 Exceeded 1959 Income

North Carolina farmers realized a record high gross cash income of \$1,089 million from marketings of agricultural commodities and from government payments in 1960, according to the North Carolina Crop Reporting Service.

This total is 11 per cent above gross cash income of \$979 million in 1959 and exceeds by more than 4 percent the previous record of \$1,044 million received in 1958. The 11 percent increase in total cash receipts was due primarily to larger receipts from tobacco, corn, peanuts, broilers, dairy products, hogs, and eggs. Receipts from cattle and cotton were smaller than the preceding year.

In terms of percentage increase in total cash receipts, the 11 percent gain in North Carolina during 1960, as compared with 1959, led all important agricultural states of the nation. Cash receipts from farm marketings for the country as a whole in 1960 were 2 percent greater than in 1959.

The 1960 cash receipts from sale of crops amounted to \$765.6 million, exceeding 1959 receipts by 14 percent. Receipts from sale of livestock and livestock products amounted to \$210.4 million, up 4 percent from the preceding year. Government payments contributed \$12.8 million in 1960, compared with \$10.6 million in 1959.

When allowance is made for items consumed on farms and for rental value of farm dwellings, the realized gross income per farm is calculated at \$4,811. This exceeds by \$285 the previous record of \$4,526 for 1958.

Production expenses have increased rather consistently for several years, taking increasingly large bites of total gross income. Although production expenses in 1960 were not materially different from those in 1959, these expenses were two-thirds greater than those for 1949. When allowance is made for production expenses in 1960, the realized net income is calculated at \$2,274 per farm, exceeding each year since 1951 when the average was \$2,273.

Offsetting to a considerable degree the benefits derived from some increase in net income per farm is the continuing increase

in cost of items required by farmers in family living. The family living index in 1960 was at a level 20 per cent above that for 1949. In terms of purchasing power, therefore, the realized net income of \$2,274 per farm in 1960 was equivalent to only \$1,895 at 1949 price levels. Although above each of the three years immediately preceding, the adjusted realized net income per farm in 1960 was below each year from 1950 to 1956, inclusive, and was just about equal to the average adjusted net farm income for the past ten years.