



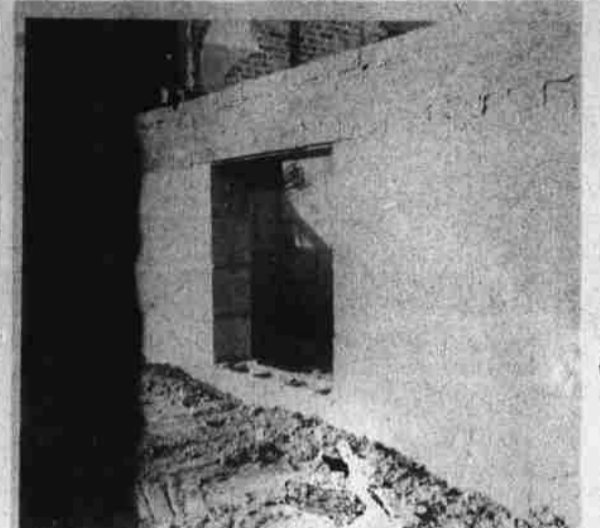
Cinder Blocks, A View From Down The Middle



Bricks Are Piled By The Dozen



Everything Must Be Even



An Escape Hatch For County Employees?

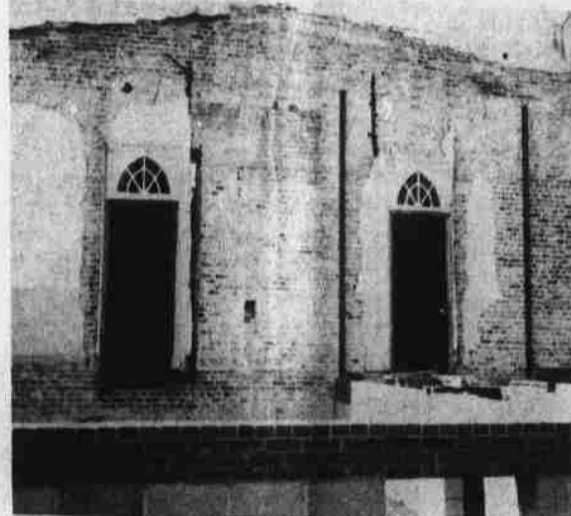
Work progresses on the Perquimans County Courthouse Annex. Here staff Photographer Kathy Marren and Francine Sawyer catch some unusual construction photos.



Some People Supervise, Such As This Gentleman



Man Is The Creative Being With Bricks



Off With The Old, On With The New

SAVING FUEL

One way farmers can conserve fuel is to make full use of wheel weights on tractors. North Carolina State University extension engineers point out that this reduces slippage when pulling heavy loads. The weights can be removed when doing lighter work.

DOUG'S AUTO & MACHINE SHOP
 Service for Volkswagen and Chrysler Products
 Complete Mechanical
 REPAIRS BY TRAINED MECHANICS
 Doug Pritchard
 Owner
 CALL 335-7059

Hollowell Chev. Co. Used Car Bonanza

Chevelles, Chevelles & More Chevelles

- 71 Chevelle Convertible, Gold, Black Top, 4 speed, SS, Mags, 30,000 Miles, Loaded, IMACULATE
 - 71 Malibu 2 dr. H.T. Gold/White top, V/8, Automatic, Air, One Local owner
 - 70 Chevelle 2 dr. H.T. SS 396, 4 speed, Midnight Blue, 32,000 miles must see to believe!
 - 70 Chevelle 2 dr. H.T. SS 396, Automatic, Cowl Induction, Tape Player EXTRA NICE
 - 70 Chevelle 2 dr. H.T. SS 396, Yellow/Black Vinyl Top, 4 speed, Tape Player, Cowl Induction, Sharp!
 - 68 Chevelle 2 dr. H.T. Black, 4 speed, 327-Nice Low Mileage Specials
 - 73 Monte Carlo, White, Black Vinyl Top, Wire Wheels, Loaded 20,000 or ilen SHOWROOM SPECIAL!!
 - 72 Chevelle or abilu 4 door 25,000 miles, EXTRA NICE
 - 70 Monte Carlo, Aqua, Black Vinyl Top, Air cond., chrome wheels, loaded 47,000 miles, 1 Local owner
 - 69 Dodge 2 dr. H.T. Air Cond. Loaded, 15,000 miles One local owner
 - 69 Chev. 4 dr. Impala, Vinyl Roof 25,000 miles SHARP
 - 66 Chev. 4 door, Impala, Loaded, 41,000 miles MUST SEE TO BELIEVE
- SPECIALS**
- 70 Simca 4 door, 27,000 miles \$925 sharp!
 - 67 Chev. Caprice Wagon 40,000 miles Air Cond, \$550.00
 - 61 Chev. Wagon 6 Cyl., Automatic, Runs Good - First \$100.00

The Perquimans Weekly

Court House Square
 HERTFORD, N.C. 27944
 Entered as second class
 matter November 15, 1934
 at Post Office in Hertford,
 N.C.

RAY WARD
 General Manager
 FRANCINE SAWYER
 News Editor

OFFICE HRS. 9 A.M. to 5 P.M.
 Monday-Friday

PHONE 426-5728



SUBSCRIPTION RATES
 ONE YEAR
 \$5.00

Published by Dear Publication
 & Radio, Inc.

BPW Meets Here

The Hertford BPW Club met Thursday night at the home of Miss Thelma Elliott, with Mrs. Billie Miller, president, presiding.

During a business session, the treasurer, Mrs. Addie White, gave a report on the candy sale held last fall, and club members present went

on record as favoring a \$100.00 scholarship to be given again this year. There was discussion concerning a Young Careerist for the current year. Hopefully, plans for this will materialize at a later date.

Miss Elliott had charge of the program and read a thought-provoking editorial on the "ifs" and "whys" of the energy crisis, after which the club members participated in a general discussion on the subject.

After adjournment, a social hour and refreshments were enjoyed.

CUT FUEL LOSS

Safety is the No. 1 priority precaution when storing fuel. Next is proper storage to minimize loss. North Carolina State University agricultural engineers suggest that farmers store fuel in a protected or shaded area. This reduces loss through volatilization.

NEW TELEPHONE DIRECTORY GOING TO PRESS

NOW IS THE TIME

To notify your Telephone Company Commercial Office of any change.

IN ADDITION

It may be an additional listing would mean someone in your home not missing an important call and proper diversification in the Yellow Pages means more money in your pocket.

THE DEADLINE

For changes and/or additions is 5:00 p.m. on January 25, 1974.

Please don't wait until the last minute.
 CALL US TODAY.

THE NORFOLK & CAROLINA TELEPHONE & TELEGRAPH CO.

NOTICE TO PEOPLE OF PERQUIMANS COUNTY LIST YOUR TAXES AT THE COURTHOUSE IN PERQUIMANS COUNTY

List every day except Wednesdays & Holidays during the month of January, 1974 from 9 A.M. to 5 P.M.

Failure to list will subject you to a penalty of ten (10) per cent of total taxes due.

CARSON D. SPIVEY, Sr.
 Tax Supervisor



GETTING READY FOR WHAT'S AHEAD

Today's farmers have now realized that one of the important phases of farming is planning. Your plans may call for purchasing additional land, clearing woodland, new equipment, or an additional to your present farm buildings or dwelling. Today's agri-businessman realizes the importance of complete farm planning, and that includes planning for the wise use of farm credit. The men at your local FEDERAL LAND BANK ASSOCIATION and PRODUCTION CREDIT ASSOCIATION are farm finance specialists with agricultural backgrounds who can provide expert assistance in helping farmers and their families plan for the coming year. As you begin getting ready for what's ahead, call or visit your local FCA or FLB representative. Their business is making your business more productive and profitable.



806 W. EHRLINGHAUS ST.
 ELIZABETH CITY, N.C.



207 E. CHURCH ST.
 ELIZABETH CITY, N.C.