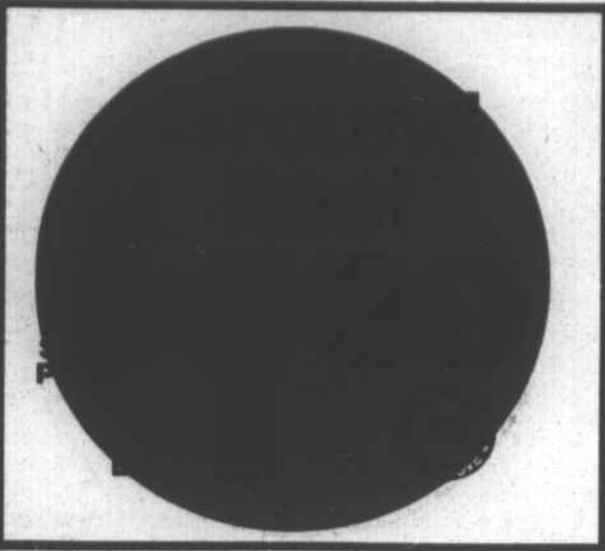


Big Star SPECIALS

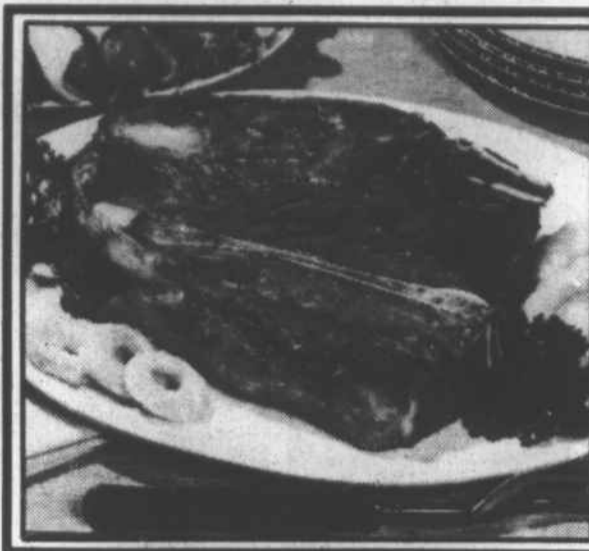
● YOU SAVE A LOT
Watch for the Red Dots in our ads and in our stores.

BIG STAR

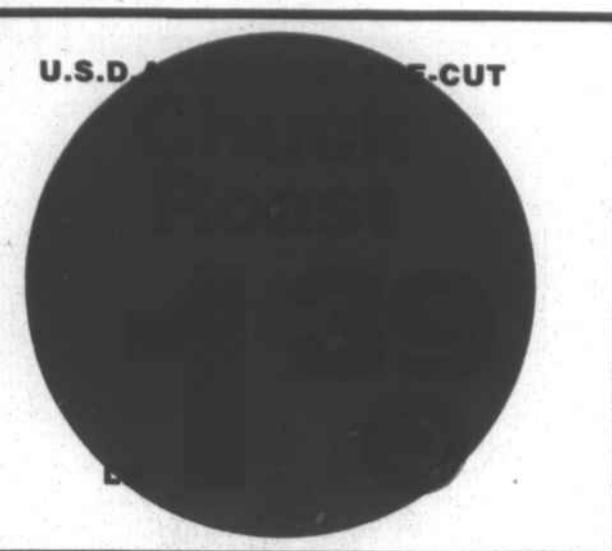
Clean, Fresh And Good
Make A Big Star



SMITHFIELD SLICED
Meat Bologna 1-LB. PKG. **1¹⁹** ●
FRESH
Pork Neckbones LB. **69^c**
FROZEN WHOLE
Pigs Feet LB. **49^c** ●



U.S.D.A. CHOICE BONE-IN
Chuck Steaks
U.S.D.A. CHOICE BONELESS
1⁶⁹ ●
LB.



U.S.D.A. CHOICE BONELESS
Chuck Steak LB. **1⁹⁹** ●
U.S.D.A. CHOICE BONELESS
Chuck Roast LB. **1⁹⁹** ●
OLDE VIRGINIE
Sliced Bacon 1-LB. PKG. **1³⁹** ●



HOLLY FARMS FROZEN
Chicken Franks 1-LB. PKG. **89^c** ●
GUNNOE
Sausage 1-LB. ROLL **1⁵⁹** ●
GUNNOE
Sausage 1 1/2 LB. ROLL **2³⁵** ●

14 TO 17 LBS. AVG. WHOLE
Pork Loins
U.S.D.A. INSPECTED
1³⁹ ●
LB. CUSTOM CUT AT NO EXTRA CHARGE!

U.S.D.A. CHOICE ROUND BONE
Arm Roast
U.S.D.A. CHOICE BONELESS
1⁸⁹ ●
LB.

SLICED SKINLESS PARTIALLY DEVEINED
Beef Liver
99^c ●
LB.

FAMILY PACKS SAVE 5 PER LB. ON 3 LBS. OR MORE

REGULAR
Ground Chuck LB. **1⁸⁴**
U.S.D.A. CHOICE BONELESS
Stewing Beef LB. **2³⁴**
HILLSHIRE
Smoked Sausage LB. **2⁴⁴**
9 TO 15 ASSORTED
Pork Chops LB. **1⁵⁹**
U.S.D.A. CHOICE BEEF
Cube Steaks LB. **3⁴⁴**
HOLLY FARMS GRADE 'A'
Fryer Breast LB. **1⁴⁴**
HOLLY FARMS GRADE 'A'
Fryer Wings LB. **84^c**

FRESH
Chicken Livers LB. **79^c** ●
GWALTNEY MEAT
Big 8 Franks 1-LB. PKG. **1⁴⁹** ●
SMITHFIELD HEAT & SERVE COUNTRY
Ham Slices 8 OZ. PKG. **2²⁹**
OSCAR MAYER
Meat Bologna 8 OZ. PKG. **1⁰⁹** ●
OSCAR MAYER
Beef Bologna 8 OZ. PKG. **1¹⁹** ●
OSCAR MAYER BEEF FRANKS OR
Meat Weiners 1-LB. PKG. **1⁹⁹** ●
ARMOUR STAR CHICKEN FRIED
Beef Patties LB. **1⁵⁹** ●
SMITHFIELD HOT OR MILD
Sausage 1-LB. ROLL **1⁰⁹** ●

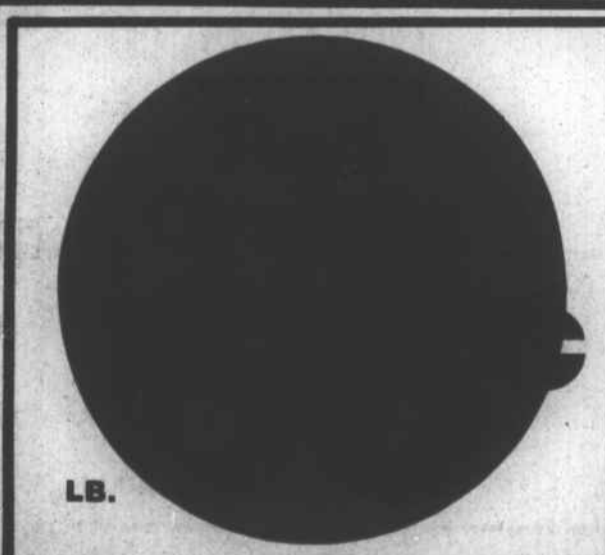
FROZEN MEATS & SEAFOOD

MRS. PAUL'S CRUNCHY LIGHT BATTER
Fish Fillets 1-LB. PKG. **2¹⁹** ●
MRS. PAUL'S CRUNCHY LIGHT BATTER
Fish Sticks 14 OZ. PKG. **1⁹⁹** ●
BANQUET BUFFET SUPPER
Beef Stew 2-LB. PKG. **2³⁹**
BANQUET BUFFET SUPPER
Stuffed Peppers 2-LB. PKG. **2⁷⁹**
BANQUET BUFFET SUPPER STUFFED
Cabbage 2-LB. PKG. **2⁶⁹**
HI-LINER OCEAN
Perch Fillets 12 OZ. PKG. **2⁰⁹**
HI-LINER FILLETS
Flounder 12 OZ. PKG. **2⁶⁹**

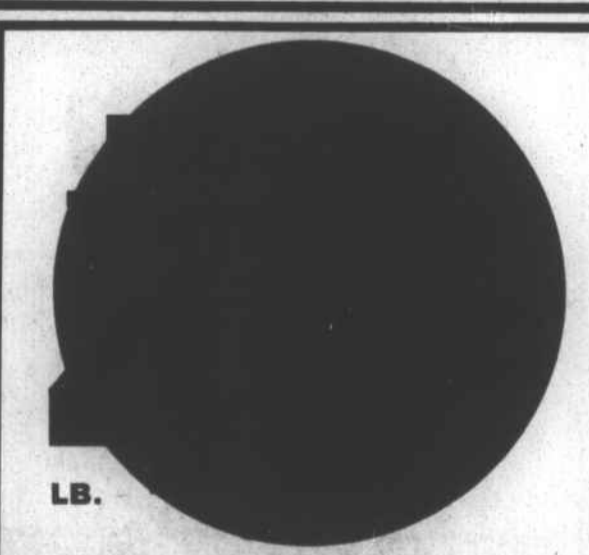


You've got your own butcher at Big Star.
We cut as you need it, so the meat's fresh, tender and bright. You have lots of choice, but our meat doesn't sit and sit and wait for you. We're proud of our meat. It's as close to the range as we can get. In fact, we date it for freshness; look on your package. Your butcher is right there to help. He'll advise and counsel with you, fill your order, large or small.

FRESH FRUITS & CRISP VEGETABLES



KALE OR
Collard Greens LB. **49^c** ●
WESTERN GOLDEN DELICIOUS-SIZE 113'S
Apples 2 LBS. **99^c** ●
IDAHO BAKING
Potatoes 3 LBS. **99^c** ●
PINK OR WHITE SEEDLESS-SIZE 36'S
Grapefruit 4 FOR **99^c** ●



CRISP
Crunchy Carrots
2⁵⁹ ●
LB. BAG



FANCY
Mushrooms QT. **99^c** ●
ROMAINE, CHICORY OR ESCAROLE
Fresh Greens LB. **69^c** ●
CRISP & SPICY RED
Radishes 3 6 OZ. BAGS **99^c** ●
KRAFT
Orange Juice HALF GAL. **1⁶⁹** ●

HEALTH & HOME NEEDS

30" OFF LABEL, MOUTHWASH
Signal 24 OZ. BOT. **1⁹⁹** ●
JOHNSON & JOHNSON WAXED
Dental Floss 50 YD. CTN. **99^c**
DX CAVITY FIGHTING
Toothbrush EACH **99^c** ●
30" OFF LABEL, REG. OR UNSCENTED
Secret Solid 2 OZ. PKG. **1⁷⁹** ●
JOHNSON'S TODDLER
Diapers 12 CT. PKG. **2⁰⁹** ●
20" OFF LABEL, TOOTHPASTE
Close-Up 5.4 OZ. TUBE **1²⁹**

ENHANCE
Hair Conditioner
1⁴⁹ ●
8 OZ. BOT.

WIN \$2-\$5-\$10-\$100-\$1,000 EVEN...

\$2,000*

Race	Number of Winners	1 Star Win Per Week	3 Star Win Per Week
1	1,000	1 in 101	1 in 33
2	494	1 in 184	1 in 288
3	44	1 in 12,100	1 in 4,367
4	15	1 in 37,829	1 in 12,676
5	3	1 in 174,657	1 in 58,222
6	1	1 in 573,900	1 in 181,667

PAY OFFS EACH WEEK
First Race.....\$2
Second Race.....\$5
Third Race.....\$10
Fourth Race.....\$100
Fifth Race.....\$1,000
*Daily Double.....\$2,000

***DAILY DOUBLE**
Any individual game ticket with winners of first & fifth races, wins the Daily Double-\$2,000.

ALL ITEMS OF **SilverStone**
NOW **ON SALE**
FOR A LIMITED TIME ONLY
COMPLETE YOUR SET NOW!

Game is available in 12 Big Star supermarkets, Elizabeth City, Hertford, and Alcoa, N.C., Salisbury and Cambridge, N.D., and all of Virginia except South Boston, South Hill, Martinsville, Lynchburg, Farmville and Danville.