

# AGRICULTURE

## The cure for all catalog junkies

### Definition of a seed catalog junkie:

"Catalog junkies come from all walks of life. The disorder strikes without regard to sex, age, race or religion. A serious attack may manifest itself in the ordering and purchase of enough seeds to cover Rhode Island. Most severe in winter, it can become violently feverish as weather worsens.

"There is no cure but spring."  
"Gardens for All,"  
January 1984

•Fertilize pecan trees. Use four pounds 10-10-10 for every inch of trunk diameter.

•Get lawn mower blades sharpened. Check edges of hoes, trowels, grass clippers and hoes if necessary. No groaning, you were supposed to do it last fall, remember?

Great bargains in garden books may be obtained from Pinetree Garden Seeds, New Gloucester, Maine, 04260. Write for the free catalog, which also features seed packets with less at substantial savings. This is a boon for intensive-space gardeners.

A proper selection of peach varieties can extend your ripening season, says Wood Upchurch at State. For May and June plant "Candor," "Pekin" and "Redhaven." July brings in "Windblo," "Redskin" and "Georgia Belle." Later ripeners include "Elberta" and "Emery."

Remember: clingstones are for eating fresh and pickling. Semi-clingstones and free-stones are used for canning and eating fresh.

Two good fruit catalogs are Stark Bros., Louisiana, Mo. 63353 and Bountiful Ridge Nurseries, Princess Anne, Md. 21835.

Another tid-bit to remember is that yellow flesh varieties contain more vitamin A than white-flesh varieties.

•Plant, per year, per person: beets, ¼ packet; broccoli, 15 plants; cauliflower, 25 plants, kale, ¼ ounce, kohlrabi, ¼ ounce; leaf lettuce, ¼ packet; mustard, ¼ ounce.

New introductions for aforesaid veggies are "Red Ace" beet from Henry Field, early maturing, good for southern gardens. "Packman" broccoli from Nichols Garden Nursery and J. W. Jung has superior flavor and may be direct seeded.

"Blue Knight" kale from Twilley is ten inches high, very prolific in autumn and early winter. Vermont Seed introduces two new loose-leaf lettuces — "Red Fire," an intense red and "Green Wave," which may or may not be intense green or intense anything.

If you don't have addresses for these catalogs, let me know. I've got a list you wouldn't believe.

**BEYOND THE WEEDS**  
by  
Jean Winalow



But Seriously, Folks  
•Cut back dead stems on chrysanthemums. Divide any clumps over three years old.

## ASCS offers guidelines to farmers

(Editor's Note: The following excerpts are from the Agricultural Stabilization and Conservation Service. For more information contact Thomas L. Riddick, County Executive Director at 426-5802.)

Feed Growers Should Study Benefits of 1984 Program Participation — Growers should study these programs and think of the program as insurance against highly possible low prices on this year's production.

We have received fair prices for the 1983 crop, but this was due to drought conditions across the nation and farmers heavily participating in the voluntary program, taking out of production thousand of acres.

With fence row to fence row plantings and normal weather conditions, we could be faced with very low prices this year.

Putting ten percent of your feed grain base in the 1984 acreage conservation program is a small premium for the price and income protection you get from the feed grain program.

Sign-up is currently underway and will continue through February 24.

In addition to the reduction in risks, I think it is safe to say that corn producers who participate in the program can expect to make more money per acre than non-participants.

In fact, if the national average price for corn received by the farmers is \$2.75, the farmers who participate in the program should realize about \$28.00 more per acre on his planted acreage than the non-participant from target price guarantee alone.

Farmers who enroll in the program, leave out ten percent of his base and plant no more than 90 percent of his feed grain base is eligible for the target price of \$3.03 for corn and \$2.68 for grain sorghum.

They are also eligible for price support loans through our office. County loan rate should be approximately \$2.80 per bushel. These loans can be for grain stored on the farm or in an approved government warehouse.

Settlement can be made on the loan by the producer repaying the loan or by delivering the commodity to the government.

I strongly urge farmers to take a look at these programs, the benefits can be a lot more than meets the eye.

The program sign-up period closes February 24.

Report Changes in Farming Operations for 1984 — Farmers and landowners are asked to please report changes in ownership or farm operators for 1984 as soon as possible.

1983 Peanut Production — The production from 2753.6 acres harvested was 8,105,161 pounds for a county average of 2943 pounds per acre.

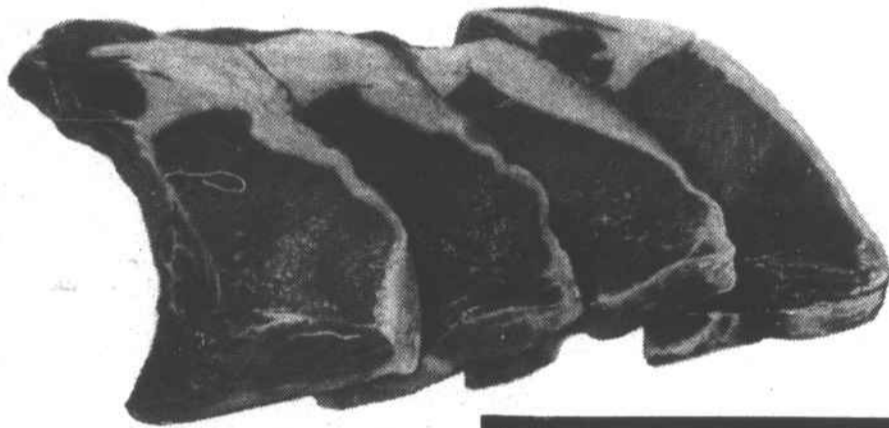
Purchases of Agricultural Land by Foreign Investors — Foreign investors shall file with the County ASCS office, serving the county in which the land is physically located, a report to show acquisition of agricultural land within 90 days of the acquisition.

Cotton Production — Farmers are reminded that they need to report their 1983 production with us immediately. This is done by having your ginner complete the Identification of Cotton Production Card.

# PHOTOS by GEORGE

WEDDINGS, FAMILY REUNIONS,  
SPECIAL EVENTS.  
COLOR & BLACK AND WHITE PRINTS  
CALL TODAY AND SET UP YOUR  
APPOINTMENT.  
**426-7274**

# Presidents' Week Sale



Quarter Pork  
**LOIN**  
SLICED

**\$1.39** LB.



Center Cut Pork Chops  
**\$1.69** LB.

**WHOLE PORK LOIN**  
(SLICED FREE)  
**\$1.29** LB.

END CUT PORK CHOPS ..... LB. 1.29  
COUNTRY STYLE BACKBONE ..... LB. 1.59  
Gwaltney Bologna ..... LB. 1.29  
PORK FEET ..... LB. 49¢  
LEAN STEW BEEF BONELESS ..... LB. 1.99  
FRESH GROUND BEEF ..... LB. 1.29

COUNTRY LINK  
**SAUSAGE**  
**\$1.59** LB.

ECON  
**COLA**  
2 LITER **59¢**

CAMPBELL  
**CHICKEN NOODLE SOUP**  
10.75 OZ. **3/\$1.00**

KRAFT  
**SHARP CHEESE**  
12 OZ. BAR **1.89**

**PORK BRAINS**  
1 LB. CUP  
**59¢**

**BOUNTY TOWELS**  
**69¢**

SKIPPY  
**PEANUT BUTTER**  
12 OZ. **99¢**

FOX DELUXE  
**PIZZA**  
10 OZ. **79¢**

TEXAS  
**ONIONS**  
3 LB. BAG **79¢**

WONDER  
**CERTIFIED BREAD** ..... 1½ LB. **49¢**  
LIBBY'S  
**POTTED MEAT** ..... 3 OZ. **4/\$1.00**  
WESSON  
**OIL** ..... 16 OZ. **99¢**  
KRAFT  
**MAYONNAISE** ..... 32 OZ. **\$1.69**

RICHFOOD  
**MARGARINE (PATTIES)**  
**4/\$1.00**  
8 OZ.

RICHFOOD  
**FROZEN JUICE**  
**89¢**  
12 OZ.

**WHITE POTATOES**  
5 LB. BAG  
**89¢**



# WINFALL SUPERMARKET

PRICES GOOD THRU FEB. 25, 1984.