

Mother Nature plays joke in the Winslow's April garden

"New month! Opening of spring buds and first flowers on the season occurred in April in ancient Italy. The Roman name "Aprilis" is derived from the Latin word "aperio" which means "open." Makes sense, doesn't it?"

BEYOND THE WEEDS
by
Jean Winslow



"Arthritis bothering your hands? Gardens for All Magazine suggest using foam rubber pipe insulation to build up tool handles.

These and other suggestions come from "Tools and Techniques for

Status of access charges

(Editor's note: This is a continuing series of articles to help consumers understand the changes taking place in the deregulated telephone industry and how these changes are affecting your telephone service.)

What Is The Status of Access Charges?

Residential and small business customers got some good news in January when the Federal Communications Commission voted to delay interstate access charges for residential and single-line business customers (end-users) until mid-1985 and to consider other changes in its access charge plan. The charges had been scheduled to become effective in April 1984.

While these end-user access charges have been delayed, they have not been eliminated. The FCC has targeted June 1985 as the new date for implementing a revised access charge plan for residential and single-line business customers.

Local service has traditionally been priced below cost with the difference covered by subsidies from other services, primarily by long-distance revenues. This subsidy from long-distance was used to hold down the price of local service, keeping it affordable for almost everyone.

But to encourage fair competition in the long-distance market, the FCC decided to unscramble this system by shifting more of the cost of "access charge" plan to shift these costs.

According to the plan, residential and business customers and long-distance companies would pay a monthly access charge to share more of the costs of the local lines and equipment that give them the capability to make and receive local and long-distance calls.

These access charges would not increase the telephone company's revenues; they are simply a redistribution of revenues. The access charge would replace the long-distance subsidy. The telephone company would get the same amount of revenue but from different sources.

The FCC now believes a more gradual introduction of access charges is needed to the transition period has been extended to 1990.

Intrastate access charges also are under consideration. The N. C. Utilities Commission, however, has refused Southern Bell's request for intrastate access charges for business and residential customers.

A final decision on intrastate access charges for long-distance companies is still pending.

"Easier Gardening" by Gardens for All, 180 Flynn Avenue, Burlington, Vt. Enclose \$3.00.

•Establish a regular spray program for fruit trees.

•Camellias can still be sprayed with Volekfor scale.

•I've found two good ways to separate seedlings for transplanting. The Pick-Up-Stick method involves using a pointed stick, such as a garden marker or a pencil to carefully dislodge one seedling at a time. Transplant as you go to avoid moisture loss.

There is also the Splat Method. Take a tablespoon of baby plants at a time, drop the mass on a board from a distance just high enough to gently separate plants on impact. Pick up one at a time and transplant in container or garden.

•Lillies-of-the-valley should be divided and reset. Fertilize with 8-8-8, bonemeal, cow manure or all of the above. Make sure soil is constantly moist yet drains well.

Convallaria is an excellent perennial for use as a ground cover in shady spots. Its aroma is one of nature's most familiar, deservedly so, I dare say.

•Check for nematodes before planting a garden area. Several companies sell fumigants, all basically the same. Fumigants

should be applied two to three weeks ahead of plant.

But I Can Dream, Can't I

Was on the go right much in March, waht with taking in Mardi Gras, business trips and the like. Finally got down to the first serious gardening since we planted spring crops back there in February. Took a stroll — where do you start after such a horrendous winter, plant-wise?

But what? As I lovingly carressed and said farewell to a camellia bud that had been blasted in December, its brown parchment fell away. Inside, a precious green gem was coming alive.

Even in total shock something directed me toward the azaleas. Leaves — there were leaves and buds on every bush — browned, if I recollect, from the white of hateful freezes in January.

Those stringy little pansies that had been stunted by late summer drought, whammed by sleet and hail, dehydrated by non-stop wind off the river — there they were, pushing through the mulch with uncommon vigor, ready to bloom better than ever.

This couldn't be. Everyone knew that it would take a little more time for yards to get going this spring. It was indeed appropriate that Easter Resurrection is late.

But on to the next bed. Why, the varigated euonymous was not that bald bush of March — fresh striated leaves glistened back at me. English boxwood in the back yard had miraculously returned from forlorn yellow to Williamsburg green.

Hollies — little white blossoms nestled under shiny leaves — there were no leaves on those

hollies when we left town. Had someone fooled Mother Nature?

Ran to the spring garden in Olympic time. Lettuce, spinach, chard stared back at me, straight against the wind, crisp and crunch. In the middle — had to rub my eyes at this point — in the middle of the vegetable patch was a row of bush snap beans.

No. Too good to be true. I hadn't even planted them yet. Pulled up the plastic marker to see what kind they

were, and as I did, the yard turned back to that sad but valiantly struggling brown again, the same brown I remembered in March when we realized there'd be no camellias this year.

Just before breaking the now useless stick in two, I finally glanced at the lettering on one side. Two words.

"April Fool."

OK, Mother Nature. We'll do it your way. Slow but sure.

Plumbing, Heating, A.C.
Electrical Contracting
Waterheaters, Sales-Service,
Sharpening Service



LLOYD R. DAIL
"ARTIFICER"
"One Call Does It All"

Call "Flutch"
264-2752

Rt. 3 Box 109
HERTFORD, N.C. 27944



Timberlake
&
Sykes, P.A.

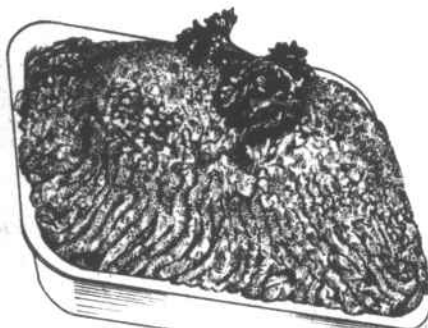
Certified Public
Accountants

110 West Market Street (Pitt Hdw.)
Hertford, North Carolina
Phone: 426-5531

Office Hours
Monday-Friday 9 A.M.-5:30 P.M.
Saturday 9 A.M.-1 P.M.

Terry L. Chappell CPA
Minnie Lee Winslow

MONEY SAVING FOOD BUYS



FRESH
GROUND BEEF
LB. 1.19

FRYER
LEG QUARTERS
LB. 49¢



meat prices

CUT TO THE BONE!

PORK FEET LB. 39¢
PORK NECKBONES... LB. 37¢
PORK TAILS LB. 39¢
PORK LIVER LB. 49¢
BONELESS STEW BEEF LB. 1.89

COUPON

Win \$50.00 Worth of Groceries at Winfall Supermarket

NAME _____
RFD or P.O. BOX _____
CITY _____ STATE _____
PHONE _____ ZIP _____

Fill in this coupon. Cut out and bring to Winfall Supermarket. Put in box on display for a drawing to be held each week. Winners will be in next week's ad. This coupon good thru Sat., April 7, 1984.

BONELESS CHUCK STEAK LB. 1.79
OLD TOWNE SMOKED SAUSAGE LB. 1.09
PORK CHITTERLINGS 10 LB. 5.99
BEEF SHORT RIBS LB. 1.59
COUNTRY SAUSAGE LB. 1.49

32 OZ. KRAFT Orange Juice 89¢
8 OZ. RICHFOOD Biscuits 4/69¢
8 OZ. RICHFOOD Margarine Patties 4/\$1.00
1/2 GAL. CROWN Ice Cream 1.39
26 OZ. DUTCH Apple Pie 1.39
8 OZ. RICHFOOD Whipped Topping 59¢
20 OZ. RICHFOOD Baby Limas 1.09
26 OZ. BOX RICHFOOD Salt 4/\$1.00
32 OZ. Mazola Oil 1.59
4 OZ. ECON Black Pepper 59¢

LAST WEEK'S WINNER OF \$50 WORTH OF GROCERIES: BERTIE TRUEBLOOD OF WINFALL

PRODUCE SPECIALS

STRAWBERRIES 59¢ PINT

FRESH CORN 5 EARS \$1.00

LETTUCE 39¢ HEAD

FLORIDA GRAPEFRUIT WHITE 5/\$1.00

32 OZ. MIRACLE WHIP Salad Dressing 1.79
32 OZ. LYNNHAVEN Mustard 59¢
18 OZ. KRAFT Barbeque Sauce 89¢
15 OZ. CAN TWIN PET Dog Food 4/\$1.00
9 OZ. LIQUID Ivory Soap 69¢
GALLON Clorox Bleach 99¢
Viva Towels ROLL 79¢
10 LB. BAG KINGSFORD Charcoal 2.49
12 OZ. RICHFOOD Drinks 5/\$1.00

WINFALL SUPERMARKET

Quantity Rights Reserved — Prices In This Ad Effective Thru April 7, 1984.

STARTS FRIDAY!

WHERE THE BOYS ARE
Call the theater for showtimes. Rated R

TANK
Call the theater for showtimes. Rated PG

Tuesday night bargain nite. Bargain matinee Sunday at 3:00 p.m.

Taylor
EDMONT, N.C.
PHONE 462-2117

COMING SOON:
Watch for our gala 1st Anniversary Grand Celebration.