

Be safe with storm cleanup

Page 2

Medicare caps services

Page 3

Schools elect SGA officers

Page 7

P5/C4  
PERQUIMANS COUNTY LIBRARY  
110 W ACADEMY ST  
HERTFORD, NC 27944-1306

# THE PERQUIMANS WEEKLY

RECEIVED  
OCT 01 2003

35 cents

October 1, 2003

Vol. 71, No. 40 Hertford, North Carolina 27944

## Isabel damage: \$153 mil.

### 95 % of homes damaged

SUSAN R. HARRIS

Preliminary estimates gathered by the Perquimans County Department of Inspections tally local losses from Hurricane Isabel at \$153 million.

The figure includes damage to both property and infrastructure.

Inspectors have determined that 95 percent of homes in the county sustained some type of damage from the Sept. 18 hurricane. Early reports indicate that 25-30 homes were completely destroyed.

Continued on page 4

### GIMPSES OF ISABEL

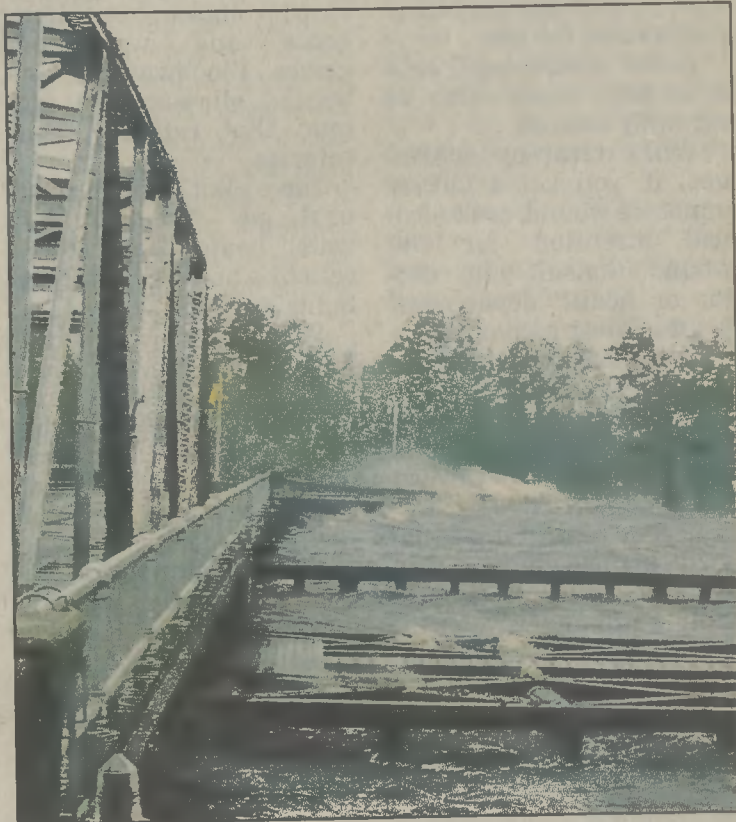


PHOTO BY DAVE SILVA

Hertford resident Dave Silva ventured out during the height of Isabel's fury to catch the river pounding over the side of the "S" bridge. The photo was taken around 3 p.m. on Sept. 18



PHOTO BY DAVE SILVA

A tree fell through the roof of this Church Street house, but not before becoming wrapped like a present in the tin from the roof.

### Help comes to town

SUSAN R. HARRIS

The Town of Hertford opened its Emergency Operations Center at the Police Department early Thursday, and many police and town maintenance and utility crews saw more of that office than their homes for almost a week.

The police department's mobile operations unit's generators powered the center.

Hertford Police Chief Dale Vanscoy said the office fielded over 500 storm-related calls, one from as far away as Australia, mostly from people concerned about family members.

In a couple of cases, officers responded to reports of break-ins of a home and vehicle, and arrived in time to catch the perpetrators.

Vanscoy said there were also 385 calls for service.

Vanscoy said he and Maintenance Supervisor Parker Newbern met on Monday before the storm and decided to purchase enough canned goods to provide food for town crews and police officers until help would arrive after the storm.

Continued on page 4

### FEMA opens center

SUSAN R. HARRIS

The State of Emergency in Perquimans County was lifted last Friday, after being in effect for just over a week.

The county has been determined to be a federal disaster area.

A FEMA Disaster Recovery Center has been set up at the Albemarle Commission Building, and began operation on Sept. 29, 8 a.m.-5 p.m.

Residents with losses from Isabel may go to the Center to make claims.

Meals continue to be served by the Red Cross at New Hope United Methodist Church and the Snug Harbor Community Building.

The Perquimans County Emergency Operations Center has reduced its hours to normal business hours. The phone number at the center is 426-7029.

A volunteer center has been established by the county. Individuals and groups who wish to volunteer to help others with such things as yard cleanup or house cleanup may call 426-8283 to offer services. Those who need assistance may also call the number.



PHOTO BY DAVE SILVA

By 5 p.m., the waves were no longer breaking over the bridge, but the water had risen to almost touch the bottom of the steel swinging span of the structure.



PHOTO BY BRENDA LASSITER

School employees prepared and served 14,000 meals for residents who lined up at Perquimans County High School the week after Isabel.



PHOTO BY BRENDA LASSITER

The roof at Perquimans County Middle School was torn off by Isabel.



PHOTO BY BRENDA LASSITER

### County loses water

SUSAN R. HARRIS

It was a little like the nursery rhyme, "Water, water everywhere and not a drop to drink."

Perquimans was inundated with water during Isabel, but the day after the storm moved through, the county lost its water. Continued on page 4

### Gregory to make recommendations

SUSAN R. HARRIS

County Manager Paul Gregory will make three recommendations to county commissioners on the county's emergency management plan at an upcoming meeting.

While Gregory said much of the plan worked, the magnitude of the

storm, which brought 100-mile-an-hour sustained winds to the county and has been called the worst storm since 1933, shows the need to update some portions of the plan.

The county manager will recommend that should another storm the size and strength of Isabel be predicted to hit here, the water from the elevated water

tanks be shut off as a precaution and that there be a mandatory evacuation of residents.

In addition, Gregory will recommend that commissioners sign an agreement with a company guaranteeing that sufficient generators to operate the water plant will be brought to the county within hours of the storm moving out.

### AEMC up and running

SUSAN R. HARRIS

All 10,800 members served by Albemarle Electric Membership Corporation were without power after Hurricane Isabel.

AEMC's Larry Johnson said crews were at the cop's headquarters in Winfall, ready to move out

as soon as the storm had passed, but Isabel's extremely high winds meant that it was unsafe for line crews to get out until early Friday morning.

EMC customers went down in part due to tremendous damage at N.C. Power's substation, Johnson said.

Continued on page 10

### WEEKEND WEATHER

THURSDAY  
HIGH: 68  
LOW: 46  
SUNNY

FRIDAY  
HIGH: 69  
LOW: 54  
MOSTLY SUNNY

SATURDAY  
HIGH: 78  
LOW: 59  
PARTLY CLOUDY