

# THE PERQUIMANS WEEKLY

"News from Next Door"

MARCH 18 - MARCH 24, 2009

MAR 18 2009

## Heart makes a house a home



DAILY ADVANCE PHOTO BY BRETT A. CLARK/PHOTO COURTESY OF TARHEEL FIREPLACE

From left, local volunteers watch clips from Extreme Makeover: Home Edition at Edenton United Methodist Church Feb. 26 in preparation for the local family whose house will be remodeled. At right, Roy Murray, of Tarheel Fireplace and Grill in Hertford, works to install a see-through fireplace for a Jamesville house being built for the Extreme Makeover: Home Edition television show.

### Volunteers across Albemarle step up when duty calls

CATHY WILSON  
STAFF WRITER

Now we know why Ty does all that screaming!

Perquimans County volunteers who helped build a house for a Martin County veteran for the ABC Network TV show Extreme Makeover: Home Edition say their work was rewarding and challenging, but also chaotic and confusing.

However, they admit that's

to be expected when hundreds of volunteers work around the clock, nearly on top of one another, in a mad push to build a house in seven days.

Ty Pennington and his design team with the popular television show converged on Jamesville last week to makeover the lives of Jeff Cooper and family.

Cooper is a wheelchair-bound disabled veteran who continues to be an advocate for veterans around the state. He and his wife have two children, including a son who lost most of an arm following an accident two years ago.

Their double-wide trailer was leaking and decaying, had bad wiring, a sinking roof and a rotting ramp.

Chowan County builder John Norris, of Edenton Builders, Inc., headed up the effort to build a new home with the help of more than 1,000 volunteers and donations from hundreds of businesses including several in Perquimans County.

Lyl Brown, owner of Planters Ridge, worked his crew to help provide the landscaping, hardscape, and flagpole for the homesite. For four days, Brown worked with Brinkley's Lawn Care of Gatesville and Four Seasons

Lawn Care of Hertford to create attractive landscaping around the property.

"The southern hospitality shown was just unbelievable," he said. "The Coopers are very blessed to have the good people of this area do so much. It's amazing to see what has been accomplished there in basically four and a half days. I think everyone should be thankful for the people who worked so hard and gave so much."

Brown said he was given 28 hours in which to get the landscaping done. In all, they worked over 60 hours to get

See HOME on Page 2



PCHS senior  
Jordan Copeland  
signs to play  
softball with  
Louisburg College

A9

35 cents

### Agriculture in Perquimans County

Based on 2002 and 2007 farm census data

	2002	2007
Farmed acres	84,456	68,468
Number of farms	193	171
Average farm acreage	489	400
Market value of production	\$38.4 mill.	\$60.1 mill.*
Government payments	\$2.6 mill.	\$3 mill.

\* Crop sales \$29.5 mill, livestock sales \$30.65 mill.

## County is losing a lot of farm acreage

### County currently in top five in state in acres lost in 2007

CATHY WILSON  
STAFF WRITER

While Perquimans County was one of five counties in the state with the largest number of acres lost in farming in 2007, the local market value of crops produced on those farms here actually increased over 50 percent.

According to the U.S. Department of Agriculture's 2007 agricultural census which is taken every five years, there were 193 farms in Perquimans in 2002. That number dropped to 171 in 2007. Farms in 2002 totaled 94,456 acres but shrunk to 68,468 acres in 2007, a decrease of 28 percent. The average size farm in 2002 was 489 acres while acreage decreased per farm in 2007 to 400 acres.

However, the market value of production jumped from \$38.4 million in 2002 to \$60.1 million in 2007 with production averages of \$351,840 per farm, a hike of 77 percent from the \$199,192 in 2002. Crop sales totaled \$29.5 million while livestock sales to-

Crop	Acres grown
Soybeans	25,261
Corn for grain	18,715
Cotton	12,024
Wheat	10,555
Peanuts	3,506

#### Sales toppers

Poultry and eggs  
Grains and beans  
Cotton

#### Foul, livestock inventory

Hogs and pigs	11,632
Cattle and calves	991
Goats	247
Layers	232

taled \$30.65 million.

Government payments in 2007 increased from almost \$2.6 million in 2002 to over \$3 million, an increase of 18 percent. The average government payment received per farm decreased about 10 percent.

North Carolina lost more than 600,000 acres of farmland from 2002 to 2007. The new census reported 8.5 million acres of farmland in the state, compared with 9.1 million acres in 2002.

"When you lose that many acres, it means that not just small farms are losing land, the large farms are shedding

See FARM on Page 3

## Wastewater wars rage on in county

### Town councils call on USDA-RD to mediate payment dispute soon

CATHY WILSON  
STAFF WRITER

The federal agency that supplied funding for the sewage treatment system in Hertford and Winfall has been asked to help resolve a payment dispute between the two towns.

Hertford officials say they are trying to resolve the issue themselves, but on March 3 notified Wayne D. Causey, area director of the United States Department of Agriculture Rural Development (USDA-RD), that his help may be needed to resolve a payment dispute between the two towns for wastewater treatment.

Winfall, on the other hand, sent Causey a letter March 5 asking for help in

resolving the matter.

Officials for both towns say they hope the matter can be resolved amicably. Hertford, however, reserves its right to have the matter settled in Perquimans Superior Court if either payment is not received or the matter isn't resolved through USDA-RD mediation.

Mayor Sid Eley said the matter is now in the hands of attorneys for both towns and that hopefully, a solution can be reached between them.

Hertford says Winfall owes them \$28,278.32 in addition to the \$16,286.82 paid by Winfall last month. Prior to that payment, Winfall had not paid Hertford for treating the town's wastewater since March 2008.

Both towns agree that Winfall owed Hertford \$34,867.25 for wastewater treatment as of Nov. 30.

Hertford has sought payment for past due bills since last summer.

Last month, Winfall cut Hertford a check for what they believe Winfall owes minus costs deducted for engineering services and equipment installed to accurately measure Winfall's wastewater volume. Winfall believes Hertford's past bills are based on inaccurate volume figures and therefore the bills themselves were inaccurate.

Hertford rejects Winfall's claim that Hertford should offset Winfall's costs.

"Pursuant to the contract, such costs are associated with the furnishing, installing and maintaining of Winfall's temporary metering equipment," Hertford Manager John Christensen wrote to Winfall Mayor Fred Yates. "The responsibility for such costs clearly lies with Winfall until Hertford has constructed its 'permanent, open channel flow type facilities.'"

Winfall, however, believes they

See WAR on Page 2

## Wedding chapel opens downtown Hertford

CATHY WILSON  
STAFF WRITER

If you're going to the chapel and gonna' get married, you

don't have to go very far.

Yours Forever, an elegant wedding chapel with all the trimmings, has opened its doors in town. Located at 110 W. Market Street, up to 30 guests can attend weddings and marriage vow renewals in the chapel that provides the classic wedding at an affordable price.

Manager Jeannie Garrett has put together just about everything a bride could want in the two-story wedding chapel. The upstairs

chapel offers a classic setting of a prayer bench before a romantic candelabra flanked by artificial flower arrangements and colorful windows. Bride's silk nosegays, groom's boutonnières, ring bearer's pillows, flower girl's baskets...even the bride's garters...can all be rented for the ceremony's use. There's even an artificial wedding cake adorned with colorful flowers available for photographing the happy couple "cutting" the wedding cake!

Garrett offers a standard wedding package as well as "a la carte" items to help provide that special occasion on a budget.

They can provide the setting, minister, candles, use of a silk bridal bouquet and boutonniere, music (extensive tape library), photographer and videographer. They will even cater a simple reception of cake, punch, nuts and mints.

See CHAPEL on Page 2



PERQUIMANS WEEKLY PHOTO BY CATHY WILSON

Jeannie Garrett (center) opened her Yours Forever Wedding Chapel on Market Street recently. Last week, the Chamber of Commerce sponsored a ribbon cutting to welcome her business to Hertford.

## Farm production awards presented

About 150 county residents attended the annual Perquimans Farm/City Banquet hosted by the staff of the Perquimans County Cooperative Extension Center and sponsored by local businesses that support agriculture.

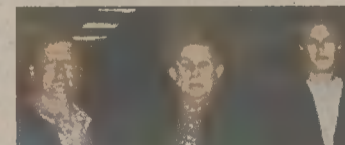
Rett Davis, retired county extension director from Alamance County entertained the audience with stories of unusual citizen requests that made his career interesting. A highlight of the evening was the presentation of production awards to growers of various crops grown in the county. The Ruritan Clubs of Perquimans County, the Hertford Lions' Club, and Southern States Cooperative, Inc. sponsored the yield awards.

Those receiving awards included:

Corn: 1st—Tommy Harrell, 199.45 bushels per acre; 2nd—Rob Woodard, 190.72 bushels per acre; 3rd—John Morgan, 173.78 bushels per acre.

Soybeans: 1st—Jason Pendleton, 60.70 bushels per acre; 2nd—Hurdle Farms, 59.08 bushels per acre; 3rd—Thomas and Wayne Rogerson, 55.37 bushels per acre.

Wheat: 1st—Ricky



Jason Pendleton, Hurdle Farms, Thomas and Wayne Rogerson



Morgan



Harrell



Roach



Winslow

Stallings, 116.65 bushels per acre (third place in the state contest); 2nd—Thomas Roach, 92.61 bushels per acre; 3rd—Chad White, 91.77 bushels per acre.

Edward Winslow, of Belvidere, was named the top peanut producer in Perquimans County at the recent Perquimans

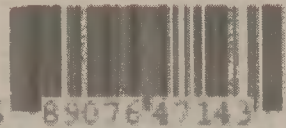
See CROPS on Page 3

### WEEKEND WEATHER

THURSDAY  
HIGH: 67 LOW: 44  
FEW SHOWERS

FRIDAY  
HIGH: 59 LOW: 45  
PARTLY CLOUDY

SATURDAY  
HIGH: 59 LOW: 44  
PARTLY CLOUDY



6 89076 47143 5