



# THE ERWIN CHATTER



Vol. IX, No. 3

MARCH, 1953

Circulation 6,000

## Cotton Offices to Merge at Durham

### All Cotton To Be Bought, Paid For From Durham; Erwin Wagon Market Ends

The cotton buying offices for Erwin Mills in Cooleemee and Erwin will be consolidated with the office at Durham after April 4. In announcing this change, President Ruffin said that the consolidation is in accordance with best modern business practice.

Erwin Mills uses over 150,000 bales of cotton a year. Before any of this cotton is bought or shipped to us, the men in our cotton office must approve it. They examine samples from each bale for color, staple, length, strength and other characteristics. "An operation of this size must, of course, be centralized," said Mr. Ruffin in announcing the merger of all our cotton buying offices.

As part of this general consolidation of the cotton buying at the main offices in Durham, the farmer's market or wagon market at the Erwin plant will also be discontinued at the end of this season. "When we established that market fifty years ago," said Mr. Ruffin, "it was needed to serve our many farm friends in the community. As the years have gone by, excellent cotton markets have developed in Dunn and other nearby centers. Now that this service to the area is no longer needed, we have decided to discontinue the market."

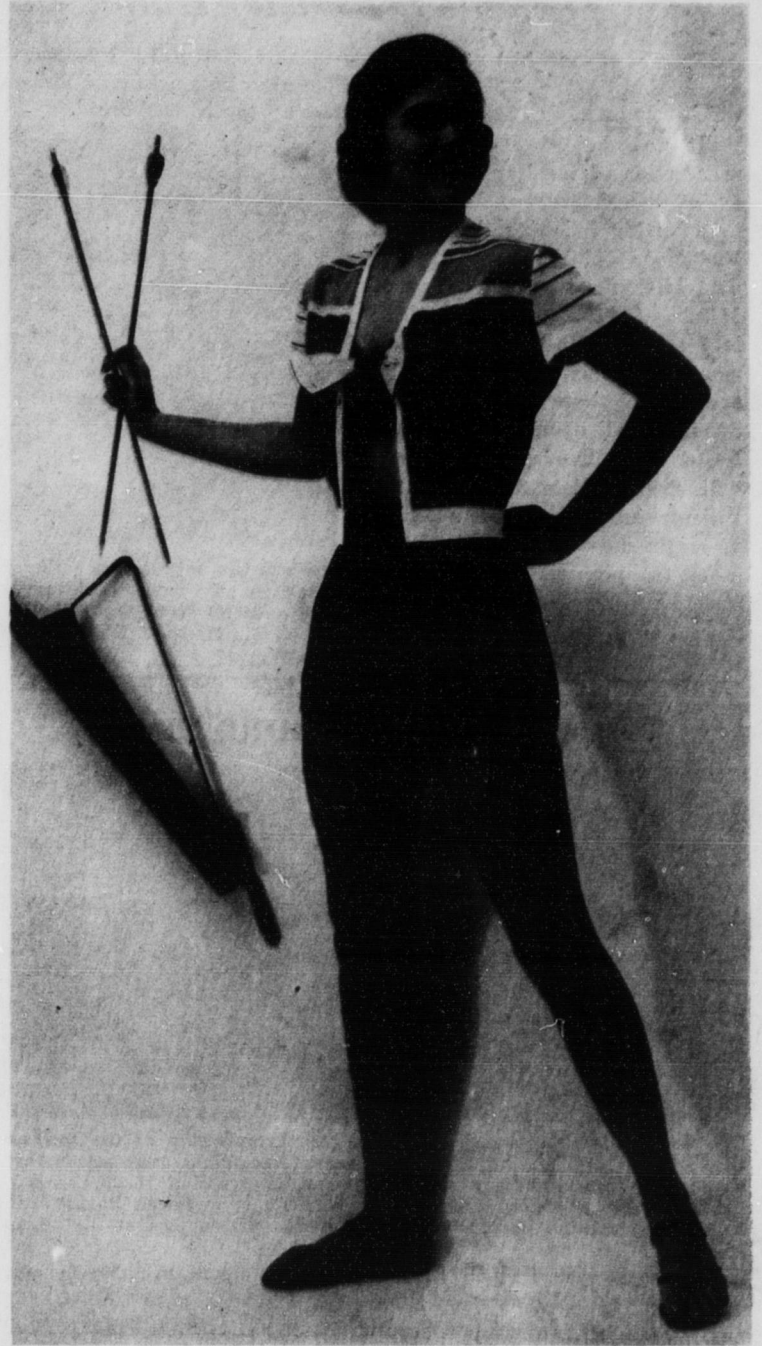
### Recreation Men Leave Auditorium

C. G. "Cocky" Bennett and Raymond Barnes have severed their connections with the recreation program at Erwin Auditorium, Durham, as of March 21. Activities at the Auditorium will continue as before and the building will remain open on the regular schedule.

Mr. Bennett, who has been in charge of Auditorium activities since 1937, has accepted a position with the Company as Supervisor of Cotton Accounting. His duties will be in connection with the consolidated cotton office at Durham.

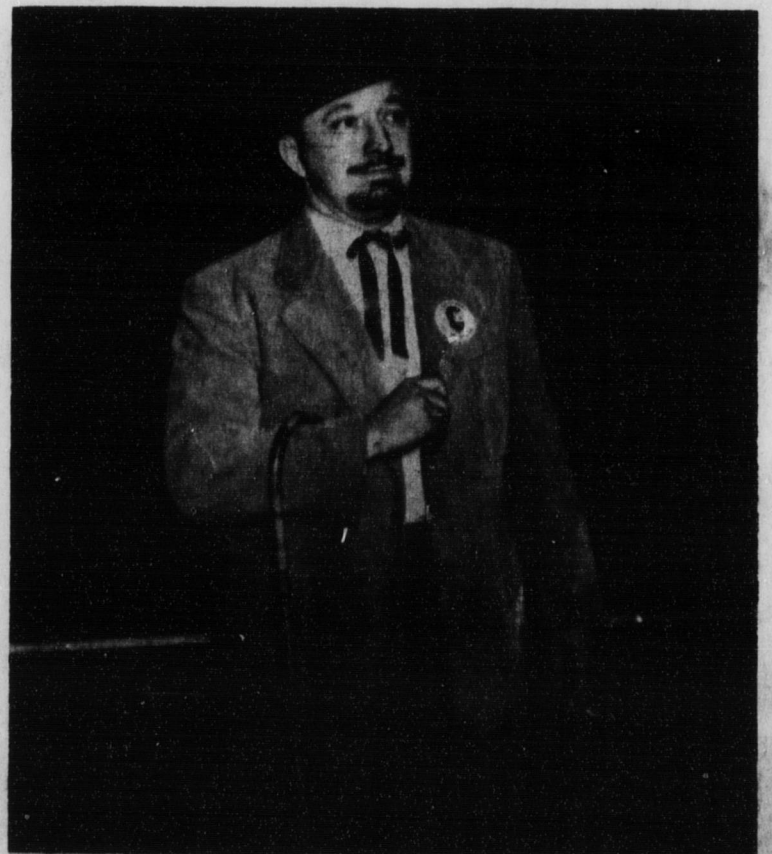
Raymond Barnes, Mr. Bennett's assistant at Erwin Auditorium, will be associated with a sporting goods company in Durham.

### MAID OF COTTON IN ERWIN DENIM

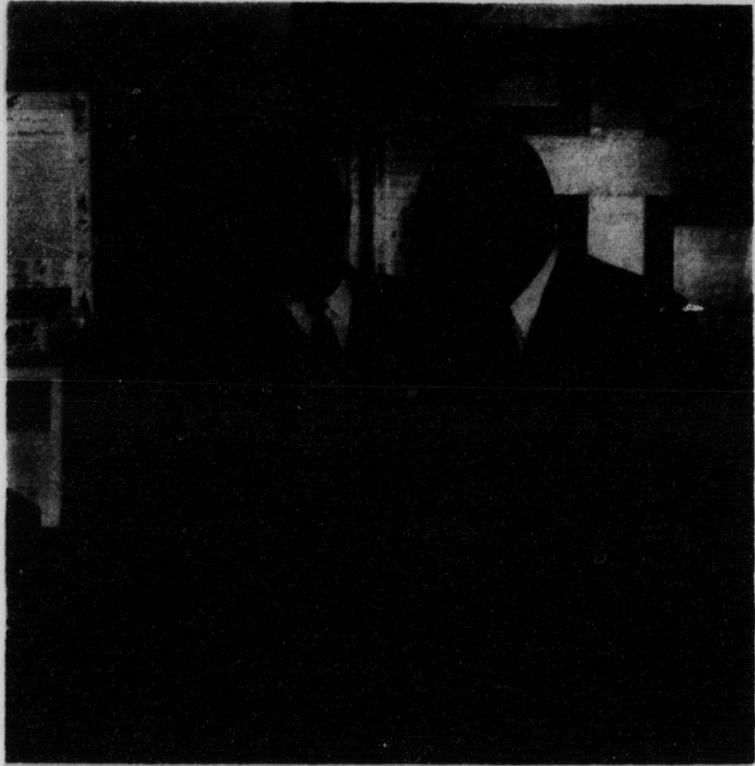


Alice Corr, the 1953 Maid of Cotton, scores a hit in a two-piece playsuit of Erwin Sanforized denim designed by Koret of California. A cotton knit jacket tops the outfit.

### BROTHER OF THE BRUSH



Jack Hamilton who is in charge of Waste Control for our Durham plants, is dressed in typical fashion for the Centennial celebration next month. Visitors to our plants must wonder what is going on when they see so many of our employees sporting beards, string ties, derbies and canes. Jack wears the official Brothers of the Brush lapel button.



E. M. Holt, right, received this luggage as a farewell gift from his fellow workers at the Durham office. He begins his duties with Cone Mills on April 1. C. R. Harris, Vice-President, made the presentation.

## E. M. Holt Leaves Job With Company March 31

### Resigns as Director of Research & Development; Had 32 Years Service

### Erwin Producing Denim With Nylon

Within the last few months, Erwin Mills has started producing nylon denim. It is a stronger cloth than 100% cotton denim and is growing in popularity with clothing manufacturers.

Nylon reinforcement in denim increases its resistance to wear and is especially good for overalls and other work garments which receive so much strain in daily use.

We are using nylon in our regular indigo-dyed blue denim as well as in several colors of our Sport-denim. Our mills at Erwin and Cooleemee are producing this cloth. It is expected to be a very important item in the denim field.

Edwin M. Holt, Director of Research and Development, has resigned his position with Erwin Mills effective March 31. He is leaving to join Cone Mills as Assistant to Clarence Cone, Vice-President of that company.

Mr. Holt has been with Erwin Mills since 1921 when he was employed at our plants in Erwin, N. C. In 1926 he moved to Durham as Superintendent of No. 1 Mill and later Superintendent of No. 4. He was Assistant Manager of the Durham plants for two years and then became Manager of the Cooleemee plants in 1934. From January 1947 until his recent appointment as Director of Research and Development, Mr. Holt was General Manager of all Erwin Mills.

### NEW ROVING FRAMES IN COOLEEMEE



Seven new Whitin roving frames are now running in No. 3 Card Room, Cooleemee. This picture was taken when the frames were being installed. They carry a ten-inch bobbin and replace H & B frames with an eight-inch bobbin. With the new frames we will be able to get a larger size package or bobbin of roving.