

Vacation Time At  
All Erwin Mills Will  
Be The Week Follow-  
ing July 4

# THE ERWIN CHATTER

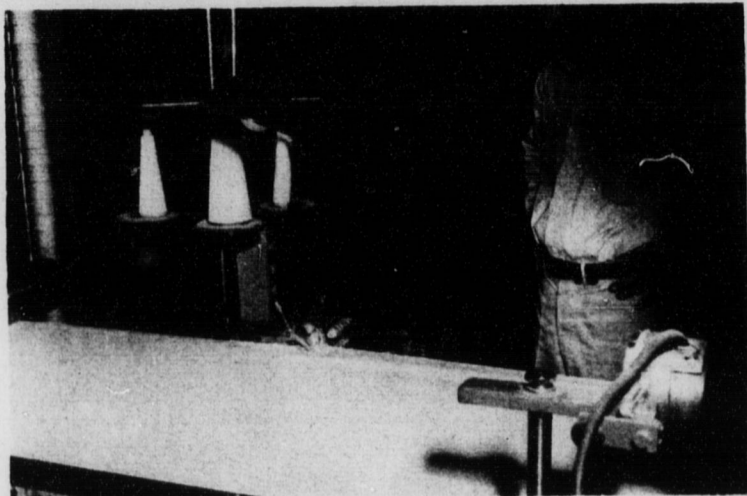
Vol. VIII, No. 8

MAY, 1953

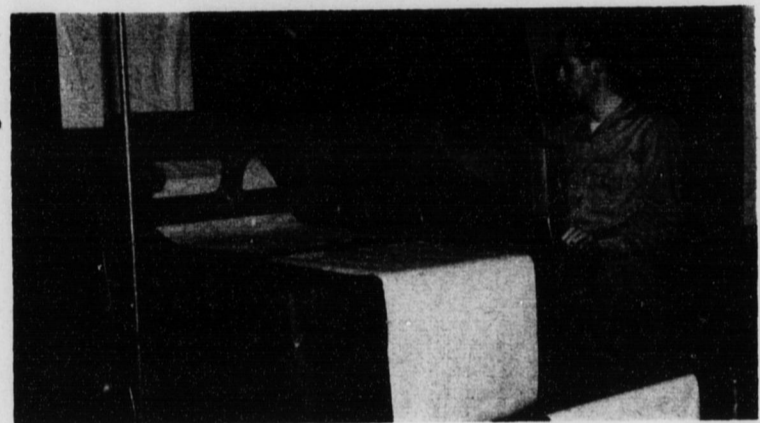
Circulation 6,000

Vacation Time At  
All Erwin Mills Will  
Be The Week Follow-  
ing July 4

## NEW PILLOW CASE MACHINES OPERATING



Huge rolls of doubled cloth are fed into this continuous sewing machine as part of the manufacture of pillow cases in our Durham plant. Donnie Shambley keeps selvage edges together as the cloth rolls into the stitcher. The folded edge of the cloth is nearest camera so that after this sewing, cloth is in form of long tube. This new machine also automatically trims the sewn edge so that finished seam is neat.

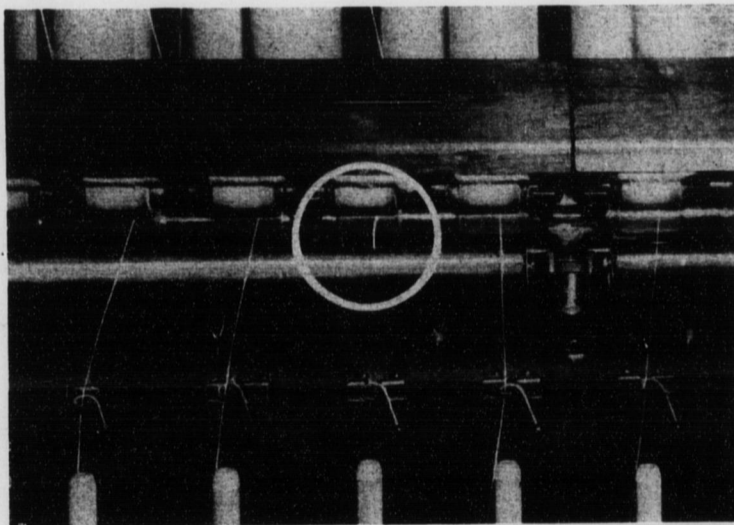


Joseph Wright inspects new pillow case cutter. This machine cuts the tube of pillow casing made by the continuous sewer into even lengths. The cases are now ready to be finished by hemming on one end and closing on the other.

## Pneumafil Added To 54 Durham Spinning Frames

Pneumafil (pronounced new-mafil) attachments have been put on fifty-four frames in No. 1 Spinning Room. When an end breaks during the spinning process, Pneumafil sucks the loose end into a tube and draws it into a Lint Collector box at the end of the frame. This eliminates the scavenger roll on a regular spinning frame.

Spinners say they like Pneumafil because it makes their job easier. They don't have so much daily cleaning to do and the regular Friday clean-up of scavenger rolls is eliminated. At first they found it harder to spot broken ends but they are getting used to the new system. The lighting in No. 1 Spinning will soon be improved to help spinners see the broken ends more quickly.



When end breaks, it is sucked into Pneumafil tube instead of collecting on scavenger roll. Circle indicates broken end drawn into tube.



▲ Carrie Christie, Spinner, pieces up broken end on frame equipped with Pneumafil. In foreground is the Pneumafil Lint Collector. Air suction draws waste into Collector box.

◀ Close-up view, inside Pneumafil Lint Collector box on end of Spinning Frame. The waste is clean, fluffy and ready to be re-run.

## Water Shortage To Be Relieved By End Of Summer At Cooleemee Mills

### M. J. Wise Joins Staff This Month

To Assist Dr. deVyver in Personnel and Industrial Relations At All Plants

Marion J. Wise, Jr., has accepted a position with our Company as Assistant to Dr. Frank T. deVyver, Vice-President of Personnel and Industrial Relations. Mr. Wise is in charge of personnel services offered to employees by Erwin Mills. This includes employment procedures, training courses, our safety program, recreation activities and publications such as THE ERWIN CHATTER. His duties also include assistance to Dr. deVyver in handling grievances, contract negotiations and other dealings with the unions. He began his work with Erwin Mills on May 8.

Mr. Wise has a long background of experience in industrial relations in both administrative and executive capacities. He came to Erwin Mills from New York City where he was consultant in industrial relations.

Born in Mobile, Alabama, Mr. Wise says that he is delighted to be back in the South again and is very happy to have joined such a progressive company in a part of the country which is going ahead more rapidly than any other.



Marion J. Wise, Jr.

### 805 New Looms in No. 5 Weave Room

All of the 805 new X-2 looms scheduled for No. 5 Weave Room, Erwin, are now in production. The job of installing the X-2's and taking out old looms began last November.

The new lighting system for No. 5 Weave Room will be completed by the end of July.

### Residents Asked To Help Conserve Water Until New Filters Are Completed

For some time the water supply at Cooleemee has not been adequate for the demands. The Cooleemee water supply system was created for the use of the mill. In addition, it is used for homes and for the swimming pool during the summer months.

### Contract Awarded

Erwin Mills has now awarded a contract for building an addition to the filter plant, and it is expected that this will give a 50% capacity increase in water when it is completed. J. L. James, Manager of the Cooleemee plants of Erwin Mills, announces that work will start this month and it is hoped it will be completed by late summer.

### Cooperation Asked

Until the new filters are completed, it will be necessary that the residents in Cooleemee use the very minimum amount of water; and the swimming pool will only be able to open on weekends in order to conserve water.

A survey of water usage in several surrounding communities revealed that the average resident of Cooleemee uses more water than average residents in other areas. Mr. James is asking each resident's cooperation to save water in every way possible and to report any breakage of water lines or waste of water.

## Cooleemee Employees Plan To Buy Company Houses

As the CHATTER goes to press, employees in Cooleemee are making arrangements to purchase Company-owned houses. The sale is being conducted by Alester G. Furman Company. This is the same

organization which handled the selling of Company-owned houses in Erwin, N. C. in 1951. Their office reports that the sale of houses is going along well.



Tom Shoaf of No. 3 Spinning Room looks over the map of Erwin Mills houses with Mr. Dillard of the Alester G. Furman Company. This scene is being repeated many times each day as employees come into the office to discuss buying their houses.



Mr. and Mrs. Baxter Carter are getting all details on buying their house in Cooleemee from a representative of the Furman Company.