

## General Motors Builds 25-Millionth Unit



Brief ceremonies were held in the Chevrolet assembly plant at Flint, January 11, marking completion of this car, the 25-millionth unit built by General Motors. In behalf of the thousands of workers who had a hand in its manufacture, 75 members of the final assembly line crew handed M. E. Coyne, Chevrolet general manager, a commemorative scroll for presentation to W. E. Knudsen, president of General Motors. Veterans Chevrolet employees, and executives of the Buick and AC Spark Plug divisions, were present as special guests.

In photo, left to right: C. E. Wetherald, general manufacturing manager, Chevrolet; Mr. Coyne; H. H. Curtice, general manager Buick Division; A. P. Sloan, Jr., chairman of the board, General Motors; Fred Brown, veteran Chevrolet employee; C. B. Mott, vice president, General Motors; C. E. Wilson, executive vice president, General Motors, and Mr. Knudsen. The car was taken at once to Detroit, to play a major part in the "March of Men and Motors" celebration staged that night in the Masonic Temple.

## Farm Families Need To Grow Own Food

Farm families probably will have a higher net income in 1940 than they had in 1939, says Miss Pauline Gordon, home management specialist of the State College Extension Service. But, unless they produce their own food the increased income will be overcome by higher costs of purchased materials, she added.

In an outlook for farm family living in North Carolina, Miss Gordon said: "Total receipts for marketing of farm products are expected to increase due to improvement in industrial activities and in consumer incomes. Income from government payments will probably be about the same. Non-farm earnings of family members may increase, with greater opportunities for employment. But, despite the improvement in economic conditions, a large percentage of the farm families of North Carolina will be faced in 1940 with the problem of stretching incomes of less than \$500 to provide for all their household needs."

Turning to the subject of "The Family's Feed, the Extension specialist declared: "Costs of producing food for household use increase less than do retail food prices, hence farm families can offset a rise in the cost of their food by planning to produce a larger than usual share of their total food supplies. Such plans, if made with nutritional as well as financial goals in mind, may also yield returns in the form of improved family diets and in better health."

"North Carolina diets as a whole are lacking in certain important foods. The lack of milk is greatest, but there is also a lack of sufficient fruits, leafy meats, poultry, eggs whole grains, and at certain seasons, fresh vegetables. Farm families should make every effort to produce the essential foods needed for good nutrition of the family."

France had 2,500,000 foreigners at the beginning of the war.

## USED FURNITURE AT BARGAIN PRICES

For Good Used Furniture such as Bed Room, Living Room and Dining Room Suits, Sewing machines, Stoves and Rugs, also odd Pieces of Furniture. PRICES RIGHT.

W. H. McGINNIS

108 Mountain St. Kings Mountain, N. C.

# TAX NOTICE

1 Per Cent Penalty on 1939 Town Taxes will begin February 1st. Pay now and save.

Charles G. Dilling,

Kings Mountain Tax Collector.

Subscribe to The Herald

It's EASY to afford

fares that average 1/2 the cost of driving

It's EASY to relax

in deep cushioned reclining chairs

It's EASY to go

by

Sample One-Way Fares	
New York	\$8.05
Washington	\$4.90
Charlotte	.50
Atlanta	\$2.90
Greenville	\$1.05
Jacksonville	\$5.20

Big EXTRA SAVINGS On Round Trip Tickets

CENTER SERVICE Phone 62

GREYHOUND Lines

## N. C. Aged Do Not Have To Buy Dues To Obtain Grants

North Carolina men and women over 50 years of age were advised this week by Nathan H. Yelton, director of public assistance, not to spend money in remitting dues to any old age pension association operating throughout the country on a chain-letter plan.

"Old age assistance payments in North Carolina cost nothing at all to those who receive them and payment of a fee to any person or organization for proffered aid in obtaining the grants is just money out of somebody's pocket," Yelton said.

"It has come to the notice of the State Welfare Department's division of public assistance that circular letters are being distributed in some counties telling "Dear Members" of their acceptance into a pension organization and thanking them for their remittances," the director said.

Along with the acceptance notices are sent five "membership registration coupons" for distribution to friends "anywhere in any state" to aid in forwarding "this great renewed surprise movement now sweeping the country with terrific force — while politicians are listening to foreign wars," was the appeal made in the letter according to Yelton.

Claiming the present Social Security Act as the direct result of its original effort and work and promising to obtain for association members monthly payments of \$50 the circular letter fails to specify directly the source of the pension funds to be available, he said.

Original application blanks mailed to the association were followed by demands for dues, Yelton said, pointing out the closing paragraph of the letter which stated the organization was "proceeding legally and ethically in the devout hope" that it would not again be singled out as the target for unjust discrimination.

"I sincerely hope the people of the state will not be taken in by any such scheme. We are enlarging our public assistance rolls and raising the grants as the money is available in accord with the Governor's admonition to take care of all the needy old people possible while still proceeding in a cautious manner to safeguard the State's finances," Yelton said.

## 6 "EXTRA" HELPS quickly relieve DISTRESS of CHILDREN'S COUGHS AND COLDS

DON'T "take chances" with unknown products to relieve discomfort of your child's spasmodic croupy coughs caused by colds. Use "Children's" Musterole! Musterole gives such QUICK relief because it's not "just an ordinary salve." Rub it well on your kiddie's chest, throat and back. It soothes and stimulates surface circulation and helps break up local congestion and pain. Its soothing vapors ease breathing. 40¢. Approved by Good Housekeeping Bureau.



## Wholesome Milk The Family Food



Yes, Golden Guernsey, the pure wholesome milk is the right milk to select for the entire family. It's good and it's good for daddy AND mother as well as for little brother or sister. So order your bottle today. Our friendly driver will be glad to leave that Delicious Golden Guernsey at your door each day.

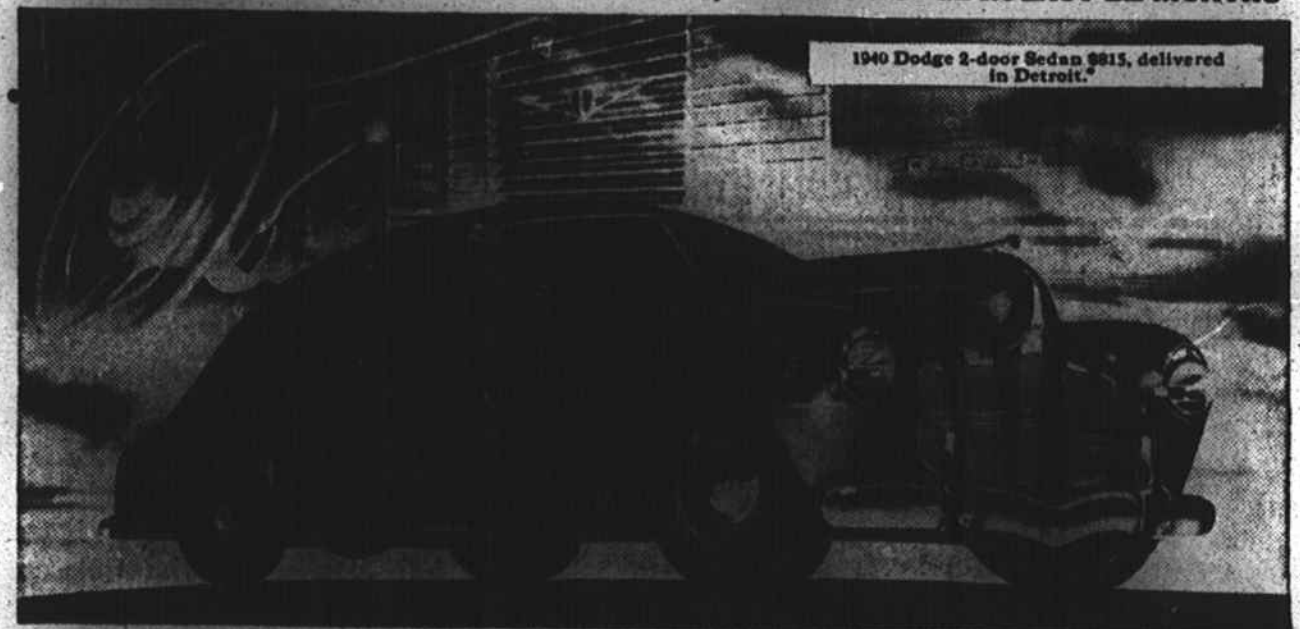
Margrace Dairy

Kings Mountain, N. C.

## MEMO TO NEW CAR BUYERS IN KINGS MOUNTAIN

# Let Us Show You Why Engineers Buy Dodge!

4,061 ENGINEERS (men who know car value) BOUGHT DODGE IN LAST 12 MONTHS!



COME IN! See and Drive the Big 1940 Dodge Luxury Liner!

ENGINEERING ISN'T MY LINE BUT I DO KNOW THAT THE 1940 DODGE IS THE LEADER IN BEAUTY AND LUXURY!

NOBODY has to tell you that the 1940 Dodge is one of the most beautiful cars ever built. Its magnificent styling, its gorgeous interiors bespeak luxury and comfort that are matchless at the Dodge low price. But Dodge gives you something more than mere surface beauty and luxury. It gives you the priceless advantages of Dodge engineering — more comfort, more roominess, more new ideas, and, above all, Dodge's traditional dependability and economy!

Is it any wonder, then, that men who know a great car show an amazing preference for Dodge? Think of it! 4,061 engineers bought Dodge cars in the last 12 months! Men whose life work is engineering say Dodge gives most for your money!

If you haven't inspected this big 1940 Luxury Liner, come in and drive it. Find out firsthand why engineers buy Dodge!



NEW FULL-FLOATING RIDE! Wheels are moved backward, seats forward so that now all passengers ride in the buoyant "Comfort Zone" between the axles!

JUST A FEW DOLLARS MORE THAN SMALL CARS!  
DODGE \$815 and up  
Coupe \$785 and up

\*ALL FEDERAL TAXES INCLUDED. These are Detroit delivered prices and include all standard equipment. Transportation, state and local taxes (if any), extra. Visit your Dodge dealer for delivered prices in your locality.

## DODGE ENGINEERING Costs Nothing Extra! Ware and Falls Motor Co.

24 N. Railroad Ave. Kings Mountain, N. C.