

Church News--

Forget figuring! You don't have to change your recipe with Rumford Baking Powder. The amount the directions call for is the right amount to use of Rumford.

Central Methodist Church
 H. C. Sprinkle, Jr., Pastor
 9:45 A. M. Church School, B. S. Peeler, General Superintendent.
 11:00 A. M. Morning Worship. Sermon: "The Bible and Human Progress."
 2:00 P. M. Junior Choir practice. Miss Carolyn Carlisle, director.
 6:15 P. M. Epworth League. Helen Tidwell, Leader.
 7:00 P. M. Evangelistic Service.
 Monday 7 P. M. Boy Scouts. J. L.

Settlemyre, Jr. Scoutmaster
 Wednesday 7:30 P. M. Prayer Meeting. "The Transforming Friendship."

Presbyterian Church
 Rev. P. D. Patrick, Pastor
 9:45 A. M. Sunday School. C. F. Thomasson, Supt.
 11:00 A. M. Morning Worship. Ordination and installation of newly elected elders.
 2:30 P. M. Sunday School at Dixon School House. J. G. Darracott, Supt.
 6:30 Young People's Vespers.

Moving pictures of the Holy Land from the days of Abraham to Allen by.
 Monday, Regular meeting of the Circles of the Auxillary.
 Monday 7 P. M. Boy Scouts. Troop One. Scoutmaster: Carl Davidson; Asst. Scoutmasters: Messrs. Harry Page and W. B. Thomson.
 Tuesday 7:15 P. M. Prayer meeting at Margrace Community House.

Boyce Memorial A. R. P. Church
 R. N. Baird, Minister.
 10:00 A. M. Bible School; J. L. McGill, General Superintendent.
 11:00 A. M. Morning Worship and Sermon: "That the World May Have the Bible."
 5:00 P. M. Vesper Service and Sermon.
 5:45 P. M. Young People's Christian Union; Miss Lois Beatty, Leader.
 7:30 P. M. Wednesday Evening Vesper Service.

Lutheran Church
 Bible school 9:45.
 Morning sermon 11:00 A. M. Sermon by Dr. P. E. Monroe, President Lenoir-Rhyne College, Hickory, N.C.
 6:30 P. M. Bible Picture will be shown.

First Baptist Church
 A. G. Sargeant, Pastor
 Sunday morning worship 11:00.
 Sunday School 9:40.
 Junior Worship 11:00.
 Intermediate B. T. U. 7:30 p. m.
 Sunday Evening worship 7:30.

GRACE METHODIST
 S. W. Johnson, Pastor
 Sunday School 9:45 A. M. Frank Greene, Superintendent.
 Morning Worship 11:00 A. M.

Epworth League 6:00 P. M.
 Evening Worship 7:00 P. M.

Park-Grace Bible Church
 John L. Gregory, Pastor
 Sunday School 9:45 A. M.
 Morning Worship 11 A. M.
 7:00 P. M. Evening Services.
 Sunday evening Service 7:00.
 Each Saturday 7:00 P. M. Evangelistic service.

Second Baptist Church
 Rev. C. C. Parker, Pastor
 Sunday School 9:45 each Sunday.
 Teaching 11 a. m. and 7:30 p. m. each Sunday.

Wesleyan Methodist
 Sunday School 9:45.
 Morning Service 11:00.
 W. Y. P. S. or Class meeting 6:15.
 Prayer Service Wednesday 7:00.
 Evening Service 7:00.

Macedonia Baptist Church
 J. V. Frederick, Pastor
 Sunday School 9:45. M. B. Caldwell, Supt.
 Morning Worship 11:00.
 Evening Worship 7:00.
 Prayer service Wednesday evening 7:00.
 All are welcomed to come and worship with us.

State College Issues New Bedding Pamphlet

Realizing that a clean, comfortable bed is a great aid to restful sleep, the State College Extension Service has issued a pamphlet entitled "The Clean and Comfortable Bed." It is Extension Miscellaneous Pamphlet No. 44, and the publication is available free upon request by name and number to the Agricultural Editor, N. C. State College, Raleigh.

Miss Pauline E. Gordon, Extension specialist in home management and house furnishings, and Miss Mable N. Whisnant, assistant specialist in the same field, prepared the pamphlet.

Care of mattresses, pillows, blankets, and comforts is stressed, and since these bedding materials are used for a long period of time, it is recommended that they be kept clean by protectors that can be laundered easily. Another point emphasized is the size of the sheets.

Nothing is more unpleasant than bedding that is too short or too narrow. Miss Gordon declares short sheets are uncomfortable since they do not protect the blank

ets and mattress. Also, they wear out more rapidly because the sleeper is always jerking them. The publication recommends that the bottom sheet be long enough to allow for a good tuck-in at the head and foot, so that the sheet will be smooth. The top sheet should allow for a good tuck-in at the foot and there should be about 18 inches to turn back over the blankets to keep them from coming in contact with the face, neck, shoulders and arms.

You Want The Best
 And You are Entitled to
 The Best When Milk Is
 Concerned



Order Your Pasteurized
 Milk Today

Sunrise Dairy
 PHONE 1468 - GASTONIA, N.C.



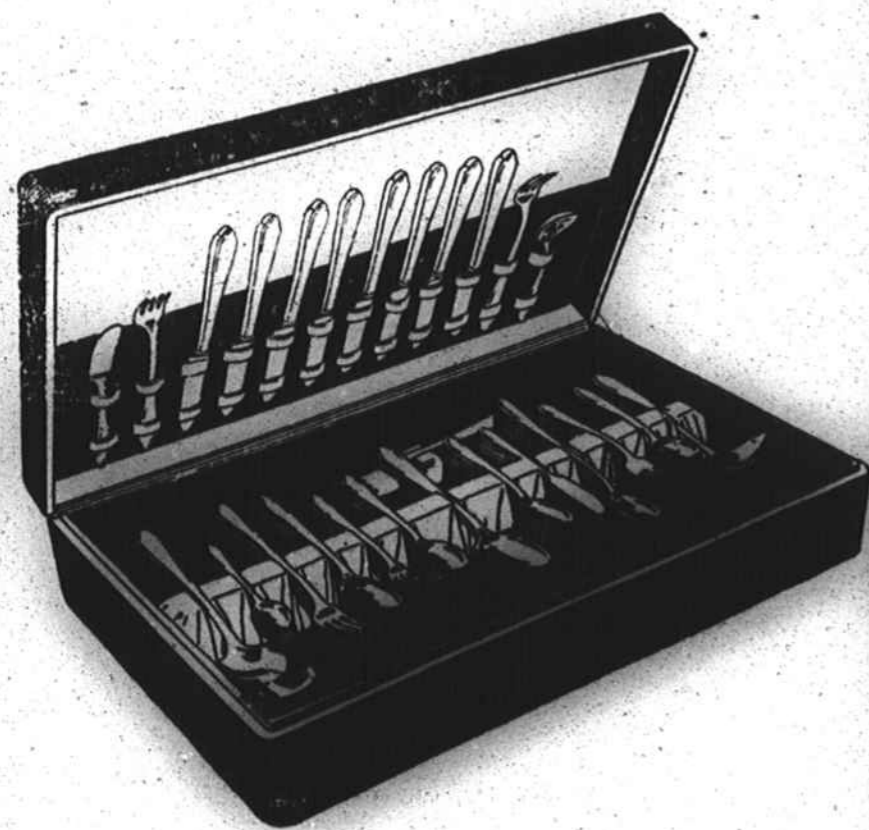
An Event You Cannot Afford to Miss!

SALE! 53 - PC. SET SILVERWARE

An Ideal Christmas Gift for the Whole Family
 You'll Be Proud Of Its Quality

Graceful CAMELIA Pattern
 In Fine Wooden Chest

\$15.95 VALUE **\$10**



HERE'S WHAT YOU GET:

- 8 Teaspoons
- 2 Table Spoons
- 8 Dinner Forks
- 8 Hollow-handle Knives
- 8 Salads
- 8 Iced Tea Spoons
- 8 Dessert Spoons
- 1 Butter Knife
- 1 Sugar Shell
- 1 Cold Meat Fork

This exceptional silverware set is made by one of the world's largest manufacturers. Be smart and buy a set for your own use and for Christmas Giving.

USE OUR LAY-AWAY PLAN

BELK'S DEPT. STORE

The Store of a 1,000 Gifts

Levi Reynolds Estate

At Auction

SATURDAY December 14

Beginning At 10:00 A. M.

Business Property

Located in the heart of Kings Mountain, 200 feet from Square, on Railroad Avenue.

FREE — XMAS TURKEYS — FREE

Easy Terms-Band Concert

WALTER & GURLEY AUCTION CO.

Kannapolis, N. C. Selling Agents

Imperial Theatre

Kings Mountain, N. C.—Phone 134

Today — Thursday
 Double Feature — Big Bargain Day 10c



Also Comedy — News

Friday and Saturday
 —Double Feature—

By Request



RANDOLPH SCOTT KAY FRANCIS
 BRIAN DONLEVY GEORGE BANCROFT
 BRODERICK CRAWFORD ANDY DEVINE
 STUART ERWIN FRANK ALBERTSON

Also Junior G-Men-Donald Duck

10c and 15c
 "Please Come Early For Seats"....

Monday and Tuesday
 The Big Hit Of The Year



"See Good Shows For Less Money"
 —WE THANK YOU—