

**The Kings Mountain Herald**  
Established 1890  
Published Every Thursday

**HERALD PUBLISHING HOUSE**  
Raymond E. Lynch  
Editor-Manager

Entered as second class matter at the Postoffice at Kings Mountain, N. C., under the Act of March 3, 1879.

**SUBSCRIPTION RATES:**  
Payable in Advance  
Two years \$8.50  
One year 4.50  
Six months 2.50  
Three months 1.25

A weekly newspaper devoted to the promotion of the general welfare and published for the enlightenment, entertainment and benefit of the citizens of Kings Mountain and its vicinity.



**PLAYING THE GAME**

We can't play a winning game. Someone is sure to lose; Yet we can play so that our name No one may dare accuse. That when the Master Referee Scores against our name, It won't be whether he's won or lost, But how we've played the game.

When I am driving on the street Where little folks I'm apt to meet Who dash across the street in play, I hope I'll drive in just the way That I would drive if mine were there. Upon that crowded thoroughfare

**CHARLES F. THOMASSON STADIUM**

The Lions Club Horse Show Monday, the first event to be held in the new stadium, brings to mind the suggestion made by The Herald that this recreation center be named in honor of the one individual who had more to do with its erection than any other person—Charles F. Thomasson. The reality of this modern stadium, which is now far from complete, is the outgrowth of a vision of the late Mr. Thomasson had in his desire to better The Best Town in The State.

Mr. Thomasson for many years was a loyal booster of the Kings Mountain Schools and all of its activities. He was a member of the School Board, Past President of the Parent Teacher Association and an ardent supporter of The School Band.

We don't know the exact procedure to bring this about, but let's see that it is done so that honor will be paid where honor is justly due.

Knowing "Charlie" as intimately as we did we are positive that he would appreciate this recognition as much as any that could be offered him.

**THE PHILADELPHIA STRIKE**

While we deplore the recent transportation strike at Philadelphia, Pa., which, by making it difficult for war workers to reach their work, interrupted the production of war materials, we are not unmindful of the fact that it resulted from the Fair Employment Practices Committee at Washington, D. C., ordering the employment of Negroes as bus drivers.

The F.E.P.C. order read:

The committee directs that the Philadelphia Rapid Transit Employees Union in the interest of the war effort shall not interpret any action or provision of its contract with the Philadelphia Transportation Co., so as to prohibit, limit or in any manner interfere with the employment or upgrading by the company of qualified Negroes in or to positions as street car or motor coach operators or conductors, motormen, guards, platform attendants and station conductors of the company's elevated or subway lines, or in or to any other job classification with the company not presently held by Negroes.

The FEPC undertook to abolish instantly a long-standing custom and to abrogate certain clearly implied and well understood terms of a contract between the transit company and the employees' union. It ordered the employees and the employer to interpret their agreement to suit the social and political concepts of the FEPC or certain persons interested in promoting racial equality between Negroes and whites.

As the result of the order Philadelphia's service was paralyzed. Business was stagnated. A large proportion of Philadelphia's 600,000 war workers was unable to travel to work. The output of such essentials for our soldiers as heavy artillery, military trucks, bombs, ammunition and motor was seriously affected. A war production center, making second in the entire country, was thrown into confusion. Racial ill will was fomented, and there were outbreaks which hardened upon sight.

The union-company contract read: Except as herein specifically recited, all rules, regulations and customs bearing on employer-employee relationship shall continue in full force and effect until changed by agreement between the parties.

FEPC ordered the union to abrogate the terms of their contract and to employ Negroes as bus drivers, and there can be little doubt that the principal purpose of the order was to promote the equality of Negroes with whites.

When John L. Lewis shut down the

**HERE AND THERE**

Raymond E. Lynch

The war in Europe is going good. Has it ever occurred to you what those battle-worn heroes mean? If we really know how precious those veterans really are, I believe most of us on the home front would exert a little more effort to do our part. A company of men comes very close to both sides of war. It is his job to keep up with the victories and the casualties. This week for example: The door to the Herald office opened and a frail little lady entered. She had a yellow envelope in her hand. She wanted to know what it would cost to put a glass in the paper about her boy. She handed me the telegram. It was one of those dreaded yellow pieces of paper that loved ones at home fear so much. It was a "missing in action" message. We talked with her, we tried to console her, but there is so little that an editor can do or say at a time like that. They usually ask, "Did you know him Mr. Lynch, he was a fine boy." Another story: The next afternoon, a young lady entered the office. She had tears in her eyes. She said, "It's about my brother. He was killed in France Aug. 7th." She said she had brought the message because her mother and father was unable to cover themselves. These victories are being made possible with the blood of Kings Mountain men. Let's pledge right now, to do everything in our power at home to shorten the days of fighting and bring to an end the possibility of receiving these messages of sorrow.

**THE DIET DOBBERS**

Hello, children! How are you all? It seems like things have sorta "bugged down" here this week. From Jackie's point of view, it could be because Noah had gone out of town. But I saw that he dated Peggy Arthur last Friday night. Guess he needed some consolation, huh! He's back in the groove again, tho, now that Noah is back. James H. and Jean Webb are still at it. I see. How'd you kids like having your fortunes told? Some fun, eh? Didn't see much of Smyre and Jackie last week. They were sparkling every night last week. Could it be that Jackie likes Smyre's company? But when you look at it the other way, she dated Henry, not only Monday night, but Tuesday night, too. Tch! Tch! Better watch out Smyre. They might start up "the old flame" again!

Enter into the limelight—Doris Phifer! I saw that your one and only was here last week end. Ed Selter, if I didn't hear the name wrong. Mighty cute fella, AND dare cute couple! Doris was all smiles, can't blame you, Doris.

Say, Deah, have you been into Jimmy much? I betcha you have! SAY—Houston, I'm pullin' for you so good luck—How's Avis and Bobby G. come along? — Who have Dick and Gene been keeping themselves? Also goes for Shimp, "Duck" and Charlie Moss? Did you see Meek and "Buncer" in the show the other night? Pat Ballard has come back home, too. Glad to see you around, Pat! I saw George T. and Betty L. table in the show the other night. Cute "steady-ers"! The same goes for Tommy and Mary Beth, except they were headed for the lake.

Now that the weather's back to normal, let's all get in the groove and "give".

So long — I'll be seein' you!

and milder, and disrupted production of war materials at a very critical time, there was a demand that striking miners who were eligible for the draft be ordered to report to draft boards for Army service.

That demand went absolutely unheeded but during the Philadelphia transportation strike it was announced that strikes eligible for Army service would be required to report to their draft boards if they did not return to their work and accept the "Negro equality" order of the FEPC.

There can be little doubt that the threat was issued more for the purpose of forcing the strikers to work with Negroes than for the restoration of the production of war goods in the Philadelphia area.

The New Dealers never seem to hesitate to use governmental force to promote their own ideas and plans.—Trade Bulletin.



**Church News**

**SECOND BAPTIST CHURCH**  
A hearty welcome awaits you at the Second Baptist Church.  
R. F. Austin, Pastor.  
Clyde Gladden, Supt. S. S.  
Sunday School 9:45 A. M.  
Morning Worship 11:00 A. M.  
R. T. U. 7:00 P. M.  
Evening Worship 8:00 P. M.  
Prayer Meeting each Wednesday evening at 8:00 P. M.  
Come and bring your neighbors with you.

**BOYCE MEMORIAL A. B. P. CHURCH**  
R. N. Baird, Minister  
10:00 A. M. Bible School,  
J. E. Gamble, Superintendent.  
11:00 A. M. There will be Morning Worship.  
1:30 P. M. The Missionary Society will meet.  
7:00 P. M. Young People's Christian Y.M.C.  
8:00 P. M. Union Services at the Methodist Church. Sermon by Rev. H. G. Fisher.

**CENTRAL METHODIST CHURCH**  
J. G. Winkler, Pastor  
10:00 A. M. Church School.  
Smyre Williams, Supt.  
11:00 A. M. Morning Worship.  
Sermon by Rev. E. M. Jones of Gastonia, N. C.  
7:15 P. M. Youth Fellowship.  
8:00 P. M. Union Worship. Sermon by Rev. Herman G. Fisher of St. Matthews Lutheran church.  
Wednesday 8 P. M. Miowelk worship.

**WESLEYAN METHODIST CHURCH**  
Paul E. Alfred, Pastor  
9:45 Sunday School.  
11:00 "Essentials of a Revival," by the Pastor.  
7:00 W. Y. P. S.  
All Wesleyan Methodists are urged to attend the Union Service at First Methodist Church at 8:00 o'clock.

**FIRST BAPTIST CHURCH**  
Sunday School 10:00 A. M.  
Morning Worship 11:00 A. M.  
Training Union 7:00 P. M.  
We cordially invite everyone to be with us at our morning worship when the Hon. O. Max Gardner and Mr. Horace Eason will be with us.  
Monday:  
Deacons meeting at the church at 8:00 o'clock.  
Gleaners' Class meeting at 8 p. m. Thursday 8 P. M. Choir practice.

**ST. MATTHEWS LUTHERAN CHURCH**  
H. G. Fisher, Pastor  
Sunday School 10:00.  
Supt. W. K. Manney.  
Morning Worship 11:00.  
Sermon by P. E. Monroe, President Lenoir-Rhyne College, Hickory, N. C.  
Luther League 7:00.  
Boy Scouts Monday 7:00.  
Senior Choir Wednesday 8:00.  
Young People's Choir Thursday 7:00.  
We Welcome You.

**FIRST PRESBYTERIAN CHURCH**  
Rev. F. D. Patrick, Pastor  
9:45 A. M. Sunday School.  
11:00 A. M. Morning Worship.  
Sermon: "The Sound of the Trumpet," by pastor.  
7:00 P. M. Sunday school and worship service at Dixie.  
7 P. M. Young People's Vespers.  
8:00 P. M. Union service at Central Methodist church.  
7:00 P. M. Monday Scout meeting of Troop One, Carl Davidson, Scoutmaster; Brenda Moss, Asst. Scoutmaster.  
7:30 P. M. Family prayer meeting at Negroes Community House.

**METHODIST BAPTIST CHURCH**  
Sunday School 9:45 A. M.  
Morning Worship 11:00 A. M.  
R. T. U. 7:00 P. M.  
Evening Worship 8:00 P. M.  
Prayer meeting Wed. 7:30 P. M.  
Rev. C. B. Babbitt, Pastor.  
W. Duhamel Ryan, Supt.  
M. L. Edwards, STU Supt.

**GRACE METHODIST CHURCH**  
Rev. W. L. Hubby, Pastor  
Sunday School 10:00 A. M. Frank Green, Supt.  
Morning Service 11:00 A. M.  
Epworth League 6:45.

**CHURCH OF THE NAZARENE**  
W. Blanchard Horns, Pastor  
10:00 A. M. Sunday School.  
Evening service 7:45 P. M.

**Tip For Saving Rain May Crops**

The latest crop report predicts that the United States' hay crop will be about four million tons less than last year's. This can mean a serious shortage of feed during the coming winter, but if every farmer will make a point and use a little more hay and roughage than he had planned, roughage will be considerably increased.

"The farmer who has considerable acreage of soybeans for seed can afford to cut a few acres of hay either this summer part of his brood or let his neighbors sacrifice their," says Ross Hale, Extension agent at State College.

"Some hay may also be harvested from crops planted for seed or for silage use."

"Lupinus planted for seed may be used in part for hay. In fact, lupinus cut for hay use has a good chance of making enough seed to harvest later. This, however, is not

**OPEN FORUM**

Kings Mountain, N. C.  
August 28, 1944.  
Dear Mr. Lynch:  
I was glad to read Mr. Horne's letter in the Open Forum. I don't know him personally but I agree with everything he said. Things are pretty bad around here. They won't pick up your truck unless you leave it right on the street and I can't do it because I am always at work, and my wife is sick in bed.  
There is one thing that I can't figure out. It couldn't be a rationnaire as they are out of season.  
Yours truly,  
Jim Jenkins.  
Phone No. 2.

Kings Mountain, N. C.  
Dear Mr. Lynch:  
I read the Open Forum last week and it made me mad. It is an outrage to run down the city government so. I think Kings Mountain is a very well run town, and our street department does a grade A job. I have just come back from an extended stay in Lincoln, and if these people think Kings Mountain is a dirty town, they should go there.  
I think Mr. Horne ought to be horse-whipped.  
Very sincerely yours,  
Bessie M. Simpkins.  
905 W. Mountain street.

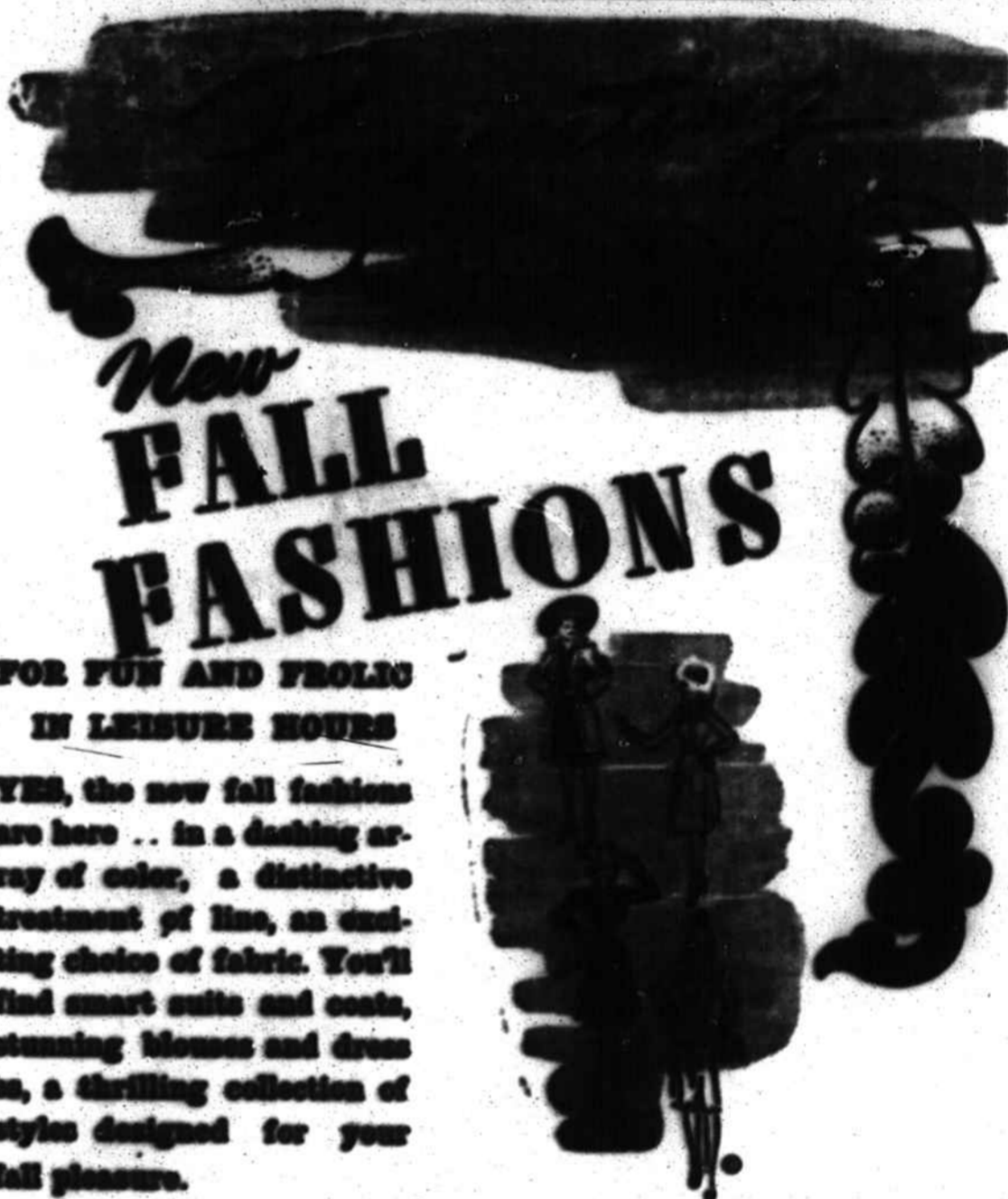
There is plenty of hay, we advise letting this material go back to the land but it is a beautiful source of emergency roughage and should be used as such when needed.  
"Any soil depletion, that results from cutting more acres of hay than usual, can be made up by planting more winter legumes this fall or more summer legumes next year."  
Homemaking, health and safety are the most popular Girl Scout training programs.

**SAVE SOME FOR TOMORROW**



YORK N. C., Aug. 28.—Three persons were injured last night when their car collided with a railroad engine here.

**10 CENTS MALARIA IN 7 DAYS**  
MALARIA 666  
Liquid for Malarial Symptoms.



**FOR FUN AND FROLIC IN LEISURE HOURS**

YES, the new fall fashions are here... in a dashing array of color, a distinctive treatment of line, an exciting choice of fabric. You'll find smart suits and coats, stunning blouses and dress on, a thrilling collection of styles designed for your fall pleasure.

**WHAT'S NEW IN**

**COLORS:**  
Beige, puffy pink, baidoroze, fuchsia, lilac, blue, gold and gray.

**FABRICS:**  
Flannel, velveteen, taffeta, ribbed jersey, basket-wave wool.

**NECKLINES:**  
Narrow scoop necks in oval and square shapes, Peter Pan collars.

**New Fall Hats to Flatter Every Hair-do**

We've the prettiest hats—to flatter every hair-do — every costume, too! See our big collection of advance Fall hats — tiny "jewel" berets, side-drape brims, half-crown cloches, slick fedoras. Choose yours here — today!

Store Closed All Day Monday, Labor Day. Open All Day Wednesday.

**Belk's Department Store**

Remember—You Always Save At BELK'S