

# Church News

**BETHLEHEM BAPTIST CHURCH**  
T. W. Fogleman, Pastor  
Sunday school each Sunday 10 a. m.  
H. K. Dixon, Supt.  
Worship, second and fourth Sundays at 11 a. m., and first and second Sundays 7 p. m.

**OAK GROVE BAPTIST CHURCH**  
T. W. Fogleman, Pastor  
Sunday school 10 a. m.  
Culp Ford, Supt.  
Worship first and third Sunday 11:00 a. m.  
Second and fourth Sundays 7:00 p. m.

**ST MATTHEW'S LUTHERAN CHURCH**  
Rev. Wm. H. Stenger, Pastor  
Catechetical class at 10 a. m.  
Sunday, January 26—  
Sunday school at 9:45 a. m. with Mr. Carl Mauney, Supt.  
The service with sermon by the Pastor at 11 a. m.  
Children of the Church 4 p. m.  
Luther Leagues at 6 p. m.  
Vespers at 7 p. m. showing the sound film "The Rich Young Ruler"  
Monday, January 27—  
Worker's Council at 7:30 p. m. Slides will be shown on "Improve Your Teaching."  
Boy Scouts at 7 p. m.  
Wednesday January 29—  
Children of the Church 3:30 p. m.  
Senior choir practice 7:30 p. m.

**TEMPLE BAPTIST CHURCH**  
Corner of Fulton and Center Sts.  
Rev. P. D. Putnam, Pastor  
Sunday—  
10:00 a. m. Sunday school.  
11:00 a. m. Preaching service.  
6:00 p. m. Training Union.  
7:00 p. m. Preaching service.  
Wednesday—  
7:00 p. m. Prayer meeting.  
A cordial invitation is issued to all who will attend.

**FIRST PRESBYTERIAN CHURCH**  
Sunday—  
10:00 a. m. Unified service of church and Sunday school in the Woman's Club building. Harry Page, Supt. of Sunday school.  
2:30 p. m. Sunday school at Friendship Chapel, Clifford Kirkus, Supt.  
3:00 p. m. Sunday school and service at Dixon. J. G. Darracott, Supt.  
6:30 p. m. Youth Fellowship Vespers in the home of Mr. and Mrs. M. Neisler.

Monday—  
7:00 p. m. Boy Scouts Troop One, Broadus Moss, Scoutmaster, JAMES PAGE, Asst. Scoutmaster.  
7:30 p. m. Circle II with Mrs. Linn ter Neisler.  
3:30 Circle V with Mrs. Philip Padgett.

**FIRST BAPTIST CHURCH**  
L. C. Pinnix, Pastor  
Mrs. J. C. Bridges, Secretary.  
Sunday—  
10:00 a. m. Sunday school.  
11:00 a. m. Morning worship.  
6:15 p. m. B. T. U.  
7:30 p. m. Evening worship.

**SECOND WESLEYAN METHODIST CHURCH**  
Jessie Henson, Pastor  
9:45 a. m. Sunday school.  
11:00 a. m. Morning worship.  
7:00 p. m. Evening worship.  
Wednesday: 7:00 p. m. Prayer service.

**MTN. VIEW BAPTIST CHURCH**  
Crowders Mountain  
Floyd Hollar, Pastor  
Sunday—  
10:00 a. m. Sunday school.  
Supt. George Leigh.  
11:00 a. m. Morning worship.  
7:30 p. m. Preaching service.  
Saturday—  
7:30 p. m. Preaching service.

**BOYCE MEMORIAL ARP CHURCH**  
William L. Pressly, Minister  
Sabath school 10 a. m.  
J. E. Gamble, Supt.  
Classes for all ages.  
Morning Service 11 a. m.  
Vesper Service 5 p. m.  
At the Vesper service the minister will speak to the young people.  
Young Peoples meeting at 6 p. m.  
Prayer and Praise service Wednesday evening at 7:30.  
Choir practice at 8 p. m.  
"You enter our church not as a stranger but as a guest of God."  
"Come and worship with us."

## Soil Conservation News

By Joe N. Craver and W. L. Shope  
Soil Conservation Service

H. A. Dover and G. N. Mullinax of Grover recently worked out soil conservation plans on their farms with the assistance of the Broad

Since these plans were made, the owners have built terraces on all of their cultivated land. Water from the terraces will empty into waterways which will be protected from washing by sericea lespedeza or kudzu. Mr. Dover says: "Properly built terraces and protected water disposal areas will go a long way toward keeping my land from washing."

The District will furnish kudzu seedlings this spring to approximately 50 farmers of Cleveland county. These farmers will plant the kudzu as a part of their farm plan as worked out with assistance from the district. As soon as soil and weather conditions permit the farmers will prepare the land for planting. Seedlings will be planted during the latter part of February and the first part of March.

J. L. Self, a farmer of near Double Shoals, seeded three acres this fall to a mixture of one bushel per acre of oats, barley and rye, plus 20 lbs. per acre of crimson clover. He ferti-

lized this with 500 pounds of a complete fertilizer. Mr. Self says: "This area has already furnished 225 days of grazing. Soon after my cows began grazing this mixture they doubled their production of milk. I consider temporary grazing such as this to be an excellent and economical source of feed."

C. N. Elam of near Fallston has several acres of permanent pasture which he seeded last fall. He secured a good stand of grass and clover which have made good growth since seeding. Mr. Elam attributes his success to proper soil preparation. He used a cultipacker in preparing the seed bed.

Wayne L. Ware, Cleveland county's member of the Board of Supervisors of the Broad River soil conservation district, urges high school students throughout the county to enter the speaking contest for Soil Conservation. F. S. Dedmon, owner of Dedmon Livestock Yards and Farm Machinery Dealer is providing prizes for the county contest.

Since 1966 the Quartermaster Corps has been assigned the responsibility of caring for proper burial of armed forces personnel who die during time of war.

## SAVE, SHOP MURRAY'S

- 25 LBS. YOUR BRAND FLOUR ..... \$1.79
- 10 LBS. VERIBEST CORN MEAL ..... 70c
- SALAD DRESSING, 50c size ..... 39c
- FRESH COUNTRY EGGS, dozen ..... 64c
- CEREALS, your choice, 2 for ..... 25c
- SKINNER'S MACARONI 3 for ..... 25c
- FRESH PORK SAUSAGE, pound ..... 49c

—MANY OTHER BARGAINS—  
LIMITED STOCK. SCARCE ITEMS INCLUDE:

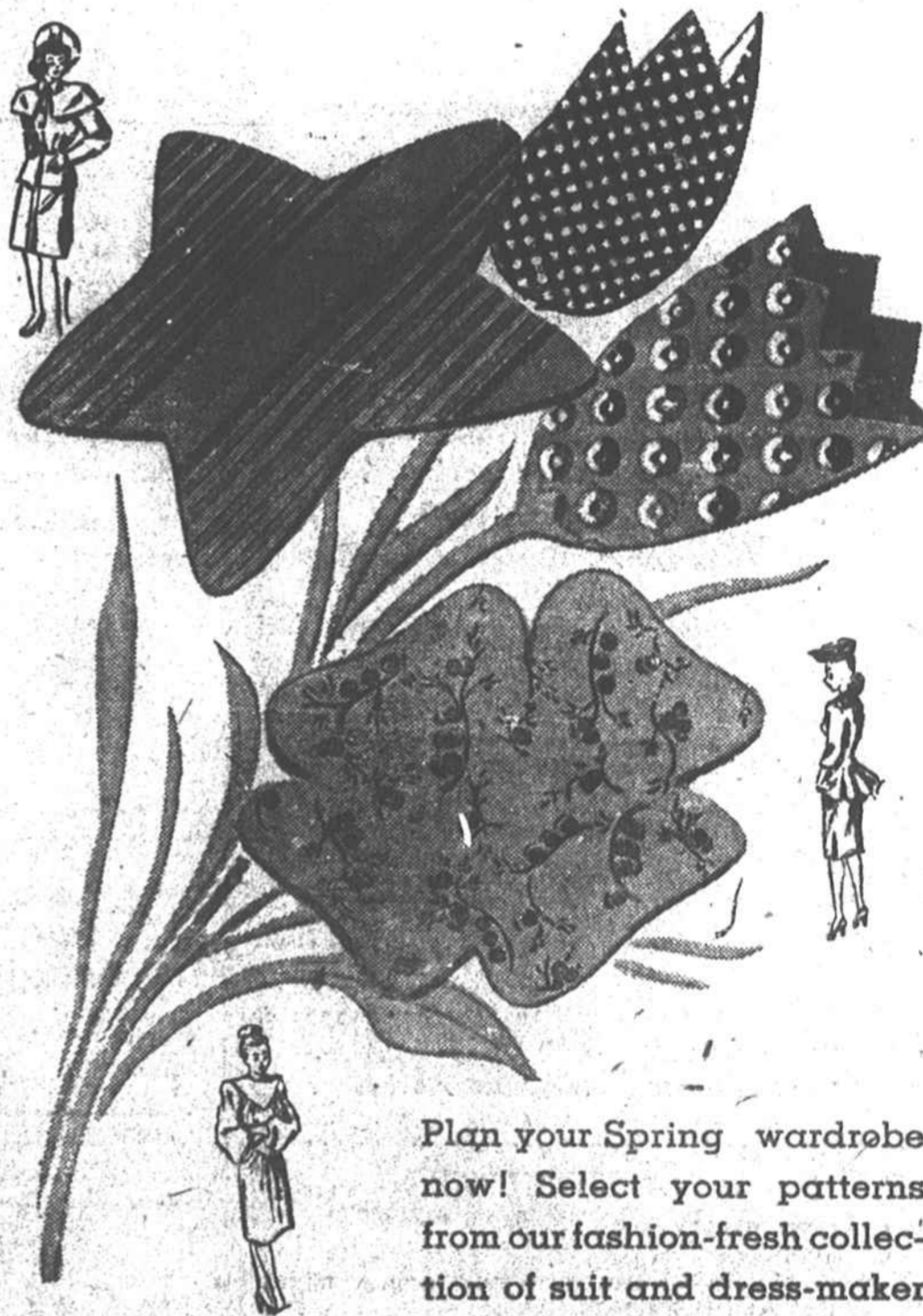
Spring Handle Mops, Rinso, Dress Kid Gloves, Rice, Boxed, Asst. Chocolates, Griss, Black Pepper, Duke's Mayonnaise, and Relish, Bananas, Sanka Coffee, Crushed Pineapple, White and Red Syrup.

## MURRAY'S GROCERY

(Off Cleveland Avenue)

The Herald - \$2.00 A Year

# SPRING SEWING



Plan your Spring wardrobe now! Select your patterns from our fashion-fresh collection of suit and dress-maker fabrics. Prints, stripes, solids and checks in bright Spring colors... available now at our traditionally low prices. Beautiful Spring patterns in dress material.

35c per yard up

Headquarters For Simplicity Patterns

# Belk's Department Store

Remember — You Always Save At BELK'S



## FOR WANT OF A NAIL

Nearly two hundred years ago Benjamin Franklin wrote the famous lines about how a kingdom was lost . . . because a battle was lost . . . because a rider was lost . . . because his horse was lost . . . because a shoe was lost . . . and all for want of a nail.

We keep thinking of those lines whenever we're asked what's holding up production of the new Chevrolet cars. You see, it requires more than 8,000 parts to build an automobile, and if a shortage of material prevents production of just one of these parts, then production of the entire car is halted.

For want of a nail? Yes, it's almost literally that. Of the 8,000 parts in a Chevrolet, about 2,500 of these are nuts and bolts alone! The production men at Chevrolet tell us that nuts and bolts are hard to obtain just now, and are shipped by special planes to assembly plants all over the country whenever a source for these vital parts is found.

At ten o'clock one morning it was learned that Fisher Body plants at Kansas City and St. Louis would be forced to shut down the following morning if a supply of window channels was not available by seven a.m. These parts were at a plant in Amesbury, Massachusetts, and none of the passenger airliners had doors big enough to admit the long channels.

Arrangements were finally made for a C-47 cargo plane to fly from Chicago to Boston to pick up the channels trucked there from Amesbury. The 9,000 pounds of channels were then flown to Kansas City and St. Louis, and Chevrolet bodies continued to move out of the plants.

Hoods have been flown from Flint to Kansas City; fenders from St. Louis to California. These daily air-cargo shipments are a part of the vast Chevrolet plan to move parts; the minute they are available, into plants where shortages exist—to move them there fast, so that those plants can keep operating.

Another ingenious step taken to help beat the materials shortages was at a Chevrolet foundry in Saginaw. Pig iron was low, a scheduled shipment had not arrived, and a shut-down seemed certain. Then someone suggested exploring the river bottom with an electromagnet near the docks where pig iron had been unloaded for many years. Seventy tons of iron were brought up, enough to keep the plant running until the late shipment arrived.

Chevrolet wants you to receive delivery of your new Chevrolet complete. The men who build your cars refuse to relax Chevrolet's high standards by allowing cars to come off the assembly line without bumpers or seats—and of course cars can't be built at all unless materials are available to produce vital parts. Chevrolet often has to hold up production entirely because some tiny part cannot be obtained.

Even so, you can see that Chevrolet is doing everything possible to speed delivery of the new Chevrolet for which you have waited so patiently.

If you have had to wait, it is because Chevrolet, too, has had to wait . . . all for want, perhaps, of a nail.

## CHEVROLET



VICTORY CHEVROLET COMPANY

Phone 40