

CHURCH NEWS

FIRST PRESBYTERIAN CHURCH
 P. D. Patrick, Minister
 9:45 a. m. Sunday school.
 Harry Page, Supt.
 11:00 a. m. Morning Worship.
 2:30 p. m. Sunday school at Friendship Chapel, Clifford Kirkus, Supt.
 3:00 p. m. Sunday school and service at Dixon, J. G. Darracott, Supt.
 7:30 p. m. School of Foreign Missions. Classes for all ages.
 Monday 7 p. m.—
 Boy Scouts, Troop I, Broadus Moss Scoutmaster; James Page, Asst. Scoutmaster.

ST. MATTHEW'S LUTHERAN CHURCH
 Rev. Wm. H. Stender, Pastor
 Saturday, Jan. 17—
 Junior Choir Practice 9:30 a. m.
 Catechetical Class 10:30 a. m.
 Sunday, Jan. 18—
 Sunday School, Mr. Jacob M. Coop

er, Supt. 9:45 a. m.
 Pastor's Study Class, Pastor Stender, 10:00 a. m.
 Church Service, with the sermon by the pastor 11:00 a. m.
 Junior Children of the Church 3:00 p. m.
 The Luther Leagues 6:30 p. m.
 Vespers, with the sermon by the pastor, 7:30 p. m.
 Monday, Jan. 19—
 Boy Scouts 7:00 p. m.
 Brotherhood Supper, 7:00 p. m.
 Tuesday, Jan. 20—
 Youth Fellowship 7:30 p. m.
 Wednesday, Jan. 21—
 Children of the Church 3:00 p. m.
 Brownie Scouts 4:00 p. m.
 Senior Choir 7:30 p. m.

FIRST BAPTIST CHURCH
 Lucian C. Pinnix, Pastor
 Sunday—
 10:00 a. m. Sunday School.
 E. C. McClain, Supt.
 11:00 a. m. Morning Worship.
 Sermon by the pastor.
 6:15 p. m. Baptist Training Union.
 Mrs. W. B. Logan, Director.
 7:30 p. m. Evening Worship.
 Sermon by the Pastor.
 Wednesday—
 7:30 p. m. Prayer meeting.
 8:15 p. m. Youth and Adult Choir rehearsals.
 Thursday—
 4:00 p. m. Choir rehearsal.
 Saturday—
 9:30 a. m. Jr. G. A.

BOYCE MEMORIAL ARP CHURCH
 William L. Pressly, Minister
 Church School 10 a. m.
 J. L. McGill, Supt.
 Morning Service 11 a. m.
 Vesper Service 5 p. m.
 Meetings Monday afternoon at 3:30
 Macie Stevenson circle will meet with Mrs. B. D. Ratterree, Mrs. W. S. Fulton will be the leader.
 Minnie Alexander circle will meet with Mrs. J. M. Garrison, with Mrs. P. D. Fulton as leader.
 Meetings Monday at 8 p. m.
 Frances Hamilton circle will meet at the home of Mrs. J. E. Gamble, with Mrs. Jimmy Harris assisting the hostess, Mrs. Franklin Ware is leader.
 Mary Kennedy circle will meet with Mrs. Pride Ratterree, Mrs. Ben Goforth is the leader.

BETHLEHEM BAPTIST CHURCH
 T. W. Fogleman, Pastor
 Sunday school each Sunday 10 a. m.
 H. K. Dixon, Supt.
 Worship, second and fourth Sundays at 11 a. m., and first and second Sundays 7 p. m.

NEW MISSIONARY CHURCH
 Second street at Cora Hill
 Spurgeon Scruggs, Pastor
 Sunday—
 9:45 a. m. Sunday school.
 Harvey Morrow, Supt.
 11:00 A. M. Preaching service.
 7:00 p. m. Preaching service.
 Thursday—
 7:00 p. m. Prayer service.
 Saturday—
 7:00 p. m. Prayer service

SECOND WESLEYAN METHODIST CHURCH
 Jessie Henson, Pastor
 9:45 a. m. Sunday school.
 11:00 a. m. Morning worship.
 7:00 p. m. Evening worship.
 Wednesday: 7:00 p. m. Prayer service.

FIRST CHURCH OF THE NAZARENE
 Harry E. Crump, Pastor
 Sunday school 9:45 a. m.
 Supt., J. D. Summitt.
 Morning worship 11:00 a. m.
 Young Peoples Service 6:15 p. m.
 President, Wesley Moss.
 Wednesday night prayer service 7:00 p. m.
 Evangelistic service each Sunday evening at 7:00 p. m.

TEMPLE BAPTIST CHURCH
 Corner of Fulton and Cansler Sts.
 W. F. Monroe, Pastor
 Sunday—
 10:00 a. m. Sunday school.
 11:00 a. m. Preaching service.
 6:00 p. m. Training Union.
 7:00 p. m. Evening worship.

MOUNTAIN VIEW BAPTIST CHURCH
 Rev. Floyd Hoiler, Pastor
 A special watch service will be held at Mountain View Baptist church Saturday night at 7:30. Come and see who the speakers will be! The public is invited to attend.
OAK GROVE BAPTIST CHURCH
 T. W. Fogleman, Pastor
 Sunday school 10 a. m.
 Culp Ford, Supt.
 Worship first and third Sundays 11:00 a. m.
 Second and fourth Sundays 7:00 p. m.

In schools established by the Navy in Trust Islands of the Pacific, classes in the practical use of English are held for the native children.

Rev. Shumake To Be At Nazarene Church

Rev. Harry E. Crump, pastor of the First Church of the Nazarene, announced today that Rev. C. E. Shumake, district superintendent of the Carolina district of Nazarene Churches will be at the First Church here on Sunday morning, Jan. 18, in the interest of Home Missions.

Naval Air Transport Service officials estimate that NATS transports Navy men for two-thirds of the cost the Navy would have to pay for commercial transportation for the same men.



\$12.50

Exceptional skill in design gives Porto-Peds their smart styling. Their yielding air cushion and flexible Arch Lift give you true comfort.

MYERS'

DEPT. STORE

Rress Shop—Second Floor

B. & B. FOOD STORES Inc.

HOME-OWNED AND OPERATED

Horace Hord, Manager

10c

- 1 qt. Vita Kosher Style Pickles
- 1 pt. 8-oz. Jar Dill Flavored Snax
- 1 qt. Morgan Pure Apple Juice
- No. 2 Can White House Pure Apple Juice
- No. 2 Can Cut Beets
- No. 1 Can Sliced Peaches
- 1 lb. Can Gibbs Beans & Tomato Sauce
- No. 2 Can Gibbs Spinach
- No. 2 Can Carolina Beauty Chopped Kraut
- No. 2 Can Lord Fairfax Turnip Greens
- 1 lb. Jar Potato Salad
- All Phillip's Soups

10c

1st. QUALITY MEATS

- Lean Ground Beef 45c
- TENDER STEAKS—
- T-Bone Steak 74c
- Sirloin Steak 74c
- Minute Steak 79c
- Round Steak 79c

Dressed and Drawn Hens 53c

JUICY BEEF ROASTS

- Boneless Rolled Shoulder 69c
- Rump Roast Boneless 69c
- Chuck Roast 53c
- FRESH PORK—
- Best Cuts Pork Chops 65c
- Loin End Roast 63c

FRESH FISH

- Pan Trout 32c
- Mullet 29c
- Dressed Whiting 23c

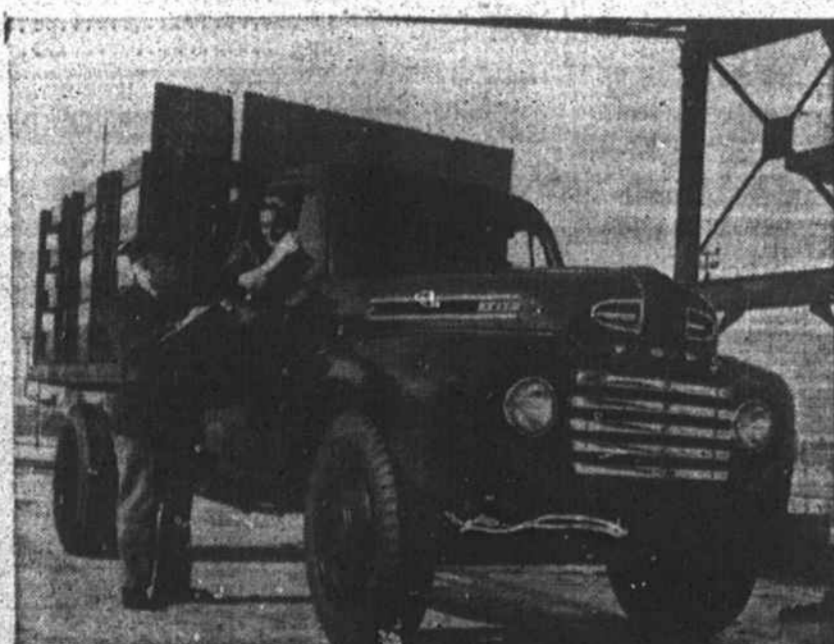
FRESH OYSTERS

NEW, NEW, BRAND-NEW!

Ford Bonus Built Trucks

—On Display—

FRIDAY and SATURDAY



The new 1948 series F-5 Ford 1 1/2-ton, 134-inch wheelbase truck with a nine-foot stake body was shown to the public today by the Ford Motor Company. The new truck line represents the first postwar products of Ford and is offered in a wider range of models and capacities than ever before, from 1/2-ton pick-up and panel models through 2 1/2- and 3-ton series F-7 and F-8, the largest trucks the company has ever built.

Holding fast to all that has made the Ford Truck the Endurance Champion among the industry's sales leaders, Ford now brings you the full benefit of five years in intensive engineering research! These 1948 Bonus Built Trucks are all new, from grille to tail lamp. But they are serviced-proved down to the smallest forging. You'll vote them first place in value.

In what way? In every way! In power, in performance, in safety, in economy, in com-

fort, in rugged endurance—yes, even in the world-famed, traditional Ford reliability—they're better trucks.

THEY'RE BUILT STRONGER TO LAST LONGER—Bonus Built, with the extra stamina that has always made Ford Trucks a better buy for any business. And among the many separate variants of chassis, engine, wheelbase and body available, there's the just-right Ford Bonus Built Truck for your business!



The new 1948 series F-1 Ford 1/2-ton truck has a 114-inch wheelbase with 6 1/2-foot pick-up body. The new trucks offered in 1/2-ton, 3/4-ton, 1-ton, 1 1/2-ton, 2-ton, 2 1/2-ton and 3-ton capacities provide a wider range of models and capacities than ever before, including the F-7 and F-8 series—the largest trucks Ford has ever built.

New Models For Every Need!

PLONK MOTOR COMPANY

Sales  Service

Phone 138

Battleground Avenue

*Webster's Dictionary definition of word "Bonus"—"Something given in addition to what is usual or strictly due."