

Chevrolet's 'Balanced Design' Adds Beauty and Comfort



Progressive streamlining of the 1949 Chevrolet is in emphasis in this view of the Styleline De Luxe four-door sedan against a new Martin 202 passenger air-liner. Notable in the roomier, lower cars is a balance in design that adds greater comfort and driving ease as well as smart appearance.

By Way Of Mention
Lois Beattie

Mrs. H. B. Jones spent the week end with her sister, Mrs. R. O. Craig in Gastonia.

Mrs. Gordon Beatty had as her guest recently her daughter, Mrs. Ray Clemmer of Dallas.

Mr. Elbert Payne has returned home from the hospital.

Mr. and Mrs. Coleman Stroupe and daughter, Glenda, spent Sunday in Dallas.

Mr. and Mrs. Ernest Payne had as their guests Sunday Mr. and Mrs. O. V. Fuhrer and children of Belmont.

Mrs. Novella Phillips has returned home from the hospital.

Mrs. Hobart Metcalf spent Sunday with her mother, Mrs. W. A. Dettmar of Gastonia.

Mr. and Mrs. Frank Blanton, Mr. and Mrs. Loranza Blanton, Mr. L. D. Blanton all of this city and Miss Ruby Freeman of Bostic spent Sunday with Mrs. Frank Blanton's parents, Mr. and Mrs. M. M. Collins of Winnsboro.

Mrs. H. B. Jones had as her recent guests Mr. and Mrs. A. L. Alexander of Charlotte.

Mr. and Mrs. Frank E. Rice and Mrs. J. I. Hope spent Sunday with Mr. and Mrs. Gus Rector of Gastonia.

Mrs. Milland Metcalf has returned home from the hospital.

Special interest will center on potato production in 1949. The support price has been reduced to only 60 percent of parity, and observers will be watching to see what effect this step will have on the number of acres grown.

RELIEF AT LAST For Your COUGH

Creomulsion relieves promptly because it goes right to the seat of the trouble to help loosen and expel germ laden phlegm and aid nature to soothe and heal raw, tender, inflamed bronchial mucous membranes. Tell your druggist to sell you a bottle of Creomulsion with the understanding you must like the way it quickly allays the cough or you are to have your money back.

CREOMULSION for Coughs, Chest Colds, Bronchitis

1949 Chevrolet Goes On Display Here Saturday

A product of three years' development work and more than a million miles of engineering research, the 1949 Chevrolet goes on display at Victory Chevrolet Company show-rooms here Saturday.

The latest model has been completely restyled. It is lower, wider and more distinctive than any previous series. Not only does the design introduce superior beauty to the lowest-priced ranks, but numerous body and chassis improvements promise to add Chevrolet's reputation for comfort, safety and convenience.

Two series of cars, the Fleetline and Styleline, are included with De Luxe treatment an option in most body types. De Luxe cars lay increased emphasis on the styling of fabrics, trim and appointments.

In both styling and performance, the 1949 series continues the "big car" aspects that have always been traditional with Chevrolet. The design is fresh and substantial-looking without approaching the extreme. Greater comfort is reported demonstrably by "ruler and by ride." The rugged six-cylinder, valve-in-head engine remains fundamentally the same, but refinements will increase appreciably the car's handling ease and owner satisfaction.

The first impression of the new cars is one of smart styling, structural strength and generous dimensions. The entire passenger compartment has been moved forward, lengthened, broadened and lowered, affording a pleasing balance of proportions.

From the passenger's standpoint perhaps the chief improvement in bodies is the immense increase in glass area.

Another important factor in better roadability is the adoption at the front and rear of direct double-acting shock absorbers, a type that proved itself in wartime service. Fronture the coil spring "Knee-Action"

suspension, which continues to feature Chevrolet pioneered 15 years ago, has been made sturdier.

A new steering geometry will be found significant by drivers. The master arm is now located in the center of the chassis front end, equalizing the effort of right and left turns. The gearshift is new. Recent developments in shift linkage caused engineers to substitute the manual shift for the former vacuum-assisted mechanism.

The atmosphere of luxury in the 1949 Chevrolet interiors has been heightened by simplified seat construction, new fabrics and tasteful moldings, panelling and trim.

The world output of major food products in 1948 was about 6 percent above 1947, and there is indication of further expansion of food crop acreages in 1949, says the Office of Foreign Agricultural Relations of the U. S. Department of Agriculture.

Weed control through the use of 2, 4-D is coming into increasing use in wheat, corn, and other grain fields.

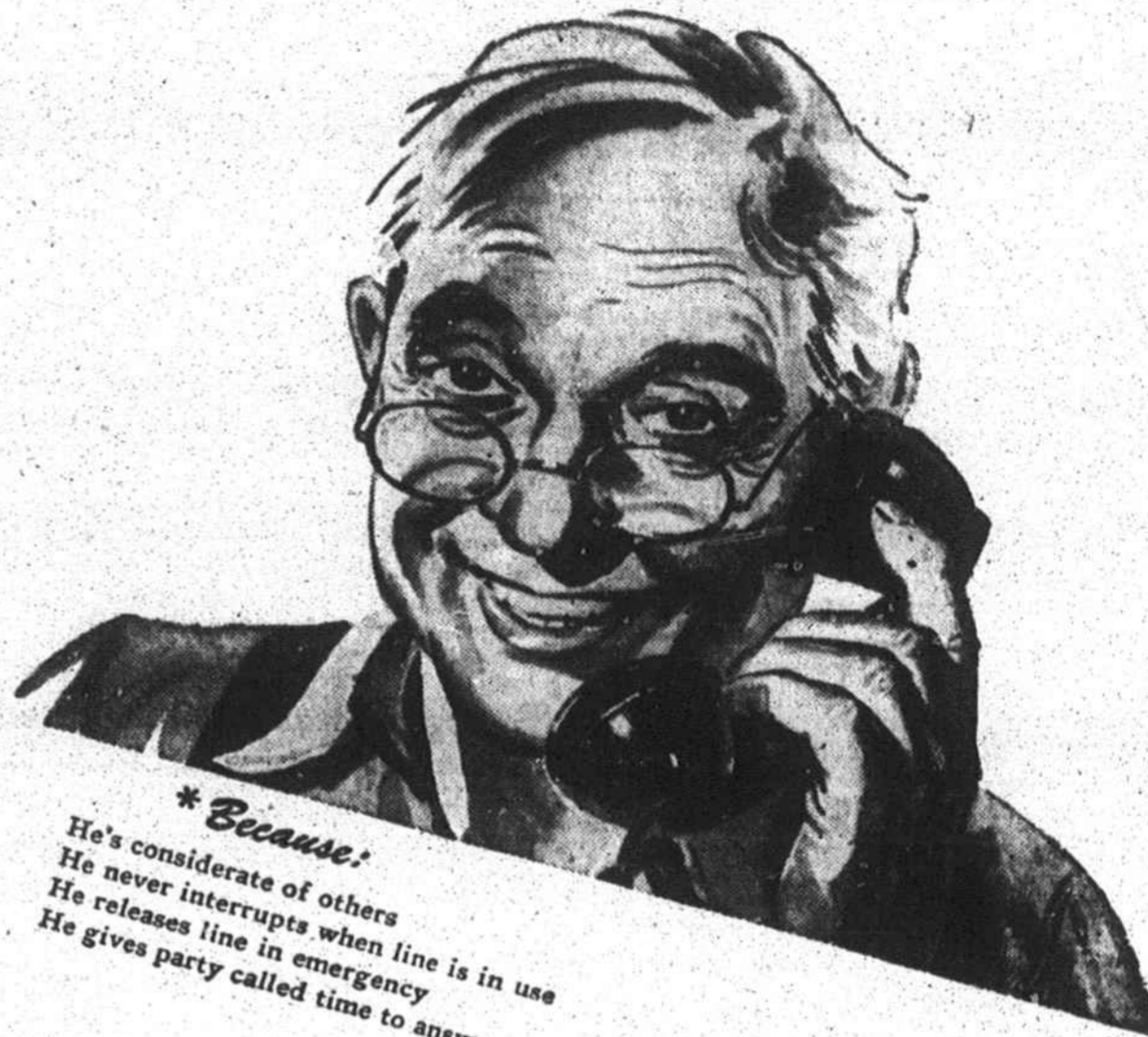
Retail milk prices received by farmers in the State declined almost a cent per quart from mid-November to mid-December, while wholesale prices held steady.

Production of farm machinery last year exceeded the previous record, established in 1947, by about 15 percent.

666 GIVES FAST RELIEF when COLD MISERIES STRIKE
LIQUID OR TABLETS

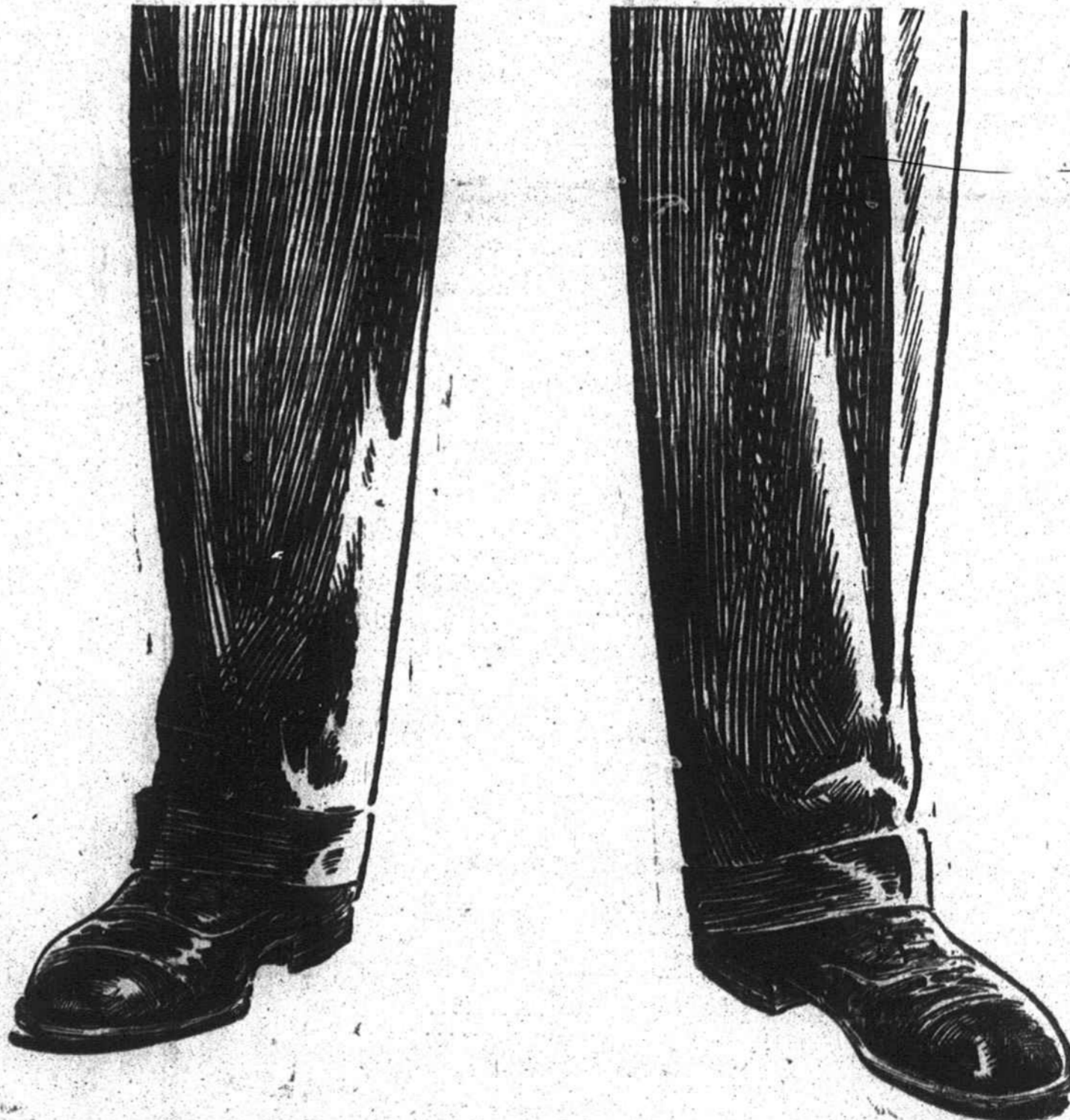
Robert H. Cooke
Certified Public Accountant
Tax Consultant
Telephone 1006
Finance Building
SHELBY, N. C.

Harry is a popular PARTY LINER*



** Because:*
He's considerate of others
He never interrupts when line is in use
He releases line in emergency
He gives party called time to answer

SOUTHERN BELL TELEPHONE AND TELEGRAPH COMPANY
Incorporated



We stand on our own two feet

The Southern Railway is a self-supporting, privately-owned-and-operated mass transportation system that pays all its costs of doing business out of its own pocket.

We operate on our own steel highway, built and maintained with our own dollars. Our taxes, like your taxes, go to help support schools, hospitals, police and fire departments... and to build and maintain highways, airports and waterways.

We're glad to get along without a penny of subsidy from the taxes that come out of your pocket. Old-fashioned? Maybe. But it's a sound American tradition that we like, and want to continue... because we're convinced that it's best for America that its industries, as well as its individuals, stand on their own two feet.

Ernest B. Norris
President

SOUTHERN RAILWAY SYSTEM



Program for a successful New Year with poultry—

- 1 Above everything else
GET GOOD CHICKS
- 2 Arrange to house chicks in a clean, comfortable place.
- 3 Use a feed that will give maximum growth.

CLEVELAND CHICK STARTER

or

CLEVELAND BROILER RATION

WILL FILL THE 3rd REQUIREMENT

EAGLE ROLLER MILL CO.

Shelby, North Carolina