

Primarily because of its tobacco industry, North Carolina is one of the leading states in the payment of taxes to the Federal government.

Estimates on the 1948 corn crop now place the State average at 31 bushels per acre. Total production was about 69 million bushels.

ABSOLUTELY GUARANTEED
WATCH REPAIRING
AT LOWER PRICES

DELLINGER'S JEWEL SHOP
 Kings Mountain, N. C.

4-Day Watch Repair Service

HARRIS FUNERAL HOME
 —Ambulance Service—
 Phone 118 Kings Mountain, N. C.

YOUR ONE-STOP MARKET

For Highest Quality Foods
BLALOCK GROCERY
 Serving Kings Mountain Over 13 Years
 Phone 58

SLICES OF LIFE

SCOTT BROWN

"Her mother ought to give her **HOLSUM** Vitamin Enriched Bread . . . She's been trying to blow the candles out for an hour!"



BEST FOR SANDWICHES

Holsum BREAD

Subscribe To The Herald—\$2 Per Year

SPORT SHOTS

BY CHARLES CARPENTER

Responsibility of the Team Captain

The team captain should:

1. Greet the opposing captain with genuine friendliness.
2. Demonstrate very plainly a respect and friendliness toward the officials — treat them as guests. If the captain has any questions on decisions he should ask them during a time out in a quiet and respectful manner and only for the purpose of clarifying a ruling so that it may be conveyed to teammates and coach.
3. Not permit teammates to enter into arguments with opponents, officials, or spectators.
4. Always be ready with a word of praise for fine play, whether it be by an opponent or teammate.
5. Never indicate or let teammates indicate by any actions that he or they may feel "robbed" by an official.
6. Never depart from the word or spirit of the rules and he should discourage teammates from breaking rules.
7. Play to the limit of his ability and energy and motivate teammates to do likewise. Spectators are less critical of good, clean play no matter what the outcome. Strive mightily to win any contest.

Responsibility of the Principal

The principal at the administrative head of the school must establish the principles of good sportsmanship in the minds of the entire school family and all those who associate with any of the school's activities. He must realize that the type or kind of sportsmanship that is practiced or displayed reflects his leadership in the administration of his school because the activity is being played by representatives of his institution.

The following are some basic ideas that the principal should consider when he evolves procedures for inculcating sportsmanship.

Specifically the principal should:

1. Practice good sportsmanship himself at all times.
2. Promote the practice of sportsmanship at all times by the official school family and the patrons.
3. Keep the activities under the official control of the school authorities at all times.
4. Establish a definite policy and procedure relative to eligibility and abide by that policy. (Be sure that this policy is thoroughly understood by all.)
5. Attend the school activities and display a vital interest in them.
6. Be sure he is in accord with the method used in selecting and approving the officials selected.
7. Promote good relationships with all civic organizations and acquaint them with their responsibilities relative to good sportsmanship.
8. Be sure that all parents thoroughly understand what the school expects in its players.
9. Establish good rapport with the radio and press relative to their obligation of promoting good sportsmanship.
10. Be sure that all players are thoroughly cognizant of his desires relative to their sportsmanship.
11. Establish a pride of mutual respect for their opponent guests by providing for the reception of the guests (visiting team), by extending the common courtesies that are usu-

ally extended to guests, namely, meeting and greeting, conducting them to their dressing room, and satisfying reasonable needs.

Specifically the principal should not:

1. Allow any activity to spersed or interfere with the objectives of education.
2. Allow booging of decisions or penalties.
3. Allow booging at opponent's yells.

4. Allow interference with the normal procedures of the other team.
5. Allow counting of the score en masse.
6. Allow throwing of materials.

7. Allow anyone but those authorized in the playing area.
- Next week — "The Responsibility of the Faculty Manager and Athletic Director."

—Quality Cleaning—
—THAT'S THE BRAND YOU GET AT—
WEAVER'S CLEANING
 Phone 382-W

CITY TAX LISTING
Began Sat. Jan. 1st

All persons are hereby notified that they must list their property, both personal and real, and all male persons between the ages of 21 and 50 must list their polls during the month of January as required by law.

See The Tax Lister
At City Hall

through January 31st.

CLARENCE E. CARPENTER
 Tax Lister

City of Kings Mountain

Value No. 1
in its weight class!

For proof, read the "Value Comparison" at the right.

More power is yours for brilliant performance . . . with more payload capacity, too! Superior ease of handling is yours with advanced steering, and front-end design.

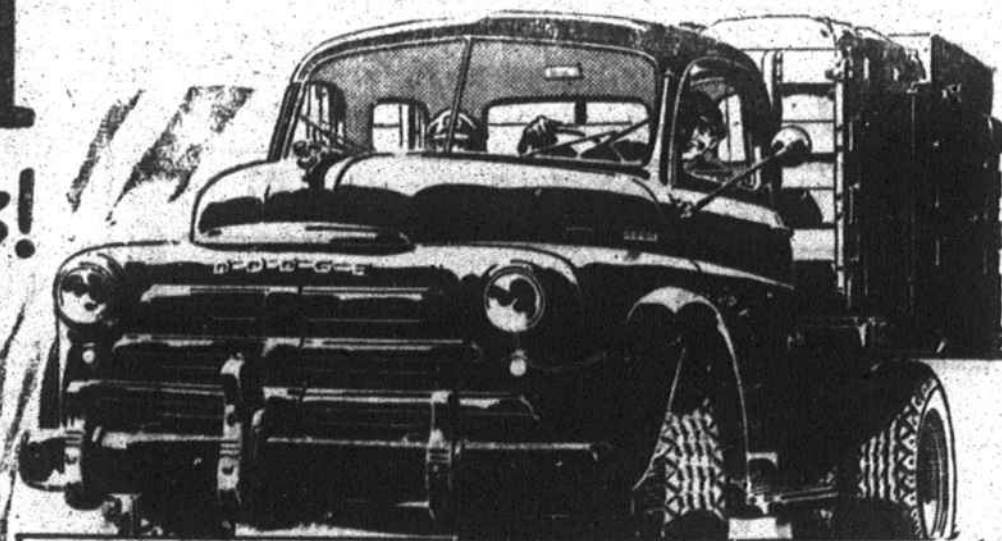
More load protection and driver comfort are yours with longer, bigger-capacity springs . . . and generous-sized cabs.

And more safety for loads, and for your truck investment, are yours with the safest vision ever designed into a truck cab . . . and with the finest of all brakes.

These are just a few of the many advanced features that are yours with Dodge "Job-Rated" trucks. There are many more!

So come in . . . and let us give you all the reasons why this truck represents Value No. 1 for hauling jobs in this weight class!

For the good of your business
 switch to **DODGE**
 "Job-Rated" **TRUCKS**



Read this Value Comparison
 (Dodge Model F-152; and Comparable 1½-Ton Competitive Models)

Features and Advantages	DODGE "Job-Rated" TRUCK	TRUCK "A"	TRUCK "B"	TRUCK "C"
Maximum Gross Vehicle Weight	14,500 lbs.	12,500 lbs.	14,000 lbs.	13,500 lbs.
Maximum Horsepower	109	93	100	93
Turning Diameter* — Left	50½ ft.	61½ ft.	60½ ft.	54½ ft.
— Right	50½ ft.	61½ ft.	54½ ft.	54½ ft.
Wide-Tread Front Axles	62 in.	56 in.	60.03 in.	58½ in.
Total Spring Length (front & rear)†	194 in.	171½ in.	182 in.	176 in.
Cab Seat Width‡	57½ in.	53½ in.	53 in.	47½ in.
Windshield Glass Area*	901 sq. in.	713 sq. in.	838 sq. in.	545 sq. in.

*To outside of tire (cab clearance). Computed from data based on lists or computations obtained from usually reliable sources. †All four springs. ‡Measured from production models. * Computed from width and depth measurements; no allowance for contours.

REYNOLDS MOTORS

507 E. KING ST.

TELEPHONE 331-J