

Central "Ball Hawks" Nip Forest City 7-2

Shytle Intercepts Pass For Score Early In Game

Wingback Billy (Poochie) Shytle intercepted a Forest City pass on the Golden Tornadoes 29-yard line early in the game and scored the touchdown as Kings Mountain high school edged the Rutherford County eleven in Forest City last Friday night by a score of 7 to 2.

It was the first Western (Class AA) Conference victory of the season for Kings Mountain and gives the Mountaineers a loop record of one win, no losses and one tie. Rutherfordford - Spindale high school, next loop foe, is to play here Friday night.

Guard Robert Davis placed kicked the point after Shytle's score to put the Mountaineers into an early 7-0 lead.

Kings Mountain had to put up a couple of stiff goal line stands to gain the hard-earned victory, however. The Mountaineers stomped Forest City drives on their own 12-yard line and 13-yard line in the last half and intercepted a lateral pass to stop another drive.

A blocked punt after the first goal line stand by Kings Mountain resulted in a safety for For-

STATISTICS

RUSHING					
Player	Tries	G	L	Net Av.	
Shytle	7	53	8	45	6.4
Griffin	3	12	0	12	4.0
Bumgardner	19	41	5	36	3.6
Kimmell	9	13	12	1	1.1

PASSING				
Player	Att.	Com.	Int.	Yds.
Kimmell	4	0	0	0
Nanney	7	2	1	14
Hines	2	0	1	0

FROM TO YDS. GAINED				
Nanney, FC	Newton	12		
Nanney, FC	Hines	2		

to date is three wins, one loss and one tie.

A large contingent of Kings Mountain fans attended the game and many others heard the game here at their homes over Station WBBO, Forest City.

PLAY-BY-PLAY

Guard Robert Davis kicked off to the Forest City 19-yard line and Quarterback B. Moore returned 19 yards to the 38 and on the first scrimmage play of the game Fullback Arnold Nanney fumbled after picking up 2 yards and Tackle Gerald Valentine recovered for Kings Mountain.

Wingback Billy Shytle crashed 22 yards for a first down to the FC 18 but the home team stiffened, holding Tailback Jim Kimmell to 2 yards on the next play. Kings Mountain drew a five yard penalty for backfield in motion on the next play, Fullback Don Bumgardner fumbled and recovered for a five yard loss on the next and Shytle ran for 3 on fourth down and Forest City took over on their 23-yard line.

Tailback A. B. Blanton hit off tackle for 3 and Wingback Hines was held to no gain on a reverse. Nanney's pass into the flat was intercepted by Shytle on the 29 and runback for a touchdown. R. Davis scored the point after from placement and the Mountaineers led 7 to 0.

Blanton returned R. Davis' kickoff 27 yards from his 13-yard line and picked up 6 off tackle on the following play. Hines was stopped for no gain on a reverse and Nanney's pass to End B. Newton fell incomplete. Hines punted to Shytle on the KM 10 and Shytle ran the ball back 24 yards.

Bumgardner picked up a yard in two line smashes and Kimmell quick-kicked to the FC 18, Blanton returning 10 yards.

Blanton picked up 8 yards off tackle and Nanney crashed the line for 7 and a first down. Blanton took a pitch-out from Moore for 4 yards and a handoff from Moore for 2 more. Hines passed to Newton for 19 yards but Forest City drew a five-yard penalty for backfield in motion. Blanton tried off tackle but met Tackle Gerald Valentine head-on after picking up a yard. Hines punted to Kimmell on the KM 19 and he ran the ball to the 29.

Bumgardner picked up six yards in two tries. Kimmell's long pass to End Don Flowers fell incomplete. Kimmell punted short to the FC 40 but the Rutherford lads drew a five-yard penalty for offside. Kimmell punted to the FC 28, returned 10 yards by Hines.

Blanton hit tackle for a yard, Hines skirted the flank for another and Blanton picked up three in the line. Hines' punt rolled dead on the KM 20.

Kimmell lost 9 yards and Shytle picked up 14. Kimmell's pass into the flat went through Blocking Back Jim Cobb's hands on the 25 and Kimmell punted to the FC 47, a KM offside penalty being refused by the Tornadoes.

Nanney picked up 9 yards through the line and Moore picked up 4 on a sneak for a first down. Nanney handed off to Hines and Valentine stopped the play for a loss of 7 yards. Nanney passed to Newton for 12 yards but fumbled on the next play, Hines recovering for a 10 yard loss. Hines kicked out on the KM 5.

Kimmell was stopped cold at tackle and quick-kicked to the KM 49.

Hines' pass to Goode fell incomplete and Nanney hit the line for 9 yards as the half ended.

THE YARDSTICK

	KM	FC
Score	7	2
Total first downs	3	7
First downs running	3	7
First downs penalty	0	0
First downs passing	0	0
Yards gained rushing	119	142
Yards lost rushing	25	18
Net yards rushing	94	124
Passes attempted	4	9
Passes completed	0	2
Yards gained passing	0	14
Net scrimmage gain	94	138
Passes intercepted by	2	0
Yards run-back	29	0
Lateral Passes Int. by	1	0
Yards run-back	60	0
No. of scrimmage plays (not counting punts and penalties)	33	46
No. of punts	9	4
Ave. distance punts	31	39
Yards punts returned	30	54
No. of kick-offs	2	1
Kick-off average	44	35
Ball lost on fumbles	0	1
No. of penalties	5	3
Yards lost penalty	45	15

TOTAL YARDS GAINED

IN GAME (add yards gained run - back punts kick-offs and intercepted passes to net rushing, passing, penalty gains)	
229	283

SECOND HALF

Newton kicked to the KM 25 and Shytle was stopped after a yard gain. Kimmell picked up 2 yards and passed to Flowers, incomplete. Shytle picked up 2 and Kimmell punted to Nanney on the FC 39, Nanney returning two yards to start Forest City on their longest drive of the game.

Nanney hit the line for a short 10 yards and picked up a first and ten on the next play with 2 yards. Nanney took a handoff from Moore for 2 and a pass, Nanney to Hines, was broken up by Shytle. Goode handed off to Nanney for 4 and on fourth down, Goode ran for 11 yards to keep the drive rolling. Runs by Blanton, for 5, and Nanney, for 6, notched another first and ten on the KM 19. Goode was stopped for no gain, Nanney was held to a yard and a pass, Nanney to Hines, was broken up. Nanney hit the line for 6 yards, three short of a first down, and Kings Mountain took over on their 12-yard line.

Kimmell hit tackle for 2 yards, Bumgardner picked up 3 and cracked center for 14 and a first down. Kimmell's pass to Shytle was good for 9 yards but Kings Mountain drew a 15-yard penalty for clipping. Bumgardner picked up 9 and Kimmell one. Kimmell's quick-kick was blocked but Kimmell recovered in the end zone for a safety. Score - KM 7, FC 2.

Kimmell put the ball in play with a free punt from the KM 20, Hines returning the ball from FC 40 25 yards to the KM 35. Moore faked to Nanney and handed off to Newton on an end-around for 3, Goode pitched out to Nanney for 5 and Nanney hit the line for 2 and a first down. Blanton hit the flank for 5 and Goode hit the line for 3 and picked up 3 on a quarterback - sneak for a first down on the KM 15. Goode slipped over tackle for 3 but Forest City drew a five yard penalty for backfield in motion. Nanney passed to Hines for 2, Goode handed off to Blanton for 4, Nanney picked up a yard on a spinner and passed incomplete to Hines on fourth down, KM taking over on the KM 13.

Bumgardner picked up 2 through the line, Kimmell lost 3 and passed incomplete to Shytle. Kimmell punted to the KM 43, returned 7 yards by Forest City.

Hines pitched out to Nanney but Nanney's attempted lateral to Blanton was intercepted by Center Bob Hultender on the KM

25 and Hultender raced 75 yards for a touchdown that was cancelled by a Kings Mountain clipping penalty on the FC 15.

Kings Mountain drew another 5-yard penalty for delay of the game. Shytle added a yard, Kimmell 5 and Shytle lost 8. Kimmell punted out of bounds on the FC 16.

Nanney picked up 2 yards but FC drew five yards for backfield in motion. Hines lost a yard. Hines' pass to Moore was intercepted on the 21 by Shytle in a diving catch.

Fullback Walter Griffin hit the middle for 7 yards and Shytle made it first and ten with 11 on a reverse. Griffin was stopped in the line for a yard gain. Kimmell was stopped for a yard gain over tackle. Griffin went over the goal from the one-yard line but KM drew a 5-yard penalty for offside. Griffin cracked the line for 4 yards as the game ended.

The Lineups:

Pos. Kings Mtn.	For. City
LE—McGinnis	Gurley
LT—Mauney	Lowrance
LG—McMakin	Flack
C—Hullender	McBrayer
RG—R. Davis	Rollins
RT—Valentine	Crawley
RE—Flowers	Newton
QB—Cobb	Moore
RH—Shytle	Hines
LH—Kimmell	Blanton
FB—Bumgardner	Nanney

Scoring summary: touch-downs—Shytle (29 yard runback of intercepted pass in first quarter). Point after touch-down—R. Davis (placement). Safety—Kimmell (recovered blocked kick in KM end zone in third quarter).
Substitutions: Kings Mtn.—ends: Tate, Kiser, Jones, R. Go-ford; tackles: Crouch, Fisher; guards: Welch; centers: K. Davis; backs: McCarter, Griffin. Forest City—ends: G. Harrill, Y. Harrill; tackles: Collins; guards: White; backs: Goode.
Officials: Referee O. C. Connor,

Dr. James S. Bailey
OPTOMETRIST

Examination, Diagnosis, Glasses Fitted

Office open each Friday 10 A. M. to 5 P. M.

214 Mountain St. Next Door To Imperial Theatre

IT MEANS SO MUCH TO KEEP IN TOUCH



"Grandma? Mommy says come on over... sumpin' good's cookin'!"

The nearness of loved ones... the "togetherness" of the family... how much they depend on your telephone! Because it makes it so easy to keep in touch, you might easily forget just how much the telephone means to your enjoyment, convenience and peace of mind. And the price is still low. Rates for today's expanded

and improved service have gone up far less than most other things you buy. Yes, telephone service stands out as one of today's biggest bargains.

Southern Bell Telephone and Telegraph Company.

"So glad you called, darling. I'll be right over!"

so big in service... so little in cost



CARLISLE STUDIO

● Portraiture ● Commercial ● Weddings
Morrison Bldg ● Phone 646 ● Kings Mountain, N. C.

EYES EXAMINED DR. D. M. MORRISON OPTOMETRIST

IN KINGS MOUNTAIN
On Each Tuesday and Friday Afternoons
Hours 1 to 5 P. M.
MORRISON BUILDING
Telephone 316-J
EVENINGS BY APPOINTMENT

IN SHELBY
Monday, Wednesday and SATURDAY
8 A. M. to 5 P. M.
Tuesday and Friday
8 A. M. to 12 Noon
Royster Building
Dial 5981

A TRIBUTE TO Kings Mountain Policemen

The uniformed man who walks his beat, every ready to combat lurking danger, is an officer of the city, working for you. All through the stillness of the night... when homes are dark and stealth is on the prowl... your watchful Policeman is going his rounds. Smiling, rosy-cheeked, a mountain of security clad in blue, he shepherds the little children across the street. He is their friend, their protector, their laughing pal, on occasion... and who of us would have it any other way! So let's be considerate and really warm-hearted toward our fine Policemen. The Cop, please remember, is one of our most dependable citizens.

Holsum BAKING CO.

GASTONIA, N. C.

Children Thrive on Sunrise Milk

- Sunrise Milk is PASTEURIZED for extra safety
- Sunrise Milk is HOMOGENIZED for consistency
- Sunrise Milk is packed in PURE-PAK cartons for extra convenience
- Sunrise Milk comes from your farmer neighbor
- Sunrise Milk is FRESH Everyday

Ask for **SUNRISE MILK**

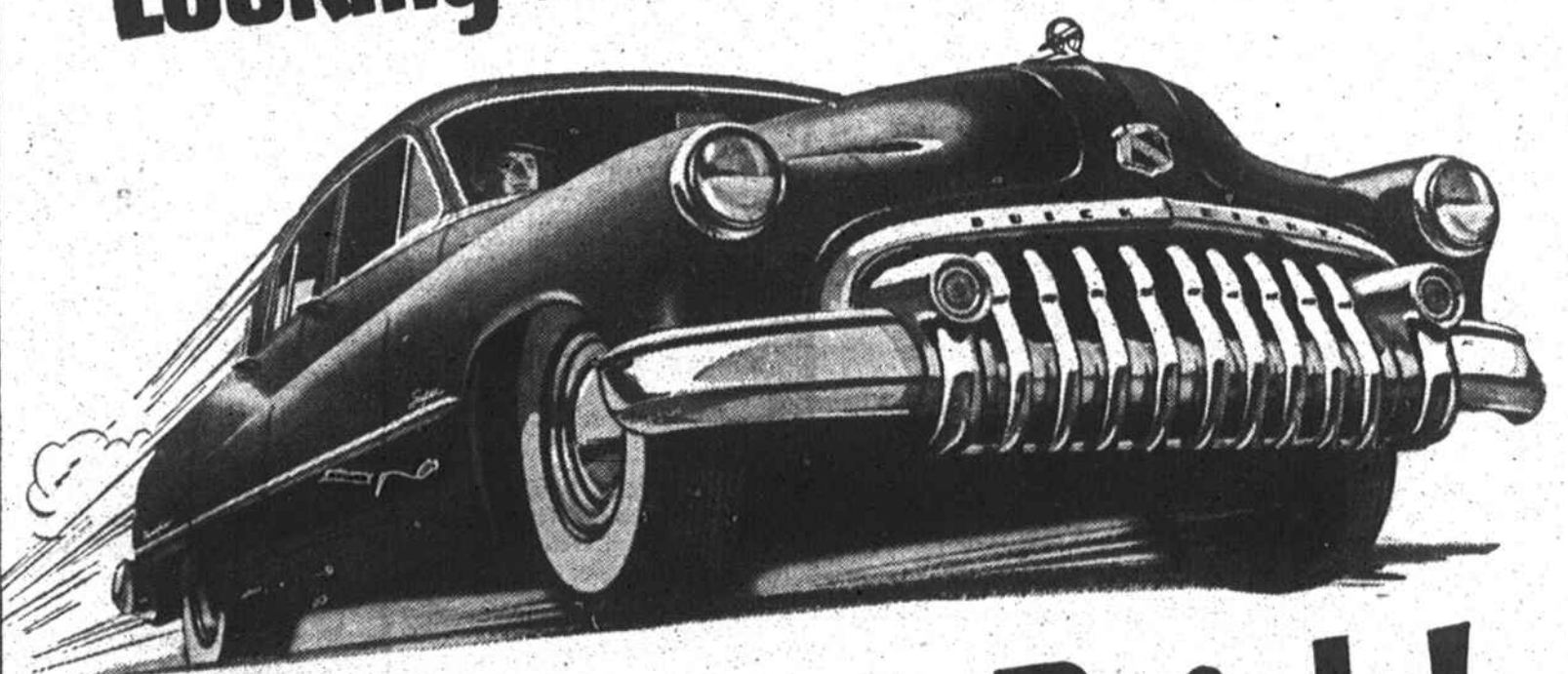
You'll also like FIESTA Ice Cream—Buy it at your Dealers

Sunrise Dairy

Phone 6354 ● Gastonia, N. C.



Looking for POWER?



Better Buy Buick!

THAT bold bonnet that stretches out before your eyes on a 1950 Buick isn't there just for show.

Lift it up, and you'll find that the space beneath is abundantly occupied, by one of the biggest hoodfuls of power you'll find in any motorcar.

What you're looking at is Buick's modern version of the high-compression valve-in-head engine, which gains extra wallop from the fact that it uses the exclusive Fireball combustion principle.

We could list a lot of mechanical reasons why fuel gives up extra power in a Fireball engine—how it's wrapped in a swirling, ball-shaped charge—how it burns with a smooth, clean thrust that delivers maximum action.

But the best way to find out what all this means is to touch off the eager horsepower out on the highway by a gentle nudge of your toe—and feel your shoulders press deep in the cushions behind them.

Now all this sounds thrilling, you say, but how about the feed-bills for all these horses? How about miles-per-gallon?

The practical answer to that one is found in this year's experience with the SUPER and SPECIAL—and even the ROADMASTER.

In all three, the horsepower was stepped up at the start of the year—and in all three, happy owners report the best mileage in modern Buick experience.

This is due to a little-known but authentic engineering fact—which is that an engine burns less gas when it doesn't have to labor. At any normal driving speed, therefore, extra power is extra thrifty.

So we say again—if you're looking for power—mighty power—buoyant power—silken power—thrifty power—better buy Buick.

Your Buick dealer is eager for the chance to demonstrate how sound this hint really is.

Only BUICK has Dynaflow Drive® and with it goes HIGHER-COMPRESSION and with it goes HIGHER-POWER in three engines. Fireball valve-in-head power in three engines. (New V-263 engine in SUPER models.) • NEW PATTERN STYLING with MULTI-GUARD front, fender-through fenders • TRAFFIC-HANDY front, fender-through fenders • EXTRA-WIDE SEAT, less over-all length for easier parking and maneuvering, short turning radius • EXTRA-WIDE SEATS cradled between axles • SOFT BUICK RIDE, from all-leaf springing, safety-tube low-pressure tires, ride-steadying torque-tube • Standard on ROADMASTER, optional at extra cost on SUPER and SPECIAL models.

Tune in HENRY J. TAYLOR, ABC Network, every Monday evening.

YOUR KEY TO GREATER VALUE

Dean Buick Co.

N. CHEROKEE ST.

PHONE 330

KINGS MOUNTAIN, N. C.

WHICH BETTER AUTOMOBILES ARE BUILT BUICK WILL BUILD THEM