

NORTH CAROLINA CLEVELAND COUNTY NOTICE OF SALE OF PERSONAL PROPERTY

As Administratrix of the Estate of J. B. Self, deceased, I will offer for sale at public auction for cash in front of Hullender's Garage in the City of Kings Mountain at 12:00 o'clock Noon on the 30th day of December, 1950 certain mason tools and one Dodge truck described as follows:

Dodge truck is new, Model 1949, weight 4000 pounds, Motor Number T172-10969, Serial Number 82149671X.

This truck is practically new having been driven only about two (2) months. It may be inspected at any time prior to sale at the home of Mrs. J. B. Self just South of the City Limits on Highway No. 29.

This 28th day of November, 1950.

Mrs. J. B. Self, Administratrix of the Estate of J. B. Self, deceased.

D-1-22-H

NOTICE NORTH CAROLINA, CLEVELAND COUNTY.

The undersigned having qualified as Administratrix of the Estate of Mary Patterson, deceased, late of Cleveland County, this is to notify all persons having claims against said Estate to present them to the undersigned on or before the 23rd day of October, 1951, or this notice will be pleaded in bar of their recovery.

All persons indebted to said Estate will please make immediate payment to the undersigned.

This 23rd day of October, 1950.

MRS. BESSIE RAMSEUR, Administratrix of the Estate of Mary Patterson, deceased.

n-17-d-15-H

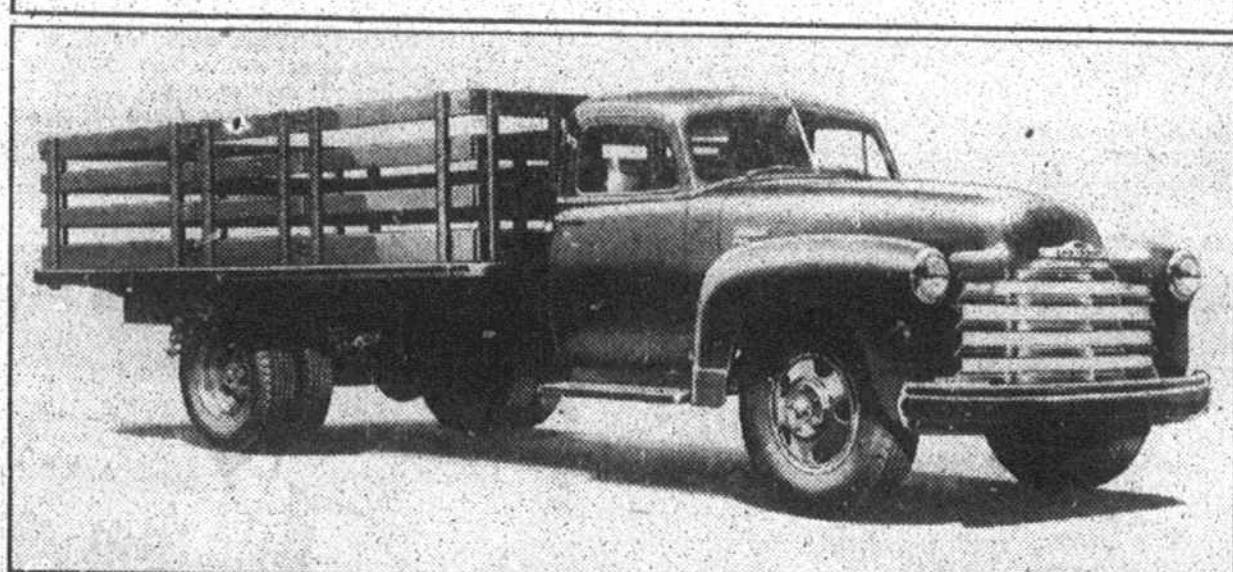
Notice to Stockholders

Notice is hereby given that the annual meeting of stockholders of the First National Bank will be held in the lobby of the First National Bank, Kings Mountain, North Carolina, on Tuesday, January 9th, 1951, at 4 p. m.

This is the first day of December, 1950.

L. E. ABBOTT, Cashier

Chevrolet Trucks Reveal 1951 Advances



Typical of improved 1951 Chevrolet trucks is this braking effectiveness and longer life. Adjustable vent-hy-duty stake model (Series 6409). Newly designed panes for better ventilation and a new spring seat "Twin-Action" brakes on rear wheels assure increased construction are among other high spots.

NORTH CAROLINA, CLEVELAND COUNTY. IN THE SUPERIOR COURT Industrial Equipment Company, By P. A. Clark, President, Plaintiff

Vs. Courtland Palmer, T/A Central Purchasing Department, Defendant.

NOTICE

Courtland Palmer, T/A Central Purchasing Department, the defendant above named, will take notice that an action entitled as above has been commenced in the Superior Court of Cleveland County, North Carolina, in which the plaintiff claims the sum of \$1,042.00, same being for the purchase price of the following described property: one rolling door 8' 10" by 6' 0" wide and two rolling doors 7' 2" by 5' 4" wide together with the necessary electric equipment to operate same.

Said defendant will also take notice that he is required to appear at the office of the undersigned Clerk of the Superior Court of Cleveland County on the 26th day of December, 1950, and answer or demur to the complaint, or plaintiff will apply to the Court for the relief therein demanded.

Said defendant will further take notice that in said action a warrant of attachment against the property of said defendant has been issued and the following property attached: one rolling door 8' 10" by 6' 0" wide and two rolling doors 7' 2" by 5' 4" wide together with the necessary electric equipment to operate same, and that said warrant of attachment is returnable before the undersigned Clerk of the Superior Court at his Office in said County on the 26th day of December, 1950.

This 10th day of November, 1950.

E. A. HOUSER, Clerk of the Superior Court

n-17-d-8-H



and SOCIAL SECURITY

By Leola M. Byerly, Field Rep. Gastonia Social Security Office

Since I first wrote about household employees coming under social security next January, the Bureau of Old-Age and Survivors Insurance and the Bureau of Internal Revenue have brought out a small booklet, issued jointly and entitled "Do you have A Maid?"

It is, I think, a model of clarity and brevity. It enables the household employer to determine quickly, whether her worker comes under social security. Its back cover is an addressed and free card to be torn off and mailed by those whose workers will be eligible for old-age and survivors insurance. In response to this card, the employer will receive the special form and the few instructions she will need for reporting her employees wages and for remitting the social security tax.

As I have said, not all domestic employees will be eligible for social security; consequently, not all household employers will need to mail in the post card contained in the booklet. Those who have a maid not more than one day a week will not make a report on that employee. Housewives who have a household worker on at least two different days a week, however, need the report form.

I say an average of two days weekly because that would add up to at least 24 days in a three-month period. Any household employee who works for you at least 24 different days in a calendar quarter meets the days-of-work condition for social security. They need not be full days. For instance, if you have a maid one morning to do the laundry, and on the afternoon of another day in the same week to clean house or get the dinner, she will have worked for you on two different days in that week. If that is her regular weekly schedule, she will have worked for you on at least 24 days in the calendar quarter.

Does the reference to "calendar quarter" puzzle you? Well, it won't once you've seen the little explanatory diagram in the "Do

A-H
ANTI-HISTAMINE TABLETS

stop COLD'S distresses IN MANY CASES the first day!

Fishing Rodeo Awards Presented

WILMINGTON, N. C. — The South Eastern North Carolina Beach Association brought its 1950 (fifth annual) Fishing Rodeo to a successful conclusion with presentation of awards at a dinner here.

Grand prize winners were: pier class, Earl A. Smith, Fayetteville, N. C., for an 11-ounce sheepshead; surf class, A. P. Faulkner, Wilmington, 5-pound, 8-ounce pompano; and deep-sea class, Arthur Newkirk, Wilmington, 30-pound king mackerel, a new record.

Each receiver a large, handsome trophy and a \$250 savings bond.

Second and third-place winners in the grand competition were: pier, Dirk Swart, Wilmington, 35-pound channel bass (red drum), and M. D. Pye, Jr., 32-ounce channel bass; surf, Mrs. Charles D. Wiggins, Richlands, N. C., 41-pound channel bass, and W. T. Guledge, Wilmington, 40-pound channel bass; and deep-sea, Linwood Roberts, Wilmington, 52-pound, 8-ounce sailfish, and R. Jesse Lewis, Wilmington, 17-pound, 2-ounce bonito.

SENCBA presented a total of 40 plaques as season's best fish awards in men's, women's, and children's classes.

The 1950 rodeo produced one world's record. O. L. Washam of Whiteville, N. C., set the mark with a 64-pound black drum caught on a 30-pound test line.

The rodeo was staged from July 1 through October. The SENCBA area extends from Jacksonville, N. C., to the South Carolina line. With their biggest and best rodeo now history, officials already are planning for next year's sixth rodeo.

You Have A Maid? booklet. What it means is simply this. The year is divided into four quarters. These are the three-month periods—January through March, April through June, July through September, and October through December. Each is a calendar quarter. Your maid must be employed by you on 24 different days in a calendar quarter, not just in any three consecutive months like March, April, and May.

If you employ a maid on 24 different days in a calendar quarter, and pay her not less than \$50 in cash wages for work in that quarter, she will come under social security and you will need to have the special report form that the post card from the "Do You Have A Maid?" booklet will bring you.

Just one thing more. The word, "Maid," in the title to the booklet means more than it says. It means any kind of household employee—male or female. A gardener or a governess, a chauffeur or a nursemaid will be eligible for old-age and survivors insurance protection beginning in January wherever their work for one employer meets the 24 days-\$50 cash wages conditions of the new social security.

If you have a household employee who is covered, get your copy of "Do You Have A Maid?" It is available now at Social Security Offices in Gastonia. A few copies are on hand for distribution in your local post office.

Early Chicks Are More Profitable

Tar heel poultrymen can earn extra money by starting chicks in December, January, or February, rather than later in the season, believes T. B. Morris, poultry specialist for the State College Extension Service.

Early-hatched chicks, says Morris, will come into production in the early summer when the old hens in the flock are slowing down in production. The young pullets will have good egg size by the time egg prices start rising, since prices are usually highest from June 1 to December 31.

Producing both early and late broods also will enable the poultryman to make better use of his buildings, equipment, and range, Morris points out. This will lower the cost per pullet. In addition, two broods a year will insure a more even supply of eggs to furnish the markets throughout the year.

One question often asked about early hatched pullets is: don't they have a tendency to go into a molt during the fall? Morris says this is expected, but if extra care is given the pullets in the fall this problem should be overcome or reduced to a minimum.

This extra care usually includes the use of electric lights to increase the working day to about 13 hours and feeding wet mash or pellets to help control the molt.

Early-hatched chicks can be profitable if managed profitably, insists Morris.

The specialist adds that before placing orders for next year's layers, the poultryman should give some thought to the breeding behind the chicks. These future pullets should be from production-bred stock with a pullet-clean or pullet-clean-passed rating. Orders should be placed early so the poultryman will be sure to get these better-bred chicks.

PMA committee elections will be held in North Carolina on December 14. The committeemen who are elected will help administer the 1951 Production and Marketing Administration programs of the U. S. Department of Agriculture, including the Agricultural Conservation program, price supports, acreage allotments, marketing quotas, and Federal crop insurance.

One farm worker can now produce food for 15 persons, whereas a decade ago he could produce for only 11.

EYES EXAMINED DR. D. M. MORRISON OPTOMETRIST

GLASSES FITTED

IN KINGS MOUNTAIN
On Each Tuesday and Friday Afternoons
Hours 1 to 5 P. M.
MORRISON BUILDING
Telephone 316-J

IN SHELBY
Monday, Wednesday and SATURDAY
8 A. M. to 5 P. M.
Tuesday and Friday
8 A. M. to 12 Noon
Royster Building
Dial 5981

EVENINGS BY APPOINTMENT

WHEN FATHER'S FRIEND, WHO'S BIG AND FAT SMASHED YOUR ANTIQUE CHAIR QUITE FLAT... IT'S TIME FOR **Cheerwine!**

At your party of one or twenty-one... at the banquet table or hot dog stand, CHEERWINE is RIGHT... and RIGHT at HOME!

Cheerwine is in tune with the American taste

DRINK Cheerwine

Keep a supply at home. Buy a 6-bottle carton or a case today!

ON ALL OCCASIONS CHEERWINE IS GOOD TASTE

If It's Good Coal You Want, Call Weir's Coal Telephone 195-W

It's A Black Business, But We Treat You White

PRESCRIPTION SERVICE

We Fill any Doctors' Prescriptions promptly and accurately at reasonable prices with the confidence of your physician.

Kings Mountain Drug Company THE REXALL STORE
Phones 41-81
We Call For and Deliver

REMNANTS

- Corduroy ● Gabardine
- White Lawn ● Rugs
- Sheeting 38 inches ● Sheeting 81 inches
- Nylon Laundry Bags
- Cotton Laundry Bags

VARIOUS OTHER ITEMS —At— REASONABLE PRICES

REMNANT STORE
J. E. HERNDON COMPANY
Phone 612
118 S. Battleground Rd. Kings Mountain, N. C.

Children Thrive on Sunrise Milk

Sunrise Milk is PASTEURIZED for extra safety.
Sunrise Milk is HOMOGENIZED for consistency
Sunrise Milk is packed in PURE-PAK cartons for extra convenience
Sunrise Milk comes from your farmer neighbor
Sunrise Milk is FRESH Everyday

Ask for **SUNRISE MILK**
You'll also like FIESTA Ice Cream—Buy it at your Dealers

Sunrise Dairy
Phone 6354 ● Gastonia, N. C.

You can pay more but you can't buy better!

The '51 FORD is built for the years ahead!

Why pay more for a car when you can't buy more beauty... more comfort... more get-up-and-go than you get in the '51 Ford with the 43 new "Look Ahead" features? These features are designed to make Ford stay young... stay in style... and stay savingest not for just a year—but for the years ahead!

Come in for the "LOOK AHEAD" facts on the '51 FORD

— with 43 "LOOK AHEAD" features! —

For '51, Ford brings you the last word in smooth driving—Automatic Ride Control. It self-adjusts to give you the right ride for every type of road condition. You get Ford's new Automatic Posture Control, too. It automatically adjusts the seat height and angle as you slide it forward and back. And you get Ford's Automatic Mileage Maker, to give you automatic gas savings through the years ahead. And, best of all, this '51 Ford offers you Fordomatic—the smoothest, newest and savingest automatic drive ever!

And comfort, and savings aren't all! The '51 Ford offers you "Fashion Car" Styling that's a match for any car at any price. In Ford's "Luxury Lounge" interiors, the dash colors, and the new "Color-Keyed" Fordcraft Fabrics on seats and ceilings are all custom-matched to exterior colors. But look at the exploded view of the car above for the rest of Ford's "Look Ahead" features. Better still come in and see for yourself why folks with an eye to the future have an eye on Ford.

PLONK MOTOR COMPANY
Battleground Ave. Phone 138 Kings Mountain, N. C.