

Marine Applicants, In Draft, Rejected

RALEIGH. — Applicants for enlistment in the Marine Corps, who have received selective service notices to report for pre-induction examination, will be rejected, Capt. M. D. Smith, Jr., director of Marine recruiting for the state of North Carolina announced today.

In the past, the captain explained, many men have delayed their decision as to whether or not to enlist, until the last moment, then found they had no choice as to which branch of the service they desire.

The Selective Service Act of 1948, provides that individual will be accepted for voluntary enlistment or re-enlistment in the Marine Corps after he has received orders to report for pre-induction examination.

Men desiring to serve in the Marine Corps, must volunteer prior to receipt of notice for their pre-induction examination from their local draft boards.

Applicants for enlistment in the Marines, Capt. Smith said, are now required to sign a statement that they have not received such notice prior to acceptance.

CHRISTMAS SAFETY RULES

TRAFFIC

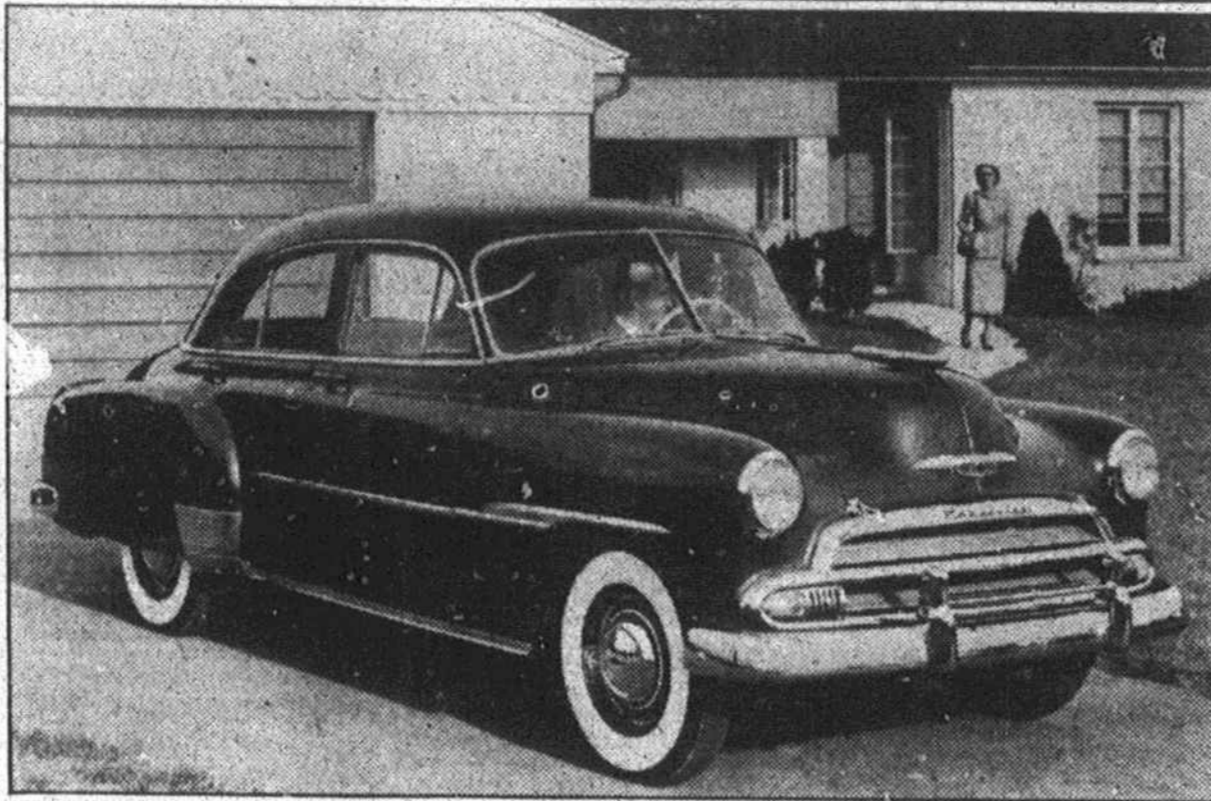
1. Use extra care for the extra holiday hazards.
2. Put the Christmas spirit of "good will" into your attitude toward drivers and pedestrians.
3. Don't let Christmas packages obstruct your vision when walking.
4. Don't drive if you drink—and vice versa.
5. Start in time and take it easy. Allow for winter weather and extra holiday traffic.

HOME

1. Check your home for anything that might cause an accident.
2. Keep your Christmas tree in water and away from flames.
3. Use electric tree and window lights—no lighted candles ever. Don't leave tree lights on when you are out of the room for a considerable time.
4. Check your electrical connections for shorts and workout wires.
5. Keep flimsy Christmas decorations and wrappings away from the fireplace.

California's 1950 lemon crop is estimated at 12½ million boxes, compared with 10½ million produced last season.

Fresh Chevrolet Styling Imparts Lower Lines



The Styleline De Luxe four-door sedan is one of 14 models introduced by Chevrolet as its passenger line for 1951. Notable in this picture are the rear fender crowns raised. Models also offer added design improvements which accentuate a longer, safety.

George Copeland At Winthrop Friday

ROCK HILL. — George Copeland, distinguished American pianist, will appear at Winthrop college Friday (December 8, at 8 p. m. in the Winthrop auditorium.

Critics consistently have described Copeland's playing in estatic terms. He has long been noted for his interpretations of modern Spanish and French compositions.

Born in Boston, Copeland received his early training there. He studied later in Italy and Berlin. He has performed with symphony orchestras in Vienna, Paris, London, Barcelona and Madrid, and has been a frequent soloist with the Boston and Philadelphia symphony orchestras.

Copeland is credited with introducing to America to works of the French composer, Claude Debussy. For his Winthrop concert, he will play five Debussy numbers. Among them will be

the familiar "Claire de lune". A net profit of \$168.61 on one acre of corn was made this year by Curtis Ward, Negro 4-H Club boy of Halifax County.

LAND

● **POSTED NOTICES** ●

20c Per Dozen—\$1.65 Per 100

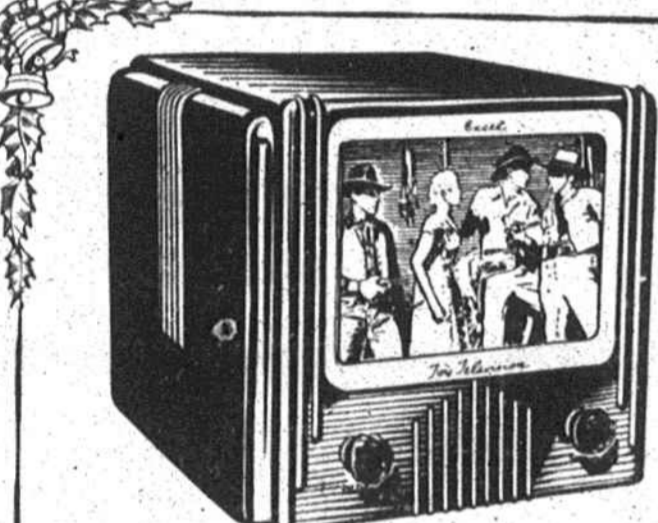
At The
Kings Mountain Herald Office

Phones 167 and 283

SUBSCRIBE TO THE HERALD

HOUSE of SANTA CLAUS

Gifts for All...



TOY TELEVISION SET

First toy with regular TV features! Has built-in 16mm movie projector with "rear projection"—giving a clear, steady picture. Electrically operated music! movement plays popular western tune. Complete with one 50-foot western movie. 110 volt, AC.

\$24.95

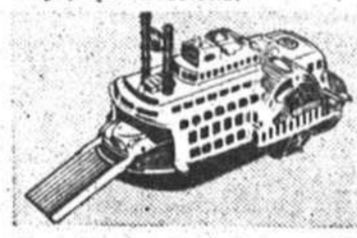
as low as **\$2.50** **\$1.25** Down Weekly



Educational And Fun AMERICAN LOG SET

Construct cabins, stockades and many pioneer structures with this interlocking log set. Includes roof planking, chimneys, split sections.

98c



RIVER BOAT \$1.49

"River Queen" steamboat has a powerful spring motor which turns the paddle wheels on land or water. Gangplank raises. Includes two cars.



Gilbert No. 1032 Puzzle Set

Puzzles for children and grownups. Instruction book with complete solutions. Other Sets \$2.00, \$3.50

\$1.50



New Gilbert Lab Chemistry Set

Contains 23 pieces of chemicals and apparatus. OTHER SETS \$7.95

\$1.75



Be On The Right Track... Give This Streamlined Diesel Electric Passenger Train

● Streamlined 5-unit set
● Complete with track and transformer

\$7.95

Modeled after new streamliner trains. Locomotive has oilless bearings and transformer, 12 sections of track. Train measures 35" overall.
OTHER ELECTRIC TRAINS \$9.95 to \$22.95
MECHANICAL TRAINS \$2.98, \$4.49

New 1951 Chevrolet To Be Displayed At Victory Chevrolet Co. Saturday

Added safety, greater driving ease and freest re-styling high-spot the 1951 Chevrolet which goes on display in Kings Mountain Victory Chevrolet Company showroom Saturday.

Important improvements and changes are featured in both chassis and body. These changes range from the "biggest brakes in the low-price field" to extensive design innovations that make the car appear much longer and lower than any previous model.

The Powerglide automatic transmission, Chevrolet's sensational driving advance, has been refined for the latest models, although remaining fundamentally the same flexible driving control that has already enrolled a quarter of a million satisfied owners. It will again be optional on De Luxe models only.

Fourteen passenger body types are included in the 1951 line. Two- and four-door sedans will be available in Styleline and Fleetline series. All sedans and the sport coupe will come in De Luxe or Special trim. A convertible coupe, all-steel station wagon and the Chevrolet Bel Air, which has scored so sensationally in popularity, are exclusively in De Luxe series. The business coupe will available only as a model in the Special series.

In addition to more luxurious interior treatment Chevrolet is offering a more beautiful and

attractive assortment of colors. The options, which include two-tone combinations, are livelier than ever.

The new "Jumbo Drum" brakes headline the qualities of the car directed toward safer operation. Quicker emergency stops are assured by a brake which involves considerable departure from past design. Every brake shoe, fitted with the long-life bonded lining made famous by Chevrolet, is self-energizing in both forward and reverse travel, giving a consistent, surge-free operation that will please drivers.

New brakes also qualify as an aid to driving ease. Tests show 25 per cent less pedal pressure required in stopping at given rates of speed. Better brake seals and virtual elimination of the possibility of brake grabbing are other advantages.

Of almost equal interest are recessed control knobs in the driver's compartment. All protrusions are now set below the smooth contours of the instrument panel. Shielding of the windshield from instrument light reflections is as well provided by a rounded ledge above the panel. Subdued lighting of dials for nighttime driving is still another safety asset.

Important as it will affect parking is an increase in steering gear ratio. Other points worthy of mention under driving ease are new convenience of controls, relocated brake pedals, reduced vibration through greater torque tube rigidity and a new method of propeller shaft balancing in production.

Appearance-wise the improvement is discernible even to a casual observer. Changes both as the front and rear enhance the impression of ruggedness and room. The radiator grille has been restyled and simplified. The design now consists of three horizontal bars, the lower two extending further across the fenders to form a circular frame for parking lamps. Frontal beauty is additionally embellished by new bumper guards, emblem and hood ornament which carries a jet-craft form.

The crown of the rear fenders has been raised to increase the sleek, flowing lines of the body. Fenders now mount the combination stop and tail light, with a newly styled trunk lid ornament and re-designed bumper guards blending into the overall effect.

The De Luxe and Special series will again be distinctive. Exteriors of the De Luxe bodies have a greater amount of chrome and stainless steel trim and are distinguishable on the highways by a mounding which starts just above the wheel opening in the front fenders and is extended into the doors.

For 1951 Chevrolet offers two economical valve-in-head engines. The standard engine develops 92 horsepower while the optional power plant, available on De Luxe models with Powerglide, develops 105 horsepower.

GOLDEN GUERNSEY MILK

produced on **Archdale Farms**

from carefully selected cows Free of Tuberculosis and Bangs Disease.

Properly and Carefully Fed to Produce High Energy and Premium Quality Guernsey Milk.

Nothing Added... Nothing Taken Away
Golden Guernsey has a Taste Appeal that Children Like.



Fresh Yard Eggs
produced on Archdale Farms Delivered with milk.

Archdale Farms
Phone 459-J-1

Our Venetian Blinds are all - metal, with solid ladder - woven tape or plastic tape. Choice of colors in tapes and slats.

Buy Direct from the manufacturer and Save!

Novelite Venetian Blind Mfg. Co.
York Road Oliver Falls, Proprietor
Novelite Prices are ALWAYS Competitive

MAMA TIRED?

Large Selection GIFTS—Cosmetics, Candies, Photo Supplies, Fountain Pens, Kiddie Gifts

Old Spice EARLY AMERICAN

Smart Santas are giving Whitman's CHOCOLATES
The World Famous SAMPLER
1 lb. \$2.00 2 lbs. \$4.00
Other Whitman's Assortments Ideal For Gifts

MEN'S SET 2.00

Regardless what his shaving method or if he shaves electrically, give him brisk, bracing Old Spice After Shave Lotion and skintoned Talcum in sturdy, man-size bottles. He'll love you for it.

FOR EASY SHOPPING Try the **DRUG STORE** first!

GRIFFIN DRUG CO.

We Fill Any Doctors Prescription Anytime

Phone 8

Make Her Christmas

... Pretty and Merry

Give Her Reigning Beauty Hosiery

... in different, flattering styles. She can wear on so many occasions.

\$1.19 pr.

51-gauge — 15-denier
First Quality

Belk's

Dept. Store
Home of Better Values

TOYLAND

LARGEST SELECTION OF TOYS IN TOWN
OPEN FRIDAYS 'til 9 P. M.

CITY AUTO & HOME SUPPLY
247 Battleground Rd. Telephone 522-J

B.F. Goodrich

House of Santa Claus