

### What's Your Home Worth To You?

Is it worth the few dollars a year that it takes to give you protection from fire . . . Just think—there are 365 days a year that your home could burn to the ground. Good insurance can start a re-building program in case of fire. It'll be a big step in getting you back on your feet. SEE US TODAY!

**The Arthur Hay Agency**  
ALL KINDS OF INSURANCE  
Phone 182



### HARRIS FUNERAL HOME

—Ambulance Service—  
Phone 118 Kings Mountain, N. C.

## Rail oddities

**A RAILROAD PRESIDENT WHO LIKES TO SING GRAND OPERA INDULGES HIS HOBBY BY JOINING THE CHORUS OF THE "MET" WHEN BUSINESS TAKES HIM TO NEW YORK.**

**AMERICA'S NO. 1 MASTER OF ANIMATION FILMS—WALT DISNEY—PUSHES RAILROAD MODEL-BUILDING AS A HOBBY—BUILT AND OPERATES HIS OWN 1/4" SCALE MODEL TRAIN WITH COAL-FIRED LOCOMOTIVE CAPABLE OF PULLING A LOAD OF 3,000 POUNDS.**

**REBUILDING ITS BRIDGE ACROSS THE OHIO RIVER, A RAILROAD (1) MOVED AN OLD SPAN OFF ITS PIERS IN 57 MINUTES; (2) MOVED A NEW 515-FOOT SPAN TO THE SAME PIERS IN 75 MINUTES; (3) HOOKED UP THE TRACKS AND RESUMED FULL MAIN LINE OPERATIONS ALL WITHIN 20 HOURS.**

ASSOCIATION OF AMERICAN RAILROADS

## College Hints To Farm Homemakers

By Ruth Current  
State Home Demonstration Agent

**Kitchen Travel** — Don't store outside the kitchen — in pantry, basement, dining room, back room, cellarway, milk house or porch — items that are used often in preparation of three meals a day. Shorten your walk distance simply by providing work space near sink and refrigerator. Too often equipment is isolated from work counters. Many families continue to keep things where they have always been kept instead of taking advantage of possibilities offered by their kitchens for storing supplies and equipment within easy reach of where they are used.

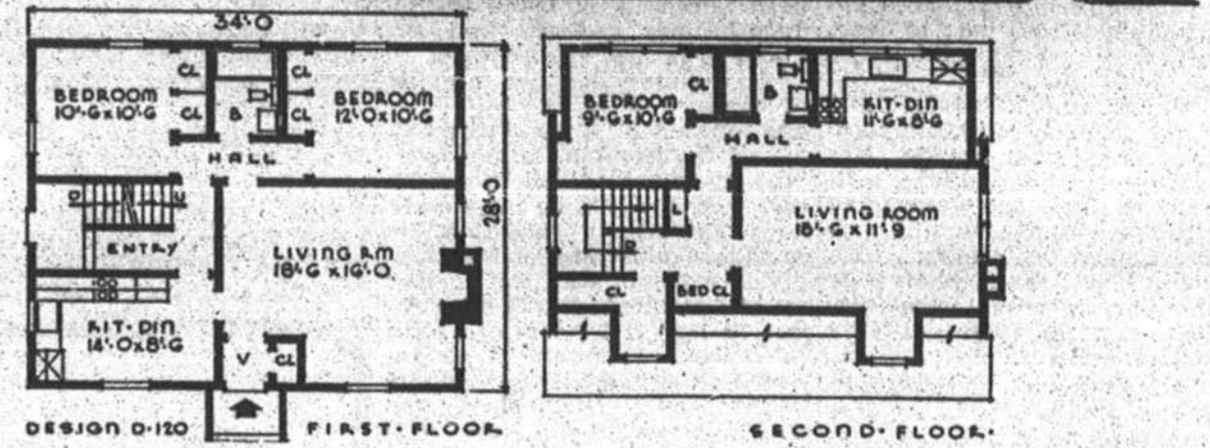
**Paint Protection** — Any paint can be damaged by strongly alkaline soap or other cleaners, abrasive powder, and rubbing. Home management specialists say, Coarse scouring powder and strong cleaners remove or roughen the smooth outer surface of the paint so that it soils faster and is more difficult to clean. Strong alkali can weaken and also discolor paint.

It is wise to try out any new cleaning preparation on an inconspicuous part of the paint first, carefully following directions that come with it as to how much and how to use.

In washing paint, it is important to wash only a small area at a time and rinse carefully before moving on to another area. Even a mild soap contains some alkali that will eventually injure paint if left on it. Directions for some commercial paint cleaning preparations suggest that no rinsing is needed. Yet many are highly alkaline, say specialists, and will damage the surface if left on.

Some cleaning solutions make the paint soft while it is wet and then rubbing can damage it. With such cleaners there may be less damage from leaving a very little cleaner on the surface than from rubbing while rinsing. Be sure to use only the amount of cleaner suggested in the directions. Some of the new detergents, like soap, are alkaline; others are slightly acid or neutral. They are satisfactory for washing painted surfaces in the kitchen or wherever a greasy film has formed.

## Herald "House-of-the-Week"



THE DOUGLAS has a Cape Cod exterior, with the second floor entrance on the side concealing the fact that this is a duplex. Tenants on the second floor have direct access to the basement laundry.

Rooms on the second floor include living room, bedroom and kitchen-dinette. A bed closet provides space for a roll-away bed and one dormer is a large closet. Living room, kitchen-dinette, two bedrooms and bath complete the first floor. Bedroom closets are the wardrobe type with separate storage space above.

Frame construction is used throughout this house, which is finished with siding and asphalt shingles.

The called-for dimensions of THE DOUGLAS are listed as 34 feet by 28 feet. Overall floor area is planned for 952 square feet, while the cubage is 23,800 cubic feet.

For further information about THE DOUGLAS, write the Small House Planning Bureau, St. Cloud, Minn.

## First National Bank

PRESENTS INTERESTING FACTS ABOUT NORTH CAROLINA



### THE STATE FLOWER—The Dogwood

Legend says that during Christ's time, the Dogwood was so tall and strong, it was chosen to furnish the timber of which the cross was made. This distressed the tree and Jesus said to it, "Because of your sympathy for My suffering I promise you this. Never again will you attain such size that you can be used as a cross. Also your blossoms shall be in the form of a cross with two short and two long petals, and at the outer edge of each of your petals, in the center, shall be the print of the nail and in the center of your flower, which shall appear stained with blood and brown with rust, there shall be a crown of thorns."

Our friendship ties should never be broken if possible. They grow sweeter and more comforting with age.

Likewise, your banking connections develop into fine spirit of understanding and mutual cooperation that grows stronger with time and experience.

**FIRST NATIONAL BANK**

## PERSONALS

**Letter To Editor**  
Richmond, Va.

Dear Mr. Harmon:  
As there is a certain place that is said to be paved with good intentions never carried out; I am trying to fulfill an intention several weeks old to keep at least one of mine out of the pattern of that "good intentions never fulfilled paving."

I wish to congratulate you and your force on the award recently received as to the general make-up of your paper and as to your editorial page. I am an avid reader of every North Carolina paper I get hold of, and the Seaboard and Southern trains crews bring me many weeklies as well as dailies, and I am proud to say that yours is outstanding among the country weeklies. Your editorial page, in my opinion, and while very often I disagree with you, is well written, fitting, and always to the point. And I do not think your local news coverage could be improved upon.

Again my congratulations and with the wish you will continue to make it what it is now, one of the best country weeklies.  
Sincerely yours,  
Leslie McGinnis.

**Makes Good Yield With 12 Dustings**  
Despite unfavorable weather and heavy boll weevil attacks in his section, Nathan Legrand, Negro farmer of Route 1, Mt. Gilthead, produced 2,002 pounds of seed cotton per acre last year.

According to W. F. Wright, Negro farm agent in Richmond County for the State College Extension Service, Legrand entered five acres of his cotton crop in the State Five-Acre Production and Quality Contest and did a good job of following extension recommendations.

He used Coker 100 wilt resistant seed and applied 800 pounds of 4-10-6 fertilizer and 100 pounds of nitrogen material per acre.

One practice to which he devoted a great deal of attention was insect control. He applied benzene hexochloride dust six times with a tractor duster at the rate of eight to 10 pounds per acre. Six additional applications of dust were made with an airplane.

Legrand started applying insecticides early, on June 27 just before squaring, and made succeeding applications at intervals of seven to 10 days.

Whole blood shipments to Japan and Korea for wounded fighting men have been carried on regularly by the American Red Cross since last August, thanks to blood donations by the public through the organization's regional blood centers. Reserve stocks of blood plasma supplied earlier through the Red Cross also have been used extensively, particularly during the early days of the war.

**No Man or Woman Can Enjoy Life With Stomach Gas!**

Poor digestion—swelling with gas after meals—heavy feeling around waistline—rifting of sour food. These are some of the penalties of an Upset Stomach.

CERTA-VIN is helping such victims right and left here in Kings Mountain. This new medicine helps you digest food faster and better. It is taken before meals; thus it works with your food. Gas pains go! Inches of bloated vanish! Contains Herbs and Vitamin B-1 with Iron to enrich the blood and make nerves stronger. Weak, miserable people soon feel different all over. So don't go on suffering. Get CERTA-VIN — Kings Mountain Drug Company.

**FLOOR COVERINGS**

Inlaid Linoleum and Rubber Tile, Installation by factory-trained mechanics. No extra charge for necessary sanding.

Big variety of colors, suitable for home, business, or office.

See our new samples of MORAWK carpet.

**NOVELITE**  
Venetian Blind Co.  
York Road

**FOR RESULTS FEED**

# Pinnacle Laying Mash

We also manufacture:

- Starting Mash
- Hi-Energy Broiler Mash
- 16% Dairy Feed
- Pig Starter & Grower
- Big Hog Feed
- Mix Feed

Your needs with regard to custom mixing will have our most careful attention.

We can furnish most any protein concentrate such as Fish Meal and Meat Meal.

Ask Your Dealer

## Ware & Sons

KINGS MOUNTAIN, N. C.

**3 Subscribers**  
to our knowledge  
**Did Not Receive**  
their HERALDS last week

The Address Labels Slipped Off And They Were Returned By The Postoffice.

**Let Us Know**  
When You Fail To Get Your Copy

PHONE 167 or 283  
or Write: CIRCULATION DEPARTMENT

# Kings Mountain Herald

Check the Expiration Date printed on the Address Label on your HERALD. Renew Promptly!

In every single state...

*First in demand...*

*First in value...*

*First in sales!*

**CHEVROLET**  
ADVANCE-DESIGN TRUCKS

Coast to Coast and Border to Border  
**MORE CHEVROLET TRUCKS IN USE THAN ANY OTHER MAKE!**

In 1950, truck buyers in every one of the 48 states chose Chevrolet over any other make. Nationally, Chevrolet has outsold any other truck for the last nine truck production years. That's because Chevrolet trucks do the job better . . . stay on the job longer. When you choose a Chevrolet truck, you get the right engine—92-h.p. Thriftmaster or extra-powerful 105-h.p. Loadmaster. You get a chassis that fits your job. You get a truck built to move your loads at lowest cost. Come see the new 1951 Advance-Design Chevrolet trucks.

## VICTORY CHEVROLET COMPANY

CORNER MOUNTAIN & RAILROAD • PHONES 48 and 418 • KINGS MOUNTAIN, N. C.