

Church Notices

BOYCE MEMORIAL ARP CHURCH
 William L. Pressly, Minister
 Church School 10 a. m.
 Lewis Hovis, Supt.
 Morning worship 11 a. m.
 Cub Scouts Monday at 8:30.
 Circles of W. M. S. Monday afternoon and evening.
 Candle Light Communion Thursday evening at 8:00.
 Come and worship with us.

TEMPLE BAPTIST CHURCH
 Rev. W. F. Monroe, Pastor
 Sunday School 10 a. m.
 Paul Ledford, Gen. Supt.
 Morning Worship 11 a. m.
 BTU 6 p. m.
 MIHed Putnam, Director
 Evening Worship 7 p. m.
 Wednesday—
 Prayer Service 7 p. m.
 Visitors Are Welcome To All Services

FIRST PRESBYTERIAN CHURCH
 P. D. Patrick, Minister
 Sunday—
 9:45 Sunday School.
 Harry Page, Supt.
 11:00 Morning Worship.
 Sermon: "Who is This?"
 3:00 Dixon, Sunday school and church, J. G. Darracott, Supt.
 5:15 Presbyterian Youth Fellowship meet at church to go to Lincolnton.
 8:00 Sacred concert by Choral Society.
 Monday—
 7:00 Boy Scouts.
 Tuesday—
 10:30 a. m. Women of Church meet with Mrs. P. G. Padgett.
 Wednesday—
 10:30 a. m. Women of Church meet with Mrs. Arthur Hay.
 3:30 Brownie Troop.
 6:30 Girl Scout Troop.
 7:30 Adult Choir Rehearsal.
 Thursday—
 10:30 a. m. Women of Church meet with Mrs. C. D. Blanton.
 Friday—
 3:30 Junior choir rehearsal.

MISSIONARY METHODIST CHURCH
 Second Street, Cora Mill
 Services
 Rev. H. Spurgeon Scruggs Pastor
 Kings Mountain, N. C.
 Sunday—
 J. J. Sisk, Supt.
 Morning worship 11 a. m.
 Young People's Society 6:30 p. m.
 Evangelistic 7:30 p. m.
 Thursday prayer meeting 7:30 p. m.

FIRST CHURCH OF THE NAZARENE
 Rev. C. E. McKenzie, Pastor
 Sunday School 9:45 a. m.
 Ben B. Short, Supt.
 Morning Worship 11 a. m.
 Young People's service 6:30 p. m.
 Evening Worship 7:30 p. m.
 Wednesday 7 p. m. prayer meeting.
 Saturday 7 p. m. Laymen's prayer meeting.

PARK GRACE CHURCH OF THE NAZARENE
 Rev. Clay Childers, Pastor
 Sunday school 10:00.
 Supt. Raymond Gregory.
 Morning worship 11:00.
 Young People's service 6:30.
 Herman Ruff, president.
 Evangelistic service 7:30.
 Midweek prayer service Wednesday evening at 7:30.
 Radio program: "Showers of Blessings" each Sunday morning at 9 a. m. over WGNC, Gastonia.

CHURCH OF GOD
 Corner of Parker and Gaston
 Rev. Glenn G. Eason, Pastor.
 Sunday school 10 a. m.
 Preaching 11 a. m.
 Night service 7 p. m.
 Saturday night YPE 7 p. m.

FIRST BAPTIST CHURCH
 T. L. Cashwell, Jr., Pastor
 Sunday—
 9:45 a. m. Sunday School.
 11:00 a. m. Morning Worship.
 Sermon by the Pastor.
 6:15 p. m. Baptist Training Union.
 8:00 p. m. Kings Mountain Choral Society Program at High School Auditorium.
 Monday—
 7:30 p. m. Gleaners' Class meeting. Mrs. James Edward Littlejohn, hostess.
 Tuesday—
 3:45 p. m. Youth Choir rehearsal.
 Wednesday—
 7:30 p. m. Prayer meeting.
 8:15 p. m. Senior Choir rehearsal.
 Friday—
 3:30 p. m. Youth Choir rehearsal.

SECOND WESLEYAN METHODIST CHURCH
 Rev. Y. H. Carter, Pastor
 9:45 a. m. Sunday school.
 Wednesday: 7 p. m. Prayer meeting.
 7:00 p. m. Evening worship.

MACEDONIA BAPTIST CHURCH
 Rev. Robert L. Hardin Pastor
 Sunday—
 9:45 Sunday School.
 11:00 Morning Worship.
 6:00 p. m. B. T. U.
 7:00 p. m. Preaching service.
 Wednesday—
 7:00 Mid-week prayer service

MOUNTAIN VIEW BAPTIST CHURCH
 Rev. Floyd Hollar, Pastor
 Crowders Mountain Community
 Sunday—
 10:00 Sunday school, Paul Camp, Supt.
 11:00 Morning service.
 7:30 Evening service.

BEN'S MISSIONARY BAPTIST CHURCH
 George Lay, Pastor
 Located one mile West of Margrace Mill
 You are invited to attend services Saturday night, Sunday morning and Sunday night.

CORINTH PRIMITIVE CHURCH
 Elder E. H. Simpson, Pastor
 W. Gold St. near Bridges Airport
 Preaching services:
 First Sundays 2 p. m.
 Third Sundays 11 a. m.

BETHELEHEM BAPTIST CHURCH
 T. W. Fogleman, Pastor
 Morning service 11 a. m.
 Sunday school each Sunday at 10 a. m.
 Lamar Herndon, Supt.

L. B. Fink, of Faith, Rowan County, is gaining a national reputation as a breeder of guinea pigs.

More than 3,000,000 people visited the three National Forests in North Carolina in 1950 — Pisgah and Nantahala in the mountains and Croatan on the coast.

Turkeys on farms January 1 numbered nearly 6 million, about the same as a year earlier but down from averages by 14 percent.

Check the Expiration Date printed on the Address Label on your HERALD every week. Renew promptly! \$2.50 a year; \$1.40 six months; 80c three months.

Just Announced SPRED SATIN decorator colors



Now you can achieve your finest deep-tone decorating in half the usual painting time, with perfect results using SPRED SATIN decorator colors. There is no muss or fuss, just stir and apply... dries to touch in twenty minutes... when you are through simply wash the brush and pail under water faucet. SPRED SATIN deep-tone decorator colors hold their fresh-look longer and they wash better and easier than conventional oil paints. Come in—see the wonderful new deep shade colors.



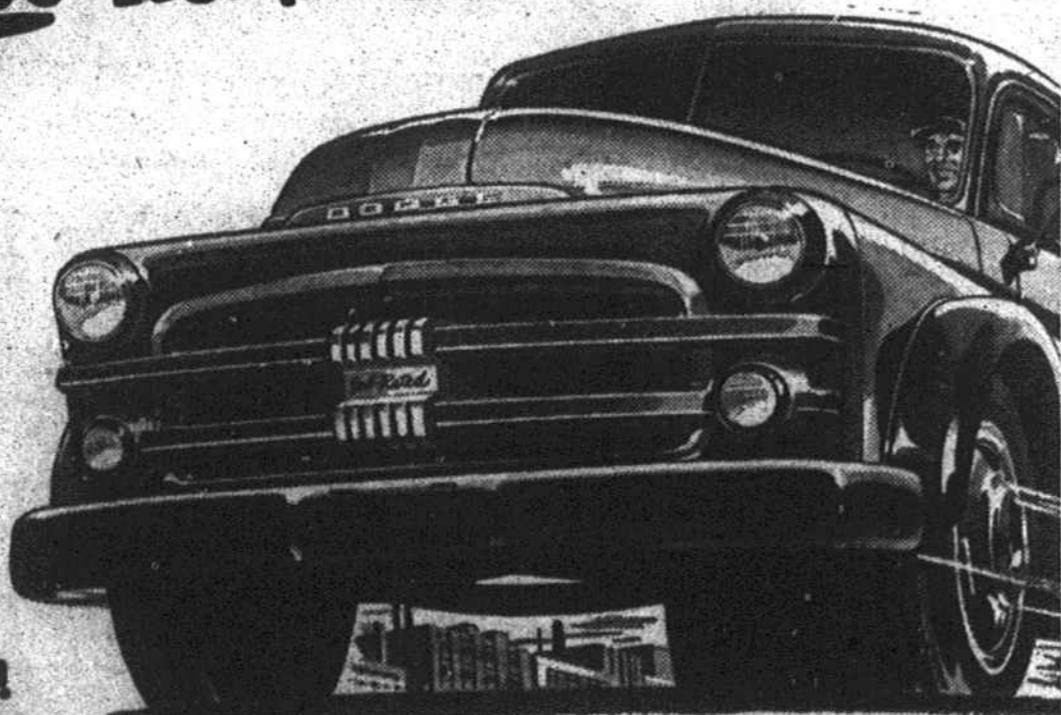
\$5.19 GAL. \$1.59 QT.



The Herald \$2.50 Per Year

For the best that's new...

SEE THE NEW DODGE "Job-Rated" TRUCKS



The trucks that do the most for you!

NEW! More Power

Power increases as high as 20%. Eight high-efficiency truck engines—94 to 154 horsepower. The most powerful Dodge "Job-Rated" trucks ever built provide dependable power for your job!

NEW! Better Economy

Higher compression ratio (7.0 to 1) on models through 1 ton, for top efficiency with flashing power. Here's real economy with outstanding performance—more power from every drop of fuel.

Exclusive! *gyral* Fluid Drive... Available on 1/2-, 3/4-, and 1-ton models. Provides unrivaled smooth performance with cushioned power.

PLUS all these time-proved features Dodge trucks have had for years...

Steering column gearshift standard on 1/2-, 3/4- and 1-ton models with 3-speed transmission. Chrome-plated top piston ring for longer ring life, better sealing. Synchronizer transmissions (3-speed, 4-speed, or 5-speed) rugged, silent, precision engineered. DeLuxe and Custom cabs (with rear quarter windows) available on all models. And many other dependability features!

What "Job-Rated" means to you

A Dodge "Job-Rated" truck is engineered at the factory to fit a specific job... save you money... last longer. Every unit from engine to rear axle is "Job-Rated"—factory-engineered to haul a specific load over the roads you travel and at the speeds you require. Every unit that SUPPORTS the load—frame, axles, springs, wheels, tires and body—is engineered right to provide the strength and capacity needed. Every unit that MOVES the load—engine, clutch, transmission, propeller shaft and rear axle—is engineered right to meet a particular operating condition.

NEW! Easier Handling

Shorter turning diameters than ever—and extra-easy steering with new worm-and-collar gears. Short wheelbase, cross-steering and wide front tread assure easier maneuvering.

NEW! Greater Safety

Molded Cyclebond brake linings on hydraulic-brake models 1 1/2-ton and up. Brand-new! Extra-quiet! Other safety features include new, improved independent hand brake, extra-big windshield.

NEW! Bigger Payloads

Increased Gross Vehicle Weights and Gross Combination Weights on many models—made possible by increased rear axle capacity and "Job-Rated" weight distribution. Help cut your trucking costs!

NEW! Better Comfort

"Oriflow" shock absorbers, standard on 1/2-, 3/4-, and 1-ton models. New! Revolutionary! Self-adjusting! New seat design, new steering wheel angle—plus lower hood line for improved visibility.

Come in for a good deal on a truck that fits your job... a **DODGE TRUCK**

REYNOLDS MOTORS

Kings Mountain

Bessemer City

Dixie-Home Invites You to Attend...

Dixie Thrifty's 1st Anniversary SALE!

One year ago last March, Dixie Thrifty joined the Dixie-Home family and began her 7-point customer service program. These 7 points: QUALITY, COURTESY, THRIFTY PRICES, CLEAN STORES, VARIETY, FRESHNESS, and CONVENIENCE are the principles of Dixie-Home's service. Come in this week and celebrate and save during Dixie Thrifty's 1st Anniversary Sale!

- 8-Oz. Pkg. 5c With 12-Oz. Pkg. Reg. Price
- Post Toasties . . . Both 26c
- Try The New Tasty Fish Recipes—Alaska
- Chum Salmon . . . Lb. 48c
- Real Fresh Fruit Taste—Dixie-Home
- G'fruit Juice . . . 46-Oz. 25c
- Libby's Rich in Flavor and Vitamins
- Tomato Juice . . . 46-Oz. 28c
- Nationally Advertised Maxwell House
- Coffee Lb. 84c

Vegetable Shortening
SNOWDRIFT
 3-Lb. Can \$1.07
 Enter \$18,000 Contest; Red Band
FLOUR
 2200 Priced
 Two 11-Day 10-Lb. Bags \$1.07
 Trips to St. Paul for \$1



- Delicious! H! C
- Orangeade . . . 46-Oz. 25c
- Chicken Of The Sea Bite Size
- Tuna Fish 1-Size 35c
- For Quick Meals—Swift's
- Roast Beef 12-Oz. 49c
- Dixie-Home Quality Creamy-Rich
- Peanut Butter . . . 12-Oz. 31c
- Paas Pure Food Colors Easter
- Egg Dye Reg. 10c Med. 15c
- So Easy To Fix . . . Just Add Water—Enzo
- Tomato Aspic . . . 3 1/2-Oz. 23c
- Fortified With Liver—Dash
- Dog Food 2 1-Lb. 29c
- Duke's Home Made Uncooked
- Mayonnaise Pint 41c
- Water Maid Fine Short Grain
- Fancy Rice 3-Lb. 43c

- ### SEAFOOD
- Easy to Prepare Fresh Red
- Perch Fillets Lb. 41c
 - Ready to Fry Tasty
 - Cod Fillets . Lb. 33c
 - Tasty, Fresh
 - Porgies Lb. 15c

- More Meat For Your Money! Economical Flavorful; Loin End
- Pork Roast Lb. 53c
 - Delicious Barbecued or Roasted! Country Style Fresh
 - Pork Back Bone . . . Lb. 49c
 - For Meals That Are Thrifty As Well As Appetizing!
 - Economy Pork Chops Lb. 49c
 - Make Juicy Brown-Crusted Meat Loaf! Quality Tender
 - Fresh Ground Beef . Lb. 69c
- Select Tender Sliced
- Beef Liver . . Lb. 85c
 - Quality-Tender Chuck
 - Beef Roast . . Lb. 73c
- ### DAIRY VALUES!
- Dixie-Home Quality
- Butter 8-Oz. Pattie 40c
 - Southern Gold Colored
 - Margarine Lb. 33c
 - Economical Savory
 - Cheese Food . 2-Lb. Box 93c

Add Color and Flavor To Your Meals With Crisp Bright Red

Radishes . . 2 Lbs. 11c

Windmill large or small pkg.

- Gladoli Bulbs 43c & 69c
- New Crop Red Bliss
- Potatoes 5 Lbs. 33c
- Fancy Yellow Crookneck
- Squash 2 Lbs. 17c
- Crisp California Iceberg
- Lettuce Lge. Head 12c
- U. S. No. 1 Irish
- Potatoes 10 Lbs. 39c
- Firm Fancy Slicing
- Tomatoes Ctn. 31c
- Fresh Sweet Golden Santam
- Corn 3 Ears 33c
- Washington State Delicious
- Apples 3 Lbs. 35c

Rich Source of Vitamin C—Fresh Tender

Turnip Greens . . . 2 Lbs. 23c

For Fine Cooking

WESSON OIL

Pint Bot. 39c

Strained Baby Food

GERBER'S

3 Jars 29c

Dry Milk Solids

CLOVERLEAF

7-Oz. Pkg. 16c

Hi Ho Crackers

SUNSHINE

Lb. Pkg. 31c

Blended Shortening BAKE-RITE 3-Lb. Can \$1.03	Fresh Potato Chips GORDON'S Lge. Pkg. 29c	Granulated Soap IVORY SNOW Lge. Pkg. 32c	Household Cleanser SPIC & SPAN Pkg. 25c
Oceans of Buds TIDE Lge. Pkg. 32c	Mild Toilet Soap IVORY 3 Personal Size Bars 20c	Pure Vanilla Extract MCCORMICK'S 2-Oz. Bot. 39c	Safe Soap Flakes LUX Lge. Pkg. 32c
Fine Shortening SPRY 3-Lb. Can \$1.07	For Family Wash SURF Lge. Pkg. 32c	The Soap of Beautiful Women CAMAY Bath Size Bar 14c	Extra-Duty Soap Powder DUZ Lge. Pkg. 32c