

# Church Notices



**FIRST PRESBYTERIAN CHURCH**  
F. D. Patrick, Pastor

Friday 7:00 - Sunday School Christmas exercises  
Saturday 7:30 - Live Christmas Scene on Church lawn  
Sunday 9:45 - Sunday School - Harry Page, Supt.  
11:00 - Morning Worship  
11:00 - Sermon subject  
5:00 - Pageant "Behold the Child"  
6:30 - Presbyterian Youth Fellowship  
7:00 - Live Christmas Scene  
Monday 3:30 - Cub Scouts  
7:00 - Live Christmas Scene  
7:30 - Boy Scouts  
Wednesday 6:30 - Girl Scouts  
7:30 - Adult Choir Practice  
Thursday 8:30 - Brownie Scouts

**THE FIRST BAPTIST CHURCH**  
T. L. Cashwell, Jr., Minister

SUNDAY 9:45 a. m. Sunday School  
11:00 a. m. Morning Worship  
5:00 p. m. Vesper Service  
6:15 p. m. Baptist Training Union  
Wednesday 7:30 p. m. Prayer Meeting

**MISSIONARY METHODIST**  
Second Street, Cora Mill Services  
Rev. H. Spurgeon Scruggs, Pastor  
Kings Mountain, N. C.

Sunday 9:45 a. m. Sunday School  
11:00 a. m. Morning Worship Service  
6:15 p. m. W. Y. P. S.  
7:15 p. m. Evangelistic Service  
Monday 7:15 p. m. Boy Scouts, Troop 3  
Wednesday 4:40 p. m. Girl Scouts  
7:15 p. m. Prayer Meeting

**FIRST WESLEYAN METHODIST**  
J. W. Phillips, Pastor

Sunday 9:45 a. m. Sunday School  
11:00 a. m. Morning Worship Service  
6:15 p. m. W. Y. P. S.  
7:15 p. m. Evangelistic Service  
Monday 7:15 p. m. Boy Scouts, Troop 3  
Wednesday 4:40 p. m. Girl Scouts  
7:15 p. m. Prayer Meeting

**CHURCH OF GOD**  
Corner of Parker and Gaston  
Rev. Glenn C. Eason, Pastor  
Sunday School 10 a. m.  
Night Service 7:15 p. m.  
Saturday night 7:30 p. m.

**PERLETS CHAPEL**  
Rev. E. L. Fortis, Pastor

Sunday 7:00 p. m. Evening Service.

**CORINTH PRIMITIVE CHURCH**  
Elder E. H. Simpson, Pastor  
W. Gold St. near Bridges Airport  
Preaching Services:  
First Sunday 2 p. m.  
Third Sunday 11 a. m.

**BETHLEHEM BAPTIST**  
T. W. Fogleman, Pastor

Morning Service 11:00 a. m.  
Sunday School each Sunday at 10 a. m.  
Wills Harmon, Supt.

**OAK GROVE BAPTIST**  
Rev. C. C. Crowe, Pastor

Sundays:  
9:45 a. m. Sunday School  
11 a. m. Morning service (first and third Sundays)  
6:30 p. m. B.T.U.  
7:30 p. m. Evening service (second and fourth Sundays)

**SECOND BAPTIST**  
B. F. Austin, Pastor

Sunday 9:45 Sunday School  
11:00 a. m. Morning Worship  
5:45 p. m. Training Union  
7:00 p. m. Evening Worship  
Wednesday 7:00 p. m. Prayer Meeting

**MOUNTAIN VIEW BAPTIST**  
Rev. Floyd Hollar, Pastor  
Crowders Mountain Community

Sunday 10:00 Sunday School  
11:00 Morning Service  
7:30 Evening Service

**FIRST CHURCH OF THE NAZARENS**  
Rev. C. E. McKinzie, Pastor

Sunday School 9:45 a. m.  
Wesley Moss, Supt.  
Morning Worship: 11:00 a. m.  
Junior Society at 6:15 p. m.  
Mrs. Lander Short, Director  
Young People's Society at 6:15 p. m.  
Gordon Whitesides, President  
Evangelistic Services at 7:00 p. m.  
Midweek Prayer Meeting at 7:00 p. m. Wednesday

**BOYCE MEMORIAL A. B. P. CHURCH**  
William L. Fressly, Minister  
Church School 10 a. m.  
Lewis Hovis, Supt.  
Morning Service 11 a. m.  
The text for the morning hour is "And the Word was Made Flesh" John 1:14 The minister will preach the morning service from the Gospel of St. John from Christmas until Easter. Read the Gospel with us. Vesper Service 5 p. m.  
Come and Worship with us.

**Burlington Mission**  
Sunday 9:45 Sunday School  
11:00 Morning Worship  
Thursday and Saturday 7:00 p. m. Prayer Meeting.  
Welcome To Everyone.

**SECOND WESLEYAN METHODIST**  
Vancey H. Carter, Minister  
Sunday School 9:45  
Morning Worship 11:00  
W. Y. P. S. 6:30  
Y. M. W. B. 6:30  
Evangelistic service 7:30  
Prayer meeting Wednesday evening 7:30

**TEMPLE BAPTIST**  
W. F. Monroe, Pastor  
Corner of Cass and Fulton  
Sunday School 9:45 a. m.  
Sam Phillips, Supt.  
Worship Service 11:00 a. m.  
B. T. U. 6:00 p. m.  
Billard Fulmer, Director  
Evening Worship 7:00 p. m.  
Midweek Prayer Service Wed. 6:45 p. m.  
Visitors always welcome.

**MACEDONIA BAPTIST**  
Rev. Robert L. Hardin, Pastor

Sunday 9:45 Sunday School  
11:00 Morning Worship  
6:00 p. m. B. T. U.  
7:00 p. m. Preaching service.  
Wednesday 7:00 Midweek prayer service.

**PARK GRACE CHURCH OF THE NAZARENS**  
Rev. Ray Childers, Pastor

Sunday School 10:00  
Supt., Raymond Gregory.  
Morning Worship 11:00 a. m.  
Young People's service 6:30.  
German Hour, president.  
Evangelistic service 7:30.  
Midweek prayer service Wednesday evening at 7:00.  
Radio program: "Showers of Blessings", each Sunday morning at 9 a. m. over WNCN, Gastonia.

**GRACE METHODIST**  
B. W. Lettler, Sr., Pastor

Sunday School 9:45 a. m.  
Morning Worship 11:00 a. m.  
Youth Fellowship 6:00 p. m.  
Evangelistic Service 7:00 p. m.  
Wednesday Evening Prayer Service 7:00.  
Thursday Evening Choir Practice 7:00.  
Friday Evening Cottage Prayer Service 7:00.  
You are invited and we will be delighted.

**ALLEN MEMORIAL BAPTIST**  
W. L. McSwain, Pastor

Sunday School every Sunday morning at 10:00. B. F. Childers, Supt.  
Worship Services each second and fourth Sunday morning at 11:00 and on each first and third Sunday evening at 7:30.  
Sunday School every Sunday morning at 9:45. Dale Vollbracht, Supt.  
Training Union every Sunday evening at 6:30. Miss Joyce Hoyle, General Director.  
Church Family Night on the Wednesday evening after each first Sunday at 7:00.  
Prayer Meeting on each Wednesday evening at 7:00 except on Family Nights.  
The Church in the Spirit of Christ will try to make you feel welcome.

**DAVID BAPTIST**  
W. L. McSwain, Pastor

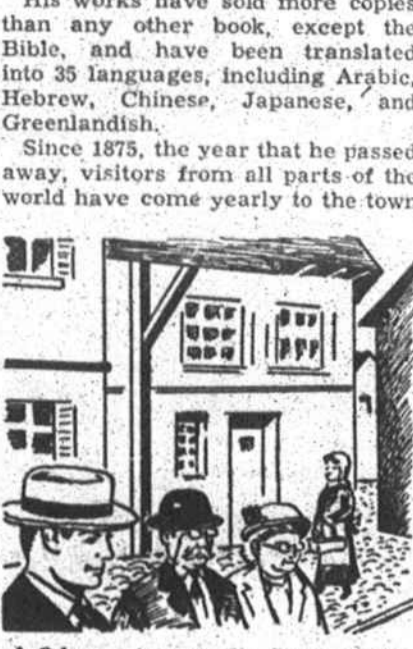
Worship services every first and third Sunday morning at 11:00 and every second and fourth Sunday evening at 7:30.  
Sunday School every Sunday morning at 9:45. Dale Vollbracht, Supt.  
Training Union every Sunday evening at 6:30. Miss Joyce Hoyle, General Director.  
Church Family Night on the Wednesday evening after each first Sunday at 7:00.  
Prayer Meeting on each Wednesday evening at 7:00 except on Family Nights.  
The Church in the Spirit of Christ will try to make you feel welcome.

**Denmark Pays Homage To Hans Anderson - Santa's Best Helper**

LAST YEAR a festival in Denmark paid tribute to one of the greatest helpers Santa Claus ever had. He was Hans Christian Anderson, fairy tale writer, and composer of many Christmas stories.

His works have sold more copies than any other book, except the Bible, and have been translated into 35 languages, including Arabic, Hebrew, Chinese, Japanese, and Greenlandish.

Since 1875, the year that he passed away, visitors from all parts of the world have come yearly to the town



of Odense to see the home of the writer of such tales as "The Little Match Girl," and "The Ugly Duckling."

Anderson's fairy tales, released just before Christmas each year, brought him money, fame and the attention of princes, as well as the adoration of children.

Once he received a United States dollar bill, enclosed in a letter written by a young American girl. It read: "Papa says that the dollar is my own, that he does not suppose you are in particular need of money, but I owe you this and a great deal more, he thinks it proper that I should send it to you."

**Mrs. Littlejohn's Mother Succumbs**

Funeral services for Mrs. Elizabeth Stroupe Coon, of Bessemer City, 75, mother of Mrs. James E. Littlejohn, were held Sunday afternoon at 3 p. m. at the J. M. Odell Memorial Methodist church.

Services were conducted by her pastor, the Rev. A. L. Phibbs, assisted by Rev. T. L. Cashwell, Jr., Rev. Fred Forrester, D. Hoke Coon, a grandson. Burial was in Concord cemetery.

Mrs. Coon died Saturday at

noon after an extended illness. Surviving in addition to Mrs. Littlejohn are the following children: Mrs. G. E. Smith, of China Grove, F. L. Coon, of Kannapolis, Robert L. Coon, Thomas A. Coon, D. Hoke Coon, all of Bessemer City; four sisters, Mrs. Georgie Kincaid, of Bessemer City, Mrs. J. R. Beam of Gastonia, Mrs. George Falls of Cher-

**Local Women Hurt In Wreck**

Miss Winifred Fulton and Mrs. Myrtle, Mrs. Hoke Huss of Cherryville; 16 grandchildren, and three great-grandchildren.

Ruth Wilson were seriously injured Wednesday morning, December 12, in an automobile collision on the Wilkinson boulevard.

State highway patrolmen said Miss Fulton's car struck the rear of a truck that stopped on the highway east of Cramerton crossroads. Miss Fulton's car was completely demolished.

Both women were admitted to Gaston Memorial hospital. Miss Fulton was treated for facial cuts, four fractured ribs and other cuts. Mrs. Wilson suffered a light concussion of the brain and other minor injuries.

The Coastal Plain region of North Carolina occupies 44 percent of the land area of the State.

**Smart Santas are giving Whitman's CHOCOLATES**

The World Famous SAMPLER  
1 lb. \$2.00 2 lbs. \$4.00  
Other Whitman's Assortments Ideal For Gifts

**GRIFFIN DRUG COMPANY**  
Phone 8  
Gifts For Everyone

**Dixie-Home's Better Buys - Say Merry Christmas!**

Will Be Closed Tues. Dec. 25th and Wed. Dec. 26th for Christmas Holidays

U. S. Grade A Dressed & Drawn Toms—18 to 25 Lb.

**TURKEYS . Lb. 59c**

U. S. Grade A TOMS U. S. Grade A HENS

12 to 14 Lb. **61c** 10 to 14 Lb. **69c**

Cut For You, Dressed **FRYERS . . . . . lb. 53c**

Cloverleaf or Puritan (Whole or Half, 10-14 Lb.) **Smoked Hams . Lb. 55c**

4 To 6 Lb. Smoked **Picnics . . . Lb. 41c**

10 To 14 Lb. Whole or Half **Pork Hams . Lb. 51c**

Dressed & Drawn Fat **Hens . . . . . Lb. 49c**

Dressed & Drawn Long Island **Ducklings . . Lb. 61c**

Oscar Mayer Canned—7 1/2 Lb. Whole **Cooked Hams lb. 79c**

**Dixie Home Super-Markets**

TRUE SOUTHERN HOSPITALITY IS OUR RULE FOR COURTESY

# America's Most Talked About Television!



**CBS-COLUMBIA "CUSTOM-TUNED" RECEIVERS**

ADVANCED DESIGN CIRCUITS BY CBS-COLUMBIA ENGINEERS

YOU'VE READ ABOUT IT! YOU'VE HEARD ABOUT IT! NOW YOU CAN OWN IT!

Yes, you can own a CBS-Columbia receiver that is "Custom-tuned" to your own neighborhood! That means exactly tuned to the demanding reception conditions of your community.

This exclusive CBS-Columbia feature assures the sharpest, clearest pictures possible no matter where you live. Advance design circuits make "custom-tuning" possible. Enjoy superior television performance with CBS-Columbia.

*Costs no more than ordinary television*

**Model 17 M 1**  
17" Beautifully styled ebony black metal table model with gold mask and knobs. 17" black rectangular tube with glassless filterglass screen. \$219.95

**MODEL 17 C 7**  
17" A great value—a low priced 17" console. Beautiful mahogany finish. Filter glass screen sharpens the image and eliminates glare. Built in ultra Dynamic Antenna. \$209.95

LIMITED QUANTITY ONLY! WE PREDICT AN EARLY SELLOUT! HURRY!

Liberal Allowance for Your Ordinary Television Set  
Free Home Demonstration! 78 Weeks to Pay!

**Gault's Appliances**  
415 North Piedmont Phone 225

**Dixie Home Super-Markets**

**CRANBERRY SAUCE**  
Ocean Spray No. 300 Cans **33c**

**Bake A Fruit Cake!**

Tasty Variety **Fruit Mix 8-Oz. 29c**  
Glace Red (Green 4 oz. 22c) Pkg.  
**Cherries 4-Oz. 22c** Pkg.  
Spicy, Tangy **Citron.. 8-Oz. 22c** Pkg.  
Orange or **Lemon PEEL 4-Oz. 13c** Pkg.

**Holiday Values!**

Playmates Mixed Sweet **Pickles .. 28-Oz. 37c**  
Libby's Placed Stuffed Jar  
**Olives .. 3-Oz. 32c** Bot.  
Red Marachino **Cherries . 8-Oz. 28c** Bot.  
Confectioners 4X **Sugar... Lb. 12c** Pkg.

Dessert or Salad Favorite! Dixie-Home Yellow Cling **Peaches No. 2 29c**  
Can

JUICY FLORIDA **ORANGES**  
8 Lt. **37c** 20 Lt. **93c**  
Mesh Bag

Keep The Nut Bowl Well Filled With These Extra Large **Stuart Pecans.. Lb. 45c**

Extra Fancy Washington Delicious **Apples . . . 3 Lbs. 45c**  
Crisp Golden Heart **Lettuce . . . Lgo. 27c** Head  
**Celery 2 Lgo. 29c** Stalks  
Red Ripe Fresh Cape Cod **Chestnuts . . . Lb. 17c**  
**Cranberries . . Lb. 25c**  
Fancy Eastern Stayman **Walnuts . . . Lb. 45c**  
**Apples . . . 3 Lbs. 35c**  
Fresh Jumbo Size Honduras  
**Cocoanuts . . . Each 19c**

Sweet Juicy Zipper Skin **Tangerines.. 3 Lbs. 25c**

**Headquarters for HOLIDAY TREATS!**

Brock's Novelty **Candy Mix Lb. 29c** Bag  
Meador's Santa Claus **Sticks.. Pkg. 10c**  
Kris Kringle's Candy **Canes . . . Pkg. 29c**  
Brock's Dark or Milk Chocolate **Cherries . Lb. 49c** Box  
Meador's Pure Sugar Stick **Candy.. 2-Lb. 49c** Box

Brock's Delicious Chocolate **Drops... Lb. 29c** Box  
Brock's Double Dip Chocolate **Peanuts.. 8-Oz. 29c** Bag  
Brach's Assorted **Toffies.. 10j-Oz. 29c** Bag  
Dromedary Pitted **Dates .. 7j-Oz. 25c** Pkg.  
Callmyrna **Figs.... 6-Oz. 16c** Pkg.

**Headquarters for HOLIDAY TREATS!**

Brock's Novelty **Candy Mix Lb. 29c** Bag  
Meador's Santa Claus **Sticks.. Pkg. 10c**  
Kris Kringle's Candy **Canes . . . Pkg. 29c**  
Brock's Dark or Milk Chocolate **Cherries . Lb. 49c** Box  
Meador's Pure Sugar Stick **Candy.. 2-Lb. 49c** Box

Brock's Delicious Chocolate **Drops... Lb. 29c** Box  
Brock's Double Dip Chocolate **Peanuts.. 8-Oz. 29c** Bag  
Brach's Assorted **Toffies.. 10j-Oz. 29c** Bag  
Dromedary Pitted **Dates .. 7j-Oz. 25c** Pkg.  
Callmyrna **Figs.... 6-Oz. 16c** Pkg.